

More Combinations Offered This Year in Shoes for Teen-Agers

You have to be fast on your feet to keep up with America's fast growing teen population. But that's just what American shoe designers have done this year - they've come up with more styles, more color combinations and more leather finishes than ever before been available to teen girls. This season teens have their

choice of the high and the low in footwear fashions - from knee-high boots to low-cut skimmer flats. Whether it's for a date or casual costume, for school or town wear, teens will find fresh ideas in little heels, new versions of the classic moccasin or the pump with the opened-up look.

The classic moc, with refined or heavy stitching, takes on a new gleam in a brass-colored waxy leather. Set on a substantial, but supple, leather sole, the leather moccasin looks as trim as it feels.

Newly Saddle
The oxford with its patches, swatches and multi-colored inserts bears little resemblance to the saddle oxford - but it's really the new, dressed-up version of this traditional shoe.

Brushed leathers, often in combination with colorful smooth or waxy leathers, are popular in the oxfords. Many close on the side or, in slip-on versions, feature asymmetric sides.

As the boot shoe - the teen's own fashion discovery - grows ever more popular, there are more and more styles available. One of the most charming variations this year is the "almost boot" which features either high fronts, high backs, or one side higher than the other - but is never higher all around.

Boots in brushed, cowhide and glove leather frequently rise to mid-calf. Some high boots are worn straight to the knee, others are folded down in "fireman's" fashion.

For cold weather, the popular high boot is lined either in smooth leather or in natural wool shearing. Either way the leather lining keeps out wind, water and weather - without trapping normal foot moisture.

In toes, the story is more rounded and tapered silhouettes with squared-off versions - in flats and boots - coming up strong. Pointed toes seem less popular, except in heel shoes.

Some soft leather flats feature side zippers - borrowed from the boys - boots often have concealed gores, while occasional strap-and-buckle closures are seen on all styles.

Feminine footwear fashions focus on leather this fall, as luxurious new textures enhance deep autumn colors and trim shoe shapes. Women's leather shoes remain slim in

silhouette, though somewhat softened at the front end, and lighter in appearance and weight.

The most popular dress styles this fall - boots, pumps and strap shoes - depend on the exquisite finishes of smooth, suede, patent and reptile leather for fashion emphasis.

In tailored shoes, soft suede and finely grained leather step out strongly. Reptile and patent leather are used in combination and as trim on tailored pumps and walking shoes.

For flats and casual shoes, brushed leather, waxy leather, and large grains are style leaders.

Boots Are Big

Leather boots, which for several years have been growing in popularity, are easily this season's most interesting fashion news. They run the gamut from high fashion boots - in sleeky smooth, soft suede, gleaming patent and handsome reptile leathers - to casual country boots. Set on slim leather soles for town

wear and medium leather soles for the suburbs, the boot pleases the eye even as it

Colorful Styles Seen in Fall Hats

Color is the biggest news in men's hats for fall. The hue will be lighter.

Medium grays, blue-grays, willow, neutral brown and Khaki promise to steal the spotlight.

"Natural shoulder" is the style key - this means hats that are savvy, smart, but safe. Novelty shapes will be more for casual wear.

Into the sporty picture comes leather, especially suede, shaping up the new hats. But for the dressy hours, felt remains the leader.

Most important in the "headline" story is the fact that hats are being worn by more and more men - hats are no longer exclusively for the mature man.

cradles and protects the foot. The boot is available this year in every price range - with the widest assortment of styles and leather colors in the middle range - and in every height. Ankle-skimming boot-shoes, mid-calf and knee-high boots stand on a variety of thin, shaped heels from mid-to very tall heights.

In casual suburban boots, heels tend to be low and stacked. Lower boots are lined in light, smooth leathers while the higher-reaching boots are divided between smooth leather linings and wool shearing linings that offer warmth without weight.

On the other end of the scale, fashion news will be made by a shallower, "less shoe" look in pumps and strap shoes. This lighter look will be introduced first in daytime and evening footwear.

Tailored pumps will sport narrow throats - with either square or crescent toes. The three basic toes - tapered, crescent and square - will be found on daytime shoes, usu-

ally with matching throat lines.

Open For Fall
The "open" or lighter look, which had good success in spring shoes, is continuing on

Adult Furniture Now for Children

Adult furniture for children is a new idea, and a reality, this season.

No longer must young girls and boys live with "kiddie" furniture. Man-size pieces for boys, and mom-size furniture for girls are available at prices that parents want to pay to outfit the youngsters' rooms.

Maple is the favorite for the young man, styled in the colonial manner.

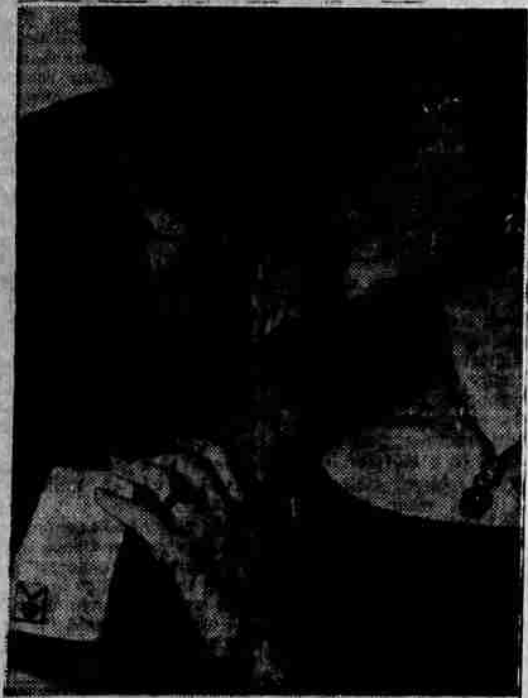
For girls, antique white and gold provincial pieces suit her feminine tastes. Canopy beds have long been popular with girls of all ages, and these are available, too.

Pieces come with stain-proof tops, of course!

into the fall. The "open" appearance will be provided by low vamp straps, D'Orsay cut and side scalloped pumps and an occasional closed toe sling-back. For reasons of comfort and appearance, open-toed shoes are in eclipse.

When shopping for new fall shoes, be sure to check the shoe labeling. The Federal Trade Commission has recently issued "shoe guides" stating that major shoe parts - such as upper, sole, lining and insole - made to imitate leather must be labeled as to content. Check the inside of the shoe to insure you're getting your money's worth.

In color, brown will be an all-purpose range - from gray-brown neutrals in smooth and grained leathers, through mid-brown in smooth, brushed and grained leathers, to rich natural tans in all finishes. Smooth leather in spice tones will be used alone or in combination with the other three finishes. Cranberry red, blue and gold will be other strong leather colors this autumn.



MADE FOR EACH OTHER—His 'n Hers, matching jewelry, set with synthetic jewels that have the look of Mother Nature's finest gems. Made, not mined, by man, these sapphire-look stones fall into the better costume jewelry price category. The jewelry shown here is set in white gold. Linde Star Jewelry.

Tweed Fragrance Inspired in 1934 Returns in 1963

Tweed fabric came for a walk in the woods in the 1930's and has stayed for dinner in the 60's.

Following suit, Tweed fragrance, inspired in 1934, today creates the fashionable mist of outdoor elegance from ski lodge to dinner dance. Its many fragrance forms - icicle to perfume - make it the perfect companion for the new grand entrances of tweed textures.

During this fall season when line is uncluttered, texture takes on a new importance and gives a dimensional look to everything from ski-pants to sweaters. The richness of tweed colors and textures has led designers to tweed mantles and ponchos that stand out all the more because they are the topmost layer over single colors.

As important as the ever-presence of tweed on the culture scene, is the lively trend toward individuality in fashions for indoors and outdoors. It's a trend toward simplicity and pared down elegance and toward the heightening of the four fashion senses: sight and sound (you look wonderful!), touchable textures, and the unstudied scent of outdoor freshness.

The crisp, woody notes of classic Tweed capture this natural effervescence to make a scene sealer in the air. For fall Lenthic suggests making the scene with Tweed from dawn till dark, varying not the fragrance but the fragrance form.

Cologne mists belong in the morning air, bubbling bath oil in the bath, hand and body lotions on the dressing table, an icicle in the sports bag, a purse mist in the evening bag, and perfume to support the very air of Tweed, from noon on.

Prediction: if you fall in love with fall - blame it on tweed and Tweed.

'Wiggin Parts' Newest in Wigs

"Think wig" is the fall call in fashion and many a woman remains confused. Shall it be a wig or wiglet? But now you can have a wig-in-parts and while you're buying the parts you wear them in wiglets.

The "Wiggin Parts" is a development of Richard Hartwich, Inc., of New York, maker of the award winning Perma-Coif High Fashion Wigs and available through beauty salons locally.

"Wiglets have a definite role in the fashion picture," Hartwich explains, "yet on many occasions a woman will prefer to wear a wig. Now she can have both - on a budget."

The Hartwich "Wiggin Parts" is composed of three wiglets - front, top and back. Worn together in their proper places, they form a complete high fashion wig. Worn individually or in combination at their ordained places on the head - or at any portion of the hairdo for that matter - they form numberless hairstyling possibilities.

The "Wiggin Parts" should be ordered through the beauty salon to match the wearer's hair color, and by section.

WOOLWORTH'S SIDEWALK DAYS

FRIDAY AND SATURDAY ONLY!



LADIES' SHAGGY PLUSH SCUFFS \$1.00 Pair

With Wedge Heel White, Turquoise, Coral and Black

READY TO EMBROIDER SEAMLESS PILLOW TUBING



SAVE 49c 100 pr.

Six delightful patterns are clearly printed and ready for your needle. 42-32" standard size in snowy white cotton comes with a hem stitched edge so that you can crochet a border.



AQUA NET HAIR SPRAY 88c plus tax

Keeps curls tidy, fluffy and soft. Protects your coiffure from rainy day drop, from over-busy breezes. Controls "too curly" hair as well. Non-sticky, non-flaking.

LADIES FLORAL PLASTIC HALF APRONS



Ruffle Around Pocket Pink, Blue, Pearl and Yellow 25c Ea.

8-INCH GERMAN CHOCOLATE CAKE



Baked Fresh in Our Kitchen 87c

YOUR MONEY'S WORTH MORE AT WOOLWORTH'S

Corner 6th and Central

Open Friday 'Til 9 P.M.

WESTERN STYLE SIDEWALK SALE

FRIDAY AND SATURDAY AUGUST 23rd AND 24th

WESTERN THRIFT STYLE THAT IS.

GOOD ALL WEEK SPECIALS

WHILE PRESENT STOCKS LAST

- SIL-MIN-OL INTERNAL LUBRICANT**
An emulsion of heavy USP mineral oil-Agar-Psyllium.
REGULARLY 98c PINT
HALF PRICE SPECIAL **49c**
- RONSON LIGHTERS**
FOR THOSE WHO PREFER THE FLUID TYPE
MANY MODELS PRICED \$5.50 UP **1/3 OFF**
- MASSENGILL DEPHOS.**
DICALCIUM PHOSPHATE 15 1/2 GR.
666 UNITS VITAMIN D-2
REGULAR 98c
BOTTLE OF 100 **79c**
- BENTLEY BUTANE LIGHTER BY SCHICK**
WERE MARKED \$8.95
\$3.99 \$9.95 and \$10.95-TAKE 'EM
- BEXELETES MULTIVITAMINS**
High Potency for Adults and for Children
\$3.95 BOTTLE OF 120 TABLETS **\$1.88**
\$8.35 BOTTLE OF 300 TABLETS **\$3.98**
BUILD THEM UP FOR SCHOOL **NOW AND SAVE**
- GARDEN HOSE**
SMOOTH "GREEN GRASS" OR RIBBED "LAWN FLO"
1/2 IN. I.D. x 50 FT.
\$2.49 VALUE CHOICE **\$1.98**
- SCHOOL LUNCH KITS**
Flat Plastic or Metal Dome Type
ICY HOT BY THERMOS WITH 10 OZ. BOTTLE **\$1.98**
A \$2.75 VALUE FOR JUST

SOOPER DOOPER SIDEWALK SPECIALS

PRICES GOOD FRIDAY & SATURDAY

- THONGS! ZORIES!**
FIRST QUALITY ONLY
WERE MUCH HIGHER TAKE THEM AWAY FOR **25c**
- SUNBEAM ELECTRIC RAZOR**
GOLDEN GLIDE MODEL
ONCE UPON A TIME \$29.50
SIDEWALK SPECIAL **\$7.77**
- BARBECUE SMOKER-BRAZIER**
ELECTRIC ROTISSERIE
ALL-IN-ONE!
\$15.88 FLOOR MODEL NOW SAVE 3 BUCKS **\$12.88**
- ALUMINUM PITCHERS**
With Ice Trap Spout
FINEST QUALITY
WERE \$2.29-S.S.S. **\$1.49**
- BEACH PILLOWS**
TERRY COVERED-FOAM FILLED
WERE \$1.49 AND \$1.98
BUY THEM NOW **25c..**
- TABLE MODEL**
WITH-OUT ROTISSERIE
WERE PRICED AT \$9.88
ONLY A FEW LEFT **\$7.88**
- Heavy Mineral Oil**
McKESSON'S SPECIAL LUBRICANT
\$1.18 VALUE TWIN-PAK
2 FULL PINTS FOR JUST **50c**
- CIGARETTE OR CIGAR HOLDERS**
TEN CENTERS BUY A BUNCH **5c** Each
- LADIES' LONG JEWELLED HOLDERS**
REGULARLY 85c
TAKE THEM AWAY **49c**
- FAMOUS ALLADIN VACUUM BOTTLES**
\$2.19 STANDARD NECK PINT - PLASTIC CASE **\$1.39**
\$2.39 STANDARD PINT ALUMINUM CASE **\$1.49**
\$2.19 WIDE MOUTH 10 OZ. PLASTIC CASE **\$1.39**
\$2.69 WIDE MOUTH PINT - PLASTIC CASE **\$1.69**
- HEAVY CANVAS FURLOUGH BAGS**
Flat Folding Type
3 Sizes From Which To Choose
Regular \$1.19, \$1.39 and \$1.69
NOW 79c, 89c and 98c
- AUTO FLOOR MATS**
FITS MOST AUTOMOBILES
\$3.95 COMPARABLE VALUE
SAVE AT OUR LOW PRICE **\$1.98**
- SPIRAL NOTE BOOKS**
REGULAR 25c SIZE
TRIED TO GET 19c
NO SOAP - OUT FOR **10c**
- THOR SPRINKLER GIANT OSCILATING**
PRICE TAG ONCE WAS \$12.95
OUR PRICE WAS \$6.88
BUY NOW FOR JUST **\$5.99**
- SHOE SHINE VALET**
THEY WERE \$1.65
BACK TO SCHOOL SPECIAL **83c**

WESTERN THRIFT

PRESCRIPTION SPECIALISTS MEDFORD'S ORIGINAL DISCOUNT STORE N. CENTRAL BLDG. 773-3371

* PARK & SHOP • SILVER DOLLAR STAMPS • ADD FED. TAX WHERE NEEDED *