

### Water Department Manager Pleased With New Main

Medford Water Department Manager Robert Lee has stated he is "very pleased" with the results obtained from the new 24-inch south feeder main, which was placed in service Aug. 1.

Since its installation, the system has been thoroughly checked at various locations and under varying conditions.

"The most dramatic benefit has been noted in the southwestern part of Medford," Lee said, "where pressure drops used to be excessive during periods of heavy use."

As an example, Lee cited a key recording station on Stewart ave., where pressure drops as great as 40 pounds were noted before the new main went into service. Lee said the drops now will not exceed 20 pounds.

**System Interconnected**  
Lee pointed out that actually, since the entire distribution system in Medford is interconnected, the new main effects the pressure and flow available to the entire city.

"Minimum pressures at the city hall have been increased about five pounds," the water department manager noted, "and the fire flow available to the whole distribution system has been materially increased."

A further benefit has been derived, Lee said, in that the new main provides another major link from the east side reservoirs to the western side of the system should a loss of one of the other feeder mains occur, such as happened during the Dec. 2, 1962, flood on Bear creek.

**Major Improvement**  
The south feeder main, which was constructed under a \$243,912.46 contract with Snelson Plumbing and Heating company of Sedro-Woolley, Wash., is part of a major improvement program to the city's entire distribution system.

As part of the program, a 10-million gallon reservoir is planned for construction in the vicinity of South Stage rd. and Dark Hollow rd. Work on the reservoir is scheduled to begin in 1965, Lee said.

Because of the irregular shape of the city's boundaries, a considerable portion of the new main was constructed outside of the present city limits.

Lee said he has received inquiries from a number of people who contemplate construction of residences in the vicinity of the new main and who would hope to get service from it.

"The water department wishes to make it clear," Lee said, "that service from the new main, either to new residences or to existing residences, is not available outside the city limits of Medford."

### 2,994 Cases Are Checked by Police

Medford police investigated 2,994 cases during July, clearing 2,855 for 96.4 per cent, according to the monthly report from the department.

This is an increase over July, 1962, when the department investigated 2,717 cases of which 97.3 per cent were cleared.

Of the cases checked by city police, 149 were major offenses. They included 27 burglaries, 26 cases of larceny involving amounts over \$50, 89 cases of larceny under \$50 and seven cases of auto theft.

Of the other miscellaneous offenses investigated, 50 concerned drunkenness, 39 embezzlement and fraud and 13 disorderly conduct. Cases involving motor vehicles included three for driving while under the influence of intoxicating liquor, 300 traffic violations, and 3,605 parking violations.

### Two Persons Appear In District Court

Shirley Rae Russell, 19, Dunsmuir, Calif., appeared in Jackson county district court Thursday and her case was continued to Monday, Aug. 19, to allow her to obtain counsel.

She is charged with uttering and publishing a false check.

Marlton Lee Loftin, 31, transient, pleaded guilty to charges of entering a motor vehicle, and also appeared to answer charges of assault and battery. His case was continued to Monday on both counts.

Loftin is charged with climbing into a Medford police car and "manipulating the controls."

# PENNEY'S

ALWAYS FIRST QUALITY  
DOWNTOWN MEDFORD

TOMORROW  
9:30 A.M. Till 9 P.M.!



# bargain days



Boys' Warm Up to the Ski Look!

**NYLON Special!**

Jr. Boys Sizes 4 to 8

**6<sup>88</sup>**

Big Boys

Sizes 10 to 18

**8<sup>88</sup>**

- Rollaway Hood!
- Zipper Pockets
- 100% Nylon - Nylon Taffeta Quilted to Dupont Fiberfill Dacron

So light, so warm! Quilted nylon parkas with hideaway hoods and zip-up pockets. Heavy-duty fronts for even greater wear. Hip length with regular zipper closure. Machine washable in lukewarm water - 3 popular colors, black, royal blue and dark green - Compare this outstanding value!

Boy's Wear ... Penney's street floor



Prep Boys' 100% Acrilan  
**KNIT SPORT SHIRTS**

Sizes 10 to 20  
Penney Price!

**2<sup>98</sup>**

Imagine getting luxury Acrilan acrylic at so low a price! Yes, Acrilan, famous for shape-retention, shrink resistance, long wear! Smart new prep fashions that will take him smartly through the Fall!

Penney's street floor



Boys Bulky Orlon  
**ZIPPER SWEATERS**

Sizes 6 to 20  
Penney Price!

**6<sup>95</sup>**

Cadet styled sweater leads an easy life for active boys. Toss it in the washer, dryer and it's ready to wear. Orlon Sayelle acrylic says so... smartly in colorful ways that give lots of warmth without weight.

Penney's street floor



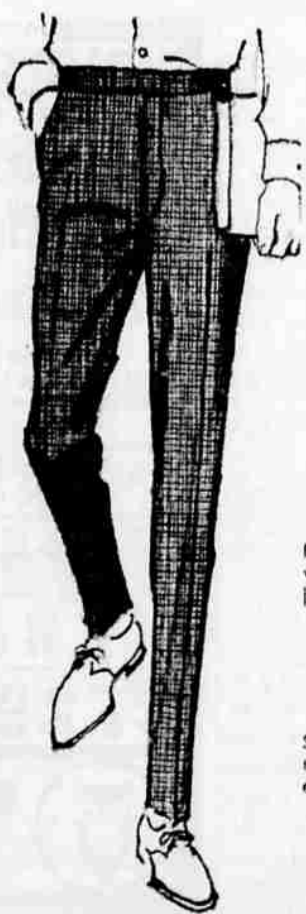
Button-Down Collar  
**FALL PRINT SHIRTS**

Sizes 6 to 18  
Penney Price!

**1<sup>59</sup>**

Smart university prints that boys really go for... Penney tailored for long-wear, comfort-fit! Short-sleeved regular model. Machine washable. For style! For quality! For selection! and for Low Price, see Penney's new 1963 fall collection of fine back to school shirts of which the above is only one example!

Penney's street floor



smart savings on boys' back-to-school cotton slacks

**2<sup>98</sup>** and **3<sup>98</sup>**  
SIZES 6 TO 8      SIZES 10 TO 18

LEFT: DEEP-TONED PLAID COTTON SATEEN

Deep-toned cotton sateen Continentals breeze along in a wash 'n wear way! Plaid tapered, cuffless style, with adjustable waistband extension. Smart!

RIGHT: FAMOUS FIREBIRD TOUGH COTTON TWILL

Sleek Continentals in a tough cotton twill go for a tapered cuffless style. Sure-fit waistband with adjustable extension. Tan, willow, shale... easy care finish!

LAY AWAY HIS COMPLETE SCHOOL WARDROBE  
Now while stocks are complete...  
Then charge it later!



## EXTRA SAVINGS! GIRL'S COATS!



Warm for all-weather in our

**PILE-IN POPLIN**

Water-repellent cotton poplin shrugs off showers and pops-up a hood from its collar hideaway. Warm on the inside with a surprise lining of tri-colored Acrilan acrylic pile. Roomy, hand-warming pockets. Machine washable. Colors, Beige, Turquoise, and Colorful Prints!

Sizes 7 to 14

Terific Special

**8<sup>99</sup>**

Girl's Wear ... Penney's mezzanine floor



Compare!

OUR ORLON® MATCH-UPS! KNITS FLIP OVER PLEATS

**4<sup>98</sup>**

skirt, cardigan each, 7-16

New color uprising... bold bursts of Laguna blue, Coronado red, Sierra green! Orlon acrylic bulky buttons over Orlon-wool plaid in clustered knife pleats.

Penney's mezzanine floor



WOVEN-BORDER COTTONS—EXPENSIVE-LOOKING—BUT

ONLY **2<sup>98</sup>** and **3<sup>98</sup>**

This is a look of clever crispness that usually commands higher prices! Count on Penney's to put them out at bell-ringing prices! Come find the latest, greatest school colors '63 too! Machine washable, of course!



Look!

COLLARED ORLON® MATCHES UP ON THE A-LINE

**2<sup>98</sup>**

Slip-on

**4<sup>98</sup>**

A-skirt

The A-skirt shapes-out with an opened envelope pleat... shapes-up wonderfully in all-wool flannel. Color-matched Orlon acrylic slip-on with collar. 8-16.

KNIT-PRINT IN ORLON® COLOR-CUES TO WOOL

**4<sup>98</sup>**

Cardigan

**5<sup>95</sup>**

Skirt

Sizes 7-16

Cardigan in all-Orlon acrylic print color-blooms to match wool flannel skirt with stitched-to-the-hip pleats! Laguna blue, Coronado red, Sierra green.

Girls... Penney's mezzanine floor