



Home Furnishing Tips For Brides Are Listed

By MARGERY McELHENY
Chicago—(UPI)—A check of department store wedding specialists indicates an early in-law problem — the bride should expect her choice of home furnishings to clash with those her mother or mother-in-law would choose.

"The majority of young brides prefer tailored, modern designs that have plain, elegant patterns," said Mrs. Elaine Kraiss of Sears Roebuck and company, in speaking of table setting preferences. "But their mothers favor floral patterns and more ornate designs."

One of the most popular styles in china is a plain white dish with a platinum rim, said one expert.

Another consultant said a

Mrs. Dewey Jeffrey Entertains Circle

Gold Hill—Mrs. Dewey V. Jeffrey was hostess for the July session of the Golden Circle Women's group of Gold Hill Christian church at her home on Fifth avenue.

During the meeting members voted to help support Mr. and Mrs. Kenneth Davis, Wycliffe translators and missionaries to New Guinea in October. The couple have two youngsters.

The group is the sponsoring body in the church that sponsored the recent Vacation Bible school for children in the Gold Hill area. It was a combined effort with Assembly of God and Community Methodist churches.

The next meeting of the circle will be held at the home of Mrs. Ed Marsh Wednesday, August 14, at 7:30 p.m.

length. Flowing chiffons, narrow crepes, usual bodices embroidered with jewels. Matching jackets. Lace and ruffles at Dior.

Evening coats: Floor-length mohair coat in bright colors at Ricci, black - and - white checked wool coat at Simonetta-Fabiani. Evening coats of feathers or woven ribbons at Lanvin.

Belts: Leather belts at natural waistline back on some dresses. Also many half-belts in back, some in front. Many beltless dresses.

Novelties: Plaid knickers, greatcoats nearly to the ankles worn over short skirts, vests under suit jackets.

Fabrics and colors: Many white jersey and white crepe cocktail dresses. Dark green big new color. Dark green velvet blouses with black and dark gray suits. Gray flannel sheath dresses and suits.

Tweeds, even in purple, pink and yellow. Soft yellow and orange wool suits. Orange coats. Chalky, pastel tweeds and big checks at Dior.

Evening gowns: Floor-

colors. Hats or kerchief hats to match.

Fur Lined Coats
Fur lined gabardine raincoats popular, such as raccoon at Lanvin and beaver at Dior. Some coats of shiny patent leather trimmed with mink at hem, Guy Laroche. Fuzzy mohair lining for artificial leather raincoat and matching skirt at Zabeleta.

Cocktail dresses: Still short. Draped dresses and tunics, but mainly narrow sheath dresses with high waists, high necks in front, low backs. Back fullness above waist in many dresses for droopy back effect. Shirtdress in lame. Tweeds mixed with lame for evening suits.

Evening gowns: Floor-

MANOR-ISMS

By ETHELYN EVANS

Manor members, as usual, are interested in and ready to help promote and establish our first valley music festival — Peter Britt Music Festival in Jacksonville, August 11-to-24. These twilight (4 p.m.) and starlight (8 p.m.) concerts will complement the Oregon Shakespearean festival in Ashland. Held in the beautiful grove of the Britt Gardens, with historic Jacksonville as a background, this festival should, and I feel sure will, grow and grow into another permanent, enjoyable and valuable cultural asset of the valley and state. This year, of course, is the difficult and costly "first season," but some of the hard work and money spent now will be for permanent use.

The festival is in the capable hands of a most devoted and energetic committee of sincere, civic-minded valley people. We have an interesting photograph — poster in our lobby of Bert Pree, president, E. O. Graham, first vice president, Ben Trowbridge, second vice president, Lewis Tiger, secretary; Virginia Lusk, board member, and William Mansfield, associate attorney. This was taken in the Peter Britt room of the Jacksonville Museum with the old camera and old portrait-photos taken by him in the background. Members of this committee have a well defined, long-term vision of this festival rapidly equaling the Carmel and other well established festivals and, eventually, who knows? it might be another "Tanglewood." Why not?

Our valley is facing the same enormous increase in population faced by all western states. Besides, we are already on the cultural map with our nationally and internationally known Shakespearean festival.

Enthusiastic members of our Manor committee for the Britt festival, Mrs. C. C. Collins, Mrs. C. Reese Braley, O. M. Anderson and yours truly — are working hard to supply information, tickets and arrange for transportation. The Manor administration is interested and willing to schedule a full bus load to the concerts for any who need such service. The general committee has arranged for ample parking for private cars; and they are providing a large number of benches, but it is suggested that we take along rugs, cushions and folding chairs if possible. Mr. and Mrs. Ralph Moore immediately took season tickets, heading the list of Manor members who plan to attend.

The Manor committee, of course, led off by all taking patron tickets. Many of us will attend the twilight, 4 p.m. concert as that will make it possible for us to attend on-

of the Shakespearean plays the same evening. The afternoon concerts will undoubtedly attract visitors who are in the valley for the first plays, and we hope they will go early for the music and have time to tour old Jacksonville and visit the Museum.

This week I took a short but rewarding trip to Westminster Presbyterian church property, set in a beautiful grove of towering oaks at 2000 Oakwood drive. I went to see a simulated stained-glass window by our retired architect, Hiram Salisbury. Like a similar but smaller window he made for our Manor auditorium, this window creates a diffused cathedral atmosphere in the exceptionally well planned parish hall which is being used for all services now, pending the erection of the main church edifice. Another Manor member, Mrs. C. C. Collins, and Mr. Salisbury teamed up on this worthy idea — Mr. Salisbury contributing his creative imagination and technical skill in designing and executing the window. It is in the end of the building opposite the very effective plain, dark cross at back of the platform now being used as the pulpit.

Mr. Salisbury has used the companion cross in the end window as background and has designed an intricate sunburst of jewel toned colors. On plain, firm plastic he has glued his free hand patterns of thin colorful plastic. Even the manner in which he used the unsmoothed glue helps to create the stained-glass appearance and feeling. It is lovely and worth a special trip or, better yet, attending a service to see. Also, this project exemplifies the spirit of the ecumenical movement for united Christian work since Mr. Salisbury is a devoted, life long Episcopalian.

Mr. and Mrs. C. C. Collins, Mrs. C. Reese Braley, O. M. Anderson and yours truly — are working hard to supply information, tickets and arrange for transportation. The Manor administration is interested and willing to schedule a full bus load to the concerts for any who need such service. The general committee has arranged for ample parking for private cars; and they are providing a large number of benches, but it is suggested that we take along rugs, cushions and folding chairs if possible. Mr. and Mrs. Ralph Moore immediately took season tickets, heading the list of Manor members who plan to attend.

The Manor committee, of course, led off by all taking patron tickets. Many of us will attend the twilight, 4 p.m. concert as that will make it possible for us to attend on-

Potluck Dinner Held by Group

Yreka — Approximately 30 members and guests of the Pythian Sisters and Knights of Pythias held a potluck dinner in the patio of the Ernest Johnson home at 610 Lane street, Yreka.

The Hawaiian theme was used in the garden and table decorations. Several wore Hawaiian dresses with flowers in their hair.

Out of town guests of the M. A. Lewis family were Mrs. Margaret Lewis, sister-in-law of Mr. Lewis and Mr. and Mrs. B. L. Hunter, all of Medford. Chester Barnett, who is still a patient at the Siskiyou county hospital following a mill accident a few weeks ago, made his appearance in a wheel chair to attend the dinner.

The next meeting will be August 14 and Mrs. James Robinson is chairman.

Lions Auxiliary To Hold Meeting
Prospect — Prospect Lady Lions auxiliary will hold a board meeting at the Prospect Public park Wednesday, July 31. A potluck dinner will be served starting at 6:30 p.m. It will be a combined meeting and work night for both the Lions and auxiliary. The jam-boree will be in one week.

The 'Narrow, Long Look' Continues At Main Paris Designers Showings

By ALINE MOSBY
United Press International
Paris—(UPI)—The "narrow, long look" still reigns king in Paris, but revolutionists have slipped in with big shoulders, wider sleeves and longer suit jackets during the current fall-winter fashion shows.

Four fashion houses still have not shown their wares to the press and buyers congregated in the crowded salons from all over the world. Chanel, Yves St. Laurent, Givenchy and Balenciaga will exhibit this week and may swap the trend.

But to date most of the designers who more or less dictate what women wear have voted to keep the narrow line in power, although shoulders and sleeves have expanded in a few houses and gone downright military at the house of Christian Dior.

The head of one New York department store summed up the shows: "Fashion is in a static period and has been for several seasons. There isn't much change, possibly because women like the way they look—short skirts and unfitted short jackets are feminine and young.

"But next season they may be ready for more change."

Overall Trends
To date, the 1963-64 fall-winter wardrobe shapes up this way:

Skirts: Even Dior admits nobody wants longer skirts. Jacques Heim was the only main designer to drop the hemline and show a full "new look" plaid skirt. Otherwise, suit skirts are narrow. Softened with front gathers at Cardin, in box pleats at Dior, but still narrow.

Suit jackets ending at hip bottom. Simonetta - Fabiana suits had high curved shoulders. Otherwise, main Paris designers created loose-fitting jackets ending at waist or hipbone. Some buttoned from top to throat. Many lapels. Collars small, medium or stand-up to hide model's face. Jacques Giffe banned collars and lapels. Suit styles range from sculptured at Simonetta-Fabiani to Cardin's loose, casual outfits.

Special suits: Walking suits at Estereel with two-thirds jackets cut like men's shirts and often pullover or buttoning up back. Cardin's walking suits, zipping up back. Nina Ricci's "little boy" suits with jackets cut like a boy's shirt with shirttail hanging out.

Bloused Sleeves
Sleeves: Slightly bloused and caught at the wrists with cuffs on coats and suits. Either three-quarters or wrist length, narrow or widening slightly at forearm. Coat and suit sleeves curved at Simonetta-Fabiani and Philippe Venet. Short puffed sleeves on dresses at Dior.

Necklines in general: Extra high. Huge Turtlenecks on dresses, scarves matching suits muffling necks, giant stand-up or crumb-catcher collars on coats and suits. Dior suit blouses, day and evening

dress end above Adam's apple.

Waistlines: Belts are back at natural waistline, or dresses loose in waist in "sack" style or cut to give extra-high waistline look. Not many low waistlines.

Coats: Wider than last season but still with straight lines. Some narrow coats with natural shoulders. Some with added capelets. Cape-coats with huge batwing sleeves at Cardin.

Furs: Leopard, ocelot and imitations in nearly every collection, made into suits, hats, collars, coats, blouses. White coat with leopard sleeves at Lanvin.

Raincoats: Of artificial "leather" embossed with a pattern in relief in various

colors. Hats or kerchief hats to match.

Fur Lined Coats
Fur lined gabardine raincoats popular, such as raccoon at Lanvin and beaver at Dior. Some coats of shiny patent leather trimmed with mink at hem, Guy Laroche. Fuzzy mohair lining for artificial leather raincoat and matching skirt at Zabeleta.

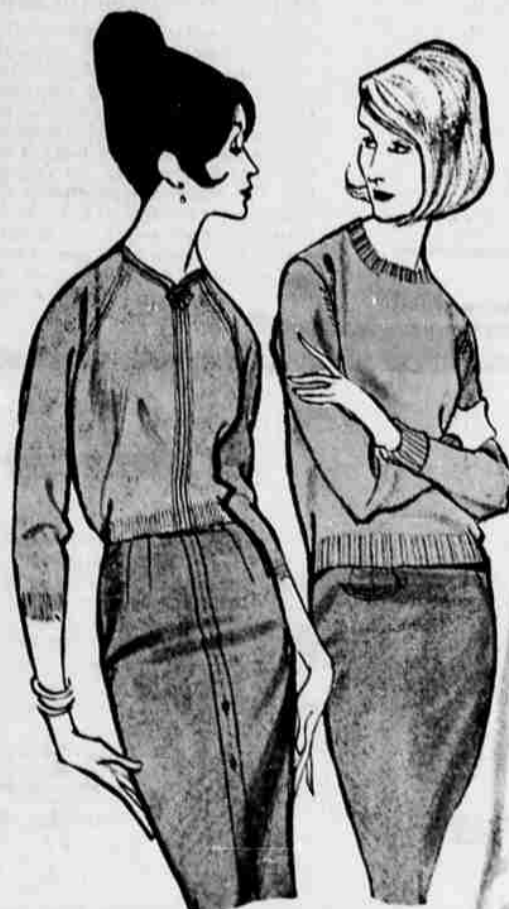
Cocktail dresses: Still short. Draped dresses and tunics, but mainly narrow sheath dresses with high waists, high necks in front, low backs. Back fullness above waist in many dresses for droopy back effect. Shirtdress in lame. Tweeds mixed with lame for evening suits.

Evening gowns: Floor-

colors. Hats or kerchief hats to match.

PENNEY'S

ALWAYS FIRST QUALITY



MORE TIME TO SAVE!
SHOP PENNEY'S
MONDAY and FRIDAYS
'TIL 9 P.M.!



Pre-season special!
sweaters! skirts!
your choice

FUR BLEND AND SHETLAND SWEATERS

Imagine! These luxury sweaters at this astoundingly low price! Who else but Penney's could offer you lambswool-angora-nylon blends and wonderful wool shetlands at such savings! See classic cardigans and slippers with the quality workmanship you look for! All superbly shaped! Stock up now on these great buys! Colors galore! Sizes 34 to 42.

FINE WOOL FLANNEL SKIRTS

Now—when you can save the most! Hurry in to Penney's and find the price you'll rarely see for such quality, once autumn arrives! Find the basics of your separates wardrobe in wool flannel—soft, luxurious, exquisitely tailored and detailed in the three sheath styles you prefer. Seat linings, back kick pleats. Classics plus blazing autumn colors. Sizes 8 to 18.

\$5



Just charge it at Penney's



Use Your Penney Charge Card.
Take advantage of these amazing savings!
Penney's Fashion Mezzanine

This Is It! FINAL CLEARANCE

All Sale Shoes Regardless of Former Price Now Only

4.88

This includes all Selby, Paradise Kitten, Naturalizer, Smartaire, Risque, Cobbler Brands.

Most of These Shoes Have Been \$12.95 to \$15.95

AND WOULD BE THE EQUAL of a
3 FOR 1 SHOE SALE

Final Clearance Starts Tomorrow, 9:30 a.m. and Will Continue Until All Sale Shoes Are Sold!

No Exchanges or Refunds

Johnston and Stewart
THE CORNER SHOE STORE

Central at Main Downtown Medford