

# Romania Takes Ambiguous Stand in Conflict

(Editor's note: Has oil wealthy Romania decided to cast her lot with Red China — and against Moscow — and against the Soviet-Sino conflict? Chief UPI diplomatic correspondent Karol Thaler recently toured the European satellite countries. Here is his report.)

By K. C. Thaler  
United Press International  
Romania, traditionally docile member of the Moscow-controlled bloc of European satellites, has taken an ambiguous stand in the Sino-Soviet conflict. She has her own reasons and they are not ideological.

Unlike the other European satellites, Romania has steered clear of open commitment in the ideological dispute between Moscow and Peking. But she has made a number of friendly gestures toward Red China and heretic Albania in recent months. Cou-

pled with the silence of Romania's strongman party chief, Gheorge Gheorghiu-Dej, there has been speculation about the country's loyalty to the Kremlin.

Dej's demonstrative absence from a summit meeting of satellite leaders with Premier Nikita Khrushchev in East Berlin this summer occasioned additional surprise.

**Reason To Assume**  
Nevertheless, there is little reason to assume that Romania is turning against Russia and switching to the Red Chinese camp.

The signs are rather that Romania is playing a subtle poker game in an effort to get better terms from Moscow in the satellite camp.

Romania, "liberated" by the Red armies at the end of World War II, was made to pay a high price to Moscow under the regime of Josef Stalin. Romanian oil and food were taken for Russia

on a heavy scale and so-called mixed companies, like the "Sovrom," exploited the country's resources.

Of late, Romania, freed by Khrushchev from such extortion, has embarked on a major industrialization drive, based on her considerable resources of oil and minerals. Alone among the satellites is Romania experiencing an economic boom. She has achieved the greatest relative degree of productivity in the whole of Europe, including the West.

**Counter-Running Policy**  
Aware of this spectacular development, the regime in Bucharest has decided to push ahead with industrialization to balance the country's hitherto prevalently agricultural economy. But this policy runs counter to the Soviet Bloc economic alignment of the satellites—COMECON — which wants Romania and Bulgaria — another of the satellites —

to leave industrialization to Russia, Poland, Czechoslovakia and East Germany.

The drive for "specialization," or "socialist division of labor," pushed by Moscow within COMECON would stifle Romania's ambitious plans. She resents this policy and has been opposing it firmly in recent months.

The move is basically Nationalist and not in keeping with Marxist demands for Socialist division of labor. But the signs are that Romania, encouraged apparently by the more independent policies of Poland and Hungary, has taken things into her own hands and is holding out for a Romanian-type Communism.

**Determine Own Structure**  
She wants to determine her own economic structure. Beyond this, she wants to have a freer hand in trading with the West as well as with the Communist East. Trade with the West would help Romania to get basic machinery that she cannot get from her Communist brethren who are obviously in no hurry to help her along in the process of industrializing.

This does not make Romania a pro-Western nation, nor anti-Moscow. Her industry is nationalized 100 per cent and her agriculture about 85 or 90 per cent.

Khrushchev sent one of his

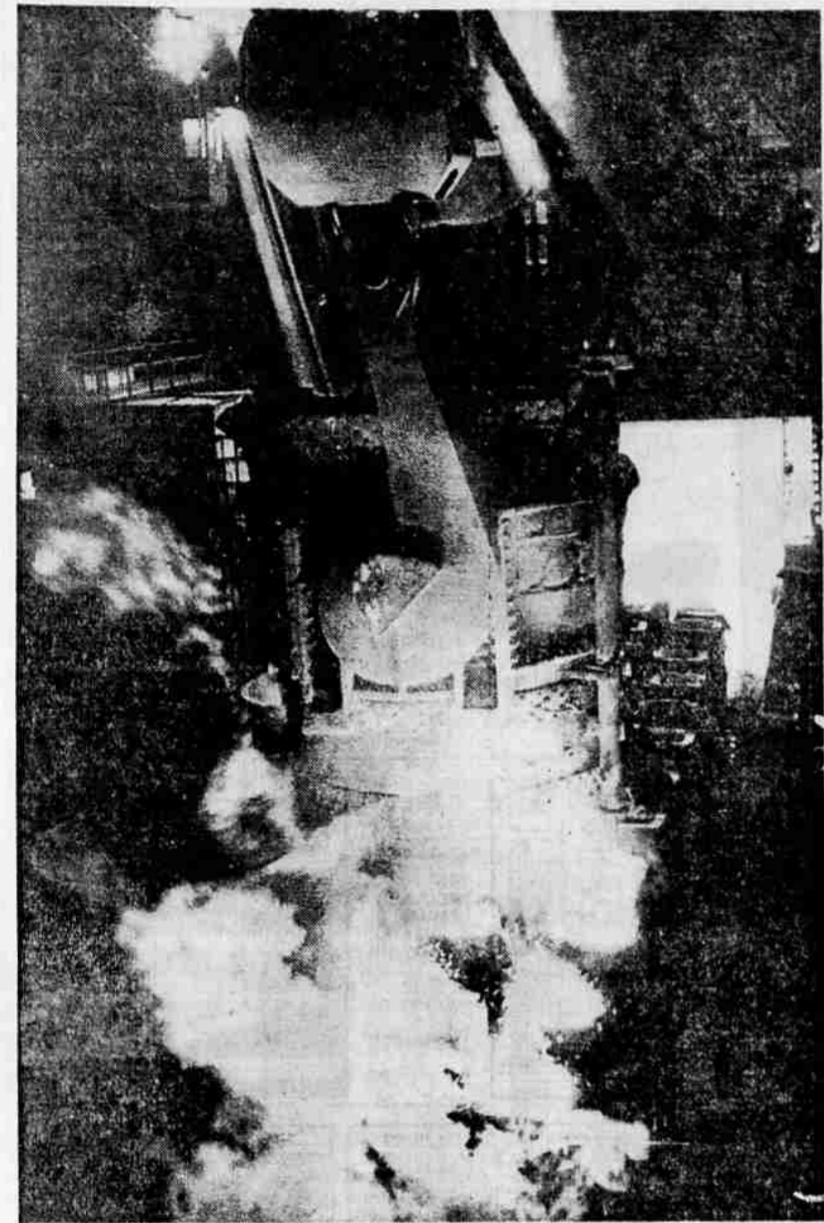
top men, Politbureau member Nikolai Podgorny, to Bucharest last month to sway Dej but failed. Dej probably stayed away from the East Berlin summit with Khrushchev to avoid a personal confrontation with the irate Kremlin chief.

It is against this background that Romania's position in the Sino-Soviet dispute should be viewed.

**Now Holding Out**  
It seems as if Romania's Communist leadership is now holding out on Khrushchev to force a deal whereby Romania would formally back Khrushchev's line against Peking and Moscow would stop trying to put brakes on Romania's self-seeking economic development plans.

Basically, Romania has nothing to gain by backing Red China. But by playing hard to get, she has made a few overtures toward Red China as a form of blackmail pressure on the Kremlin. A few weeks ago Romania signed a cultural agreement with Red China, after earlier concluding a new trade accord with Peking under which trade in 1963 is to increase by 10 per cent.

Bucharest also sent an ambassador to Albania with whom Russia and other satellites broke last year and received an Albanian ambassador in Bucharest.



CAST IN MOLDS—Steel is cast in ingot molds at Hunedoara, Romania, iron and steel combine, in this 1961 photograph. Population of this Transylvanian town has been

multiplied by 10, and the life of the people vastly changed by the growth of steel and iron mills. (UPI)

## Member of Domiciliary Greets Sister

White City — Michael Dillon, member, writer and teacher at the Veterans Admini-

stration domiciliary here greeted his sister last week after 23 years.

His sister — Sister Helen Edward, mother superior of St. Mary's parochial school, Jersey City, N.J. — was travelling with a companion, also a friend, Sister Adele of Jersey City. The two Sisters of Charity were en route to Portland to attend a convention of school principals.

Dillon has been in the West since 1939. He has lived in Idaho, California and Washington besides the Rogue valley. A former accountant, he now teaches a bookkeeping class here. Also he teaches Spanish, both beginners and advanced, to interested members. His interest led him into teaching a class in aphasia, aiding those whose vocal cord have been eliminated through surgery. He writes and has been recognized several times in the National Hospitalized Veterans Writing projects from Chicago.

Dillon is one of five brothers who served the United States during World War I. He was in the Navy much of the time aboard the USS Bridgeport, operating out of Brest, France. His father came to this nation from Ireland late in the 1880's and for many years was superintendent of the gas works for the Central Railroad of New Jersey.

The two Sisters of Charity were overwhelmed by the West and particularly by Oregon and the Rogue valley. "It is so beautiful, so orderly, clean and neat and your home with the grounds and all its cleanliness makes me understand why you stayed out here," Sister Helen Edward told him.

Dillon is a former baseball player, track captain and basketball player for St. Peter's preparatory school at Jersey

**New Columbian Optical**

**Diamond Sun Glass Lenses**

guaranteed against breakage!

Because of an intense heat treatment, these lenses have many times the strength of ordinary sun glasses. If a lens should break, we will make replacement without charge. Available for men and women.

• Convenient Credit  
• We give 2% Green Stamps  
our 58th year  
**COLUMBIAN OPTICAL CO.**  
Medford Shopping Center  
772-9990



## Unclaimed Furs To Be Sold in City

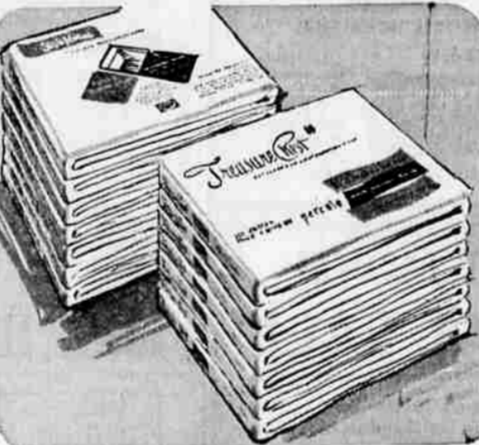
(NOW BEING SOLD)  
These quality furs are unclaimed for or reclaimed from storage and reconditioned "trade-ins" when we closed our San Francisco store.  
Furs by Samuel, Medford Shopping Center has a group of fur coats, capes, jackets and coats. These good furs are going to be sold "real cheap" — and you may get them in Lay-A-Way for this fall or even a charge account.

Imagine buying a dyed muskrat or dyed marmot stole for only \$49.50. Imagine a fox cape for only \$29.50. Many of these furs look like new, but must be labeled "second hand used fur," for origin unknown.  
If you want to buy a good \$15 or \$20 fur bargain, don't miss this unusual sale. Fur products labeled to show country of origin of imported furs. All prices plus tax.  
(In Fur Business over 30 years.)  
**FURS BY SAMUEL IN THE MEDFORD SHOPPING CENTER**  
PHONE 779-1949

NO MONEY DOWN ON CREDIT AT WARDS—JUST SAY "CHARGE IT!"



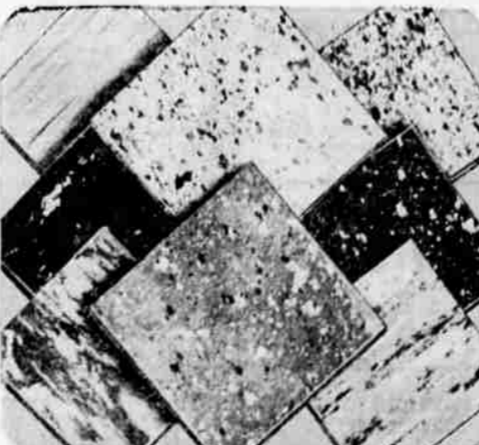
SEMI-ANNUAL BLUE RIBBON EVENT  
**SALE FOR THE HOME**  
The time and place for great buys on quality furnishings!



## PERCALE SHEETS

FLAT OR FITTED AT SALE PRICES!

Fine 186-count cotton percale in trim flat style or Sanitized fitted with work-saving 4-corner stretch.  
Full, flat or fitted ..... 2.23  
Pillow cases ..... 2 for 90c  
Twin, reg. 2.19  
**1.99**  
FLAT OR FITTED



## ALL-PURPOSE TILE

GILTLINE VINYL AT A GOOD SAVINGS!

Beautiful tile, so easy to clean! Tough vinyl asbestos installs easily on any floor. Spatter, stria in selected colors. 9x9" size. Designer colors. . . . 11 1/2c each REG. 10 1/2c

117 S. CENTRAL 773-7301

# WE'RE MOVING

To our friends and customers we are delighted to announce that, effective July 29, we are moving our business to a new location. Your increased patronage has made it necessary for us to seek larger facilities. So, for your confidence in our service and your convenience, we are moving to the corner of Main and Front. We look forward to serving you now from our new location at 100 East Main.



Glenn McCullough Don Day

## FREE PARKING — EASY TO FIND

For your convenience, we are now members of Park and Shop. You'll find the lot behind Robinson Brothers or the JCF Int across the street handy to use. Just park your car and we'll be happy to validate your ticket.



## ATKIN-McCULLOUGH INSURANCE, Inc.

Corner MAIN and FRONT  
(Former Pick's Shoes Location)

Call . . . 773-7441



## BIG 3-IN-1 SALE!

CARPET, PADDING AND INSTALLATION

Popular Du Pont continuous filament nylon pile combines beauty and ease of care! Resists shedding, crushing, soil. Spills disappear seconds after cleaning, leaving no stains; 7 colors stay clear. 12' and 15' widths. Rubberized pad and installation included.

**7.99** sq. yd. installed

**DUPONT 501\* NYLON PILE**  
Continuous filament nylon face won't fuzz, pill or shed. 6 colors.

**8.99** sq. yd. installed  
Reg. 10.23

**RICH NEW VELVET WEAVE**  
Fine imported wool cut and loop pile design. Tweeds. Mohproof.

**9.99** sq. yd. installed  
Reg. 11.23

**OUR FINEST AXMINSTER**  
Long-wearing nylon pile is slow to show soil. Resists matting. 7 patterns.

**10.99** sq. yd. installed  
Reg. 12.23

**EASY-CARE NYLON PILE**  
Du Pont 501\* Wilton weave carpet Resilient; won't shed. 7 tweeds.

**11.99** sq. yd. installed  
Reg. 13.23

**ALL-WOOL PILE WILTON**  
Durable random-sheared loop pile in "3-D" look! 8 tweeds or solids.

**12.99** sq. yd. installed  
Reg. 14.23

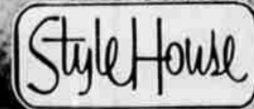
**NO MONEY DOWN**

Take 4 to 7 years to pay on most carpet installations.

All above carpet in 12-15' widths

SHOP AT HOME  
Call 773-7301

Wards carpet expert will bring samples to your home, advise you without obligation!



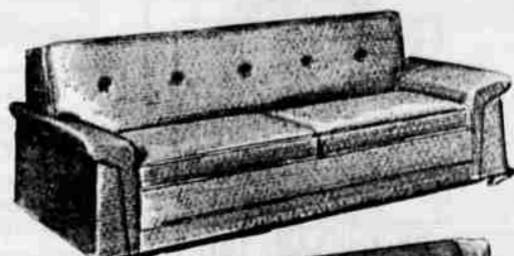
## A MADE-UP BED INSIDE!

EXCLUSIVE STYLE HOUSE SOFA OPENS TO SLEEP 2

YOUR CHOICE  
**219.95**

Wards smart sofa stars in your living room by day, has wonder-wearing nylon frieze upholstery, and cushions of 5" Ward-Foam\*. At night, remove cushions, tug lightly, out comes your completely made-up innerspring bed!

\*Ward's name for urethane foam cushioning



Open 9:30 to 5:30 Fridays Till 9 FREE PARKING