



**MARK'S**  
**Groceteria**  
 THE PLACE TO GO FOR THE BRANDS YOU KNOW  
 Sixth and Grape  
 Limit Rights Reserved  
 No Sales to Dealers  
**LOTS OF FREE PARKING**

**GROCETERIA BAKERY**  
 Large Size  
**Angel Food** Plain ..... 49¢  
 HOT DOG &  
**Hamburger Buns** per doz. 49¢  
**Potato Rolls** ..... per doz. 19¢  
**Fruit Rolls** in foil pan ..... 35¢  
 All Groceteria Bread is 6 Hours FRESHER  
**EVERYTHING BAKED FRESH RIGHT IN THE STORE**

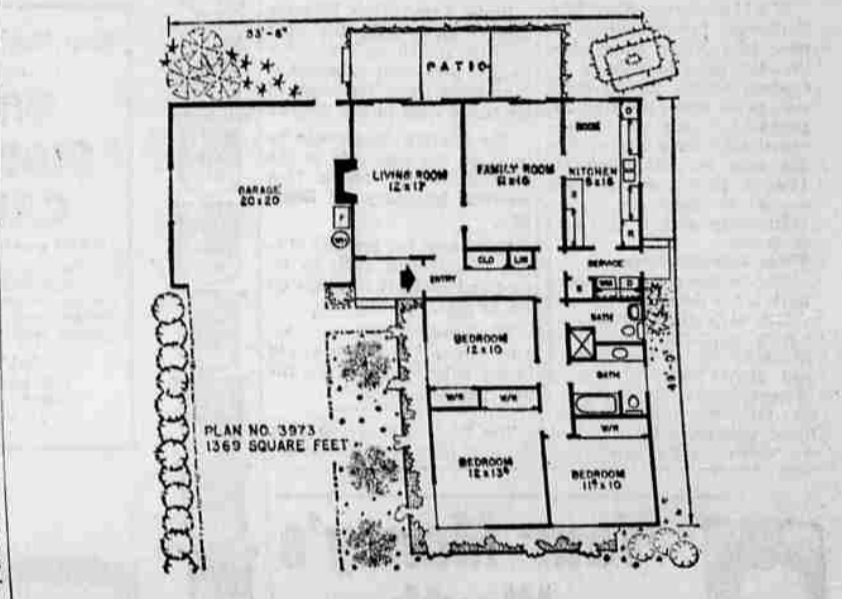
**QUALITY FOODS** *at BUDGET PRICES!*  
**SWIFT PREMIUM FULLY COOKED PICNICS**  
**39¢ lb.**  
 LOCALLY CURED  
**BEEF BACON** ANY SIZE PIECE **59¢ lb.**



**Groceteria Fountain**  
**CHICKEN DINNER 88¢**  
**MILKSHAKES 17¢**  
 Hours: 8:30 a.m.-7:30 p.m.  
 Daily—(Except Sunday)  
**DINNERS SERVED TILL 7**  
 Monday thru Saturday

**Fresh Sea PERCH**  
 OCEAN CAUGHT  
**39¢ POUND**

**This Week's Plan for Home Builders**  
 By HIAWATHA ESTES  
 This home proves that you can have a lot of comfort in a minimum area. There is space for fun in every corner of the house. Adults and children can entertain separately in the living room and family room-kitchen, with privacy for each.  
 It is somewhat difficult to plan a home with this number of rooms and keep the square footage below 1400 square feet. It really becomes a problem if you insist on a center hall plan where no waste space will be tolerated. This challenge has been overcome here as the entry hall leads directly to the living, work and sleeping areas without any cross circulation.  
 You can obtain all the privacy and outdoor living you want if you locate the living areas of your home at the rear and then open up these rooms as we have here with sliding glass doors and windows to let in the sun and a view of the garden. There is a window in the front wall of the living room for those who want a view towards the street.  
 Relaxed Family Life  
 Today we enjoy a more relaxed kind of family life than ever before. This means, for one thing, less use for a formal dining room and more demand for a useful and all-purpose family room. A drop-leaf table in the family room could be used when entertaining while family meals can be served in the roomy nook in the kitchen.  
 There is access from the rear door through the service area to the center hall. This eliminates much foot traffic through the kitchen, which any housewife will appreciate.  
 All of the plumbing has been located in one small area. The service and two baths are all in line which will save considerable plumbing installation.  
 The plan as illustrated here could be constructed on a relatively narrow lot. However, it would fit a much more narrow site by removing the garage from the side of the house and either building it as a detached garage at the rear of the lot or by adding the garage to the front bedroom wall.  
 Complete working drawings for this plan may be purchased at a cost of \$7.50 for the first set and \$5 for each additional set when ordered at the same time. The plan will be available at these prices until Nov. 7. Please allow two to three weeks for delivery.  
 The following home plan books are also available: Hallmark Homes \$1. Award Homes \$1. Town & Country Homes \$1. Homes for Living \$1. Homes of Distinction \$1. Ranch & Modern Homes \$2. All books, a \$7 value, only \$5. Send all orders for either plans or books to: Hiawatha Estes, P.O. box 404-T, Northridge, Calif.



**Valley Lockers Entered in Talent**  
 Talent - The Valley Lockers, Talent, was burglarized for the second time in 3 1/2 months when burglars broke a back door to the building and took items last night valued at \$100.  
 According to Chief of Police Charles Roberts, the items missing included some canned hams, beer, gum, cigarettes, and two pair of white gloves.  
 The entry was discovered shortly before 7 o'clock today. Assisting in the investigation is the Jackson county sheriff's office.

**50** Extra Thrifty Green Stamps With Each U.S.D.A. CHOICE BEEF **Round Steak**

**50** Extra Thrifty Green Stamps With Each **FRESH SORAN'S FRYER**

**50** Extra Thrifty Green Stamps With Each 3-LB. PKG. **FRESH GROUND BEEF**

**50** Extra Thrifty Green Stamps With Any 3 PKGS. SLICED **LUNCH MEATS**

**MARK'S GROCETERIA GARDEN FRESH**  
**SAVE MORE FRUITS & VEGETABLES**  
**TOMATOES** LARGE SLICING **10¢ lb.**  
 Jumbo Size Cantaloupes . . . . . 9c lb.  
 Large Slicing **CUCUMBERS 10¢ Each**  
 Large Stalks **CELERY 19¢ Each**




**"Clean clothes bleach-white without adding bleach? GO ON!"**

It's true! For now there's a Chlorinated Detergent! Take any washload to which you would normally add both a detergent and chlorine bleach. Now wash these clothes in Pruf, the world's first Chlorinated Detergent. Just one cup of Pruf (nothing more) is all it takes to clean them bleach-white!

Only Pruf lets you clean clothes bleach-white without adding bleach. That's because only Pruf brings you Chlorinated Cleaning: the cleaning action of a detergent and the bleaching action of chlorine bleach combined, for the first time, in a single laundry product!

With Pruf, you can forget about overbleaching once and for all! And Pruf is great for disinfecting diapers, removing tough stains and general household cleaning, too. So stop adding bleach forever! Get Pruf, the world's first Chlorinated Detergent.

**WORLD'S FIRST CHLORINATED DETERGENT**



WHITENS • CLEANS • DISINFECTS  
 © Colgate-Palmolive Company, 1963

