

Farm Bureau President Wants Freeman To Remain

Washington—UPI—As president of the Farm Bureau, Charles B. Shuman has had many a clash with Secretary of Agriculture Orville L. Freeman. But Shuman has no desire to see Freeman bounced from his cabinet job. In fact, Shuman wants Freeman to remain the Administration's farm boss. "We like Freeman," Shuman said, speaking for the Farm Bureau at a luncheon with reporters. "We hope Freeman is not replaced. He is a good man. We are more anxious for the Kennedy Administration to change directions than to change secretaries. "We know Freeman. We don't know who would replace him, or what the replacement would be like. We

doubt that Freeman is a political liability." Shuman expressed himself on Freeman and other farm subjects after testifying before a House subcommittee on the Farm Bureau's proposals for wheat and feed grain legislation. He gave his appraisal of Freeman when asked if the secretary's current visit to

Russia is an indication that he is on the way out of the administration. "I have no objection to Freeman traveling in Europe," Shuman said. "After all, former Secretary Ezra Taft Benson went to Europe, took half his family, and many of his friends."

Shuman, a registered Democrat, has endorsed many farm policies similar to those advocated by the Eisenhower Administration. He has opposed many of the big farm policy actions of the Kennedy Administration. "We've (the Farm Bureau) done better under 2 1/2 years of the Kennedy Administration in checking socialism in agriculture than we did under eight years of Eisenhower," Shuman said. "The Kennedy Administration presented us with a challenge—supply management. We have checked it. The Eisenhower Administration did not offer us a challenge."

Shuman believes the Farm Bureau's success in turning back the Administration's wheat program for 1964 in a grower referendum May 21 was a turning point in agriculture. "It was a turning point from more and more controls, more and more socialism, and toward laissez faire—let the farmer do things for himself," Shuman said. He is convinced there will be some wheat and feed grain legislation this session despite reluctance of Administration leaders to plug for it in the wake of the referendum defeat. Shuman said he was not prepared to predict that there was a 50-50 chance for farm legislation, a 40-60 chance, or a 30-70 chance. He said the Administration undoubtedly is opposed to one section of existing wheat legislation—the provision requiring another referendum next year based on the same premise as this year's balloting. He said the Administration does not want a referendum next year, "because I believe the results would be worse than the one in May." But even if there is no legislation, Shuman said, he does not foresee "chaos" in American agriculture.

Wheat Forecast
Shuman said he doesn't believe there will be much, if any, more wheat planted this fall than last. He said that with the low price support for wheat—\$1.25 per bushel—farmers will see that it's more profitable to grow soybeans, perhaps even more feed grains.

Shuman said the American farmer should not be tempted by high price supports to grow more than can be sold in the market place. He said price support on any commodity should be sufficiently low so that the market price of that commodity would not get down to the support price.

Shuman said he didn't know much about the John Birch group, "except that it has become a nasty name."

He was asked what he thought of farm knowledge of GOP presidential hopefuls. He said that a member of Congress would have an excellent opportunity to become acquainted with farm policy. He added that Sen. Barry Goldwater (R-Ariz.) had an opportunity to be "excellently informed."

IWA, Scott Paper Company Resume Negotiations
Portland—UPI—Contract negotiations were scheduled to continue here today between representatives of the International Woodworkers of America and the Scott Paper Co. in an effort to keep the seven-week-old Pacific Northwest lumber strike from spreading.

The two sides resumed meetings Monday. The IWA represents about 400 loggers and boom men who supply logs to Scott Paper Co. About 25,000 members of the IWA and the Lumber and Sawmill Workers unions already are involved in a strike-lockout in Oregon, Washington, California and Montana. It began June 5.

Details Announced
Meanwhile, details of a proposed three-year contract agreed upon by representatives of the unions and the Simpson Timber Co. in Portland Friday were announced Tuesday.

The pact, which must be ratified by union members at Simpson plants, calls for a wage increase amounting to 33 1/2 cents per hour during a three-year period. The hourly wage increases provided for a 10-cent hike retroactive to June 1, 5 cents more Dec. 31, 7 1/2 cents next June 1 and 7 1/2 cents June 1, 1965.

The pact also includes sections on classification adjustments, travel time for woods employees and formation of a joint committee on automation.

California's crop of oranges brings more money each year than the entire production of the famous gold fields which brought about the gold rush days in 1849.



IT'S CHRISTMAS IN JULY WITH *Bucilla's* HOLIDAY NEEDLEWORK...

As featured in McCall's Needlework Magazine. Gifts to please everyone on your Christmas list. Start in July... have them finished before Santa packs his sleigh.

Group 1

FOR THE SMALL FRY, CUDDLY, LOVABLE HUG-ME-TOYS...

- A. 30" Tall Sambo.....3.99
- B. 25" Tall Bashful Betty.....2.99
- C. 20" Seated Jo Jo the Clown.....2.99
- D. 17" High Pinky the Elephant.....3.99
- E. 8" High Snoozy the Pup.....2.99



Group 2

JEWELED NOVELTIES FOR WALL, DOOR or WINDOW DECORATIONS

- A. Felt Decoration Size 11" x 46".....3.99
- B. Card Holder with 4 pockets 37" long.....3.99
- C. Kiddie Growth Panel Size 12x36".....2.59
- D. Flowerbos 1964 Felt Calendar 16x24".....2.49



Group 3

SMALLER JEWELED NOVELTIES AND DECORATIONS

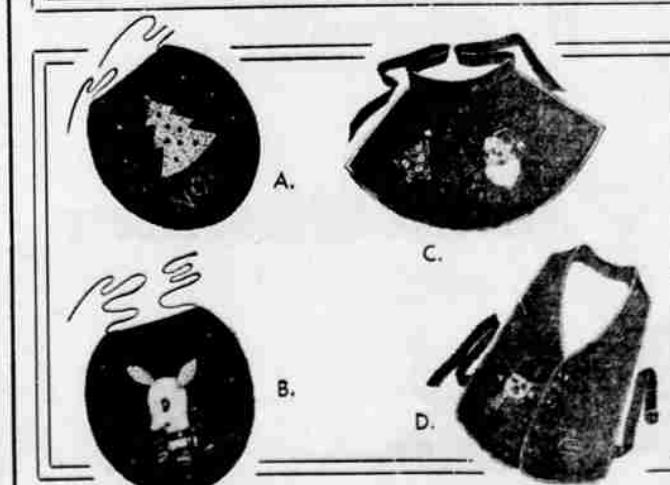
- A. Santa's Chimney Felt Mail Bag.....3.59
- B. Toy Shop Felt Kiddie Stocking.....2.99
- C. Felt Door Chime or Window Decoration.....3.99
- D. Set of (4) Decorations of Velvetex.....3.99



Group 4

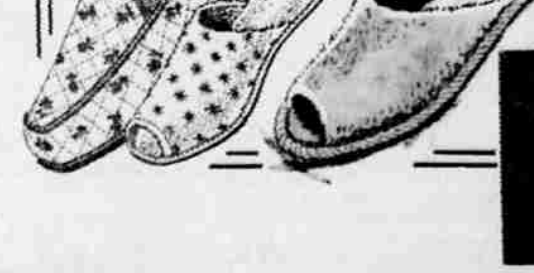
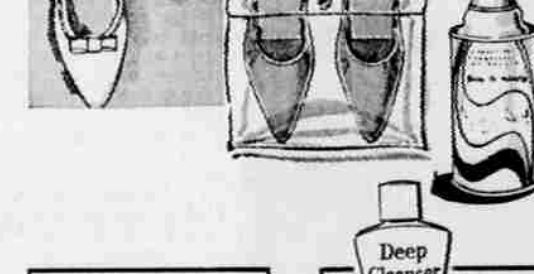
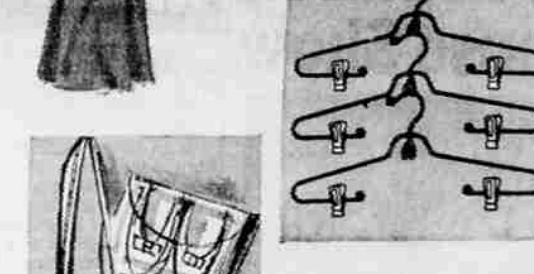
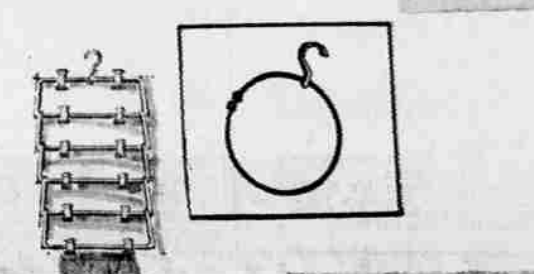
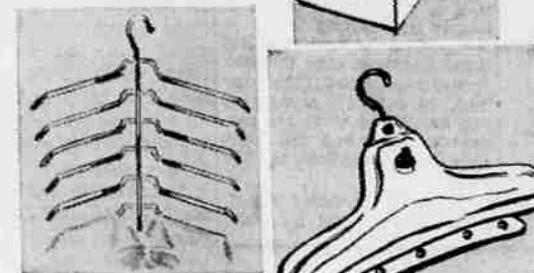
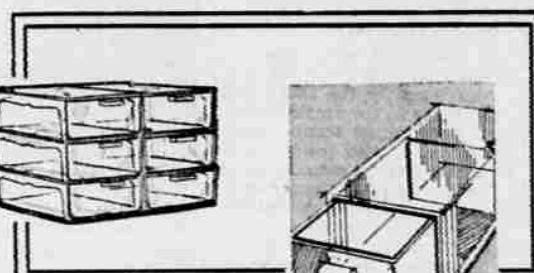
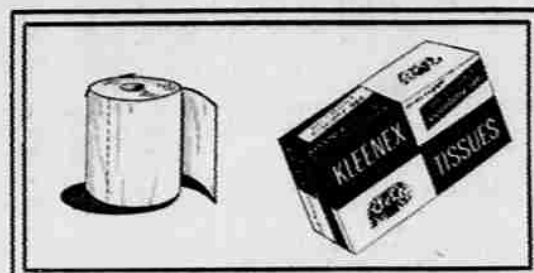
BATHROOM LID COVERS—APRONS

- A. Felt Glitter Tree.....1.99
- B. Felt Reindeer Plush Lid Cover.....2.99
- C. Ladies' Christmas Party Apron.....2.99
- D. Man's Christmas Party Vest.....2.99



3-WAY SALE

- NOTIONS
- CLOSET AIDS
- COSMETICS



NOTIONS
REG. 33c TWIN PACK BATHROOM TISSUE (Limit 2) 1/2 PRICE
REG. 29c SPACE SAVER BOX KLEENEX (Limit 2) 1/2 PRICE
(Sorry, no phone calls on above)

PANDORA VUE CHESTS
Reg. 1.69 1.29
Reg. 1.98 1.59
Reg. 4.98 3.98

PLASTIC HANGER SETS
Dress/blouse, ribbon tied, set of 8 88c
Women's Suit hanger, set of 4 88c

EXCELLENT SPACE SAVER
6 garments on one hook 88c
Inflatable Drip-Dry Hangers 2 for 1.49

METAL BELT RING
Also for ties 2 for 88c

METAL ADD-A-HANGER
For blouses and skirts 88c

TRAVEL SLIPPERS
Cushioned soft leather soles. Ass't. colors. Vinyl packaged 1.00

PIN CURL BONNET, CURLER CADDY KLEENEX CONTAINER
Ass't. prints and laces 1.00

BEACH BAGS
Plastic lined 2.00

BOUNCY ANGEL TREADS*
Non-skid soles. Ass't. styles 2.00

TERRY WRAP SAK*
Solid pink or turquoise 5.00
Tahitian print, blue/lilac 6.00

TERRY CHAISE LOUNGE COVER
Burnt orange, yellow, blue 4.00

MODART HAIR SPRAY
Reg. or Super hold. Reg. 1.95 1.59 p.t.

DOROTHY GRAY CLEANSING CREAMS
Dry Skin Cleanser
6 oz. reg. 3.00 1.50 p.t.
12 oz. reg. 5.00 2.50 p.t.
Salon Cold Cream
6 oz. reg. 3.00 1.50 p.t.
12 oz. reg. 5.00 2.50 p.t.
Two Minute Magic
10 oz. reg. 2.00 1.00 p.t.

DELEGAR SOAPS
French handmill Cameo soaps. Rose Geranium, Carnation, Gardenia and Gold embossed gift packaged guest soap 1.00

HELENA RUBENSTEIN BEAUTY PAIRS SALE
Buy one... get one free.
Lipstick 1.50 p.t.
(Your free bonus—Nail Polish)
Facial Cleanser 1.50 p.t.
(Your free bonus—Skin Dew Moisture cream)

