

**6 A**  
**Crude Tools May Be Link Between Two Americas**

New York, N. Y. (Scientific American Feature)—Crude tools of volcanic glass accidentally discovered in the mountains of Ecuador four years ago by A. Allen Graffham, an American geologist and amateur archaeologist, may provide a long-sought link between the prehistoric men of the U. S. and those of South America, according to William J. Mayer-Oakes, professor of anthropology at the University of Manitoba in Winnipeg, Canada.

"By comparing the kinds of tools made at various sites," Dr. Mayer-Oakes explains, "investigators have learned much about the relationships which existed among the ancient people who inhabited the North American continent and reconstructed their movements across the U. S. in some detail."

"In recent years they have been able to find traces of North American tools in countries as far south as Mexico and Central America. Now the Isthmus of Panama, however, the trail of these cultures seemed to end abruptly. Most sites in South America yielded quite different artifacts despite the fact that all of these peoples appear to have had their origins in the nomadic hunters who crossed the Bering Strait from Asia on a land bridge which existed at the time of the last ice age."

**Good Evidence**  
"There was good evidence that men had camped in caves near the Strait of Magellan some 10,000 years ago but nothing to explain how quickly and by what route they had arrived there. What was needed was the discovery of a tool assemblage of sufficient size and richness to show relations between these and other sites in South America and link them to North American sites."

"A site of this character has now been investigated high in the Andes near Quito in Ecuador. El Inga, as Robert E. Bell of the University of Oklahoma and I have named the place, was first discovered by A. Allen Graffham who stumbled across the site during a week end outing and was impressed by some fragments of stone which appeared to be the work of ancient toolmakers."

"In particular he was attracted by certain tools of volcanic glass which had been fluted, or chipped from the base along the axis of the points. Both the shape and fluting of these tools resembled the so-called 'Folsom' points and 'Clovis' points found in the western and southwestern U. S. Graffham reported his find to Bell and when Bell subsequently invited me to examine the material I was struck by another aspect of the collection. For me the most distinctive items were several fish-tail points identical in shape with points unearthed nearly 30 years ago at the Strait of Magellan."

**May Provide Link**  
"It was apparent to us that the excavations at El Inga might provide the link that has been lacking between the Paleo-Indians of the Plains region and their counterparts in the hemisphere's far south. During the last three years more than 15,000 tools and fragments of tools from El Inga have been recovered."

"From these we selected for study 6,000 that obviously were fashioned, functional tools. I have been analyzing this collection at the University of Manitoba while Bell works at Oklahoma. In the character of the tools we find much evidence of relations between the early Americans of both continents but this is all tentative. What is not yet determined is just how characteristic of specific peoples and times the point styles are which have been collected at all sites."

"If more firm data are established for certain styles, and if it can be shown that they are good 'horizons' or time markers, tracing their occurrence across the continent should eventually reconstruct the pattern of early man's nomadic wanderings. The lack of dates at El Inga and many other sites is a handicap in this effort. But the fact that tools recovered at El Inga strikingly resemble those made both by the ancient men of north and far south may yet lead to an insight that will make the whole jigsaw puzzle complete."

**Subscribers**  
To report improper or non-payment of the Mail Tribune in land use at 414 1/2 Ave. B, Victoria 2-2888 before 4:45 p.m. daily. Regular delivery arrives shortly after 5 p.m. in our monthly office, thus stimulating special messenger service.

**SAFEWAY**

**Piedmont Mayonnaise**  
qt. **29c**

**COFFEE**

**FOLGER'S 49c**  
3-lb. Can \$1.45  
2-lb. Can 97c  
1 lb. Can  
Instant Coffee  
Folger's 10 oz. \$1.49 6-oz. jar 99c

**EDWARDS 47c**  
3-lb. Can \$1.39  
2-lb. Can 93c  
1 lb. Can  
Instant Coffee  
Safeway 10 oz. \$1.19 6-oz. jar 75c

**GREEN GIANT**

**CORN** Cream Style or Whole Kernel, 303 Can  
Whole Kernel, 12-oz. Can  
**NIBLETS** Whole Kernel, 12-oz. PEAS No. 303  
Mexicorn, 12-oz. can

**6 for \$1**

Asparagus Cut Green Spears 10 1/2-oz. can 29c  
Peas Delicate, small sweet 303 can 2 for 45c

**SAFEWAY**

**CHUNK TUNA**  
Bumble Bee, light tuna, 1/2 can.

**4 for \$1**

**BARGAIN FESTIVAL**

**Shopping Hints From Safeway**

- Hi Ho Crackers** Sunshine party cracker, 16 oz. **43c**
- Corn Chips** Nalley's. For TV nibbling, reg. pkg. **29c**
- French Dressing** Kraft. Spicy and Tomato, 8 oz. **31c**
- Blue Cheese** Kraft. Roka Dressing, 8 oz. **45c**
- Italian Dressing** Kraft. Low calorie, 8 oz. **41c**
- 1000 Island** Kraft Dressing 8 oz. jar **35c**

**Pineapple Juice** Lani. Bit of Hawaiian sunshine. 46-oz. can **5 FOR \$1**

**Potato Salad** Made by Lucerne. Finest Quality at a low, low price. NOW Pint **29c**

**Spaghetti** Franco-American. Easy to heat and serve. 20-oz. can **5 FOR \$1**

**Facial Tissue** Truly Fine, white, pink, yellow, aqua. Box 400 **5 FOR \$1**

- Whipping Cream** Lucerne pint **65c**
- Lucerne Salads** Cola Slaw, Carrot-Raisin, Macaroni. pint **29c**
- Baked Beans** Lucerne, ready to serve. carton **29c**
- Lucerne Spaghetti** or Macaroni & Cheese. carton **29c**
- Sour Cream** Lucerne. Adds a flavor touch. pint **59c**

**FROZEN FOOD VALUES**

**CORN • FRENCH FRIES**  
Bel-air, Kernel-Reg. and Crinkle

Regular Size Packages **3 FOR 49c**

Expect to find an especially festive atmosphere at Safeway this week. When bargains like these beckon from all over the store, folks always have great fun with their food shopping. It's a pleasure you're welcome to share. Come see all the features in fine meats, produce, and in all the other departments too. You'll want to stock your home shelves at these low prices.

**Lucerne Party Pride ICE CREAM**  
Choc. Marble, Cherry Vanilla, Chocolate, Butterfinger, Vanilla, Macadamia Nut, Butterfudge

Peppermint Candy, Banana Nut, Marshmallow, Maple Nut, Neapolitan, Choc. Chip Almond, Butter Pecan

14 Ass't Flavors **69c**  
1/2 Gal.

**Famous Brand Feature COTTAGE CHEESE**  
Gallon . . . . . 75c Quart . . . . . 38c

High in protein  
Low in calories **19c**  
Pint

**Pickles** Fanning's, bread and butter, 15-oz. jar **2 FOR 49c**

**Cat Food** Blue Mt. Chicken and Liver, Tall cans **7 FOR \$1**

**Detergent** White Magic. Has a Touch of Magic. 49 1/2-Oz. **59c**

**Low Prices Always**  
**Deviled Ham** Underwood's—2 1/2-oz. Pkg. **2/45c**  
**Calgonite** For Automatic Dishwashers. 20-oz. **49c**

**PATIO CHAIRS**  
Here's a close-out special—limited amount. Aluminum—non-rot nylon webbing. **\$3.99**

**BRIQUETS**  
Royal Oak 10-lb. Bag **69c**  
Satellite 10-lb. Bag **59c**

**Mrs. Wright's Angel Cakes**  
Regular Angel, Custard Angel, or delicious Cherry Chip Angel. Each—**29c**

**Orange Rolls** Mrs. Wright's Always fresh. Pkg. **43c**

**Skylark Rolls** Poppy Seed 10 Ct. **35c**

**Club Rolls** Skylark 6 Ct. **33c**

**INFLATED TOYS**  
Disney Tennis Sets — Raft With Rope — Animal Split Ring — Disney Boats — Swim Ring **88c ea**

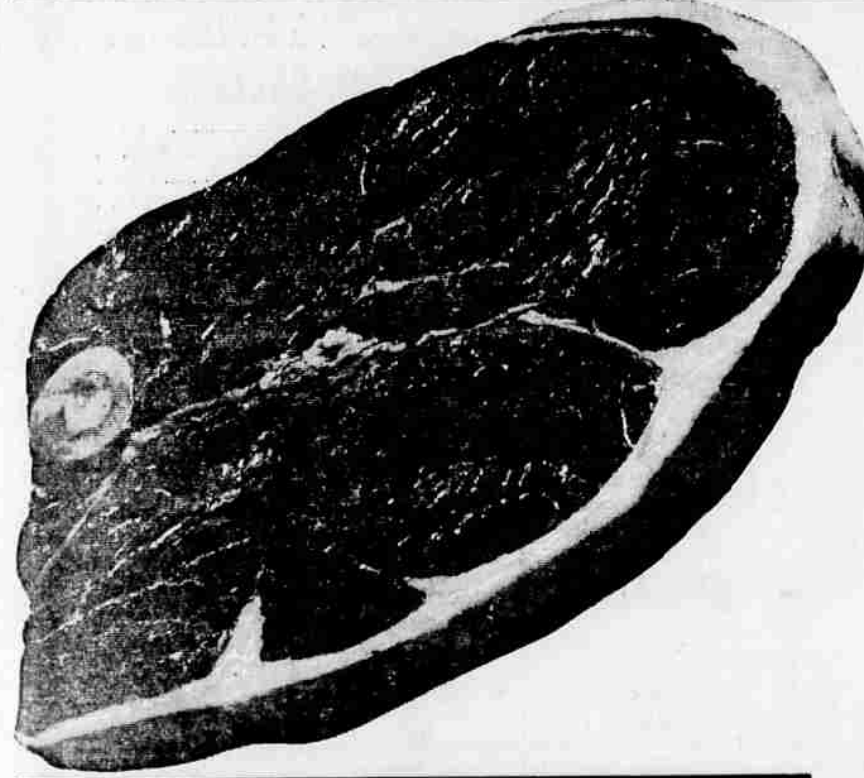
**LOAMITE** 20-lb. bag Fertilizer and soil conditioner for lawn and flower beds. Will not burn. Long-lasting effect. **\$1.98**

**GARDEN HOSE** Half inch, reinforced garden hose. Guaranteed 50-foot length. **\$4.95**

**PEACHES**  
Extra Fancy Red Havens

**2 lbs. 25c**

**SUMMER-WONDERFUL WAYS WITH PEACHES**  
• Blend breakfast cereal with peaches for a quick and easy snack.  
• Spread plain yogurt with peaches for a delicious dip.  
• For a peachy dressing mix sliced peaches with mayonnaise and a dash of lemon juice.  
• Make an open-faced salad with peaches, lettuce, and cheese.  
• Use peaches in your favorite pie recipe.



**PORK CHOPS**  
Finest quality pork. Lean center-rib chops. **lb. 69c**

**ROUND STEAK**  
U.S.D.A. Choice Beef, Full Cut

**lb. 69c**

**Pork Roast** Rib-Loin Portion Mid-western pork. lb. **43c**  
**Spareribs** Country style Meaty ribs. lb. **49c**



**RUMP ROAST**  
Family Favorite Choice Beef Bone In **lb. 69c**

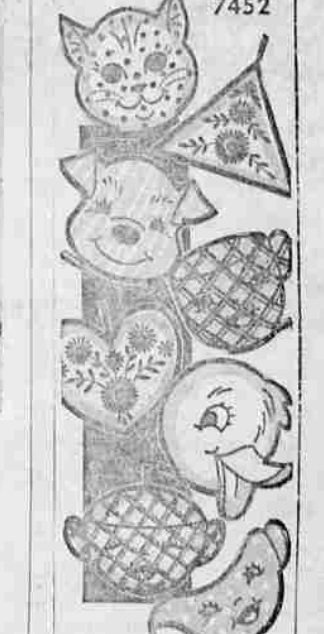
**SAFEWAY**

**SAFEWAY**

**Applications Being Taken for Inspector**  
Jacksonville — Applications for the post of sanitary sewer inspector for the city of Jacksonville are now being taken here.

Applications should be sent to the city recorder's office before 8 p.m. Monday, July 22. Certain qualifications must be met by applicants.

The lowest point of the earth's surface is located at the bottom of the Dead Sea, about 15 miles east of Jerusalem. At that point, it is 1,292 feet below sea level.



**Hold Everything**  
7452  
by Alice Brooks

Choose your pet, potted plants, or make the entire set with a young girl's eager help.

Personality pot holders—fun to use and display, great for gifts. Bazaars, just 2 pieces for each Pattern #342; transfer 8 designs about 6 1/2" inches.

13 P.Y. FIVE CENTS (coins) for this pattern—add 15 cents for each pattern for first-class mailing and special handling. Send to Alice Brooks, Medford Mail Tribune, Needlecraft Dept., P. O. Box 163, Old Cheshire Station, New York 11, N.Y. Print plainly NAME, ADDRESS, ZIP CODE, PATTERN NUMBER.

DBA's Biggest Needlecraft Show stars smocked accessories—let our new Needlecraft Catalog! Plus over 200 fresh-to-you designs to knit, crochet, sew, weave, embroider, quilt. Plus free pattern. Send 25c now.

**Styled to Slim**  
9392  
SIZES 12-12 1/2  
by Marion Martin



For a typical day in your life, choose a lightly, coolly cut, casual, that's colorful, yet not bare. See how skirt falls in easy folds.

Printed Pattern 9392 Half Size 12 1/2, 14 1/2, 16 1/2, 18 1/2, 20 1/2, 22 1/2. Size 16 1/2 requires 3 1/2 yards 39-inch fabric.

FIFTY CENTS in coins for this pattern—add 15 cents for each pattern for first-class mailing and special handling. Send to Marion Martin, Medford Mail Tribune, Pattern Dept., 232 West 18th St., New York 11, N.Y. Print plainly NAME, ADDRESS, ZIP CODE, with SIZE and STYLE NUMBER.

CLIP COUPON FOR 50¢ FREE PATTERN in our new Fall-Winter Pattern Catalog, just out—354 design ideas. Send 30c for Catalog.