



HARVEST LETTUCE—Mexican farm workers (braceros) are shown above harvesting lettuce in California's Imperial Valley in this recent picture. (UPI)

# Imperial Valley Farmers Start Change to Field Crops

By JOHN POWER  
United Press International  
El Centro, Calif. — Imperial Valley grown iceberg lettuce, once the proud aristocrat of vegetable crops, has seen its last salad.  
The swan song of the lettuce and many other table crops that grew in abundance in the highly irrigated Imperial Valley of Southern California has been warbled by the House of Representatives in its decision not to extend the Mexican farm labor program into 1964.  
With the scheduled departure of the Mexican worker (bracero) from the scene later this year, valley farmers are already taking steps for the

smooth changeover from table to field crops.  
**Brought Across Border**  
Each year since World War II, thousands of Mexican workers have been brought across the international border to perform "stoop labor" in harvesting the many vegetable crops that thrived on the combination of an abundant supply of Colorado river water and the hot desert sun.  
It was a chore not relished by the majority of domestic farm workers.  
Can American farm labor fill the employment void created in the valley with the death of the bracero program?  
**Outspoken of Growers**  
Most growers here say "no." They say the end of Public Law 78 will cause complete change in crop production in the rich fertile area bounded by the Colorado river, Mexico and the Coast Range.  
Most outspoken of the growers is Ed Hayes, manager of the Imperial Valley Farmers Association.  
"This action will very seriously affect growers of tomatoes, melons, onions and other crops in the Imperial Valley," said Hayes.  
"I think we can foresee a drop in our lettuce acreage from the present 40,000 acres to nothing next season unless we can do something about the situation."  
Hayes was quick to point out that steps have been tak-

ing during the past few years to counteract any serious effects of the termination of the bracero program.  
He said in January of 1961, braceros working in the valley totaled 8,200. Last year the total was 5,200 and last January this number dwindled to 3,898.  
**Increase Other Crops**  
What will take the place of the valley's vegetable crop that had a cash value of over \$50 million last year?  
Hayes looks to an increase in field crops which can be harvested by machine. Among those crops slated for acreage increase are sugar beets. Over 51,000 acres were planted last year. Barley, cotton and flax also became more abundant.  
Of high priority is the development of the cattle feeding industry in the valley. Under this plan, cattle from as far away as Texas are shipped here to fatten in specially constructed pens until they reach their peak for market.  
Last year, over 600,000 head were shipped to the valley for this purpose.  
**NEW TEACHER**  
Talent—Mrs. Ruth Granby of Rt. 1, Box 275, Talent, will teach special education classes at Talent Junior High school this fall. She replaces Ed Harmon.

## Family Council

Editor's Note: The Family Council consists of a judge, a psychiatrist, three clergymen, a newspaper editor, a women's editor, and two writers. Each article is a summary of an actual case history. The Council reports on problems that have been dealt with by responsible agencies and counselors.  
(Copyright 1963—General Features Corp.)  
**Bernice F.** — My husband keeps piling work on me.  
**Matthew F.** — She just wants to sound like a heroine.

**Bernice F.** — We live in a rural community and I'm used to hard work. But there's a limit. My husband drinks, so I hold a part-time job to be sure of cash in the house. I also must tend the coal-fire and take care of Matt's 82-year-old mother. We have two sons, 19 and 17, who want to enlist, but Matt expects them to stay home to help me with chores. This isn't fair to them. His mother and he should pitch in.

**Matthew F.** — Help my wife plenty. I admit I go overboard with the bottle occasionally, but I make up for it by doing a heavy job around the house. The younger boy can sign up if he wants. His brother enjoys waiting on Grandma, helps with the coal-stove and in summers holds a post-office job. Between him and me, we hand over money to Bernice frequently, but she wants more. If I drink, she drives me to it.

**The Council:** This husband seems more adept at passing the buck than earning it. Running her home is like playing a game of musical chairs for Bernice, where she's the one left over when the music stops. She wants to stop the game and bring the other members of the household to their feet. . . We gather they're all in good health, even Grandma, so the first step in lightening Bernice's load would be the intervention of a family counselor to assign fixed household duties to each. This should end the easy assumption that it's quite all right for the others to rescue. Bernice will come to the rescue. The social worker will support her in defending her "rights" and ending the wrongs she endures. . . Next would come a job on Matthew. His shirking of his proper role as head-of-the-house, breadwinner, helpmate, knocks everyone else's role off-base. We agree that the boys should be released to make their own way instead of serving as flunkies to Grandma and Dad. All Bernice needs is a partner.

## Dwarf Fruit Tree Tour Planned at Corvallis July 15

Corvallis—Dwarf fruit trees—like compact cars—are attracting an enthusiastic following in search of convenience and lower operating costs.

Focal point of their enthusiasm is one of the largest experimental plantings in the United States located near Corvallis that will be open to a public tour, July 15, starting at 9:30 a.m.

The tour will continue through July 16 including stops at nurseries, commercial orchards, and test plantings in the Willamette valley and at Hood River.

The planting near Corvallis, also one of the oldest in this country, is at Oregon State university's Lewis Brown horticultural research farm and includes dwarf apple, pear and peach trees being tested by Dr. A. N. Roberts, OSU horticulturist and a national authority on dwarf fruit trees.

The research farm is one mile east of Corvallis on Highway 23 (Corvallis-Lebanon cutoff) then south one mile on Peoria rd.

**Sponsored by Association**  
Sponsored by the Northwest Dwarf Fruit Tree Association, the tour will show various types of plantings ranging from traditional orchard blocks to hedgerows. Visitors also can see how dwarfing is obtained by grafting stem pieces into the tree or through use of special rootstocks.

Varying effects of the Oct. 12 windstorm on types of dwarf trees also are apparent, according to R. L. Stebbins, OSU extension horticulture specialist and secretary of the association.

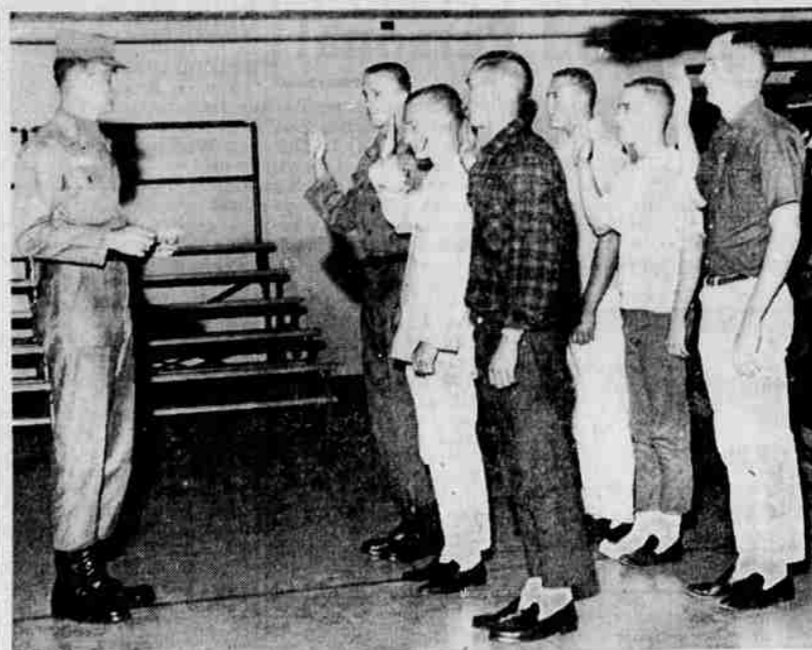
Other tour stops include: July 15, Noon lunch at the Country Kitchen, Corvallis; then to Knollview Nursery, south on McKee rd., off Highway 99E north and east of Salem; and Pat Johnston's orchard five miles northwest of Woodburn.

July 16, A morning tour of plantings at OSU's Mid-Columbia experiment station one mile southwest of Hood River off the Parkdale rd.; and an afternoon tour of dwarf tree plantings in the Hood River valley.

## Two Officers Receive Promotions in Reserve

Donald W. Johnson, Grants Pass, new commander of Company E and Robert D. Murphy, Central Point, new commander of Company F, have been promoted to captain, U.S. Army Reserve, according to Lt. Col. John F. Rush, commanding officer, Second battalion, 414th Regiment (BCT), Medford.

Captain Johnson, a soil conservationist, and Captain Murphy, teacher in the Central Point system, are graduates of Oregon State university.



NEW RECRUITS — Six young men were sworn into one of the local units of the National Guard in ceremonies here Monday evening for one of the larger groups in recent years. Administering the oath was Second Lt. Don E. Ferguson, executive officer.

New members in Battery A, Second Automatic Weapons Battalion, 249th Artillery are, left to right, front row, Paul Rutter, Ronald Tompkins, Richard Jennings, second row, Gary McGarity, Gerald Pitts, Butte Falls, and Ronald Brunette.

## Report of German Trip Planned by Dr. Leon Minear

Salem — Dr. Leon P. Minear, superintendent of public instruction in the state department of education, one of six state school officers in the nation selected to tour school systems of West Germany, will make a report to the state board of education in Salem Wednesday, July 17. The program was sponsored by the German government.

Revised sections of the Guide for Secondary Education in Oregon also will be considered by the state board at the July meeting.  
The proposed revisions have been made to update the health, homemaking, physical education and science sections of the secondary guide, the department of education reported. This change will constitute the last biennial revision of the guide. The next revision will be the major one designed for a four or six year production cycle.  
**Will Seek Approval**  
The Central Oregon Area Education District board will ask the state board of education to approve the lowest bid secured for the construction of community college buildings.

Several changes in state department staff personnel will be recommended to the state board. The board members will be asked to confirm appointments of Dr. William R. Murlin, as state medical consultant, and Martin Schuman, Richard F. Crawford and Fillmore Y. Sue as vocational rehabilitation counselors.  
The appointment of Dr. James B. Ellingson, currently education research director, to succeed Dr. John S. Conway, who recently resigned

## World War I Group Plans Two Meetings

World War I barracks and auxiliary will hold their monthly pot luck dinner at 7 p.m., July 17, in the Medford Girls Community club.

Sunday, July 21, District Seven of the World War I barracks will convene at Touvelle State park on Table Rock rd. The Medford barracks and auxiliary will be host for the meeting which will be followed by a potluck dinner at noon.

This will be the first meeting with the new district officers presiding, an officer said.

## Increases Noted In Bank Deposits

Three Jackson county branches of the First National Bank of Oregon reported gains in deposits and loans for the mid-year with the Phoenix branch noting a sizeable increase in loans.  
The Medford branch reported mid-year deposits of \$29,534,551, compared to \$28,333,859 a year ago, and loans outstanding of \$16,887,423, compared to \$21,408,084.

Central Point branch noted \$3,338,483 in deposits, compared to \$3,254,807. Loans totalled \$4,124,245, compared to \$3,661,393.

The Phoenix branch reported \$1,292,840 in deposits, compared to \$1,059,406, and loans of \$1,325,572 compared to \$838,145 a year ago.

The First National Bank of Oregon registered record high deposits and loans at mid-year, according to President Ralph J. Voss. Deposits of \$962,633,676 were reported on June 29, compared to \$921,320,103 a year ago, an increase of \$87,658,683.

Loans outstanding among the banking system's 92 offices totalled \$588,144,243, for a gain of \$57,866,229 over the June, 1962 figure. Resources continued to top the \$1 billion mark.

## Speaker Listed for Assembly in Eugene

Eugene — Sir Richard Hugh Sedley Allen, a retired member of the British foreign service, will be one of the principal speakers during a Pacific Northwest Assembly Aug. 1 through 4 at the University of Oregon.

The Assembly, which will be attended by opinion leaders from five western states, will probe the problems of "Cultural Affairs and Foreign Relations." The meeting will be co-sponsored by the University of Oregon and the American Assembly at Columbia university.

**JAM & JELLY SERVICE**

GLEAMING SILVER-PLATE

**\$4.99** Heavy silver-plated Jam and Jelly service. Handmade designed with Easy-to-Carry handle. 2 glass containers.

**JUST 1 plus tax**

Charge it! Open Friday Nights

**ZALES JEWELERS**

218 E. Main 779-1331

## NEW!... at Mann's

Lay-away now for Back-To-School . . .

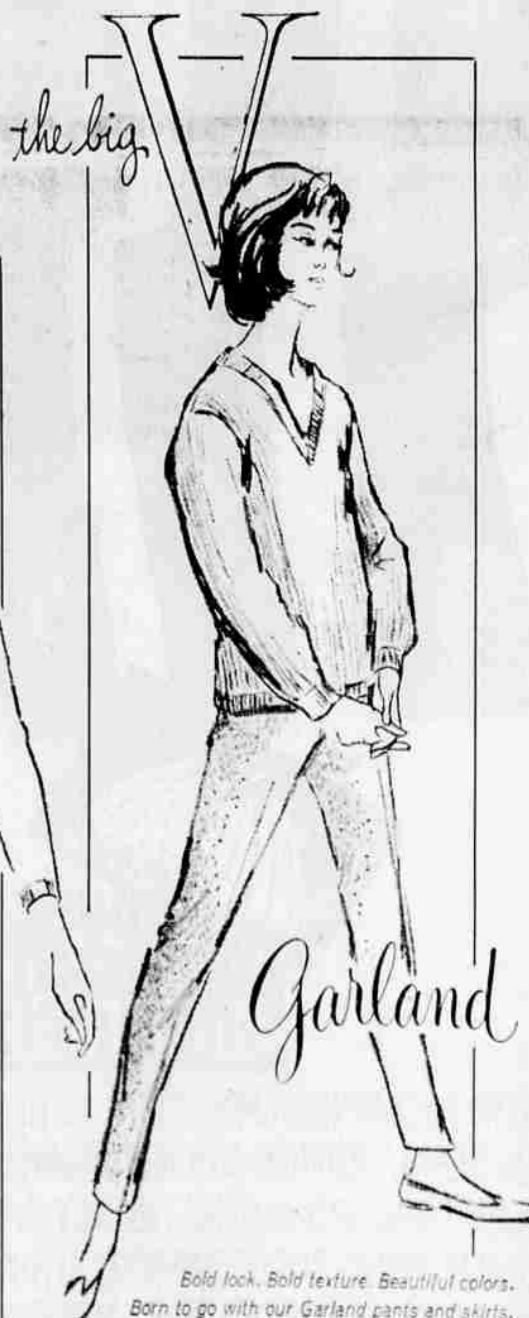


DOUBLE DREAMSPUN . . .

only Garland makes it. Creamy knit, dreamy colors, with dainty white edging and jewel neck to dress it (and you) up. Of course it goes beautifully with all of our Garland classic skirts.

SWEATER 13.98

SKIRT 8.98



Garland

Bold look. Bold texture. Beautiful colors. Born to go with our Garland pants and skirts.

SWEATER 8.98

## Helena Rubinstein Once-a-Year Beauty Sale

**HAVE BEAUTIFUL LIPS AND FINGERTIPS!**  
Buy: Fashion Stick. Lipstick and lip liner in one. In reds, corals, pinks. Free: New Nail Fashion. Chip resistant nail enamel in matching shades. 2.00 value **now 1.50**

**CLEANS, LUBRICATE, REFRESH!**  
Buy: "Pasturized" Face Cream Special. Lubricating cream and cleanser! Free: "Herbal" Skin Lotion. Cooling freshener. Removes traces of cream. 2.38 value **now 1.75**

**BEAUTY TREAT...DEEP DOWN!**  
Buy: Deep Cleanser. Contains Penetrel. Creams deep as it cleans deep! Free: Skin Dew Moisturizer. Invisible all-day beauty treatment for dry skin. 3.00 value **now 1.50**

**GLORIFY YOUR HAIR!**  
Buy: 2-Speed Home Permanent. Named finest by consumer survey. Pincurl or neutralizer permanent. Free: Headliner. Hair groom. 2.63 value **now 2.00**

**BUY ONE...GET A BEAUTY BONUS FREE! SAVE UP TO 50%**

**CREAM AWAY FACIAL HAIR!**  
Buy: NUDIT for the Face with Super-Finish Cream. Swift facial depilatory. Free: Skin Dew Moisturizer. Invisible all-day beauty treatment for dry skin. 3.00 value **now 1.50**

**BE NICE-TO-BE-NEAR ALL DAY!**  
Buy: Roll-Dry. Effective deodorant anti-perspirant in a roll-on formula. Free: Heaven Sent Bath Powder. Delightfully fragrant. Shaker box. 1.60 value **now 1.10**

**WASH AWAY BLACKHEADS!**  
Buy: Beauty Washing Grains. Foaming granules clean clogged pores! Free: "Water Lily" Pore Lotion. Medical lotion tones, refines skin! 2.88 value **now 2.00**

**GET FAST HELP FOR ACNE BREAKOUTS!**  
Buy: Bio-Clear Medicated Cream. Free: "Water Lily" Pore Lotion. 2.63 value **now 1.75**

**WALK IN AN AURA OF HEAVENLY FRAGRANCE!**  
Buy: Heaven Sent Eau de Parfum. Free: Heaven Sent Bath Powder. 2.50 value **now 2.00**

**JUST 9 OF 30 EXCITING COMBINATIONS!**

\*tm prices plus tax limited time only

**Mann's MEDFORD**

**Mann's MEDFORD**

14 N. CENTRAL — 215 E. MAIN