

Dedication of Howard Prairie Lake, Recreation Area Scheduled

Howard Prairie lake, one of Oregon's newest and most popular recreation areas, will be formally dedicated Saturday, June 29.

Dedication ceremonies will commence at 1 p.m. with introductory remarks by Earl M. Miller, Jackson county judge, and Larry Espey, chairman of the Jackson county recreation commission and president of the Oregon County Park association.

Glenn L. Jackson, chair-

man, Oregon state highway commission, will act as master of ceremonies.

Also planning to attend are William I. Palmer, assistant commissioner, U. S. bureau of reclamation, Washington, D.C.; M. Boyd Austin, assistant regional director, and Thoralf Torkelson, chief, lands branch, U.S. bureau of reclamation, region 1, Boise, Idaho.

Representatives from other agencies will include Mark

Pike and Ed Arnold, U.S. bureau of outdoor recreation, Curt Nesheim, Oregon state forestry department, and Harold Schick and Dave Taibot, state recreation division.

Representatives from the state game commission, state marine board, state park advisory committee, U. S. National Park service, U.S. forest service, bureau of land management; Douglas, Josephine, Klamath and Siskiyou counties and private organi-

zations will also participate in the event.

Unveiling of Plaque

The unveiling of the dedication plaque will be done by Assistant Commissioner Palmer, Judge Miller and Homer Moore, long-time member of the board of directors, Talent Irrigation district.

This will be followed by an old-fashioned family style picnic in the Howard Prairie Recreation area.

The land the lake now cov-

ers was originally composed of two prairies known as Grizzly Prairie toward the north and Howard Prairie toward the south. The prairies were homesteaded in the 1880's and for many years served as pastures for horses and cattle and for harvesting native grasses which grew there.

The farm at the northeast corner of the lake was also the post office for the area known as "Lily Glen," which is now the name of the riding stables located at the same site.

33 Miles From Ashland

Howard Prairie Reservoir project is located approximately 33 miles east of Ashland and is a part of the Talent Irrigation project; was undertaken by the U.S. bureau of reclamation to provide water for many purposes.

The primary purpose being for irrigation in the Talent irrigation area, which contains 14,000 acres of agricultural land in the Rogue valley. Other benefits include power development, recreation and wildlife preservation.

The Howard Prairie project was started in May, 1958, and completed in the fall of 1959. The dam, which crosses Grizzly creek, is a compacted earth and rock-fill type, 105 feet high and 990 feet long at the crest. It backs up a lake of 60,000 acre feet of water and is 5 1/2 miles long and one mile wide. The elevation when the reservoir is full is 4,526 feet above sea level.

Recreation Area

The recreation area encompasses 1,904 acres of land which surrounds 2,000 acres of reservoir surface making a total of 3,904 acres. The initial recreational development was constructed by the bureau of reclamation under the direction of the National Park service and amounted to an expenditure of \$126,225.00.

On Dec. 30, 1958, the United States entered into a 50-year lease agreement with Jackson county for administration of the area for recreational purposes.

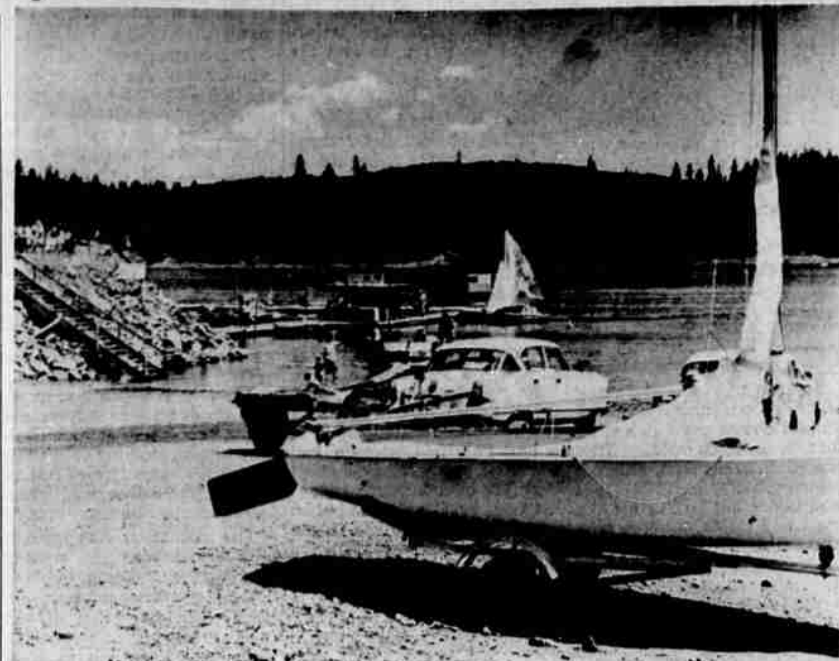
Since then, Jackson county has expanded the facilities many times including the installation of a marina and boat launching facilities, a concession building and many new picnic and camp sites to accommodate the rapidly increasing number of recreationists using the area.

Plan Expansion

during the 1961 season revealed that there were over 213,000 visitor days during the season.

Cole Rivers, fishery biologist, made spot checks during the season and estimated that over 600,000 fish were caught in the reservoir in 1961.

Present indications are that both records are in danger of being surpassed this year.



HOWARD PRAIRIE LAKE—Boats—sail, row, and motor—have been evident at Howard Prairie lake this spring as hot weather arrived in the valley. The lake, at its maximum depth, has been a popular recreation spot this year. Among the activities available in the Howard Prairie recreation area are horses for riding at the Lily Glenn ranch which recently was opened by the Clyde Wilhelms at the upper end of the lake. Picnicking and overnight camping facilities also are available at the lake. (Hooker-Johnston photo)



DEDICATION PLANNED—Howard Prairie recreation area will be dedicated Saturday, June 29. The public is invited to inspect the facilities at the lake which include the new concession building. Plans for the dedication were announced recently by the Jackson county parks and recreation commission. Neil Ledward, department director, explained that arrangements for parking to accommodate the anticipated crowd are being worked out. (Hooker-Johnston photo)

recreation commission. Neil Ledward, department director, explained that arrangements for parking to accommodate the anticipated crowd are being worked out. (Hooker-Johnston photo)

Completion of Timber Sale Program Noted in Area Forest

The advertising of the lower Copeland Blowdown Timber sale in the Union Creek Ranger district last week marked the completion of the Rogue River National forest timber sale program for the fiscal year ending June 30.

Six sales are now advertised for sale in the week of June 24-28 to complete the program.

The total volume that will have been sold is 234,865,000 board feet, enough to manufacture lumber for construction of about 34,000 average-sized homes. The sold volume is the second highest in history for the Rogue River forest.

In 1960, 280,314,000 board feet of timber was sold, but this included the Klamath Ranger district program which is now part of the Willamette National forest. The announced program for the current fiscal year was 218,200,000. The forest exceeded this goal by 16,665,000 board feet or about 7 1/2 per cent.

Included in Program

Included in the sales program was 103,093,000 board feet of blowdown timber in 53 tracts, the forest service noted.

Resulting from the Oct. 12 windstorm, the timber was included in the annual program in order to prevent deterioration of the down timber, beetle infection of surrounding standing timber, and loss of grade from blue-staining of the pines.

Inclusion of this timber required complete alteration of the Union Creek and Prospect Ranger district sales programs after most of the preparatory work for the regular sales had been done. Only by considerable extra effort by the foresters and technicians on the two districts was this program accomplished.

Forest Supervisor C. E. Brown noted. The other districts on the forest did their part by furnishing extra men to help as needed.

Logging of the blowdown timber has been accelerated to the extent that new records for logs scaled at the Prospect log scaling station have been established, Brown noted.

Two hundred seventy-two truckloads of logs were scaled, that is, the net board feet contents were measured on the record day, compared to a previous high in former years of 173 loads. The average daily output now is about 250 truckloads or more than 1,000,000 board feet per day.

Cooperation of Industry

The cooperation of the lumber industry in accelerating logging of blowdown by deferring logging of green standing timber will materially reduce losses from deterioration and beetle epidemics.

Although bark beetles have already attacked many of the down trees, the beetles and their broods will be removed with the logs, and drowned in the log ponds before they have a chance to emerge to infest surrounding green timber, forest service personnel said.

The scattered blowdown in the inaccessible areas away from existing roads, and the debris left from logging the blowdown, will be the greatest threat to the forest.

Beetle broods could build up in the isolated blowdown to cause local epidemics, and the dry logging debris will be an extreme fire hazard until it is isolated and disposed of, Brown said.

The public has been asked to use extreme caution in all wooded areas to rule out the possibility of man-caused fires under the hazardous conditions caused by the slash.

Bark Beetle Threat

The bark beetle threat in the isolated areas is being examined by a crew of two forestry technicians who are cruising the back country in strips one-quarter mile apart recording and mapping blowdown. Two areas of concern.

No more timber may be cut than is grown and the present Rogue River National forest annual allowable cut of 176.4 million board feet could be cut each year without ever endangering the reserve of timber.

However, conditions change and the forest will be re-examined in detail each 10 years to detect changes and adjust the cut figures.

In the event that extreme overcutting results from the sale of blowdown, future compensating adjustments may have to be made in the timber sale program, but this is unlikely since deferral of cutting in green timber will probably make the program a self-compensating, Brown added.

ated blowdown have been discovered this way and will be sold this summer.

Flights to look for beetle activity have been scheduled throughout the summer so preventive measures can be taken based on early detection, Brown said.

Although the cutting of timber will be accelerated this year, the calculated annual allowable cut governs the amount of timber that may be cut on any national forest. The cut is calculated using volume and growth data collected by sampling all the timber stands on the forest, Brown said.

No more timber may be cut than is grown and the present Rogue River National forest annual allowable cut of 176.4 million board feet could be cut each year without ever endangering the reserve of timber.

However, conditions change and the forest will be re-examined in detail each 10 years to detect changes and adjust the cut figures.

In the event that extreme overcutting results from the sale of blowdown, future compensating adjustments may have to be made in the timber sale program, but this is unlikely since deferral of cutting in green timber will probably make the program a self-compensating, Brown added.

Four Flights Are Made by Ambulance

Two Gold Beach men were returned home from Rogue Valley hospital Thursday, Mercy Flights service reported Friday.

Richard Larson was returned after having a back fusion and Fred Burgess was returned after suffering injuries in an accident last week.

Orville Strahm, 16, also of Gold Beach, was taken to Rogue Valley hospital by Mercy Flights after being involved in an accident and a fourth man, who was not named was also flown as a patient the same day.

On Dec. 30, 1958, the United States entered into a 50-year lease agreement with Jackson county for administration of the area for recreational purposes.

Since then, Jackson county has expanded the facilities many times including the installation of a marina and boat launching facilities, a concession building and many new picnic and camp sites to accommodate the rapidly increasing number of recreationists using the area.

Plan Expansion

during the 1961 season revealed that there were over 213,000 visitor days during the season.

Cole Rivers, fishery biologist, made spot checks during the season and estimated that over 600,000 fish were caught in the reservoir in 1961.

Present indications are that both records are in danger of being surpassed this year.

Drivers Asked to Support Precautions

Chief of Police Charles Champlin has urged local drivers to participate in the Oregon Safety Shield program this summer by practicing "common sense" safety precautions and supporting police and court action against errant drivers.

Chief Champlin said the Shield will be used to remind the public of the necessity for obeying traffic laws and driving defensively during the heavy summer travel months.

Slogan for the program is "Shield yourself from traffic trouble."

Need for such a public education program, Champlin said, is emphasized in the traffic toll recorded last summer when 145 deaths occurred during June, July and August. August was the worst single month in the history of the state with 69 of those deaths reported.

Chief Champlin has urged local drivers to participate in the Oregon Safety Shield program this summer by practicing "common sense" safety precautions and supporting police and court action against errant drivers.

Chief Champlin said the Shield will be used to remind the public of the necessity for obeying traffic laws and driving defensively during the heavy summer travel months.

Slogan for the program is "Shield yourself from traffic trouble."

Need for such a public education program, Champlin said, is emphasized in the traffic toll recorded last summer when 145 deaths occurred during June, July and August. August was the worst single month in the history of the state with 69 of those deaths reported.

SALE SWIMMING POOLS

All Popular Sizes and Depths above ground or in ground

MODEL POOL

OPEN 7 DAYS A WEEK, EVENINGS, TOO

Bring Your Bathing Suit EXCELLENT FINANCING AVAILABLE

DORAN TAYLOR Contractor

517 NE Dean Drive—Grants Pass PHONE 476-6535

Directions: Take second exit to Grants Pass. Come to third stoplight, turn left onto NE A Street. Go three blocks and turn right onto Dean Drive.

MORE PEOPLE HAVE BOUGHT PIPERS THAN ANY OTHER PLANE IN THE WORLD

PIPER AZTEC

The Big One on the Best Seller List!

PIPER CHEROKEE

The fastest of the four-place "Economy Four". The only one rated at 150 MPH.

FLY THE PLANE THAT PILOTS PREFER . . . Look at the Rest . . . But Fly the Best!

Look for the PIPER in the yellow pages of your phone book.

CHARTER AND STUDENT INSTRUCTION

AVIATION SERVICE

Across From Mercy Flights

PIPER SALES AND SERVICE Phone 772-2938

Great Summer Sale

GAS RANGES

NO DOWN PAYMENT JUST USE THE \$50 CERTIFICATE

MONTHLY PAYMENTS LESS THAN \$10 ON YOUR CPU GAS BILL

REGULARLY \$249.50 GREAT SUMMER SALE SPECIAL (with \$50 Certificate) **\$199.50**

FREE NORMAL INSTALLATION

CHOICE OF 2 NEW MODELS

O'Keefe & Merritt

MODEL 7125 with HOLD-O-MATIC OVEN

The 20" oven that holds dinner most, hot and delicious until you're ready to eat. PLUS built-in aluminum grille, divided cooking top, stainless broiler, star jet burner, decorative designed panel. Big 36" white with chrome top. Beautiful!

MODEL 7118 with PANOMATIC BURNER

Eliminate worry of burning, overcooking or boil over... that's the "Burner" with a Brain! PLUS long size oven, one-piece 36" lift top for easy cleaning, stainless broiler, decorative designed panel. Striking Copertone color.

CALIFORNIA-PACIFIC UTILITIES COMPANY

YOUR PARTNER IN WESTERN PROGRESS

Phone 772-5281, Medford • 482-2116, Ashland

PAY STATIONS

GAS BILLS

May Now Be Paid

—at—

J. J. NEWBERRY CO.

Shopping Center

—and—

VILLAGE VARIETY & GARDEN SHOP

771 Stewart Ave.

CALIFORNIA-PACIFIC UTILITIES COMPANY

YOUR PARTNER IN WESTERN PROGRESS

SCHOOL'S OUT...CHILDREN PLAYING...DRIVE CAREFULLY...

The boys and girls in Medford and the Rogue River Valley are out of school now to enjoy a summer of fun. PLEASE help them to keep enjoying it! Youngsters will still be going to school playgrounds and playing at home . . . they are apt to dash into the street anytime . . . into the path of YOUR car. The Medford Traffic Safety Council urges YOU to make SAFE DRIVING a very personal responsibility. Have your car thoroughly checked for safety . . . be doubly careful to observe traffic signs and regulations . . . watch out for children everywhere — and give them the right of way!

DRIVE WITH EXTRA CARE

Published in cooperation with the Medford Safety Council by the Mail Tribune

Be Choosy . . . Get Jacuzzi PUMPS!

1/2 H.P. DEEP WELL PUMP With 42 Gal. Tank and Air Charger \$15.95 down, \$13.15 per mo.

Centrifugal Irrigation Pumps \$29.50 and up

Siskiyou Hardware

225 W. Main Ph. 772-2939

• S&H GREEN STAMPS •