

# Bitter Legislative Battle Predicted Over Civil Rights

Washington—(UPI)—President Kennedy's tough new civil rights program touched off in Congress today what promised to be one of the bitterest legislative battles in decades.

Not even the staunchest backers of the President's many-pronged approach to the boiling race crisis believed Congress would buy it anywhere near intact.

At first glance, some of the proposals he sent the House and Senate Wednesday appeared likely to be passed after only perfunctory politeness.

## Goldwater Backers Open State Office

Portland—(UPI)—Backers of Sen. Barry Goldwater of Arizona for the 1964 Republican presidential nomination opened a state headquarters here Wednesday.

State chairman is Everett Rake of Lake Oswego, a lumber company executive. He said the organization was affiliated with the National Draft Goldwater for President committee.

Backers said their goal was to enter Goldwater's name in the Oregon primary next May 15 and to send a delegation to the national convention pledged to him.

Headquarters are in the Congress hotel.

## Local Man Receives Prison Sentence

Ronald Raymond Barron, 21, of 1240 North Riverside ave., Medford, yesterday in Jackson county circuit court was sentenced to three years in the Oregon State penitentiary.

Oral notice was given he intended to appeal the sentence. He was charged with entering a motor vehicle with intent to steal.

Barron had pleaded guilty to the charge.

## Foreign Briefs

### CHINESE MERCY PLANE SHOT DOWN

Taipei, Formosa—(UPI)—The Nationalist Chinese air force said today that the Communist Chinese shot down a Nationalist "mercy plane" over the mainland last night.

### FOUR KILLED IN JAVA RIOTS

Jakarta, Indonesia—(UPI)—Anti-Chinese riots in West Java early in May destroyed an estimated \$13 million worth of property, according to official estimates published here today. A national police spokesman said four persons were killed and 32 injured.

### TURKS EXTEND MARTIAL LAW

Ankara, Turkey—(UPI)—The Turkish Parliament yesterday approved a two-month extension of martial law in the cities of Istanbul, Ankara and Izmir.

The martial law was invoked after the futile May 21 revolt against Premier Ismet Inonu's government in those cities. More than 1,000 persons are on trial on charges arising from the rebellion.

### GROUP TO PICKET MACMILLAN HOME

London—(UPI)—A regional branch of the ban-the-bomb committee of 100 announced today it will picket Prime Minister Harold Macmillan's country home throughout President Kennedy's stay there June 29-30.

Others, including some of the key items, looked as if they would be chewed to pieces.

As Congress dug in for the legislative battle, the House announced that the President had invited 30 Negro and white "civil rights leaders" to meet with him Saturday. Included were the Rev. Martin Luther King Jr. and Roy Wilkins, head of the National Association for Advancement of Colored People (NAACP).

The Saturday session was seen as an effort by Kennedy to urge moderation on integration leaders while Congress considers his legislation. In his message Wednesday the President urged the Negro community to halt demonstrations that lead to violence.

Kennedy conferred at the White House Wednesday with 230 leading educators. He asked them to set up a committee that would work at the grass roots level to provide better schooling without racial barriers. Participants said there seemed to be general agreement to his request.

### Produces Strong Reaction

In Congress the initial reaction to the President's proposals was predictably strong. Southerners and some conservatives accused the President of giving in to mob rule and pledged to fight his program with every means at their disposal.

### Burgess Retires From Forest Service

Portland—Thomas H. (Bud) Burgess, assistant regional forester, U.S. forest service, has retired from the department after more than 40 years of service.

Succeeding Burgess was Edward H. Marshall. He took office earlier this month.

Burgess has been in the regional office in Portland since 1939, and since 1946 has been chief of the division of state and private forestry. He also was assistant supervisor of the Umpqua National forest from 1930 to 1934.

Another more familiar civil rights measure with a dim future was a Fair Employment Practices commission (FEPC). A House labor subcommittee Wednesday approved such a bill, designed to outlaw job discrimination in private business.

Another key section of the big bill—actually requested earlier this year—would continue the six-year process of trying to assure Negro voting rights. This would be done through controls on the use of literacy tests and expediting court tests of voting suits. This was too tough to get through last session, but its difficulties now pale in

comparison to the public accommodations and FEPC proposals.

A second entirely new proposal would give government officials the option of either paying or withholding federal aid to states which practice racial discrimination in carrying out federally assisted welfare, education and other programs.

Other provisions of the main bill would set up a "community relations service" to seek peaceful solutions to racial disputes, extend the life of the Civil Rights commission for four years beyond Sept. 30, give permanent status to the Equal Employment Opportunities commission to fight discrimination in federal agencies and by government contractors, and provide "technical assistance" to school districts which need

help in desegregating classrooms.

All of these requests are controversial and the President can get none of them without a fight. But with the battle joined on such a broad front, it appeared likely he would win on some.

The House Judiciary committee was expected to start hearings on the main bill next week. Chairman Emanuel Celler (D-N.Y.) was expected to produce a bill, hopefully with bipartisan backing, by late July.

Other provisions of the main bill would set up a "community relations service" to seek peaceful solutions to racial disputes, extend the life of the Civil Rights commission for four years beyond Sept. 30, give permanent status to the Equal Employment Opportunities commission to fight discrimination in federal agencies and by government contractors, and provide "technical assistance" to school districts which need

Regional Edition Page 2A

## MEDFORD TRIBUNE

MEDFORD, OREGON, THURSDAY, JUNE 20, 1963

## Stocks Fail To Pull Out of Lethargy; Trading Is Quiet

New York—(UPI)—Stocks failed to pull out of their lethargy early today, moving narrowly mixed in quiet trading.

Union Carbide tumbled more than 2 in a mixed chemical group and Chrysler slipped close to a point in a soft auto group. Steels were narrow and mixed.

Alcoa and U.S. Smelting improved among the metal shares and Great Western Sugar tacked on close to a point in its group. Armour and Jewel Tea slipped about a point apiece in the foods.

### DOW JONES AVERAGES

New York—(UPI)—Dow Jones final stock averages: 30 industrials 719.84, up 0.94; 20 railroads 171.25, up 0.87; 15 utilities 139.78, off 0.22; 65 stocks 257.15, up 0.35. Sales Wednesday were about 3.97 million shares, compared with 3.91 million shares Tuesday.



### RECEIVES ORDERS - Senior M/Sgt. Hal O'Leary, local U.S. Air Force recruiting service representative, received orders this week reassigning him to recruiting group headquarters in Sacramento, Calif., for duty in advertising and publicity for the Air Force. The sergeant, who has lived in the Rogue Valley for 30 years, will be accompanied by his wife Bonnie, and their two children, Roslyn and Dennis. While on recruiting duty in southern Oregon, he has been the top recruiter on the West Coast twice within a 12-month period, the airman of the year for the seven western states, and one of 10 outstanding recruiters in the nation to have been promoted recently to one of the new super-sergeant grades.

Denver Man at Medford Meeting

The \$12 billion business of advertising is threatened by increasing governmental regulations and interference, Lee Fondren, Denver, Colo., radio executive said in an address here Wednesday noon.

Speaking before the newly organized Southern Oregon Advertising club at the Colony restaurant, Fondren warned that the industry which can sell almost 7 million new automobiles in a single year is facing increasing restrictions because the people of the U.S. are accepting the "big brother" thinking in federal and state government.

Federal subsidies to states which prohibit outdoor posters along certain highways, and vicious and all-embracing bits of legislation passed to cripple the entire industry, such as the Baltimore city tax on all advertising, were cited by the speaker.

The economic impact of governmental interference, if successful, would be tremendous, according to Gronden. For each dollar spent in advertising, the government realizes \$7 in taxes on the sale of the products advertised by that dollar.

Lee Fondren, a former president of the Advertising Association of the West and manager of station KLLZ in Denver, stressed the fact that those engaged in the business of advertising should tell the truth about their profession, tell what its function is in our society and why the whole country will suffer from the present wave of restrictive legislation against legitimate advertising.

Officers for the newly formed advertising club here will be selected at the next meeting of the group.

Wednesday's prices on selected stocks:

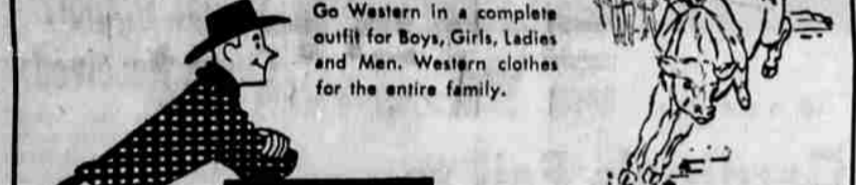
|                          |         |
|--------------------------|---------|
| Allied Chemical          | 50 1/2  |
| Alum Co Am               | 67      |
| American Air Lines       | 25 1/2  |
| American Can             | 45 1/2  |
| American Motors          | 19      |
| A T & T                  | 122 1/2 |
| American Tobacco         | 20 1/2  |
| Anaconda Copper          | 50 1/2  |
| Arco                     | 55 1/2  |
| Bentley Corp             | 31 1/2  |
| Bethlehem Steel          | 35 1/2  |
| Boeing Air               | 102 1/2 |
| Case                     | 19 1/2  |
| Caterpillar Corp         | 43      |
| Caterpillar Corp         | 44      |
| Chrysler                 | 65 1/2  |
| Coca Cola                | 24      |
| CBS                      | 39      |
| Columbia Gas             | 47 1/2  |
| Continental Can          | 42 1/2  |
| Crown Zellerbach         | 21 1/2  |
| Crucible Steel           | 20 1/2  |
| Curtis Wright            | 22 1/2  |
| Dow Chemical             | 61 1/2  |
| Du Pont                  | 23 1/2  |
| Eastman Kodak            | 109 1/2 |
| Firestone                | 34 1/2  |
| Ford                     | 33 1/2  |
| General Electric         | 80 1/2  |
| General Foods            | 70 1/2  |
| General Portland Cement  | 20 1/2  |
| Greyhound                | 40 1/2  |
| Gulf Oil                 | 44 1/2  |
| Homestake                | 47 1/2  |
| Idaho Power              | 34 1/2  |
| IBM                      | 437 1/2 |
| Int. Paper               | 90 1/2  |
| Johns Manville           | 74 1/2  |
| Kennecott Copper         | 92 1/2  |
| Kimberly Clark           | 37 1/2  |
| Montana Power            | 39 1/2  |
| Montgomery Ward          | 39 1/2  |
| National Biscuit         | 20 1/2  |
| New York Central         | 22      |
| Northern Natural Gas     | 52 1/2  |
| Northern Pacific         | 57 1/2  |
| Pac Gen Elec             | 31 1/2  |
| Penn J. C.               | 44 1/2  |
| Penn State               | 18 1/2  |
| Permanente Cement        | 15 1/2  |
| Procter & Gamble         | 71 1/2  |
| Radiant Corporation      | 44 1/2  |
| Richfield Oil            | 38      |
| Safeway                  | 90 1/2  |
| Shell Oil                | 43 1/2  |
| Socooy Mobil Oil         | 67 1/2  |
| Southern Co.             | 52 1/2  |
| Southern Pacific         | 35 1/2  |
| Sperry Rand              | 15 1/2  |
| Standard California      | 63 1/2  |
| Standard Indiana         | 60 1/2  |
| Standard N. J.           | 67      |
| Sun Mines                | 11 1/2  |
| Texas Gulf Sulfur        | 13 1/2  |
| Texas Pacific Land Trust | 22 1/2  |
| Thiokol                  | 24 1/2  |
| Trans America            | 41 1/2  |
| Trans World Air          | 18 1/2  |
| Union Carbide            | 107     |
| Union Pacific            | 41 1/2  |
| United Aircraft          | 42 1/2  |
| United Air Lines         | 42 1/2  |
| U. S. Plywood            | 37 1/2  |
| U. S. Rubber             | 45 1/2  |
| U. S. Steel              | 49 1/2  |
| Washhouse                | 37 1/2  |
| Youngtown                | 28 1/2  |

to please any cat... all tuna liver 'n meat chicken fish meaty mix kidney 'n meat



6 Dr. Ross CAT FOODS

IT'S RODEO TIME AT DREWS... Go Western in a complete outfit for Boys, Girls, Ladies and Men. Western clothes for the entire family.



LEVI'S Be sure to visit our Wrangler Levi section. They all add up to tremendous selections for men, women and boys. We can fit the men in Levi's clear to size 50. Available for the Western Lady Ladies Levi's 3.98 to 5.98 Both Regular and Wrangler STRETCH BLOUSES by Levi & Hi-Bar-C from 3.95

WESTERN HATS In year around felts and summer straws for men, boys and ladies. Shown here is the popular Rodeo Styling—"Quadrille" by Reistol at 17.50

SUMMER STRAWS by Bailey's U-ROLL-IT for all members of the family Priced from 2.95 to 6.95

ACME BOOTS Any member of the family can enjoy these famous boots—for example the "Roughout" is available in Boys' sizes at from 9.95 to 12.95 Men's at 22.95 Men's "Sunburst" 19.95 Boys' "Sunburst" 9.95

OPEN A 30-DAY CHARGE ACCOUNT OR USE OUR NEW REVOLVING CHARGE PLAN Set Your Own Monthly Payment! Example

|                         |      |      |      |      |       |       |       |
|-------------------------|------|------|------|------|-------|-------|-------|
| For A Shopping Month of | \$30 | \$40 | \$50 | \$75 | \$100 | \$120 | \$150 |
| You Pay Each Month      | \$8  | \$10 | \$12 | \$15 | \$20  | \$24  | \$30  |

Offering you nationally known lines of men's wear at consistently sensible prices. OPEN MONDAYS AND FRIDAYS TILL 9 P.M.

DREWS Manstore IN THE MEDFORD SHOPPING CENTER

SHIP IT LASME to or from Oakland, San Francisco, Los Angeles and other California points. Call Jack Fitzgerald 773-7761

MODERN PEOPLE know it's best for the waistline! Arden 2% BUTTERFAT SKIM MILK

# FABER'S SUPER MARKET

LIMIT RIGHTS RESERVED - FREE DELIVERY

## Super Savings on food

|   |  |
|---|--|
| <p>PEPSI COLA<br/>6 Pac 12 oz. Btl. Plus Deposit<br/><b>39¢</b></p>               | <p>Fluhrer's or Beck's<br/>Hamburger or Weiner Buns<br/>8 PACK <b>3 for \$1.00</b></p> |
| <p>PANCAKE MIX<br/>7 lbs. <b>95¢</b></p>  | <p>Fresh Whole Dills<br/>Del Monte—26-oz. <b>39¢</b></p>                               |
| <p>LOW CALORIE DESSERT<br/>Jorgensens 1/2 Gallon <b>59¢</b></p>                   | <p>SNOWDRIFT SHORTENING<br/>3 LBS <b>59¢</b></p>                                       |
| <p>GRAHAM CRACKERS<br/>Sunshine 2 Lb. Box <b>59¢</b></p>                          | <p>CAKE MIX Betty Crocker 3 for <b>89¢</b></p>   |
| <p>PEACHES<br/>19¢ lb.</p>  | <p>CREAM PIES Bradley <b>39¢</b></p>   |
| <p>WATERMELON<br/>5¢ LB.</p>  | <p>PREM Swift's 12 oz. <b>39¢</b></p>  |
| <p>NEBERGALL'S BONELESS FULLY COOKED<br/>HAM <b>89¢ lb</b></p>                    | <p>POTATOES<br/>New White—No. 1 10 lbs. <b>39¢</b></p>                                 |
| <p>BACON<br/>Swift's Sliced Orail Thick 2 lbs. <b>98¢</b></p>                     | <p>LEMONS<br/>3 doz. <b>\$1.00</b></p>   |
| <p>COTTAGE CHEESE<br/>Oregon Brand Made In Central Point <b>29¢ pint</b></p>      | <p>CHEESE<br/>Rogue Gold 2 lbs. <b>\$1.19</b></p>                                      |
| <p>LOCKERS • CUSTOM CUTTING • WRAPPING<br/>QUICK FREEZING • CURING</p>            | <p>SAUSAGE<br/>Swift's Brookfield Link lb. <b>39¢</b></p>                              |
| <p>350 East Pine St. - Phone 664-2733 - "A Good Place To Trade" Central Point</p> | <p>CINNAMON ROLLS<br/>Betty Crocker <b>4 FOR \$1.00</b></p>                            |