

10 Hospitalized As Pipes Explode

Fort Walton Beach, Fla. — Ten persons were hospitalized and 26 others received minor injuries Sunday night when several hot water pipes in a crowded restaurant exploded.

A hospital spokesman said one of the injured, Mrs. Wade Hopkins, was in critical condition suffering from nine broken ribs and a crushed shoulder bone.

Police said the explosion ripped a gaping hole in the wall of the Bradford House restaurant and spewed hot water and debris on the 100 customers in the main dining room.

The explosion also blew the plate glass windows out the front of the restaurant and tore a large hole in the roof.

The pipes were sealed in a wall between the restaurant office and the dining room. Police said the pipes were connected to a large boiler outside the recently completed building.

Three Found Dead At Sweet Home

Sweet Home — A 75-year-old man and his wife and son were found shot to death in their home near here early Sunday.

State Police said Earl Cawley apparently shot his wife, Helen, and son, Michael, 21, as they slept and then took his own life after going to a neighbor's house to call police.

His body was found by police near the back porch of his home. All three persons were shot with a rifle.

Police said Cawley left a note asking "forgiveness for this act."

Willie Brandt Sees Quiet in West Berlin

New York — West Berlin Mayor Willie Brandt, arriving in the U.S. for a short visit, said Sunday the Soviet Union has "come to accept the fact the West will remain in Berlin."

"The Russian leaders want to quiet things down," he said, "they have problems with their satellites in East Germany."

The Legislature — IV

Cuts in Faculty Draw Criticism Of Chancellor

(Continued from Page 1)
Chancellor R. E. Lieuallen spoke more softly. He said the system "fared well in some areas and suffered setbacks in others."

He was critical of faculty cuts, and said inadequate salary money will cause the system to "slip back an additional step or two."

His praise took in graduate programs and scholarships.

The new chancellor also spoke well of the committee that gave him his baptism of fire at a legislature. Its members, after working with him through the session, returned the praise and called relations a "decided improvement" over 1961.

But a few other legislators were ranked at education pressures, and termed Lieuallen the legislature's "highest paid lobbyist."

Gov. Mark Hatfield called the legislature's actions "detrimental to the quality of higher education."

For lower education, from grade one through community colleges, the legislative experience was quieter and happier.

Hatfield and Superintendent of Public Instruction Leon Minear noted that schools got what the government requested, and the community colleges got a little more.

The legislature approved \$141 million for aid to schools, an increase of about \$10 per child. It still left

the state's share of school costs at only about 39 per cent.

Special programs helped \$5.8 million, community colleges, \$4.3, the department of education and vocational rehabilitation \$4.1.

The legislature said it's possible for new community colleges to be created, but they won't get any state help for a while.

Of equal importance, the legislature overhauled basic school funding, separating

special programs and changing to a more realistic count of school children. Its appropriations come out to \$143 per child the first year of the biennium and \$152 the second.

Adjustments were made elsewhere in education. To move school district reorganization along another small step, a new unit was created — the intermediate education district. It will have the effect of letting the old county superintendent's offices contract across county lines.

Complete Visual Care
Contact Lenses
DR. DUKE G. ANDERSON
OPTOMETRIST
ANNOUNCES THE OPENING OF HIS OFFICE
AT
30 CRATER LAKE AVENUE
MEDFORD, OREGON
Office Hours
By Appointment
Telephone
779-1392

PRO-GOP TREND SEEN
Washington — (UPI) — Sen. Barry Goldwater (R-Ariz.) says Republican chances for winning the White House "are not bright right now... but they are getting brighter every day."

THE LONG STRETCH
London — (UPI) — The following ad appeared in the Sunday Times: "Trombone player wishes to sell 28 sports jackets with one arm longer than the other."

The Family Council

Editor's note: The Family Council consists of a judge, psychiatrist, three clergymen, three editors and a women's editor. Each article is a summary of a family disagreement presented to the council. The Council deals with problems, major and minor, entered by guidance counselors and social workers. Edited by Mrs. Alma Denny. (Copyright by General Features Corp.)

Olga P. — He acts as if he can't stand me so why hang around?

Charles P. — I'm a fugitive from her childish dependence and silly talk.

Olga P. — I'm ready to call it quits, pack up, and leave. We've been married only two years and if Charles is this cold to me now, he'll be a glacier in my life in another two years. I'm a warm person, eager to love Charles and to mother a household of our children, but he tells me I bore him and keeps me at arm's length.

Charles P. — Olga had me fooled while we were engaged. I only saw her once a week and she got along fine without me the other six days, but now she follows me around and won't leave me alone a minute when I'm home. If she needs such constant attention, let her get it from her mother. No husband can fill her demands.

The Council — Despite the statistics, this column takes the stand that almost any marriage can be made to work by working on it. Just suppose even half the effort was applied to attracting back the partner, as is spent later in attracting forward a new one. A marriage succeeds when two people can emerge from their solo troubles and set about solving the mate's problems too. This is the course called for in the vows. Yet so many newlyweds are too bogged down in unreadiness and emotional

incompleteness that marriage merely piles new puzzles on top of old humpsters. . . . Here's Olga with so much insecurity left over from her childhood that she strives for reassurance, for ego-booster from her husband. Until she feels strong enough to stand alone, she can't bring much to her marriage. And here's Charles, accustomed to a deep non-giving inner life, brimming over with smug self-sufficiency, refusing to be forced into tenderness and gentleness. If only they could see that they have reacted with opposite extremes of behavior resulting from the same problem — fear of being ignored. With a man like Charles, Olga, try the light touch. He may love you more for not needing him so desperately, the way a bank gives a loan readily to a rich man.

Six Persons Hurt As Bus, Car Collide

Portland — (UPI) — Six passengers aboard a Bend-to-Portland Continental Trailways bus suffered minor injuries when the bus hit a car and went off the road into a dirt embankment near here Sunday.

Stanley Chapman, 57, of Bend, the driver of the bus, told Multnomah county sheriff's officers that he swerved to avoid hitting the car with greater impact.

The bus was carrying 34 passengers. None of the three persons in the car was injured.

BISCUITS

Mrs. Wright's refrigerated biscuits. Regular or buttermilk. Just open, place on baking sheet and bake. 8 oz.

5c

CHEESE

Safeway mild chunk cheese, round mild club, cheddar chunk, snack bar, and Monterey snack bar. Random weights.

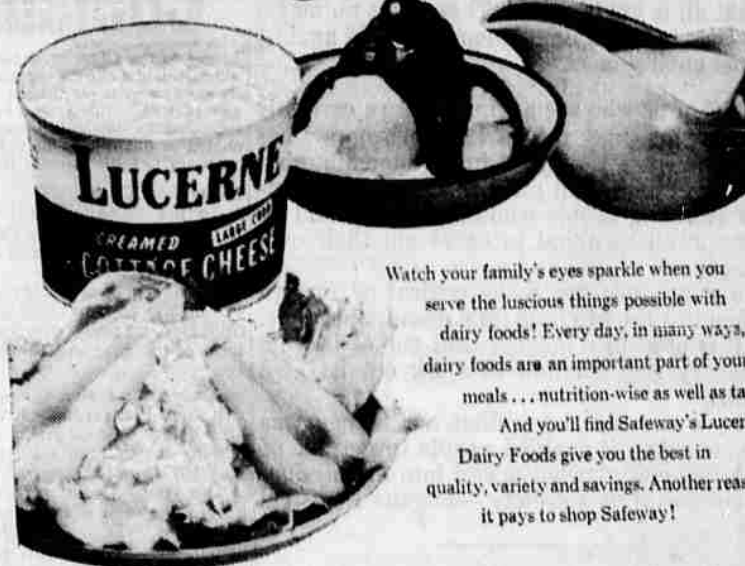
49c lb.

TISSUE

Waldorf, the softest, strongest, nicest tissue of its kind. Save even more. 4 pack.

12 \$1 Rolls

LUCERNE - your best buy in Dairy Foods



Watch your family's eyes sparkle when you serve the luscious things possible with dairy foods! Every day, in many ways, dairy foods are an important part of your family meals... nutrition-wise as well as taste-wise! And you'll find Safeway's Lucerne Dairy Foods give you the best in quality, variety and savings. Another reason it pays to shop Safeway!

- Cheese Spread Betty Lou Tillamook. 4 1/4-oz. 59c
- Cheese Spread Betty Lou, Swiss and Bleu. 4 1/4-oz. 57c
- Cheese Spread Betty Lou, Cream of Swiss. 4 1/4-oz. 55c
- Cheese Spread Betty Lou, American. 4 1/4-oz. 55c

- Sliced Cheese Kraft, Deluxe American. 6-oz. 29c
- Pimento Cheese Kraft, Deluxe sliced. 6-oz. 29c
- Krispy Crackers Sunshine 16-oz. package 31c
- Shortening Snowdrift, all-vegetable. 3-lb. can 65c

Lucerne Finest Farm-Fresh Products

Cottage Cheese pt. 25c
High in Protein. 1/2 gal. 98c, qt. 49c

Fresh Milk 4 1/2 gals. 1.92
3.8% Homogenized. 1/2 gal. 51c, 2 1/2 gals. 1.01

Buttermilk qt. 23c
Summer cooler. 1/2 gal. 45c,

Choc. Drink qt. 26c
A hot weather pleaser

Always Choose Lucerne for Top Quality

BRILLIANT PERFORMANCE! COMET SPORTSTER GETS FLASHING V-8 POWER AND ALL THE TRIMMINGS



An eager 260 V-8 has been lowered into this sleek new S-22 Sportster. The power-to-weight ratio makes performance explosive! To unleash this new thrust, you may choose four-on-floor and a tachometer to keep tabs on those eight big cylinders. Bucket seats and all that jazz are standard equipment on this S-22. Along with bigger wheels (for a better bite) and bigger brakes (for better grip). Put 'em all together and this new Comet Sportster is as fast as it looks. Come in for a test drive, any day you're bored.

The brilliant new Cyclone V-8 is available on all our Comets: convertibles, wagons, sedans.

COMET V-8!

MEDFORD MOTORS, Inc.
225 South Riverside

- CABBAGE
 - CUCUMBERS
 - LETTUCE Romaine
- Your Choice Each

10c

- Lifeguard Soap Coral and Green 2 for 39c
Pine. Bat hbars
- Vim Tablets Pre-measured detergent. 40-oz. 69c
- Rinso Blue The modern detergent. 54-oz. 65c
- Active "All" Controlled suds 24-oz. package 43c
- Dishwasher "All" New, improved 20-oz. package 49c
- Fluffy "All" Leaves clothes softer. 3-lb. 89c
- Wisk Detergent Blue liquid. 16-oz. can 45c
- Swan Liquid Dishwashing detergent. 32-oz. 99c
- Lux Liquid For dishes, fine fabrics. 22-oz. 69c



Lighter Fluid Wizard for Charcoal 32-Oz. Can 59c

Prem Swift's cold lunch meat. 12-Oz. Can 45c

Grapeade Welch's. Fresh tasting. 32-Oz. Bottle 35c

Tissue ScotTissue. White or asstd. 4-Pack 43c

CORNISH GAME HENS

Genuine Rock Cornish hens. All white meat. Gourmet's delight. Perfect for Bar-B-Q.

20-oz. Birds
Each 69c

Case of 12 Havin' a party? Save by the case \$7.98

Prices effective Monday, June 10 thru Wednesday, June 12 at Safeway in Medford. We reserve the right to limit.



SAFEWAY

We Give . . . GOLD BOND STAMPS
for valuable premiums
Books fill up fast when you shop at Safeway

