

# Space Smog Might Hamper Astronauts

By DOUGLAS DILTZ  
United Press International

Los Angeles — (UPI) — America's astronauts could die of "space smog," according to one of the nation's leading bioastronautic scientists.

This chilling possibility was advanced by Dr. Thomas B. Weber, who said: "A tightly-sealed capsule in outer space might be turned into a death chamber by a smog of contaminants emitted from the astronaut's own body."

He said these contaminants might become lethal during an extended period of time in the closed "trap-line" atmosphere of manned interplanetary probes and long-duration space stations. The more men in the spaceship, the more deadly it could become.

"This looms as possibly the most pressing problem we face in preparing for future deep space travel," Weber said.

"Space smog would be 100 times worse than the smog plaguing Los Angeles."

Weber said that whereas smog in the earth's atmosphere is continually circulated, a confined spaceship would surround man with "a hostile environment of a vacuum" that would breed a lethal concentration of "space smog."

## Long Space Trip

On a long space trip, Weber said, a number of chemicals from the body such as methane, acetone and ammonia "could tear up the liver or debilitate the lungs." A lethal dosage of "space smog" could come from the astronaut's breath, saliva, sweat and other functions.

"As man enters space his bacteria will accompany him," the scientist said.

"For example, the skin bacteria could decompose many of the materials exuded through the skin and produce sizable amounts of such contaminants as organic acids."

"New unsuspected toxicants of high concentration probably would enter the spacecraft's atmosphere."

Weber said that, as of now, there are almost no original investigations to be found on toxic hazards in manned space environmental systems. What is needed first, he said, is identification of the contaminants and then a means of removing those that could cause trouble.

"I have been studying this crucial problem for six years and have so far found at least 400 different materials the human body gives off," he said. He added that 80 percent of these possess a potential of being or becoming deadly.

## React With Each Other

"In the spacecraft's atmosphere they might not only accumulate but could react with one another into a contaminant 100 times more toxic than either in its original state," Weber said.

Weber, a former U.S. Air Force scientist at the Aerospace Medical center at Brooks Air Force Base, San Antonio, Tex., is one of the nation's few authorities on space toxicants. He recently became manager of bioastronautics for Beckman Instruments, Inc.

"Russia is way ahead of us in simulated space studies involving toxicants and our lack of experience in this field could be a major roadblock when we try to embark on manned flights to the planets," Weber said.

He said the seriousness of "space smog" has not yet arisen with astronauts because flights to date, such as those in Mercury capsules, have not been long enough for ill effects.

# Cigarette Makers Held Responsible

Tallahassee, Fla. — (UPI) — The Florida Supreme Court ruled Wednesday that cigarette manufacturers can be held liable for injuries or death resulting from use of their products.

The opinion was given in a \$250,000 damage suit filed against the American Tobacco Co. by the widow of a man who died from lung cancer.

The widow, Mrs. Edwin Green Sr., claimed her husband's fatal disease was caused by the firm's cigarettes.

The opinion was requested by the U.S. Fifth Circuit Court of Appeals in New Orleans and will be considered when the court rehears the case.

In an earlier ruling on Mrs. Green's plea the appeals court agreed with a lower federal court that the tobacco firm could not be held liable for Green's death.

But the appeals court agreed to rehear the case and asked the state court for an interpretation of Florida law.

## STAR GAZER

By CLAY R. POLLAN  
Your Daily Activity Guide  
According to the Stars  
To develop message for Thursday, read words corresponding to numbers of your Zodiac birth sign.

<b>ARIES</b> MAR 21-20 7-10-12-15 33-34-38	<b>TALPUS</b> APR 21 1-2-3-4-5-6-7-8-9-10-11-12-13-14-15-16-17-18-19-20-21-22-23-24-25-26-27-28-29-30-31	<b>GEMINI</b> MAY 21 1-2-3-4-5-6-7-8-9-10-11-12-13-14-15-16-17-18-19-20-21-22-23-24-25-26-27-28-29-30-31	<b>CANCER</b> JUNE 21 1-2-3-4-5-6-7-8-9-10-11-12-13-14-15-16-17-18-19-20-21-22-23-24-25-26-27-28-29-30-31	<b>LEO</b> JULY 21 1-2-3-4-5-6-7-8-9-10-11-12-13-14-15-16-17-18-19-20-21-22-23-24-25-26-27-28-29-30-31	<b>VIRGO</b> AUG 21 1-2-3-4-5-6-7-8-9-10-11-12-13-14-15-16-17-18-19-20-21-22-23-24-25-26-27-28-29-30-31	<b>LIBRA</b> SEPT 21 1-2-3-4-5-6-7-8-9-10-11-12-13-14-15-16-17-18-19-20-21-22-23-24-25-26-27-28-29-30-31	<b>SCORPIO</b> OCT 21 1-2-3-4-5-6-7-8-9-10-11-12-13-14-15-16-17-18-19-20-21-22-23-24-25-26-27-28-29-30-31	<b>SAGITTARIUS</b> NOV 21 1-2-3-4-5-6-7-8-9-10-11-12-13-14-15-16-17-18-19-20-21-22-23-24-25-26-27-28-29-30-31	<b>CAPRICORN</b> DEC 21 1-2-3-4-5-6-7-8-9-10-11-12-13-14-15-16-17-18-19-20-21-22-23-24-25-26-27-28-29-30-31	<b>AQUARIUS</b> JAN 21 1-2-3-4-5-6-7-8-9-10-11-12-13-14-15-16-17-18-19-20-21-22-23-24-25-26-27-28-29-30-31	<b>PISCES</b> FEB 21 1-2-3-4-5-6-7-8-9-10-11-12-13-14-15-16-17-18-19-20-21-22-23-24-25-26-27-28-29-30-31
---	--	--	---	--	---	--	---	---	---	--	--

Good Advers. Neutral

# American Samoa Is Now Tourist Haven

By CHARLES BERNARD  
United Press International

Pago Pago, American Samoa — (UPI) — Anyone who visited rundown American Samoa as little as two years ago would find it hard to believe that today this former slum of the South Pacific is being polished into one of the tourist jewels of Polynesia.

The U.S. taxpayer can take pride in the fact his millions being belatedly spent are providing the financial push in American Samoa. But Samoa's 21,000 natives under the sometimes prodding guidance of a quiet-spoken but tough-minded governor are developing the "do-it-yourself" program that bodes well for their future.

From 1900, when the United States took possession of American Samoa's 766 square mile island community, the place was allowed to slowly decay until Governor H. Rex Lee stepped into the picture 18 months ago.

**Financing Facilitating**  
Lee figures the \$22.5 million Congress is expected to have appropriated by the end of 1963 will be almost enough to give American Samoa the physical, medical and educational facilities it has needed for many years.

Within the next two years Lee is confident a development company, financed by private funds of Samoan villages, will have a 100-room hotel in operation to attract the "carriage trade" type of visitor. In anticipation of this Pan American World Airways already has made American Samoa's new jet runway a weekly 707 jet stop on its South Pacific route between the United States and Australia, Panam's landing fees, alone, should run to excess of \$50,000 income to the Samoan government annually.

Lee in the past 18 months has caused a host of new public buildings to be erected, the first major construction in American Samoa since before World War II. He has built the jet runway, a hard-surfaced road from one end of the main island of Tutuila to the other, added schools and is building a medical center.

**Educational Television**  
By the time the hotel is in operation, Lee is determined to have American Samoa equipped with educational television, and have eradicated by vaccination

mosquito-borne filariasis, the dread disease of the tropics which swells its victims' arms, limbs and vital organs to balloon size. Gone will be the outhouses which now mar the otherwise beautiful shoreline of Pago Pago harbor and in their places a modern new sewage system.

In an interview with UPI, Lee looked back on his arrival as governor 18 months earlier. He said until he saw Samoa he had not "been aware of the fact the place had been neglected as long as it had been."

"We had 300 Samoan school teachers, many of whom had the equivalent of only a first or second grade education. We were turning down two-thirds of our children who wanted to and should have gone to high school. We hadn't even really touched on the fundamental medical problems of the people."

**Ready for Conference**  
"In 10 years the U.S. Congress had appropriated \$1.2 million altogether. The year before I got here Samoa got \$2 million and when I arrived I had a \$5 million appropriation for the year, mainly to get the community ready to receive the South Pacific Commission Conference which was held in Pago Pago last summer."

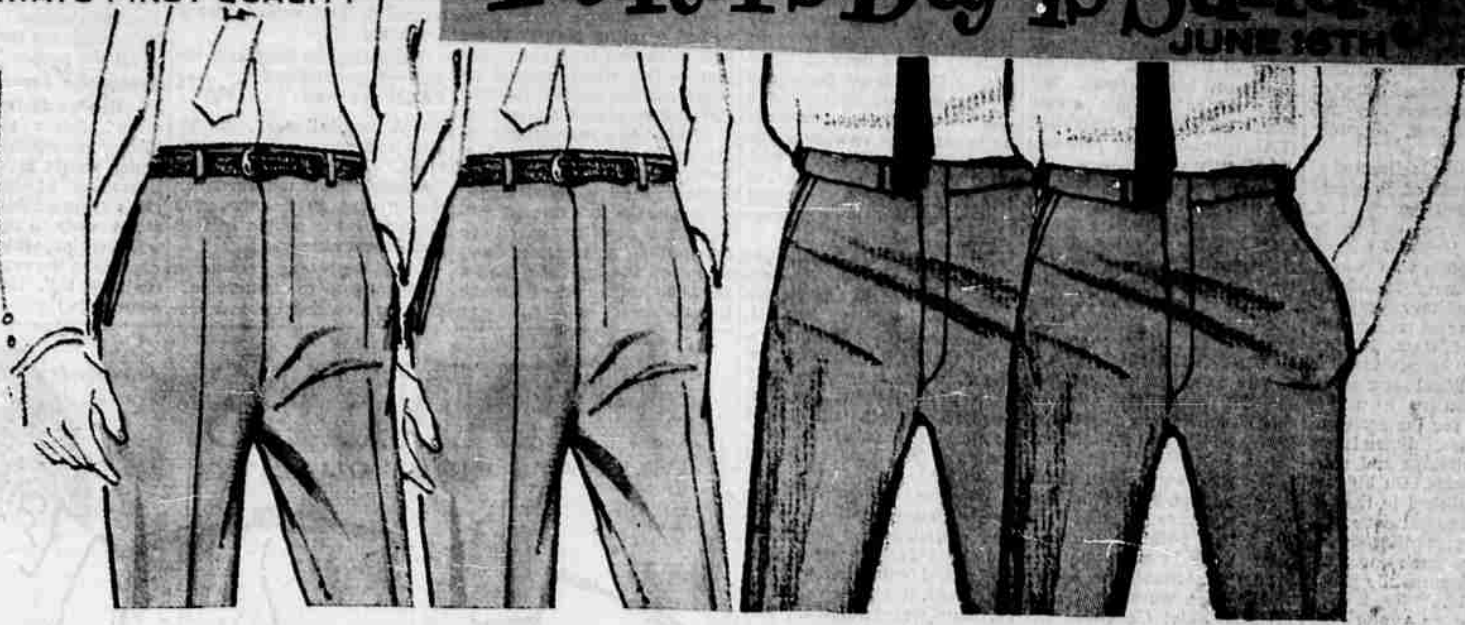
Lee said "three weeks after I got here I wired for another \$5 million and followed that up with a flying visit to Washington where I told my story to the Senate Deficiency Appropriations Committee." As a result, Lee — a career service Department of Interior executive who knows his way around the nation's capitol — got \$9.5 million in 1961 and has received \$13 million for fiscal 1962. He said "this will be the last big budget year" necessary.

Lee said the money spent by the American taxpayer and the self-help efforts on the part of the Samoan chiefs and their people show promises of spreading throughout the South Pacific as gains for U.S. prestige and help for approximately one million other native populations living in Samoa's area of influence.

**KITCHEN SHEARS Used**  
New York — (UPI) — The most used kitchen utensil is neither the coffee pot nor the bread knife. It's the kitchen shears, reports the National Notion association.

**PENNEY'S**  
ALWAYS FIRST QUALITY

**Father's Day is Sunday**  
JUNE 16TH

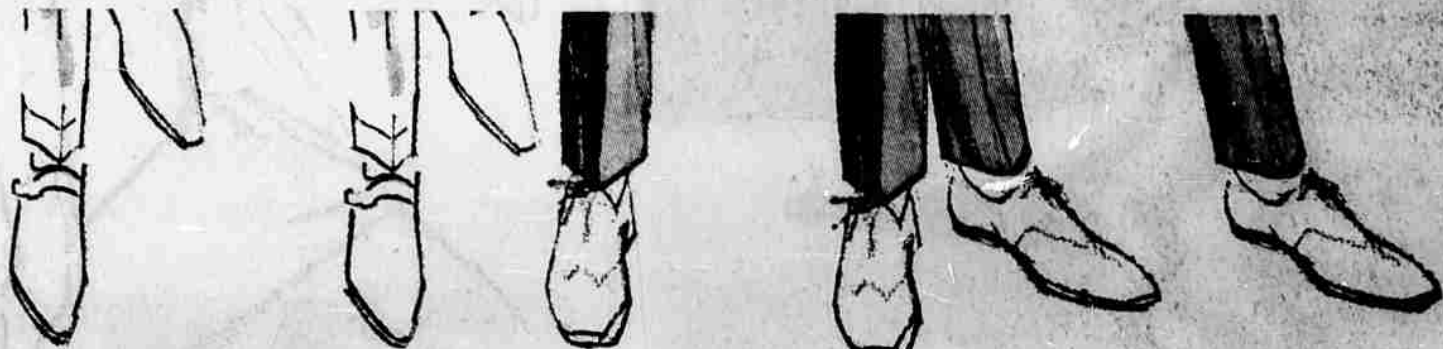


**BUY NOW FOR FATHER'S DAY, JUNE 16th**  
**PERMALON® WASH 'N WEAR SLACKS!**  
a terrific Father's Day Special!

Choose from 3 fabulous 14-ounce blends: Acrilan® acrylic, rayon, and acetate in your choice of flannel weave or gabardine or Orlon® acrylic and rayon in a twist weave! All wash 'n wear handsomely, all come in preferred styles: Continentals, plain-fronts, or pleated models. Big buys!

MEN'S STORE . . . PENNEY'S STREET FLOOR

**2 PAIRS \$14**  
SIZES 29-42



**MEN'S GIANT SLACK FAIR**  
HUNDREDS TO CHOOSE FROM!



**RUGGED 14-OUNCE PERMALON® FLANNEL**

**7<sup>95</sup>**

Sizes 29 to 44

Creslan® acrylic blends with rayon and acetate for a 14-ounce sturdy gabardine Permalon dress slacks.



**PERMANENT CREASE IN NEW GENTRY DRESS WOOL!**

**9<sup>95</sup>**

Sizes 29 to 48

Now! A pant crease that really stays in . . . permanently. Dress slacks in all wool worsted hard-finish flannel!

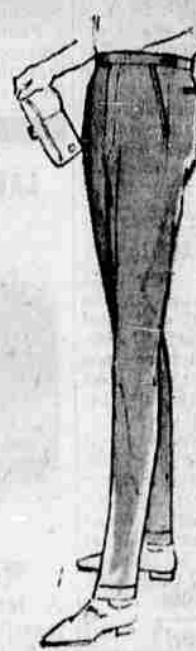


**TOWNCLAD® SLACKS IN ALL WOOL WORSTED!**

**12<sup>95</sup>**

Sizes 29 to 42

Single-pleat-front, model expertly tailored in quality reverse-twist worsted. Deluxe trim. Popular colors.



**LUXURIOUS Reverse Twist WAIST-EEZ DRESS SLACK**

**14<sup>95</sup>**

Sizes 30 to 36

Smooth good looks—smart fitting waist-eez, 2-inch web innerbar. Famous Penney Tailoring — Banker's Grey, Olive, and Dark Brown.



**LUXURIOUS ITALIAN ALL WOOL SHARKSKIN!**

**16<sup>95</sup>**

Sizes 32 to 42

Priced for every budget! Imported Italian sharkskin is California tailored for good looks. New heather tones.

**OPEN Monday and Friday**  
**Nights Till 9 P.M.**

**Charge It!** NO MONEY DOWN

**SAVE FOR THE FUTURE**

Just as the industrious beaver plans for the winter ahead, wise people save for retirement income, their children's education or for a better way of life. Regular deposits in a savings account at The Oregon Bank are fully insured as they grow. Plan for your future at The Oregon Bank.

**the oregon bank**  
PORTLAND  
East Medford—701 E. Jackson St.  
Rogue Valley—1109 Court St.  
Member Federal Deposit Insurance Corp. and Federal Reserve System