

### Information on Use Of Trails Available At Forest Offices

Portland—Latest information on condition and use of specific trails in the national forests can be obtained at forest supervisor or district ranger offices in the area of interest according to the U. S. forest service regional office, Portland.

Use of two-wheel motor vehicles on forest trails is increasing, as is other recreation activity, and numerous

inquiries are being made as to trail conditions and restrictions.

National forest trails are open to two-wheel vehicles except where closed under Secretary of Agriculture regulations. Trails in wild, wilderness, and primitive areas are closed as well as certain trails where vehicles would endanger the public, damage resources, or conflict with

other established uses of the national forests.

**Closed to Vehicles**

About 15 per cent of the 18,000 miles of trails in the national forests of Oregon and Washington are closed to motor vehicles. Most of the closure mileage is within wilderness-type areas or in watersheds which supply water to cities.

Persons using vehicles on

trails open to such use do so at their own risk, the forest service said. Safety of individuals and condition of trails cannot be guaranteed.

Forest supervisors give public notice and post restrictions for each trail closure within their forest. Supervisor offices in Southern Oregon are located at Roseburg (Umpqua), Grants Pass (Siskiyou), Medford (Rogue River), Klam-

ath Falls (Winema), and Lakeview (Fremont).

**Isocracking Reactor Weighs 1.3 Million**

New York—(UPI)—The heaviest piece of freight in American railroad history was shipped on March 9 of this year by Combustion Engineering, Inc. from its plant at Chattanooga, Tenn.

**RECEIVES GRANT**

Corvallis—Kenneth R. Wise, 1600 Stratford way, Medford, has been named a winner of a \$200 scholarship for next year in the Oregon State university school engineering. He was chosen to receive one of the study grants sponsored by Freightliner Corp. for outstanding upperclassmen. Wise will be a junior next year at OSU.

### Local Youth Gets Commission in Navy

Corvallis—Robert Lee Steele, Medford, has been commissioned as an ensign in the Navy following completion of the advanced ROTC program at Oregon State University.

Graduating senior men took the oath of office as a group at OSU's commencement program. All will go on active duty in the service in coming months.

OSU is one of 35 colleges

in the nation that offers advanced ROTC in all branches of service, Army, Navy, Air Force and Marine Corps.

**PLASTIC PIPE**

New York—(UPI)—Home builders can save an estimated \$90 in construction with lightweight plastic drain pipes recently approved by the Federal Housing administration, according to the manufacturing Chemists association.

### Permit Issued for Drive-In Restaurant

A building permit to erect a drive-in restaurant at 725 South Central ave. has been issued by the Medford building department. The permit was issued to Arctic Circle Inc. to build a \$27,000 structure.

Also issued was a permit to Burelson's Ladies Ready-to-Wear store, Main and Bartlett sts., to remodel the building at an estimated cost of \$8,000.



# Betty Crocker BISQUICK

GIANT 60-oz. Pkg.

**39<sup>c</sup>**

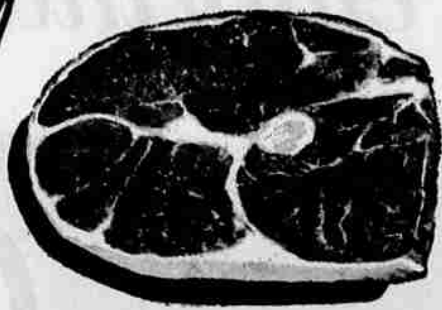
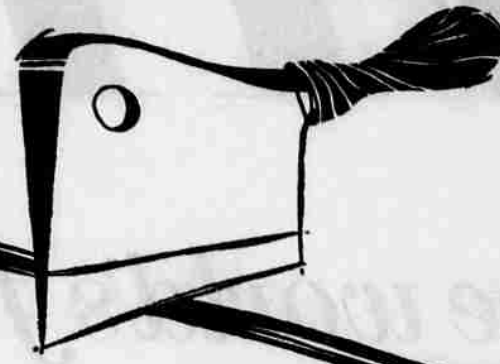
## Cake Mix

Swansdown White, Yellow, Devils

**3 Pkgs. 89<sup>c</sup>**

- Mazola Margarine 1-lb. Package **39<sup>c</sup>**
- Pompeiar Olive Oil 2-oz. Bottle **19<sup>c</sup>**
- White Star Chunk Tuna 1/2s Tin **33<sup>c</sup>**
- IXL Chili W/Beans 300 Tin **3/\$1.00**
- Kaiser Household Alum. Foil 25 ft. Roll **35<sup>c</sup>**
- Kleenex Facial Tissue Box 600 **39<sup>c</sup>**
- Velveeta Cheese Loaf 2-lb. Loaf **89<sup>c</sup>**
- Kraft Cheese Slices (Amer., Pim., or Swiss)—8-oz. Pkg. **\$3/1.00**
- Red Star Dry Yeast Package of 3 **17<sup>c</sup>**
- Modess Sanitary Napkins Package 12 **2/69<sup>c</sup>**

# ROUND STEAK



**69<sup>c</sup>** LB.

U.S.D.A. CHOICE

## Rump Roast

USDA Choice Rolled **lb. 89<sup>c</sup>**

## Pure Pork Sausage

COUNTRY STYLE **45<sup>c</sup>** 2-lbs. **79<sup>c</sup>**

Fresh Fillet

## Red Snapper

**29<sup>c</sup>** lb.

We take pride in bringing you the finest quality meats available.

### WEEKEND BUY!

## COTTAGE FLOUR

10-lb. Bag **69<sup>c</sup>**

### STOCK UP SPECIAL

## Swift's Prem Luncheon Meat

12-oz. Tin **39<sup>c</sup>**

### Del Monte Early Garden Peas

No. 303 Tin **5/\$1.00**

### Trend Liquid Detergent

20-oz. Plastic **49<sup>c</sup>**

### Nabisco Honey Grahams

2-lb. Package **59<sup>c</sup>**

### Nalley's Tang

1 Quart **59<sup>c</sup>**

### 'SHOPPING FLING' SWEEPSTAKES

WIN \$5,000 in CASH... CARS... MINK STOLE! 3 Separate Sweepstakes Drawings: JUNE 11 - JUNE 18 - JULY 2 ENTER SOON! ENTER OFTEN! GET DETAILS HERE



**75<sup>c</sup>**

### Centennial Idaho Red Beans

2-lb. Package **33<sup>c</sup>**

### Dole Pineapple

Crushed Chunk Tidbits - 211 Tin **4/89<sup>c</sup>**

### Diamond "A" Whole Beets

303 Tin **19<sup>c</sup>**

### FROZEN FOODS

- Chat's Meat Pies **4/89<sup>c</sup>**
- Rosarita 16-oz. Mexican Dinners **59<sup>c</sup>**
- Rosarita 12-oz. Enchiladas **45<sup>c</sup>**

### GOOD BUY!

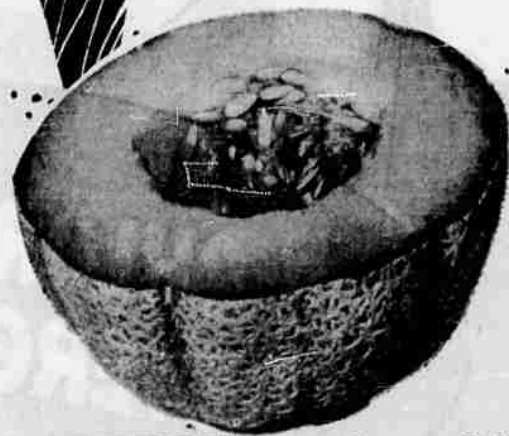
## Northern Toilet Tissue

4 Rolls **29<sup>c</sup>**

### A BIG VALUE

## Carnation CARNIVAL

Assorted Flavors 1/2 Gal. **49<sup>c</sup>**



## CANTALOUPE

FANCY MEATY...

**10 FOR \$1.00**

**LETTUCE**  
Nice Firm Heads **9<sup>c</sup>** each

**CARROTS**  
2-lb. Cello Bag **19<sup>c</sup>**

**POTATOES**  
New White **10/39<sup>c</sup>**

Independently Owned & Operated

### Grandview Mkt.

2330 Grater Lake Ave. Medford  
Hours: 9 a.m. to 8 p.m. Monday Through Sunday

### Market Basket

842 Siskiyou Blvd., Ashland  
Hours: 8:50 a.m. to 8 p.m. Closed Sunday



# Tip-Top MARKETS

### Drive-In Market

South Pacific Highway, Talent  
Hours: 8 a.m. to 9 p.m. Monday through Sunday

### Paulsen & Gates

142 Pine Street, Central Point  
Hours: 8 a.m. to 7 p.m. Closed Sunday

Prices Effective Thru Sunday

Limit Rights Reserved