

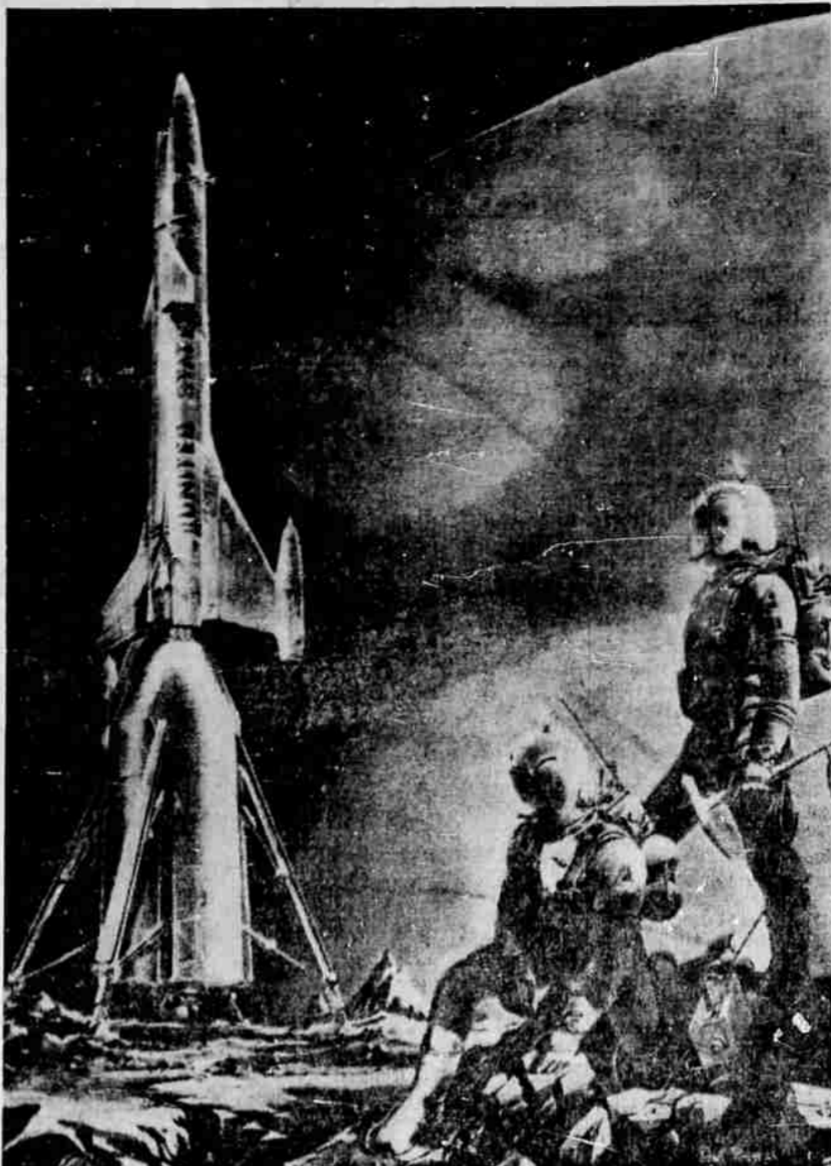
Exploration of Mars Will Be Discussed at Denver Symposium

By JEFFERSON GRIGSBY
 United Press International
 Denver — (UPI) — The first man to set foot on Mars may not find any BEM. But he probably would consider them the least of his problems anyway.
 BEM is science fiction writer's shorthand for Bug-Eyed Monsters, who used to inhabit the red planet back in the tranquil days before fiction started turning into fact.
 Fantasy is becoming possibility so rapidly, in fact, that a group of scientists, engineers and government officials, led by Air Force Secretary Eugene M. Zuckert, will meet here June 6-7 to discuss a subject the science-fiction writers used to consider their private domain—the exploration of Mars.
 General Program Chairman Dr. George Morgenthau of Denver, the symposium's general program chairman, says the fantastically costly feat could be achieved as early as the middle 1970s.

One of the features of the symposium's closing sessions will be an attempt by participants to set this date as closely as possible.
 The symposium on the exploration of Mars is to be presented by the American Astronautical Society and co-sponsored by the National Aeronautics and Space Administration and several other technical societies.
 The problems before them are staggering:
Close Enough to Earth
 A round trip to Mars would cover about 70 million miles under the best circumstances, and the planet is close enough to earth only once every 15 to 17 years to permit this.
 It would take more than a year to accomplish such a journey, using currently envisioned chemical-powered rockets.
 It would cost a sum conservatively estimated in the tens of billions of dollars.
 Before the Mars spaceship

could even start its trip, its parts would have to be rocketed separately into earth orbit and assembled in space. This could require from seven to 15 separate rocket launchings.
 When assembled, the Mars spaceship could weigh two million pounds.
Most 'Earthlike'
 Mars is the most "earthlike" of the planets. Its rotation on its axis is about half an hour longer than an earth day. Its temperatures range from about 85 degrees above zero to about 158 below. It apparently has polar icecaps like earth. It has an atmosphere, made up probably of a lot of nitrogen and a little water vapor and carbon dioxide.
 Every two years the earth comes between Mars and the sun. At such times Mars may be from 34.5 million miles to 61 million miles from Earth. Mars will be less than 35 million miles away on Aug. 10, 1971, and will not be that close again until the 1980s.
 One of the plans for a manned Mars trip now under consideration involves shooting the components into Earth orbit, assembling them by rendezvous, making the journey to Mars, and going into orbit around the planet.
Smaller Exploration
 Then a smaller exploration ship would be detached, to land on Mars, or possibly one of its tiny moons, Phobos and Deimos, where a base camp could be established for the trip to Mars itself.
 After the explorers finished their work on the planet, they would return in their small ship to the mother craft, which would leave the Mars orbit, return to Earth, and land.
Countless Problems
 Such a trip, from Earth orbit to Mars and back to Earth, would take 420 days under this plan, including 40 days in Mars orbit or on the planet itself.
 There are countless problems to solve before the execution of such plans. For one

thing, nobody has yet joined anything together in space.
 The space ship must be heavily shielded to protect the astronauts from murderous radiation.
 Another "life-support" problem is the amount of oxygen and food the spacecraft must carry. These supplies could be less if the astronauts were put into a semi-comatose state for the long trip through space and the flight controlled from Earth.
 But the Mercury Astronaut program proved that astronauts must be able to make decisions, or take emergency action if something goes wrong. A Mars crew probably would be busy with celestial navigation and maintenance, too.
Peterson Receives Superior Ribbon
 Golden, Colo. — Cadet Dale W. Peterson, son of Mr. and Mrs. Wayne L. Peterson, Central Point, has recently been named recipient of the Department of the Army Superior Cadet Ribbon for the second consecutive year at the Colorado School of Mines.
 The award is presented annually to the one outstanding student in each class in military and academic scholarship.
 Peterson has led his class both years and was awarded the Max I. Silber Scholastic Award for 1961-62. He received the Society of Exploration Geophysicists grant in 1961-62 and 62-63, and also the Carpenter grant for school expenses in 1962-63.
 He is a member of the Society of Student Geophysicists, the Wesley club, the Geology club, and Alpha Phi Omega service club.
 Cadet Peterson has enrolled in the Advanced Course, Senior Division ROTC, and will be commissioned a second lieutenant in the U.S. Army Reserve upon graduation from Mines.



SHOWS CONCEPTION — This artist's conception shows two spacemen starting out on expedition after landing their spacecraft on the moon. Exploration of the moon is subject of a conference scheduled in Denver, Colo. (UPI)

Gardner Returns From Shoe Meeting
 Wilbur Gardner, Medford shoe repairman, known internationally through his campaign to make correct labeling of shoe materials compulsory, recently returned from the 16th annual National Shoe Serviceman's Days in Detroit.
 The national meeting was sponsored by the Shoe Institute of America. Gardner addressed a gathering of 2,000 persons and thanked them for the assistance given him in this five-year campaign which terminated in the enforcement of shoe labeling by the Federal Trade commission.
 Plans for the International Congress of the Shoe Repairmen's association to be held in the United States in 1964 were discussed at the meeting, Gardner said. Three cities are being considered as site for the meeting. They are New York, Philadelphia and Cincinnati.

MOVING YOUR Insurance AGENT
 JUNE 10, 1963
Leland Clark Insurance
 —30 Years—
 Safe Insurance at a Savings
 to
OREGON BANK BUILDING
711 East Jackson St.

Peterson Receives Superior Ribbon
 Golden, Colo. — Cadet Dale W. Peterson, son of Mr. and Mrs. Wayne L. Peterson, Central Point, has recently been named recipient of the Department of the Army Superior Cadet Ribbon for the second consecutive year at the Colorado School of Mines.
 The award is presented annually to the one outstanding student in each class in military and academic scholarship.
 Peterson has led his class both years and was awarded the Max I. Silber Scholastic Award for 1961-62. He received the Society of Exploration Geophysicists grant in 1961-62 and 62-63, and also the Carpenter grant for school expenses in 1962-63.
 He is a member of the Society of Student Geophysicists, the Wesley club, the Geology club, and Alpha Phi Omega service club.
 Cadet Peterson has enrolled in the Advanced Course, Senior Division ROTC, and will be commissioned a second lieutenant in the U.S. Army Reserve upon graduation from Mines.

BURK'S Have
 the **GRADUATE'S CHOICE!**
Samsonite
 Luggage for Those Who Give and Want the Best!
Silhouette
 Jet-Age Magnesium Luggage with not a Lock In Sight

When you give Silhouette, you give the gift that lets them join the jet set and travel with the smart set — with elegant Silhouette Luggage by Samsonite. Made of molded magnesium, covered in beautiful patterned vinyl, it scoffs at scuffs, scars, weather and wear. Lightweight, too — with exclusive hidden locks that make other luggage look old-fashioned. Lots of room inside so clothes can keep their press. Oxford Grey or Desert Tan for men. Choice of Oxford Grey, Dover White, Biscayne Blue or Platinum Grey for women.

A. Beauty Case... \$25.00
 B. Ladies' O'Nite... \$27.50
 C. Men's Executive Overnight... \$30.00
 D. Ladies' Wardrobe... \$40.00
 E. Men's Three Suiter... \$45.00
 All prices plus tax

PAY LESS DRUG STORE
 585 E. JACKSON ST. - MEDFORD ORE.
S.M.T. SALE
 PRESCRIPTIONS ARE OUR MOST IMPORTANT BUSINESS!
 Ph. 773-7474

MONDAY TUESDAY SALE
8-INCH ZERO FAN
 7.45 Value
488

ORTHOKLOR-10 Chlordane DUST 89¢

ORTHODUG-GETA PELLETS 98¢

ORTHOWEED-B-GON PINT 1.69

CHARCOAL BRIQUETS Reg. 10 Lbs. 77¢

PLASTIC BARBECUE TABLE CLOTH Reg. 90¢ 49¢

CHAISE LOUNGE AND BEACH PAD Reg. 3.49 2.99

ALUMINUM LAWN EDGING 40" x 4" Reg. 1.59 99¢

LADIES PURSES REG. 2.98 YOUR CHOICE 1.29

MISS MARVEL LEE NYLONS 60-15 REG. 59¢ 2 FOR 87¢

SPALDING PACE-SETTER 4-PLAYER BADMINTON SET COMPLETE 6.00 Value 4.88

DOUGHBOY WADING POOL 30" x 10" 5.00 Value 2.99

BROWN 27-INCH SHOE STRINGS 3 Reg. 5c Pkgs. 9¢

CAMP FRY PAN 1.25 Value 66¢

FLOWER VASE Made in Italy Reg. 1.49 87¢

COMPARE PAY LESS PRICES!

PAY LESS DRUGS

REG. 1.00	CORICIDIN	63c
REG. 3.50	METAMUCIL	2.49
REG. 12c	TUMS	5c
REG. 63c	PHILLIPS MILK OF MAGNESIA	43c

DISCOUNTS ON TOILETRIES

REG. 1.50	TANFASTIC	99c
REG. 98c	BAN ROLL-ON DEODORANT	73c
REG. 1.00	HAIR ROLLERS	77c
REG. 1.50	ADORN HAIR SPRAY	99c

MONDAY MONDAY TUESDAY SALE

They'll Do It Every Time By Jimmy Hatlo

AH, YES... JUST STEP OVER TO THE MIRROR... I'LL CALL OUR HEAD FITTAR...
 BEAUTIFUL! FRED ASTAIRE WAS IN-ORDERED ONE JUST LIKE IT...
 WE'LL HAVE OUR CHIEF DESIGNER TAKE CARE OF THIS ONE! OH, MAX!! WILL YOU CHECK THIS GARMENT, PLEASE?

TO OUR FRIENDS AND CUSTOMERS THRU THE YEARS

The R. A. Holmes Agency, sold to Lowell A. Iverson, has been merged with MEDFORD INSURANCE AGENCY, "The Insurance Center" at 25 West Main Street.

Mr. Iverson is associated with: Mr. Insurance—Fred R. Brennan in the enlarged agency.

Mr. Brennan will lend every assistance to Mr. Iverson in bringing your coverage up to date, and packaging coverages for you in the most economical manner. Mr. Iverson and Mr. Brennan will spend your premium dollar as if it was their own.

We urge you to give every support to Medford Insurance Agency, as we are personally assisting them to make your acquaintance. It is our desire to have you continue with this Agency. Why not visit them at their modern new office with customer parking available. We urge you to do this.

The R. A. Holmes Agency,
Lowell A. Iverson
Eric C. Holmes

Streamlite
 the classic luggage design that's always in style

Triple-strength construction with vinyl coverings... resist travel wear, scuffs or scrapes. Wipe clean with a damp cloth. Ingenious interiors... pack everything neatly... beautifully lined... roomy pockets for easy organizing. Smart travel colors... Hawaiian Blue, Rawhide Finish, Saddle Tan, Ebony Grey, Colorado Brown.

Beauty Case... \$14.95
 Ladies' O'Nite... \$16.95
 Ladies' Wardrobe... \$24.95
 Men's Companion Case... \$16.95
 Men's Two-Suiter... \$24.95
 All prices plus tax

Burk's
 FOR ALL YOUR NEEDS
 314 EAST MAIN • PHONE 772-4472