

Kenya Elections First Step to Independence

By JACK ENSOLL
United Press International
Nairobi, Kenya (UPI)—The erstwhile colony of Kenya is Britain's sole remaining possession on the East African seaboard, and it won't be for long.

In three-day parliamentary elections which ended Saturday, it took the first step to become an independent member of the family of nations.

Kenya's area of a quarter million square miles includes a vast amount of arid and semi-desert country, one of the reasons for its backwardness and slow emergence into the 20th Century. In three-fifths of the country, water must be conserved and water supplies developed before there can be increased production.

Most of the six-million African-owned cattle are property of the few pastoral tribes who live in these areas. A decreasing number of Europeans also own ranches in the drier regions.

Story in Itself

The geography of Kenya is almost a story in itself. It is bounded on the east by the Indian Ocean with a coastline stretching from the Somalia border in the north to Tanganyika, in the south. A distance of almost 400 miles.

North of Kenya lies Ethiopia; the Sudan is on its north-west border, and to the west are Uganda and Lake Victoria.

From a narrow, fertile coastal strip, the land rises gradually through torn scrub and Savannah to forest, which starts 8,000 feet above sea-level. The country within which most economic production is centered lies from 5,000 to 8,000 feet above sea level.

Mainly Are Africans

Kenya's 7.25 million population is comprised mainly of Africans, but they are divided into over 40 different tribes, largest of which is the 1 million strong Kikuyu.

Although classed with the Asians and the Europeans as immigrant races, the Arabs who inhabit the coastal strip have been there for many centuries and were among the first traders and merchants to arrive on the east coast of Africa. Today they number some 39,000.

Of the 178,000 Asians in Kenya, about two-thirds are Hindus and the remainder Muslims.

The majority of Kenya's



CONTRAST NOTED—Lone Turkana herdsman, at top, standing on rock looking toward Cherangani mountain range in Kenya's black semi-desert northern province, contrasts sharply with Nairobi's modern city square, shown in bottom picture. The first

step toward independence for Kenya, Great Britain's sole remaining possession on East African seaboard, will be taken during forthcoming Parliamentary elections. (UPI)

68,000 Europeans are of British origin.

Based on Agriculture

Kenya's economy is based predominantly on agriculture. The country's known mineral wealth, unlike that of neighboring Uganda and Tanganyika, is small. Water resources, soil and livestock are Kenya's chief assets.

However, half the country lies within the low-rainfall belt, with the result that many

people lead a nomadic life, wandering about the countryside with their herds of sheep, cattle and goats.

Most agricultural exports come from the well-watered highlands between Nairobi and Lake Victoria. Chief among these are coffee, tea, sisal, pyrethrum, wattle-bark, meat and dairy produce. Hides and skins from the drier, pastoral areas are also an important factor in the earning

Chamber Directors Endorse Extension of Eighth Street

A recommendation of the highway committee of the Medford Chamber of Commerce calling for extension of Eighth st. to the Oak Grove area was endorsed by the chamber board of directors at the recent meeting at the Rogue Valley Country Club.

The committee asked that the chamber write the state highway commission advocating that the state proceed immediately to acquire the right of way.

Object of the request, presented by Chester Hubbard, reporting for Paul Rynning, committee chairman, is to alleviate present and future traffic congestion in this expanding area.

The possibility that Barnett rd. will soon be increased to a four-lane road was reported by Hubbard at the same session. Hubbard also gave the board a description of the Winnemucca to the Sea Highway development and of Interstate 5 from Ashland to the California border, a project

which will probably be let out to bids later this year.

Reports on Progress

Manager Don McNeil gave the board a brief resume of progress of House Bill 1462 which, he said, exempts union hiring halls from property taxes. The board went on record opposing the measure.

Ray Johnson, chairman of the retail trade committee of the chamber, reported that the two main objectives of his committee are an 18 month plan dealing with a strong series of promotions for great-

er Medford designed to extend the retail marketing area throughout the valley, and the inclusion of more retailers on the chamber board.

Manville Heisel spoke on the activities of the Area Redevelopment Administration and contended that the agency started out four years ago as a temporary relief program and is now attempting to perpetuate itself by expanding into a permanent arm of the federal government. It started with 103 so called depressed areas or communities, Heisel said, and now reports 1,000 cities in the depressed category.

Heisel declared that he wanted to spike reports that the Area Redevelopment Administration was being supported as a principle by the U.S. Chamber of Commerce. This, he stated, is not true. He urged the members of the Medford board to study the Area Redevelopment Administration program and be prepared to take action on the subject at a later meeting.

PLANS DELAYED

Oxnard, Calif. (UPI)—Mrs. Julia Scott's plans to leave for New York Thursday were delayed by a moving van company. Mrs. Scott had sold her furniture to a family in Riverside, some 200 miles away, and her airline ticket, \$1,000 in cash and personal papers were in a drawer of a dresser in a moving van taking it to Riverside.

CARPET
100% WOOL
As Rugs - or Wall-to-Wall

49^c Sq. Foot

NO MONEY DOWN!
Payments Low As \$10 Per Month

LAURINE'S
CARPET HOUSE
520 SOUTH RIVERSIDE
Next to Oregon Food Store

No money down on credit at Wards—just say "Charge It!"



MEN! SAVE 1/3

COOL BRENT SPORT SHIRTS IN SOLIDS, STRIPES, PLAIDS, CHECKS

Stock up now during Wards May celebration! Choose classic spread collars or popular Ivy style button-downs, tailored of Dacron® polyester 'n cotton. Spread styles, too, woven of Egyptian cotton in handsome gingham plaids. S, M, L, XL.

1.99
REGULAR 2.98

Newberrys PRICE BUSTERS

OPEN SUNDAYS 10 a.m.—5:30 p.m.

Bring the whole family... shop in all 54 big departments, where the selection is wide... the savings big. Treat the family to a delicious luncheon at our

ROGUE SIDEWALK CAFE

SUNDAY & MONDAY ONLY
... CHARGE IT ...

COTTON
TERRY CLOTH

Scoop up arm loads of first quality Terry, the wonderful, wearable, washable, no-iron favorite for summer. Beach jackets and towels, swim suits, shorts, tops, seat covers, aprons or bathroom curtains. Delicious pastel colors and white. 36". Reg. 77c.

66^c
yd

SIMULATED
Butcher Linen

Sparkling solid colors, selected especially for summer sports wear. Interesting rough weave creates a sturdy, washable fabric of undetermined blended fibers. 36" wide. Reg. 54c.

2^{YDS} \$1

PRINTED
PETTIPPOINT

All cotton, textured Pettipoint that is bright and crisp, washing after washing. Beautiful assortment of prints... especially lovely florals for summer dresses. 36" to 45" wide, in lengths to 10 yards.

67^c
yd

SHOPPING CENTER ONLY

635 E. JACKSON—ACRES OF FREE PARKING

Area Chairmen Noted for Program

Gov. Mark Hatfield has announced the appointment of community chairmen to coordinate local participation in the Oregon Welcome program.

Serving as chairman for Medford is R. C. Ross, vice president, First National Bank of Oregon. E. O. Graham is Jacksonville's chairman.

The Governor invited all citizens, business firms, organizations and community groups to join in the Welcome program and endeavor to make some use of the Welcome symbol. He particularly urged that all citizens familiarize themselves with their own local tourist attractions and to be alert with suggestions on interesting places to see and things for the tourist to do.

The Governor urged local citizens interested in participating in the program to contact the local chairman or write to the committee's office in Portland for a brochure outlining the full program.

Be Choosy... Get **Jacuzzi PUMPS!**

1/2 H.P.
DEEP WELL PUMP
With 42 Gal. Tank and Air Charger
\$15.95 down,
\$13.15 per mo.

Centrifugal Irrigation Pumps
\$29.50 end up

Siskiyou Hardware
223 W. Main Ph. 772-2939
• 5&H GREEN STAMPS •

16% OFF
wash 'n wear
extra-narrow
continentals

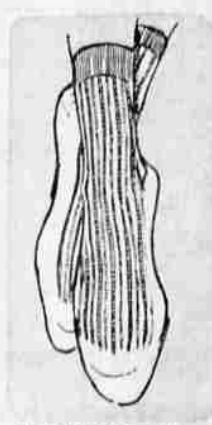
3.33
REG. 3.98
BOYS SIZES 6 TO 16

Hurry to Wards for beltless slacks at a sale-price! They're styled the way boys like 'em—form-hugging, low riding, with legs that taper down to trim cuffless bottoms. Choose heavy-weight Sanforized-Plus™ cotton sateen plaids or extra long-wearing cotton-420 nylon random cords in new Spring solid colors. Dash in now! *5-ways tested for wash 'n wearability



BOYS' REG. 1.98
SWIM TRUNKS
1.66

Galey & Lord tarpoon cloth of Sanforized combed cotton. Woven plaids. Sizes 12-18. Reg. 1.49, 4-10.1.26



MEN'S REG. 79c
BAN-LON® SOCKS
2 PR. \$1

Stock up now! Save 37% on Ban-lon® nylon stretch socks. Big group of rib styles in many colors.



MEN'S KNITS
REDUCED 42%
2 for 1.50 REG. 1.29

Shrink proof combed cotton shirts... now at big May savings! Form fitting. In wanted colors. S, M, L.

117 S. Central

773-7301

Open 9:30 to 5:30

Free Parking