

# The Return from Space of L. Gordon Cooper

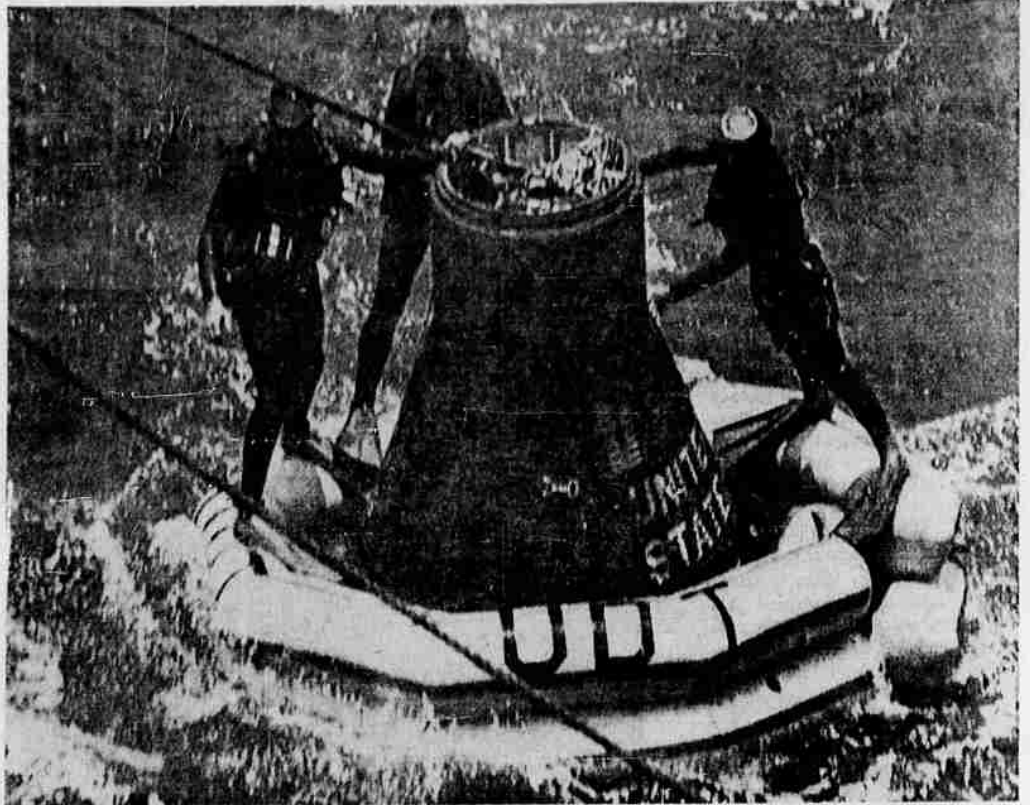


America's newest space man, L. Gordon Cooper, returned from space Thursday with the precision with which he was launched into orbit Wednesday. After 22.9 orbits and more than 34 hours in space, his capsule, Faith 7, splashed into the Pacific about five miles from the carrier, USS Kearsarge.

The United Press International picture via cable-photo at left shows a whale boat from the Kearsarge standing by the capsule after attaching a cable to hoist the capsule aboard the carrier. Navy frogmen sit on the floatation ring they put around the vehicle.

In the picture at right, the frogmen are shown fastening the floatation ring.

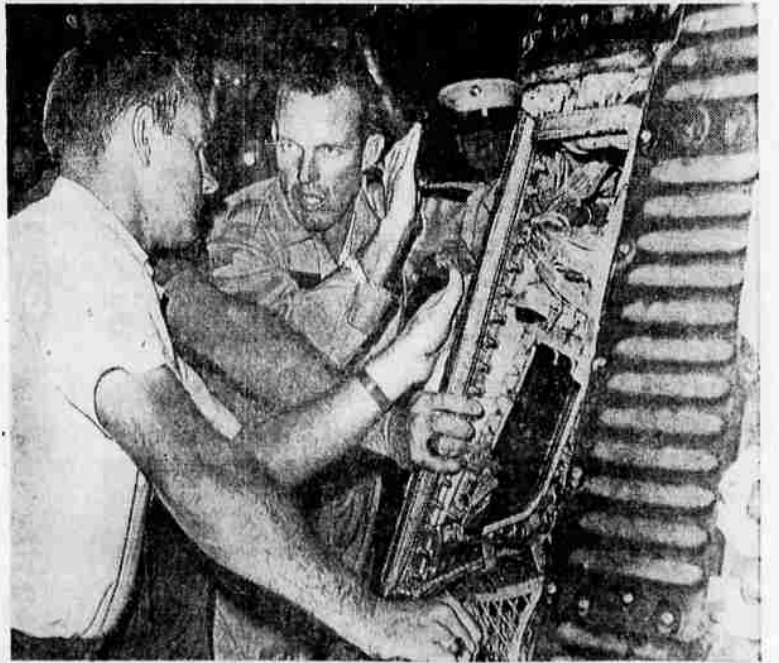
Mrs. Gordon Cooper (below) beams with pride as she talks with newsmen following the recovery of her astronaut husband, L. Gordon Cooper. Mrs. Cooper and the couple's two daughters have arrived in Honolulu for a reunion with the astronaut. (UPI)



Gordon Cooper wears a happy smile as he leaves the space capsule aboard the USS Kearsarge above. At right is Dr. Richard Pollard and at left is John Graham, team leader of the NASA. (UPI)



Mrs. Hattie Cooper, mother of Astronaut L. Gordon Cooper, talks by telephone from her house in Tecumseh, Okla., to Air Force Secretary Eugene Zuckert moments after hearing the welcome news that her son had made a successful landing in the Pacific. (UPI)



Astronaut L. Gordon Cooper, standing beside his Faith 7 space capsule, gestures with his hand as he discusses his flight with NASA officials aboard the aircraft carrier USS Kearsarge taking him to Honolulu, where he joined his family late Saturday. (UPI)



Astronaut L. Gordon Cooper, in picture at left above, waves to crewmen of the USS Kearsarge after he stepped out of the space capsule. (UPI)

L. Gordon Cooper, in picture at left below, is shown as he walks away from the Faith 7 space capsule aboard the carrier USS Kearsarge. (UPI)

Save... where you are paid more

Now **4 1/4%** Per Annum

**JCF** Jackson County Federal Savings and Loan Assn.

Home Office—2 E. Main, Medford • Ashland Branch—337 E. Main, Ashland

