

On the Air

By ELEANOR WIESE

In the hope of getting an extra inch of publicity in newspaper columns, the television networks diligently dispatch daily thousands of pounds of publicity releases, investing thousands of dollars in postage.

Most of these tons of printed words are filed in the usual place, but occasionally an interesting facet of the television world is described.

Take "Of Cast, Calories and the Culinary Craft of 'Gunsmoke,'" a TV feature story from CBS. It explains how the cast has a more formidable enemy to fight than the bad guys. Overweight is the villain, resulting from the superb cuisine of the show's prop man.

Many viewers of the show may not be aware that the make-believe in television doesn't apply to food used in scenes. It's all real, and on "Gunsmoke" prop man Giem Widrig takes time and trouble to make sure it's palatable. He believes it makes for a better scene in the show if the actor enjoys his food.

The "Gunsmoke" regulars eat more on the job than most television actors because many of their scenes are played in a set representing Delmonico's Restaurant in Dodge City. They develop the plot between mouthfuls of home-cooked stew, apple and pumpkin pie, barbecued ribs, steak, chili and cups of strong coffee.

Hero Matt Dillon sometimes faces three steaks in a row in refilling a scene. Even Jim Arness's 6 foot 6 inch frame cannot take this without vigorous exercise between takes.

One complicating factor is vegetarian Dennis ("Chester") Weaver. He asks that whatever he eats on the show come from his favorite health-food store.

"That means special pies from organically grown fruit," prop man Widrig says. "They cost \$7.50 each. One day the store sent over stuffed green peppers for a restaurant meal. That was too fancy a dish for the 1870's so I asked them for something that would look like a meat loaf. They made it out of mushrooms, nuts and vegetables, just for Dennis, and it worked fine."

Food has to fill a dual role—it has to taste good and look right for the camera. To make sure it's served piping hot, portable grills are used even for campfire scenes to be sure of authentic steam.

Beer drawn in Miss Kitty's Longbranch Saloon is real draft brew too. That's because no substitute has been found that looks or photographs like real foam on a glass of beer.

As Milburn ("Doc Adams") Stone puts it: "We have the best tasting props in town."

I AM WITH YOU, 10:30 a.m. Sunday KMED-TV. First part of a four-part history of the Catholic Church and its Ecumenical Councils, filmed in eight countries of Europe and the Near East.

TOURNAMENT OF CHAMPIONS, 1:30 p.m. Sunday KMED-TV. Golfer Bob Ross and entertainer Phil Harris will be two of the commentators for this tournament played only by golfers who have won a major PGA tournament in the past 12 months.

TWENTIETH CENTURY, 8 p.m. Sunday KBES-TV. "Seige at Malta," the heroic story of the tiny Mediterranean island's incredible perseverance under unending air attacks by the Italian and German air forces during World War II. (Repeat)

G. E. TRUE, 9:30 p.m. Sunday KBES-TV. First of a two-part story of two members of the Free Czech army who were parachuted into their German-occupied homeland to assassinate "Hangman" Reinhard Heydrich, Himmler's second in command of the Gestapo.

SHOW OF THE WEEK, 10 p.m. Sunday KMED-TV. "Something to Hide," an original mystery-suspense drama by English author Leslie Sands, concerning a romantic triangle which results in an accidental killing and a murder.

STARLIGHT CONCERT, 8 p.m. Sunday KBOY-AM (first half hour) and KBOY-FM radio. Featured tonight are selections from American composers Aaron Copeland, Samuel Barber, and William Schuman, and ballads by Carl Sandburg.

DICK POWELL THEATRE, 9:30 p.m. Tuesday KMED-TV. Emmy award winner Peter Falk and Dick Powell are the stars of "The Doomsday Boys," the story of three convicts who volunteer to be medical "Guinea pigs" for a prison doctor. (Repeat)

row in refilling a scene. Even Jim Arness's 6 foot 6 inch frame cannot take this without vigorous exercise between takes.

One complicating factor is vegetarian Dennis ("Chester") Weaver. He asks that whatever he eats on the show come from his favorite health-food store.

"That means special pies from organically grown fruit," prop man Widrig says. "They cost \$7.50 each. One day the store sent over stuffed green peppers for a restaurant meal. That was too fancy a dish for the 1870's so I asked them for something that would look like a meat loaf. They made it out of mushrooms, nuts and vegetables, just for Dennis, and it worked fine."

Food has to fill a dual role—it has to taste good and look right for the camera. To make sure it's served piping hot, portable grills are used even for campfire scenes to be sure of authentic steam.

Beer drawn in Miss Kitty's Longbranch Saloon is real draft brew too. That's because no substitute has been found that looks or photographs like real foam on a glass of beer.

As Milburn ("Doc Adams") Stone puts it: "We have the best tasting props in town."

I AM WITH YOU, 10:30 a.m. Sunday KMED-TV. First part of a four-part history of the Catholic Church and its Ecumenical Councils, filmed in eight countries of Europe and the Near East.

TOURNAMENT OF CHAMPIONS, 1:30 p.m. Sunday KMED-TV. Golfer Bob Ross and entertainer Phil Harris will be two of the commentators for this tournament played only by golfers who have won a major PGA tournament in the past 12 months.

TWENTIETH CENTURY, 8 p.m. Sunday KBES-TV. "Seige at Malta," the heroic story of the tiny Mediterranean island's incredible perseverance under unending air attacks by the Italian and German air forces during World War II. (Repeat)

G. E. TRUE, 9:30 p.m. Sunday KBES-TV. First of a two-part story of two members of the Free Czech army who were parachuted into their German-occupied homeland to assassinate "Hangman" Reinhard Heydrich, Himmler's second in command of the Gestapo.

SHOW OF THE WEEK, 10 p.m. Sunday KMED-TV. "Something to Hide," an original mystery-suspense drama by English author Leslie Sands, concerning a romantic triangle which results in an accidental killing and a murder.

STARLIGHT CONCERT, 8 p.m. Sunday KBOY-AM (first half hour) and KBOY-FM radio. Featured tonight are selections from American composers Aaron Copeland, Samuel Barber, and William Schuman, and ballads by Carl Sandburg.

DICK POWELL THEATRE, 9:30 p.m. Tuesday KMED-TV. Emmy award winner Peter Falk and Dick Powell are the stars of "The Doomsday Boys," the story of three convicts who volunteer to be medical "Guinea pigs" for a prison doctor. (Repeat)

row in refilling a scene. Even Jim Arness's 6 foot 6 inch frame cannot take this without vigorous exercise between takes.

One complicating factor is vegetarian Dennis ("Chester") Weaver. He asks that whatever he eats on the show come from his favorite health-food store.

"That means special pies from organically grown fruit," prop man Widrig says. "They cost \$7.50 each. One day the store sent over stuffed green peppers for a restaurant meal. That was too fancy a dish for the 1870's so I asked them for something that would look like a meat loaf. They made it out of mushrooms, nuts and vegetables, just for Dennis, and it worked fine."

Food has to fill a dual role—it has to taste good and look right for the camera. To make sure it's served piping hot, portable grills are used even for campfire scenes to be sure of authentic steam.

Beer drawn in Miss Kitty's Longbranch Saloon is real draft brew too. That's because no substitute has been found that looks or photographs like real foam on a glass of beer.

As Milburn ("Doc Adams") Stone puts it: "We have the best tasting props in town."

I AM WITH YOU, 10:30 a.m. Sunday KMED-TV. First part of a four-part history of the Catholic Church and its Ecumenical Councils, filmed in eight countries of Europe and the Near East.

TOURNAMENT OF CHAMPIONS, 1:30 p.m. Sunday KMED-TV. Golfer Bob Ross and entertainer Phil Harris will be two of the commentators for this tournament played only by golfers who have won a major PGA tournament in the past 12 months.

TWENTIETH CENTURY, 8 p.m. Sunday KBES-TV. "Seige at Malta," the heroic story of the tiny Mediterranean island's incredible perseverance under unending air attacks by the Italian and German air forces during World War II. (Repeat)

G. E. TRUE, 9:30 p.m. Sunday KBES-TV. First of a two-part story of two members of the Free Czech army who were parachuted into their German-occupied homeland to assassinate "Hangman" Reinhard Heydrich, Himmler's second in command of the Gestapo.

SHOW OF THE WEEK, 10 p.m. Sunday KMED-TV. "Something to Hide," an original mystery-suspense drama by English author Leslie Sands, concerning a romantic triangle which results in an accidental killing and a murder.

STARLIGHT CONCERT, 8 p.m. Sunday KBOY-AM (first half hour) and KBOY-FM radio. Featured tonight are selections from American composers Aaron Copeland, Samuel Barber, and William Schuman, and ballads by Carl Sandburg.

DICK POWELL THEATRE, 9:30 p.m. Tuesday KMED-TV. Emmy award winner Peter Falk and Dick Powell are the stars of "The Doomsday Boys," the story of three convicts who volunteer to be medical "Guinea pigs" for a prison doctor. (Repeat)

row in refilling a scene. Even Jim Arness's 6 foot 6 inch frame cannot take this without vigorous exercise between takes.

One complicating factor is vegetarian Dennis ("Chester") Weaver. He asks that whatever he eats on the show come from his favorite health-food store.

"That means special pies from organically grown fruit," prop man Widrig says. "They cost \$7.50 each. One day the store sent over stuffed green peppers for a restaurant meal. That was too fancy a dish for the 1870's so I asked them for something that would look like a meat loaf. They made it out of mushrooms, nuts and vegetables, just for Dennis, and it worked fine."

Food has to fill a dual role—it has to taste good and look right for the camera. To make sure it's served piping hot, portable grills are used even for campfire scenes to be sure of authentic steam.

Beer drawn in Miss Kitty's Longbranch Saloon is real draft brew too. That's because no substitute has been found that looks or photographs like real foam on a glass of beer.

As Milburn ("Doc Adams") Stone puts it: "We have the best tasting props in town."

I AM WITH YOU, 10:30 a.m. Sunday KMED-TV. First part of a four-part history of the Catholic Church and its Ecumenical Councils, filmed in eight countries of Europe and the Near East.

TOURNAMENT OF CHAMPIONS, 1:30 p.m. Sunday KMED-TV. Golfer Bob Ross and entertainer Phil Harris will be two of the commentators for this tournament played only by golfers who have won a major PGA tournament in the past 12 months.

TWENTIETH CENTURY, 8 p.m. Sunday KBES-TV. "Seige at Malta," the heroic story of the tiny Mediterranean island's incredible perseverance under unending air attacks by the Italian and German air forces during World War II. (Repeat)

G. E. TRUE, 9:30 p.m. Sunday KBES-TV. First of a two-part story of two members of the Free Czech army who were parachuted into their German-occupied homeland to assassinate "Hangman" Reinhard Heydrich, Himmler's second in command of the Gestapo.

SHOW OF THE WEEK, 10 p.m. Sunday KMED-TV. "Something to Hide," an original mystery-suspense drama by English author Leslie Sands, concerning a romantic triangle which results in an accidental killing and a murder.

STARLIGHT CONCERT, 8 p.m. Sunday KBOY-AM (first half hour) and KBOY-FM radio. Featured tonight are selections from American composers Aaron Copeland, Samuel Barber, and William Schuman, and ballads by Carl Sandburg.

DICK POWELL THEATRE, 9:30 p.m. Tuesday KMED-TV. Emmy award winner Peter Falk and Dick Powell are the stars of "The Doomsday Boys," the story of three convicts who volunteer to be medical "Guinea pigs" for a prison doctor. (Repeat)

Dr. Whitaker will speak at the Southern Oregon college assembly at 11 a.m. He will attend a luncheon for businessmen and women at the Jackson House at noon.

A social hour and reception at the Jackson House will be held at 6 p.m. preceding a dinner and discussion at 8:30 p.m. The discussion will be devoted to the closed circuit TV program on the United Nations, scheduled for 4:15 to 5:15 p.m. The evening's lecture will start at 7:45 p.m.

Anyone wishing information regarding any one or all four sessions is asked to telephone Mrs. Wallace Robinson at 773-1717.

Reservations may be made for the luncheon and dinner by telephoning 482-0060 (Ashland) or 773-7411, extension 389 (Medford) or by mailing requests to Mrs. Robinson, 29 Ross Court, Medford.

Tickets are available at Lawrence's Jewelers, 21 North Central ave., Medford.

Dr. Urban Whitaker, associate professor of international relations, San Francisco State college, a lecturer on U.S. foreign policy, United Nations, Communist China and International law, will be held in Medford Monday, May 13, to discuss the United Nations.

The Jackson County Chapter of the Oregon United Nations association has arranged four sessions to examine facts concerning the controversies and criticisms of the United Nations.

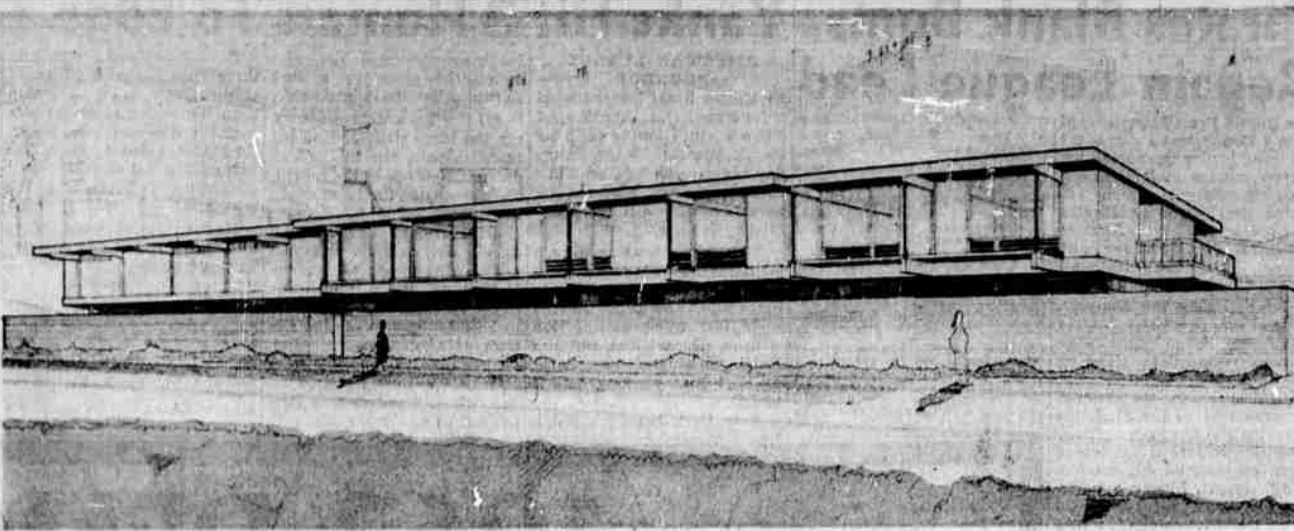
Dr. Whitaker will speak at the Southern Oregon college assembly at 11 a.m. He will attend a luncheon for businessmen and women at the Jackson House at noon.

A social hour and reception at the Jackson House will be held at 6 p.m. preceding a dinner and discussion at 8:30 p.m. The discussion will be devoted to the closed circuit TV program on the United Nations, scheduled for 4:15 to 5:15 p.m. The evening's lecture will start at 7:45 p.m.

Anyone wishing information regarding any one or all four sessions is asked to telephone Mrs. Wallace Robinson at 773-1717.

Reservations may be made for the luncheon and dinner by telephoning 482-0060 (Ashland) or 773-7411, extension 389 (Medford) or by mailing requests to Mrs. Robinson, 29 Ross Court, Medford.

Tickets are available at Lawrence's Jewelers, 21 North Central ave., Medford.



STUDENT HEALTH FACILITY—Bids will be opened May 17 at 2 p.m. for the construction of a Student Health center at Southern Oregon college. The center, to be located at Siskiyou Blvd. and Indiana Ave., will include an out-patient department, a bed-patient area, and doctors' offices, examining areas, x-ray, laboratory, physiotherapy and nurses' work areas. The structure will include about 10,783 square feet of space. The exterior will be of western red cedar and Douglas fir. It will be completely air conditioned. The bids will be opened in Churchill Hall, according to Payne and Struble, Medford architects for the structure. This view shows the proposed structure from Highway 99.

Highway Taxes Discussed by Governmental Group

A motion to oppose Senate Bill 59 which deals with highway use taxes was amended to indicate strong opposition to only that part of the bill which would increase the tax burden on logging trucks in Oregon. It was then passed by unanimous vote by the governmental operations committee of the Medford Chamber of Commerce.



The committee was given the logging truck operators' viewpoint by Darrell Davis of King Trucking, president of the Southern Oregon Conservation and Tree Farm association; and by Dale Prentice, secretary-treasurer of the association.

The two spoke before the group at the regular meeting, called by Chairman Robert D. Heffernan Jr., at the Hotel Medford.

Urges Consideration

Davis asked that there be no increase in the weight mile tax on logging trucks and urged the committee to consider three points in summary. These points were:

1. Belief that all trucks should pay their fair share in the cost of constructing and maintaining the public road system; but that this fair share in the cost of constructing and maintaining the public road system; but that this fair share be based upon the type of roads used and a realistic application of their actual destructive effects upon the roads.
2. That SB 59 proposes to raise the tax on loggers and lower the tax on freight trucks, which now pay approximately 18 per loaded mile in combined state and federal taxes while highway freight trucks in the same weight category pay approximately 11 1/2 per loaded mile.
3. This legislation is unrealistic and, if passed, will put Oregon's No. 1 industry at a further economic disadvantage.

Copies of the report submitted to the House Highways committee, listing the typical operation of a log truck with costs and taxes included, were distributed to committee members.

The committee expressed the opinion that as a result of the Illinois Road Tests the Highway Transport Industry had earned a reduction in taxes and should have the recognition provided in SB 59. Because of this opinion the governmental operations committee amended the motion to restrict the opposition to only that part of the bill which would increase the "already heavy tax burden" on logging trucks in Oregon.

The motion, as amended, was approved with a unanimous vote.

The stand taken by the governmental operations committee was endorsed by the Medford Chamber of Commerce board when presented the following day to that group by Heffernan.

Manager Don McNeil is instructed to forward the report of the chamber's action to the legislature.

Dr. Roseberry Takes Drive Chairmanship

Dr. George Roseberry, 3310 Hollywood ave., Medford, has accepted the state chairmanship of the Kansas Wesleyan University National Alumni fund drive. He will also be the local chairman in the Medford area. Dr. Roseberry is pastor of the First Methodist church, Medford.

National chairmen this year is Joseph T. Owens, vice president, general counsel and secretary of Pittsburgh Plate Glass company in Pennsylvania. National vice chairman is Chester A. Brown, general manager of Pueblo's Single Fund Plan Inc., Pueblo, Colo.

Last year Kansas Wesleyan ranked eighth in the nation among small coeducational colleges in the percentage of alumni and former students contributing to the alumni fund. Gifts were received from 40 per cent of the alumni. This year's goal is to better the record.

Approximately 250 workers, including state and city chairmen, are participating in the campaign.

Coos Bay Woman Hurt in Accident

Ashland - Bernice Olinda Mathews, 42, of Coos Bay, was hospitalized here Thursday after she received neck injuries in an auto accident.

The accident occurred at 2:44 p.m. at the intersection of Maple and North Main sts. when the car she was driving was struck in the rear by an auto driven by Bruce Michael Bonney, 19, of Grants Pass, according to Ashland police.

Mrs. Mathews was confined to Ashland Community hospital, where she was reported in good condition.

Buy At **Builders Supply**

QUALITY Chimneys **BLOCKS** Prestressed Concrete

727 W. McAndrews

PHONE 773-4573

WANTED! MEN - WOMEN

Prepare now for U. S. Civil Service job openings in this area during the next 12 months.

Government positions pay as high as \$446.00 a month to start. They provide much greater security than private employment and excellent opportunity for advancement. Many positions require little or no specialized education or experience.

But to get one of these jobs, you must pass a test. The competition is keen and in some cases only one out of five pass.

Lincoln Service helps thousands prepare for these tests every year. It is one of the largest and oldest privately owned schools of its kind and is not connected with the Government.

For FREE information on Government jobs, including list of positions and salaries, fill out coupon and mail at once—TODAY. You will also get full details on how you can prepare yourself for these tests.

Don't delay — ACT NOW!

LINCOLN SERVICE, Dept. 24
Pekin, Illinois

I am very much interested. Please send me absolutely FREE (1) A list of U. S. Government positions and salaries; (2) Information on how to qualify for a U. S. Government Job.

Name _____ Age _____
Street _____ Phone _____
City _____ State _____

MUTUAL FUNDS?

INVESTORS MUTUAL, INC.
INVESTORS STOCK FUND, INC.
INVESTORS INTER-CONTINENTAL FUND, LTD.
INVESTORS SELECTIVE FUND, INC.
INVESTORS VARIABLE PAYMENT FUND, INC.

INSURANCE?

INVESTORS SYNDICATE
LIFE INSURANCE AND ANNUITY COMPANY

FACE-AMOUNT CERTIFICATES?

INVESTORS SYNDICATE OF AMERICA, INC.

CALL YOUR **Investors man**

He represents INVESTORS Diversified Services, Inc., exclusive national distributor for the above mutual funds and "installment-type" face-amount certificates. He also offers life insurance through INVESTORS Syndicate Life.

For prospectus-booklets on any of these mutual funds, or on face-amount certificates, or for information on life insurance, call telephone number below. Or clip this complete advertisement, circling services which interest you, and mail it to your INVESTORS Man.

YOUR Investors men ARE

PAUL R. MOORE
Dist. Mgr.
1425 Whitman 772-6060

EDW. E. BERRIDGE
755 Stevens, Apt. 13 779-1051

G R. (Dick) TRITES
495 Ray Lane, Ashland 482-3396

ADVERTISER IN LIFE, POST, LOOK, READER'S DIGEST

Speaking of FLAVOR...

There's NOTHING Like BECK'S BUTTER-NUT Enriched Bread

Rich as Butter ... Sweet as a Nut!

New, Delightfully Different!

FRESHER THAN FRESH! That's Beck's brand new, tender, tasty BUTTER-NUT BREAD with a flavor that's out of this world! Just try one loaf and let YOUR family panel of experts pass judgment on this new SPUN LOAF from the master bakers at BECK'S. You'll SEE and TASTE the results of tender blending, tender care in baking. Ask for Beck's BUTTER-NUT ... your family will be happy you did!

LOOK FOR THE BRIGHT NEW YELLOW WRAPPER ON YOUR GROCER'S SHELVES!

Southern Oregon's Only Home-Owned Bakery