

San Francisco Now Prepared in Case of Another Earthquake

By DON MILLEN
United Press International
 San Francisco — (UPI) — Is the Golden Gate City prepared for another earthquake packing the force of the 1906 disaster?
 It certainly wasn't on April 18, 57 years ago when the San Andreas Fault lurched with a terrifying suddenness and caught San Franciscans in their beds.
 The city's entire business district, along with three-fifths of her houses and lodgings were either ripped by the quake or consumed in the fires which followed. His human toll was 542 dead, countless injured and more

than a quarter of a million homeless.
 Today the lesson has been well learned and San Francisco is braced, but the still active San Andreas Fault lies nearby, just missing San Francisco.
 The 1906 quake struck at 5:15 on a week day morning, when streets were empty and downtown businesses deserted.
Chilling Thought
 What if a similar quake struck at noon in the middle of the week?
 It is a chilling thought. Conservative estimates of injuries run as high as 18,000. No-

body wants to estimate the deaths which might occur.
 Karl V. Steinbrugge, noted structural engineer and secretary of the Seismological Society of America, points out that even if San Francisco was struck by an earthquake of the magnitude of 1906, its intensity would be much lower.
 "The magnitude is the power generated by the quake, but the intensity is its effect on manmade structures," he explained. "If you design structures in preparation for a quake of large magnitude, its intensity naturally will not be as great as its effect on haphazard building.

"San Francisco is in pretty good shape."
 Although the quake of 1906 toppled or damaged many buildings, it was the fire that caused most of the destruction when main water lines burst.
 Today tough building laws, rigid inspection and improved fire fighting methods have

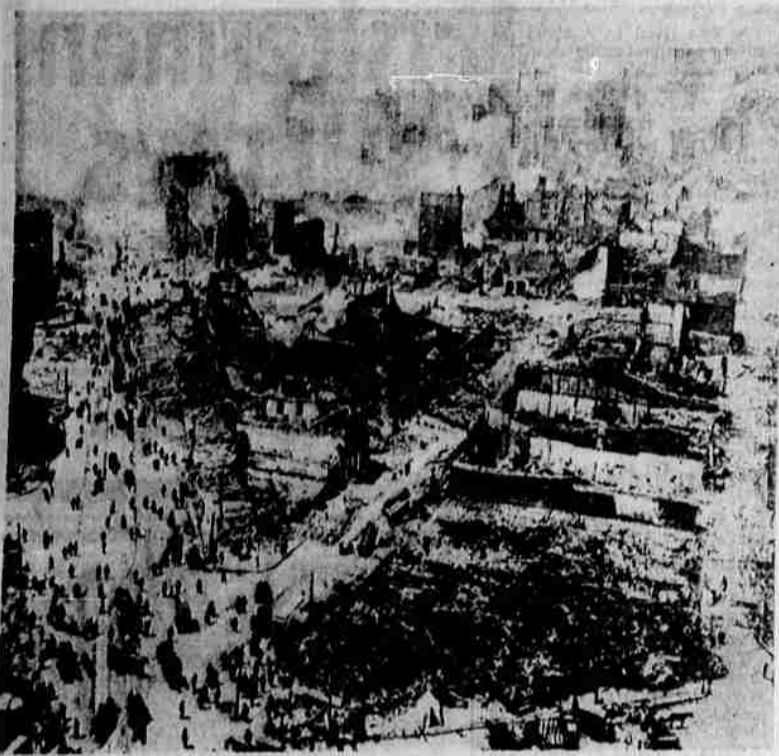
braced San Francisco against all but the strongest quakes.
 The city has duplicated its main water supply lines. One runs into town in an east-west direction, the other is laid north-south, in the event of ground shocks coming from one or the other direction. A complex system of water pipes and valves within the city

insure that water will not be cut off because of a break in any one line.
 In addition, dozens of cisterns containing thousands of gallons of water have been built under strategic intersections. Two huge pumping stations have been installed along the waterfront to pull water from the bay.

Gas lines have been laid using a similar plan, allowing gas to be cut off at any one of hundreds of valves, limiting the chance of a gas fire.
 What are the chances for another big earthquake?
 Nobody knows, really; but seismologists have discovered that the San Andreas Fault

has been building up tension since the '06 quake, and that the multitude of small tremors since then have done little to relieve it.
 Dr. Charles Richter, professor of seismology at the California Institute of Technology, has noted that San Franciscans, as well as other Californians along the great fault

system, "are going to have to learn to live with the threat of a great earthquake."
LOG ENDS
 Quick Delivery
MEDFORD FUEL CO.
 S & H Green Stamps
 PHONE 772-2111



AFTER QUAKE, FIRE—This is the view, 1906 earthquake and fire, which wiped out looking west up Market st., from the Ferry large sections of the city. (UPI) building tower in San Francisco after the



SAME DOWNTOWN AREA — Today the quake and fire, shows no remaining scars. Thursday was the 57th anniversary of the which was destroyed in the 1906 earth- disaster. (UPI)

PENNEY'S
 ALWAYS FIRST QUALITY
 OPEN MONDAY
 AND FRIDAY NIGHTS
 UNTIL 9 P.M.

COUNT ON PENNEY'S FOR THE BIG VALUES IN SUMMER WHITE GOODS!

BIG VALUE!
COTTON MUSLIN SHEETS, CASES!

twin 72"x108"
 twin fitted bottom sheet
 full 81"x108 full fitted
 bottom sheet 1.68

1.54

cases 42"x36" 2 for 75c

Count on Penney's for thrifty buys! These are durable, firmly woven cotton muslins at prices you'll find hard to match. Hurry!

SUPER-VALUE! TUFTED SPREADS, FRINGED!

2 for \$5
 Twin or Full

You'd think these thickly tufted spreads a good buy with plain edges, but Penney's adds rich bullion fringe for fabulous value! And they come in such lovely colors as blue, white, shocking pink, bonfire red, beige.

THIRSTY BATH TOWELS BUYS AT THIS PRICE!

24 x 46 **2 for 1.00**

hand towel 3 for 1.00
 wash cloth 6 for 1.00

Extra large, 24" x 46", deep soft cotton terry in luscious new fashion colors. Stock your linen closet at big savings.

NEW!

It slips over mattress with a gentle touch!
 It pulls itself in snuggler than old-style fitted sheets!
 It lies so smooth and stays so smooth!
 It fits itself to every standard inner-spring mattress, regular or extra firm!
 every way better than old-style fitteds...

AND IT DOESN'T COST A CENT MORE!

Penney's ELASTA-FIT
 the bottom sheet that almost makes the bed by itself!

Nation-Wide® white cotton muslin
 twin **ELASTA-FIT** 1.79
 full bed **ELASTA-FIT** 1.98

Pencale® white cotton percale
 twin **ELASTA-FIT** 2.19
 full bed **ELASTA-FIT** 2.39

Any woman who's tugged and struggled and broken a fingernail pulling a fitted sheet over a stubborn mattress corner will cheer Penney's new ELASTA-FIT bottom sheet! See how gently it slips over your mattress... you hardly have to lift it all... see how it pulls itself in, adjusts and fits so snug, stays so smooth... so much better than old-style fitteds! A new corner design plus elastic does the trick! Washes just like any sheet—count on Penney's to lab-test thoroughly! And it comes in all Penney's famous qualities!

Speech Contest Set by Knights

The 18th annual public speaking contest for senior high school students sponsored internationally by the Supreme Lodge Knights of Pythias and in Jackson county by Talisman Lodge 31 will be held in the Pythian building, Fifth and Grape sts., Medford, at 8 p.m. Tuesday, April 23.

Contestants from Central Point, Eagle Point, Ashland, Phoenix and Medford will participate. First, second and third place prizes will be awarded, and the winner will compete with the first place winner of Josephine county in Medford Tuesday, April 30. The winner of the southern

Oregon contest will enter state competition in Portland. The state winner will compete in the regional contest, Spokane, and the Spokane winner will compete in the finals at Cleveland, Ohio, in August.

Scholarships totaling \$3,500 for any college or university will be awarded winners of the six sections.

The subject to be discussed this year is "Rights and Responsibilities." The event is open to seniors of parochial and public high schools. The National Association of Secondary School Principals has placed the contest on the approved list.

CONTINENTAL TRAILWAYS TOURS

This is the best way for vacation travel!

Let Continental Trailways Tours, Inc. "pleasure-plan" your vacation. Continental Trailways takes care of all the details in advance—hotel reservations, baggage, sightseeing... you just relax aboard an air-conditioned, rest room equipped luxury bus... and enjoy a carefree-carefree vacation. One low cost price... one phone call to your local Continental Trailways Tours, Inc. Agent is all it takes!

773-1853—148 No. Front

LOANS UP TO \$1500

Here it is—a **HANDY HUNDRED or More!**
 Call Crater Finance

"Money From Crater Finance Is Like Money From Home"

CRATER FINANCE
 135 PINE CENTRAL POINT 664-1273

Hurry!
 shop early for best selections!

50% OFF ON ALL ADVANCE PATTERNS

• Spring Summer Fashion!
 • "Sew-Easy" Styles!

• dresses, suits, coats, sportswear!
 • teens' and children's styles!

SAVE ON PILLOW PAIRS!

KING-SIZE KAPOK! 2 for \$4
 Big 22" x 28" king size 26 oz. Kapok. Corded cotton tick in stripe, floral.

FOAM RUBBER! 2 for \$6
 Fabulous buy on firm cushiony comfort foam rubber. Popular 17" x 25" size.

POLYESTER! 2 for \$6
 Fluffy, resilient virgin polyester fiberfill... a full 20 ounce pillow.

Hall or stair runners

Terrific value... rayon tweed pile runners, foam backed for comfort... perfect floor protector for hallways, stairs, heavy traffic areas on other rugs. Light fawn, grey, multi-stripe, light green, or maize.

2.88
 24"x144" \$4.88 24"x72"