

Beautiful Frame for House Created by Proper Planting

You can make and enjoy a garden that's a beautiful frame for your home with a little patience, a lot of enthusiasm and these few pointers. Don't plant too deep. Small flower or vegetable seeds only need to be covered. When reseeding bare patches in your lawn, loosen two inches of soil fertilizer and sow. Too much fertilizer is much worse than using too little, so follow directions on

the package of a reliable manufacturer. Overwatering washes nutrients out of the soil and helps spread fungi. Let your turf dry almost to the wilting point between waterings, and then soak it to a depth of six inches. You might consider a corrosion resistant galvanized steel sprinkler, which will give you many years of service. Its great advantage is that it furnishes water only

as fast as the ground can absorb it. **Set Mower** Mow your lawn, but don't "scalp" it. Set your mower at one and a half inches high; mow whenever the grass gets over two inches. If mower blades get dull, they'll split the grass tops, causing them to turn brown. The blades should be made of high carbon or alloy steel which makes them rugged — so

they won't chip when they hit a rock — and hard, so that when the blades are sharpened, they will stay sharp for a long time. Once a year have the blades removed, ground and balanced. Buy good garden tools so they won't have to be replaced periodically. Steel tools are lightweight, easily manipulated, and give long, dependable service. A good basic tool set includes a spade or shovel, spading fork, rake,

hoe, cultivator, shears, trowel, sprayer or duster for plant leaves, water can, cords and stakes for vines, and a heavy and light pair of gloves. Never leave lawn and garden tools outdoors. If you don't have a definite storage space for the smaller items, put up a convenient steel cabinet to store them out of the way. Be sure to wash and dry your tools after using them. They'll look better and last longer.

Weeds and insects control should start before their invasion. All-purpose sprays and dusts will control most flower and vegetable diseases and insects if applied early and according to directions. When a family finds itself lacking enough space around the house for its normal activities, there are just two answers. One is to move to a bigger house and the other is to find more space in the present home.

Fun in the Sun Stirs Interest in Planting

A great new era of robust indoor - outdoor living will contribute more physical fitness and family pleasure through gardening, is predicted by the American Association of Nurserymen. The indoor - outdoor living concept has grown steadily in the past decade, but it is expected to grow far more rapidly in the next few years. Total sales of trees and shrubs have hit a new peak every year for the past 15 years and still are increasing. More indoor - outdoor living today is getting more people outdoors with healthful results. **End Drabness** Expert planting and landscaping will bring an end to the drabness of much present-day housing, in which the land is not conserved with

designed - for - living plantings. "This new indoor - outdoor living will make home life so rich and attractive that people will spend much more of their incomes on their home properties rather than spending on things that take them away from home, often without any lasting benefits," the nursery group states. "To maintain housing values, to prevent the ruinous waste of some housing developments which degenerate into slums in 10 or 12 years, housing must be planned so the whole residential area, including the land, will remain beautiful and well-served for the longest possible time. When the land is not improved for living by proper planning and planting, home values depreciate at much faster rates. The indoor - outdoor concept conserves the land as well as the house and uses both for wholesome living. **Conserve Land**

"It is, however, more than increasing property values," the association adds, "it is full realization that we cannot continue to move to new housing developments forever — there is not enough land available. Now is the time when we must conserve all lands, especially in and surrounding urban areas. "Much can be accomplished by planning housing for more permanent values and better living," it is stated. "The indoor-outdoor idea helps greatly in accomplishing this. Moreover, it is the most satisfying and healthful way to live for practically everyone, with more wholesome family fun, as well as more physical fitness through the gardening effort, which, the association concludes, "does more for the gardener than it does for the plants."



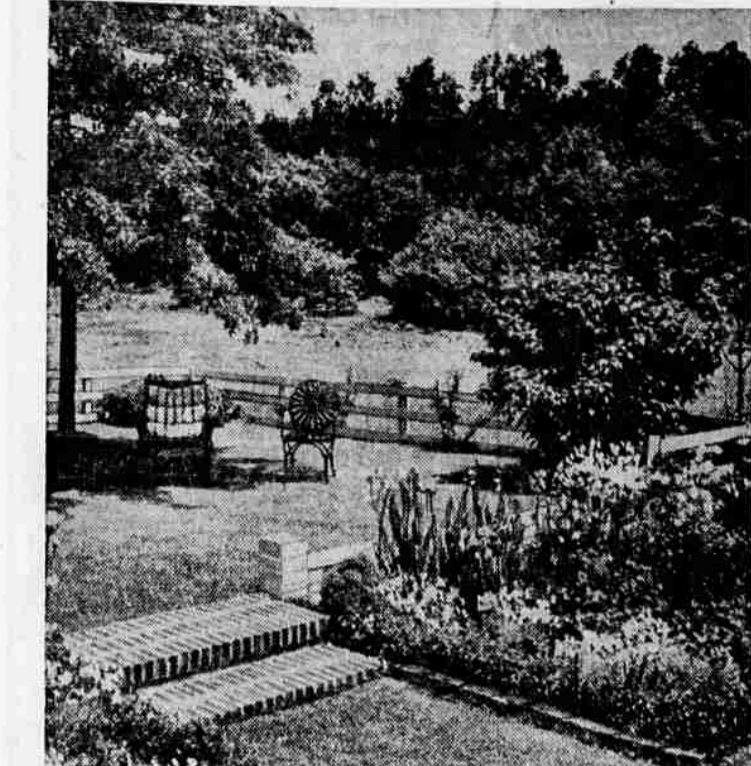
Caron Freshener

A refreshing travel-size lotion in three famous fragrances: Bellodgia, Fleurs de Rocaille, Nuit de Noel in golden container—\$2.50 each

"The Woman you remember wears Caron"

HUDSON'S PHARMACY

613 E. Main • 772-3245
Open Weekdays 8:30 am-10 pm
Sundays & Holidays 10 am-9 pm



VISTA—An outdoor living room, planned for comfort, color, and beauty, creates a lovely vista of flowers, shrubs, lawn and trees. Careful blending of harmonious colors and textures result in a wonderfully pleasant background for better living, says the American Association of Nurserymen.



WEAR GLOVES—Play it safe in the garden! Wear protective gloves to avoid scratches, thorns, contact with poison ivy or noxious sprays. After gardening always wash with a germicidal soap to reduce the possibility of infection.

Plant With a Purpose Enjoy Garden Living

Landscape your house and yard with definite ideas in mind. Plant with a purpose: trees for shade, screens, or accents of color and form; shrubs and evergreens to enhance the architectural lines of the house.

Gardens and shrub borders should be planned and not scattered hither and yon about the property. Notice other houses you pass by. Some will have a quiet charm, others stand out disturbingly. The architecture may be equally good, but plants and the manner in which they are used make the difference. **Difficult**

It is more difficult to plant the contemporary house with its long low lines, than the conventional house. Do not destroy the lines your architect has created, or chop up the house into bits and sections by overuse of conical evergreens.

New Refrigerator In Old House Planning

There's a right place and plenty of space for every kind of food in a modern electric refrigerator - freezer. A 1963 model can provide far more food storage space than an older unit without occupying any more floor area. **Thin Design**

Thinner, more efficient insulation and better engineering are responsible for adding cubic footage inside the new electric refrigerator - freezers without gobbling up valuable kitchen floor space. Thinner walls, squared - off corners, and doors that open within the width of the new units all contribute to their "space age" qualities. **Freezer sections** in which frost never forms mean more food storage space, too. Today's electric refrigerator - freezers all have a sleek, built-in look with a decided contemporary flavor. Kits are also available with some models for an actual built-in installation.

Remodel Kitchen, Get Better Price

Changing an old-fashioned kitchen into an attractive, efficient home-making center will make an older home a far pleasanter place in which to live, work and entertain. It will also increase the resale value of the house if the time should come to move. **Remodeling the kitchen** will make it possible to install a built - in electric range, which gives a distinctly contemporary look while saving the homemaker the anguish of watching, probing, and guessing that goes with cooking on an out-of-date stove. **Wide Choice**

The variety of automatic electric built-in cooking units available today gives a wide choice of kitchen arrangement. The baking center can be separated from the surface-cooking area, and extra surface units can be built into a snack section for teen-age refrigerator raids and grown-up guest nights.

Plan Before You Start on Project

Before you tackle any "ambitious", professional - type project for home improvement, be sure you have the proper know-how and equipment. Then, make a complete layout before you start, think it out in detail on paper before you get under way. Also, be sure the materials are available and fully satisfactory or adequate. **Some of the pitfalls** to be avoided are these:

Be sure you put appliances where they are accessible; and similarly, make certain that your completed project will not render some already-installed appliance valueless. A heater in the wrong location is worthless; a fireplace improperly designed may not work; a floor that isn't built right will be "bouncy."

When you're buying appliances, electrical goods, wiring, etc., be sure they meet legal requirements. Salesmen's advice is not to be relied on and illegal equipment is sold in unethical stores. **Check City**

For your own peace of mind, it is well to check with the city inspector on such equipment. Never conceal work requiring inspection and never put any appliance, wiring, plumbing, etc., into use until the job is approved by the city inspector. These men want to help people who do their own work and will give advice and instructions.

OPEN EVERY FRIDAY UNTIL 9 P.M.

PEAR BLOSSOM SPECIALS

FROM

ROBINSON BROS.

SPRING JACKETS
Regular 8.98 to 22.95
5⁹⁹ to 16⁹⁹

Lightweight Wool
LEISURE COATS
Reg. 15.98 Reg. 23.95
11⁹⁹ 16⁹⁹

WHITE SHIRTS
Cool Air Weave—Long Sleeved
Regular 5.00
NOW 3⁴⁹

Festival Bargains
From Our **BOYS' DEPT.**
Odds and Ends
• JACKETS
• SWEATERS
• COTTON SHIRTS
Long and Short Sleeved

BLOSSOM TIME is...

BARGAIN TIME

DON'T MISS THESE BIG PEAR BLOSSOM SPECIALS!

MORE THAN 500 PAIR HEELS, FLATS and CASUALS UP TO 25% OFF

HEELS Reg. to 13.99 7⁹⁰ and 9⁹⁰	FLATS and CASUALS Reg. to 7.99 NOW 4⁹⁰ and 5⁹⁰
--	--

All Colors and a Wide Selection of Finishes

Pick's SHOES
102 East Main Street

Pick's APPAREL
112 East Main Street
Next Door to Robinson Bros.

Oh, Yes S-T-R-E-T-C-H PANTS and CUT-OFFS

A large selection in all sizes and colors... and most wanted styles.

Pick's APPAREL
112 East Main Street
Next Door to Robinson Bros.

White Stag
THE CAPTAIN'S SHIRT and SAILCLOTH SOUTHAMPTONS

Dazzle your crew with

White Stag

Choose this stand-out pullover in a cargo of new Windjammer colors brilliantly striped on white combed cotton lisle knit. It features an easy bateau neckline, short sleeves...pulls down low over slim, shapely White Stag Southamptons in virtually carefree Wellington Sears Sanforized-Plus® sailcloth. Multi-stitched waistband with side zipper and pocket.

ROBINSON BROS.
Everything for Men and Boys
Next to Pick's Apparel Downtown Medford

Don't Miss The Big Parade Saturday!

Park Shop
Convenient parking makes it so easy to visit Robinson Bros., Pick's and other downtown Medford stores and shops. USE THEM... they're FREE when you shop DOWNTOWN IN MEDFORD.