



TRAPPED BY BELL—This is not a bell ringer who got too close to his work, nor is it a walking bell. The one-tone bronze bell was lowered from a steeple of the 86-year-old First Methodist church at Oconomowoc, Wis. and the worker went inside the bell to remove its clapper before loading it aboard a truck. The church was razed to make room for a new church, in which the old bell will be used. (UPI)

Oregon Supreme Court Decisions

Salem — (UPI) — The Oregon Supreme Court upheld the city of Corvallis Wednesday in a zoning dispute.

It reversed Benton County Judge Fred McHenry, who had ruled in favor of the Witham Hill corporation and Harold S. Whiteside, who had sought to void zoning amendments adopted by the city in 1959 and 1961.

Whiteside had bought 67 acres of land in Corvallis in 1952, developing 51 for residential purposes.

The corporation planned to use the remaining 16 for a shopping center and parking. In 1953, Corvallis adopted a comprehensive zoning ordinance by which all but 3.2 acres of the land was zoned for one family residences. The rest was specifically zoned for commercial use.

Code Amended
The corporation contended the ordinance still allowed it to use the rest of the 16 acres for parking. In 1959 and 1961, the city amended the code, specifically prohibiting use of the rest of the 16 acres for parking.

The Supreme Court held that the lower court erred when it interpreted the 1933

ordinance as permitting public parking in the area in question.

The high court said parts of the 1933 code permitting buildings such as schools and churches in the residential area did not include commercial parking.

The Supreme Court upheld Deschutes county Judge Robert Foley in a ruling setting aside a special assessment levied by the city of Bend against Harry L. Boyle.

The city levied the assessment for improvements to highway 97 along East Third st. in Bend.

Benefit Said Lacking
Boyle and the other plaintiffs complained that their property was not benefited, but in fact harmed.

The city contended that the circuit court had no jurisdiction.

The Supreme Court said a group singled out for special tax treatment is entitled to procedural safeguards. It said the "imposition of a special assessment upon property which is not specifically benefited . . . unjustly deprives the owner of a property interest."

"The question of whether his property is benefited is therefore vital and the procedure by which that question is determined is equally vital," the court said.

"The courts have power to set aside a special assessment which is arbitrarily imposed upon property not benefited."

The Supreme Court affirmed an order for a new trial in a case of battery and assault allegedly committed by a Hood River policeman.

A Multnomah county jury had found in favor of the policeman, but the trial court granted plaintiff James Rich a new trial.

The high court agreed that evidence concerning Rich's temperament should not have been admitted to the jury. **Judgment Modified**

The Supreme Court modified a judgment of the Polk county Circuit Court giving James L. Blacker a five-year enhanced penalty. The high court set aside the extra five-year term.

The Supreme Court affirmed a Washington county ruling against Callie B. Heider in a suit denying strict foreclosure of a land sale contract.

In a case from Washington county, the Supreme Court reversed the manslaughter conviction of Evelyn B. Flett and ordered a new trial.

Mrs. Flett was convicted of stabbing her husband with a paring knife during a drunken quarrel. The high court said testimony on alleged infidelities "at times more or less remote from the time of the murder" should have been excluded.

The Supreme Court affirmed a \$10,059 judgment recovered by M. J. Martin for automobile injuries in a case from Clackamas county.

It also affirmed a ruling in favor of the Jolly Joan corporation in a dispute with Sunshine Dairy over a bill.

Grange News

Central Point Grange
Juan Canada, American Field Service exchange student at Crater High school, spoke preceding a meeting of the Central Point Grange recently.

He described the industry, educational program, government, scenery and the people of Spain.

The business session was opened with the officer's seating drill. All officer's were present. Reports of standing committees were given by the committee chairman.

Mrs. Morris Frink announced the next meeting of the HEC club will be held Wednesday, April 24, at the home of Mrs. Charles Jantzer on Beal Lane. Delmar and Frieda Smith exhibited varieties of daffodils, and flowering shrubs on the display table.

The next Grange visitation will be held April 11, with Griffin Creek Grange in the school gym. April 19 the visitation will be at Roxy Ann Ann Grange. The Central Point ladies degree team will confer the first and second degrees at Bellview Grange May 7.

Mrs. Morris Frink has been named chairman in the Central Point Grange for the Death Benefit Insurance. Any member wishing information may call her.

Announcement of the Odd Fellows Pancake breakfast on April 21, was made by Marshall Weidman.

The serving committee for the evening included Mr. and Mrs. Elmer Olson, Mr. and Mrs. William Fisher, and Ben Ekholm.

The U. S. department of agriculture reports about the same amount of eggs will be available in 1963 as in 1962.



BEAUTIFUL, FRAGRANT, FRESH CUT ORCHID CORSAGES

REAL HAWAIIAN VARIETY
NORMALLY SELLING AT \$5.00 EACH
EASTER SPECIAL ONLY

\$1

Available at All Oregon Food Stores While the Supply Lasts!

SUGAR

Brown and Powdered
C&H Brand

Lb. **10^c**

SALAD OIL

Western Chef

QUART **39^c**

ICE CREAM

DUTCH QUEEN
Finest Quality

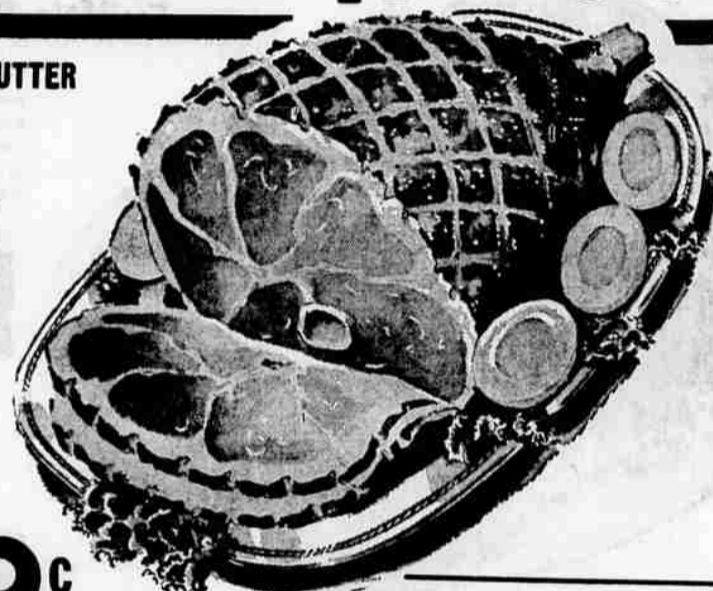
HALF GALLON **69^c**

MORRELL'S PRIDE -- FULLY COOKED -- TENDER AS BUTTER

You Cannot Buy A Finer Flavored Ham — Lightweight — 12-14 LB. AVERAGE

EASTER HAM Shank Portion lb. **37^c**

WHOLE HAMS 45c lb. BUTT HALF 49c lb.



WHOLE BODIED—IMMACULATELY DRESSED, PLUMP, YOUNG BEAUTIES

FRESH FRYERS 29^c lb

5 FULL POUNDS OF WASTE-FREE EATING — SWIFT PREMIUM

CANNED HAM \$3²⁹

FOR THE SMALL FAMILY—READY-TO-EAT—NO BONE—NO SKIN—NO WASTE—SWIFT PREMIUM

CANNED PICNICS 3^{LC} \$1⁵⁹

BEAUTIFUL BIRDS—YOU CAN'T BUY BETTER—OVEN READY YOUNG A GRADE

HEN TURKEYS 37^c lb

MORRELLS PALACE BRAND—WELL STREAKED WITH LEAN

Thin Sliced Bacon 2^{LS} 79^c

EASTER BREAKFAST FAVORITE
CENTER CUT

HAM SLICES

Fully Cooked
Tender-Flavorful.. **79^c lb**

Oregon Food Store's Famous Close-Trim
Gives You Assurance of Value

CENTER CUT
PORK CHOPS

From the
Midwest
Cornbelt **49^c lb**

Country Style
SPARERIBS

Lots and Lots of
Lean Meat

39^c lb

Pork Loin Roast

Cut from the
Tender-loin End

45^c lb

Whole Pork Loins

Cut and Wrapped FREE
For Your Freezer

45^c lb

Country Style
Pork Sausage

Our Own Make

3^{LS} 98^c

CLOSED EASTER SUNDAY

MEDFORD—Westgate Center
MEDFORD—13th and Central
ASHLAND—Gateway Shop. Center

We Reserve The Right To Limit.
Prices Effective thru Saturday, April 13

Oregon FOOD STORES

WESTGATE BAKERY ONLY!

CAKE DONUTS Cinnamon—Sugar Coated DOZEN **49^c**

EASTER CAKES Decorated 7 inch **99^c**

Cherry-Nut
RAISIN BREAD
EASTER SPECIAL
15 oz. **35^c**

POTATO ROLLS
Dozen **25^c**

HOTCROSS BUNS
In Foil Pan
8 for 39^c