

### Fire Extinguished In K. F. Hospital

Klamath Falls - (UPI) - Fire broke out in an empty room on the second floor of the Hillside hospital here Wednesday but was quickly put out.

Fire Chief Geno Gheller said the state arson squad would investigate its cause.

When firemen arrived nurses were throwing water on the blaze and a doctor was manning a fire extinguisher. Two nurses sounded the alarm.

There were about 42 patients in the hospital at the time.

### Man and Space

## 68-Foot Walkway Will Lead Spacemen Toward Moon Trip

By ALVIN B. WEBB JR. Cape Canaveral - (UPI) - The time is early morning. On a towering platform stand three men, their silvery suits sparkling in the chill glow of brilliant spotlights. Ahead of them is a metal walkway.

"T-minus-240 minutes and counting!" the stark monotone voice from the countdown box never seems to change, no matter what the day or the occasion. The figures on the platform move.

The walkway is 68 feet long. For the three men now

striding across, it becomes that "longest walk" when the mind fills with thoughts titanic and trivial, rolling one upon another.

Simply add the eerie background music, and the entire scene will be breathtaking. The 68-foot walkway will lead into the top of the Saturn-5 towering more than 300 feet above the ground - a rocket so tall that four Atlas missiles stacked one upon the other could not reach its top.

The monstrous Saturn-5 is the very symbol of the man-

to-the-moon project. There is nothing small about Project Apollo.

There is the cost - at least \$20 billion. About 10 times the cost of the World War II crash program to build the first atomic bomb.

There is the manpower that the federal space agency's Rocco Petrone, one of the sharpest men in the business, said would involve "the most extensive concentration of the nation's scientific and technical talent ever devoted to a single undertaking."

And there is the gigantic dream itself now beginning to take on reality amid the swamps and sands and scrub brush on the north and east edges of Cape Canaveral - the launching facilities for the moonflights.

**Everything Superlative**

Nearly everything will be figuratively and physically a superlative. Petrone, in one of the most detailed outlines ever presented of the Apollo launch operations plan, describes some of the more immense:

The vertical assembly building, where the Saturn-5 will be put together, will rise 524 feet, far and away the tallest building in Florida if not in the southern United States.

-An umbilical tower, 350 feet tall, for servicing the rocket and Apollo capsule will make earlier towers look like matchsticks.

-A crawler - transporter weighing 5 1/2 million pounds and driven by two diesel generators providing 5,600 horsepower will carry the entire rocket from the assembly building to the firing area at a top speed of one mile per hour.

When the astronauts reach the end of that walkway, they will step aboard the most powerful piece of space machinery ever built. It will be filled with liquid oxygen and hydrogen, high-grade kerosene and nitrogen tetroxide - all explosive.

**Short Time Away**

The Saturn-5 will leave the ground with about 5.4 million pounds of fuel aboard - enough to blow a good-sized hole in Cape Canaveral or anywhere else.

The unsung part of America's program to put men on the moon is the part that will stay right here on the ground. The engineering that must go into it puts the Egyptian pyramids, Hoover dam, and ear-



**COUPLE SEPARATES** - Singer Bobby Darin and actress Sandra Dee, one of Hollywood's youngest and most publicized couples, have separated. Rumors have been circulating that the couple, both with highly successful careers, were on the verge of splitting up. Darin, 26, and Miss Dee, 20, were married Dec. 1, 1960, and have one child. (UPI)

### Canadian Boxcars Available in West

Washington - (UPI) - Sen. Warren Magnuson (D-Wash.) reported today arrangements have been made with the Canadian Pacific railroad to provide 2,000 to 4,000 boxcars to relieve a shortage west of the Mississippi.

Magnuson, chairman of the Senate Commerce committee, said the boxcars were obtained through the cooperation of the railroad, the Interstate Commerce commission, the Bureau of Customs and the Association of American Railroads.

The cars will be used mainly to ship lumber east, and will be available for the next six to eight weeks, Magnuson said. They are currently in surplus in Canada.

The senator said the cars can only be loaded west of the Mississippi but they can be shipped to any point in the United States.

Cattle on high grain or high concentrate rations eat less salt than do those on high roughage rations. That's because the grain contains sodium and chlorine, the same elements found in salt. Even so, it's wise to offer animals salt on a free-choice basis to be sure they are getting all they need.

### Giustina To Close Mill at Eugene

Eugene - (UPI) - Giustina Bros. Lumber Co. said it would permanently shut down its main sawmill at the close of business Friday.

About 35 men will be affected, Ehrman Giustina, a partner, said some of them would be absorbed into the firm's plywood plant and stud mill, but the most of them would be laid off.

Canadian competition was cited as the principal reason for the closure. The firm also said property taxes, obsolescence and costly changes required to meet an air pollution ordinance were contributing factors.

The mill was built in 1939.

there's only one

**SKIPPY**

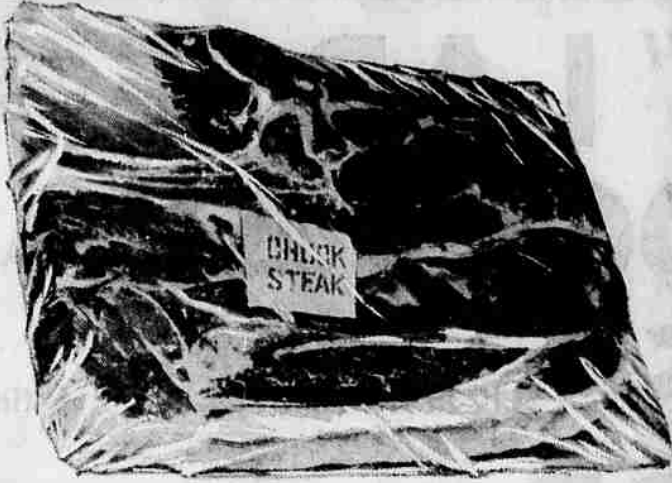
DOG AND CAT FOOD

**TOPS IN QUALITY! LOW IN PRICE**

## PIGGLY WIGGLY

# CHUCK STEAK

U.S.D.A. choice lean beef chuck steak... marinate or season with Adolph's Tenderizer for added flavor and tenderness.



# 49

lb.

- SWIFT'S SWEET RASHER Sliced Bacon 1-lb. pkg. 49c
- Tillamook Cheese lb. 69c
- Buddigs Beef or Ham 39c pkg. 3/1.00
- SWIFT'S PREMIUM Luncheon Meats Bologna, Olive, Pickle Pimiento and Salami..... pkg. 29c

Rogus Maid Vanilla, Chocolate or Strawberry

# 59c

HALF GALLON

# 5 TINS \$1.00

## Campbell's SOUP ALL VARIETIES



10 1/2-oz. Tins

# 7 TINS 1.00

## Everfresh FROZEN VEGETABLES

10-Oz. Pkg. Peas, Cut Corn, Peas and Carrots or Squash

# 6 PK 89c

# 3 14-oz. bottles 50c

# 4 6-oz. tins 1.00

## CORN Dundee Fancy Cream Style or Whole Kernel

# 6 No. 303 tins 89c



## Hudson House FANCY PINEAPPLE

Crushed, Chunk or Tidbits... Mix or Match No. 211 Tin

# 5 TINS 1.00

Chase and Sanborn

# COFFEE

lb. 49c 2-lb. Tin 97c

Save on Swift's

# SHORTENING

for Better Baking

# 3 lb. tin 59c



## Piggly Wiggly

Save as You Spend With S&H GREEN STAMPS

Stewart at King Streets Prices Effective March 28, 29 and 30 Limit Rights Reserved

OPEN DAILY UNTIL 9 P.M.

### A MAYTAG AUTOMATIC WASHER GIVES YOU THE TWO THINGS YOU WANT MOST



1. Advanced features
2. Proven dependability

8 wash cycles - 2 speeds for wash and rinse - 3 water temperatures and 3 water levels.



Before you put your good money into an automatic, look into a Maytag. For Maytag offers you all the latest (and really helpful) features plus the one that makes them work - Maytag dependability. And they'll work the way you want them to - all day, every day if need be.

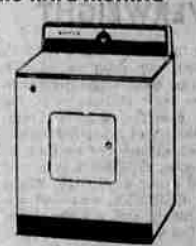
And every Maytag, regardless of price, includes all these bonus features:

- Safety Lid stops action in seconds when opened.
- Porcelain Tub and Top.
- Zinc-Coated Steel Cabinet that protects against rust.
- Perforated tub with Swirl-Away Draining Action. Dirt goes out the holes, never strains through clothes.
- Unbalanced load Safety Switch.

There's a Maytag Model and Maytag Price that's just right for you

### NEW ELECTRONIC CONTROL DRYER FOR WOMEN WHO HATE IRONING

This new Maytag Dryer with Electronic Control feels the clothes for you and shuts itself off before wrinkles are baked in. And on wash and wears, the only thing you'll ever have to press is the button that starts the dryer!



## MAYTAG the dependable automatics

# LARSON APPLIANCE CO.

406 East Main

"Medford's Home Laundry Specialists"

Phone 772-5302