

**INVOLVES NEW CONCEPT**—This building, which houses the Bundy Art Gallery, incorporates five levels in a helix through which space flows freely from one area to another. The 22-foot ceiling in the main gallery allows the largest paintings to be properly hung. The east and west ends of the building are glass, making the Vermont landscape an integral part of the museum. The direct sunlight from the west is controlled by 17-foot rotating vertical louvers. The main gallery floor is rough grey Vermont slate. The walls inside and out are sand-colored Norman brick.

## Bundy Art Gallery Sets Sculpture Competition

The Bundy Art Gallery, a new contemporary art museum in Waitsfield, Vt., designed by Harlow Carpenter, formerly of Jackson County, has announced its first sculpture competition to be open to all professional sculptors, with no invited works.

The gallery, opened in October, 1952, represents a unique concept in the history of museums. The modern glass, brick and copper building rises beside a lagoon and is surrounded by 80 acres of lawns and gladed areas planned as a sculpture park.

**Sponsors Voice Hope**

Sponsors of the show have voiced the hope that it will reflect what is best in the contemporary field and provide an opportunity for exhibiting new talents as well as those already recognized. The preliminary selection of pieces to be considered by the judges will be made from photographs which must be submitted by April 29.

H. H. Arnason, vice president for Art Administration at the Solomon R. Guggenheim Foundation, Robert Goldwater, director of the Museum of Primitive Art in New York, and Mirko, resident sculptor at the Carpenter Visual Arts Center of Harvard university, will select the work to be shown and award the prize money of \$3,300. The show will be on exhibit during June, July and August.

**Started by Carpenter**

The museum collection was started by Carpenter, now director of the museum, before he graduated from the Harvard school of design in 1936. It includes works by Airo, Grillo, Marca-Relli, Mathieu, Nevelson, Resnick and Soulages, and many others. Some of the artists represented are less known, but Carpenter believes that the artistic merit of their work will be recognized.

The Carpenter family has long been interested in the arts. Carpenter's parents, Alfred S. V. Carpenter of Medford, and the late Helen Bundy Carpenter, donated the funds for the Visual Arts Center at Harvard university, which was designed by Le Corbusier.

### Beekman Home Nets \$295 in Operation

Operation of the C. C. Beekman home in Jacksonville as a tourist attraction netted \$295.66 for the period May 21, 1962, to Feb. 28, 1963, according to a report from the Siskiyou Pioneer Sites Foundation.

The annual report was made to the Jackson county court in response to a request from the University of Oregon business manager asking for such a report. The early day banker's home is leased from the University of Oregon through the county court.

Total admissions to the home from May 21 through Feb. 28 were 5,960 persons including children, students and adults. Peak period was August with 2,396 people visiting the home. July ranked second with 1,234 visitors. Smallest attendance was 14 in October.



**HOT WATER on tap for all the family!**

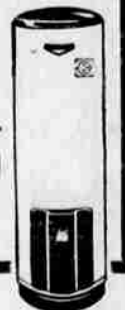
when you have a **GAS WATER HEATER**

**\$30 TRADE-IN ALLOWANCE**

for your old water heater on a new "DAY & NIGHT" Glass Lined Water Heater, Guaranteed 10 Years.

Regular Price **\$87.50**  
Less Trade-in Allowance **\$30.00**

**YOU PAY ONLY \$57<sup>50</sup>**



This offer is available also thru your plumber

Live modern...for less...with **GAS**

**CALIFORNIA-PACIFIC UTILITIES COMPANY**  
YOUR PARTNER IN WESTERN PROGRESS  
Phone 772-5281, Medford 482-2116, Ashland

**NO MONEY DOWN ON CREDIT AT WARDS—JUST SAY "CHARGE IT!"**



### NYLON LYCRA®

REGULAR 5.98  
CAROL BRENT  
PANTY GIRDLE

**4<sup>88</sup>**

Save 1.10! Discover the new lightness, new strength. Nylon and soft, strong machine washable Lycra® Spandex. S-M-L-XL.

Reg. 1.98 bra. Lightly padded, contour stitched cotton. Sizes 32-34A, 32-38B 1.48



**SAVE 20%**  
GIRLS' 2-PIECE SHIRTWAIST STYLE IN LOLLIPOP PASTELS

**\$4** REG. 4.98

Delightful fashion to win a young girl's heart, winning price to fit into the family budget! Wards shirtwaist 2-piecer has roll-up sleeves, full sweep skirt. Made of famous Wamsutta combed cotton... so pretty in pastels. 7-14.



**SPECIAL!**  
IMAGINE! COATS IN FAMOUS FORSTMANN, HOCKANUM WOOL

**23<sup>90</sup>**

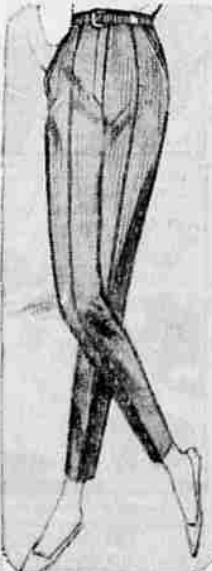
Wards early-Spring special... an important collection of silhouettes and Easter-Parade pastels. 'Expensive-look' tailoring, all lined in sleek smooth satin. Shows: 3-button basket weave wool fashion. Misses sizes 12 to 20.

### COTTON PANTS

REGULAR 3.98  
SOLIDS, PLAIDS,  
STRIPES, COLORS

**\$3**

Looking for sleek fit in slim line pants? Wards has a huge group of fine cotton styles... easy-care and easy on your budget. Some with self-belts, side pockets, side zippers. Some with adjustable waist bands. Hurry! Don't miss this buy! Misses sizes 10-18.



REG. 3.99 NYLON "JEWEL" SLIPS

**2<sup>99</sup>**

Save \$1 on Wards famous "jewel - of - a slip". Proportioned, shadow-paneled, embroidered. Fashion shades. 32 to 40.



WOMEN'S BRIEFS REG. 69¢ SNUG

**2 for \$1**

Stock up! Wards run-proof acetate briefs fit comfortably, smoothly. Elastic leg style. White. 34-42 hips.

### SUPIMA® COTTON

REGULAR 3.98  
GOLDEN BRENT  
DRESS SHIRTS

**3 for \$10**

SIZES 14 1/2 TO 17

Stock up on short sleeve dress shirts at big Wards savings! Tailored of 100% Supima, world's finest cotton, in your choice of classic spread, neat snap-tab or popular button-down model. Automatic wash 'n wear, too. Machine wash... drip, tumble or even SPIN dry.



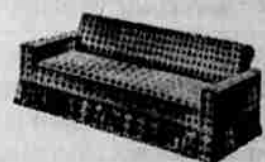
**SAVE '2**  
Regular 7.99 men's dress oxfords

only **5<sup>99</sup>**

Handsome dress shoes of rich top grain leather. All feature leather linings, long wearing leather soles. Black, Brown. Men's sizes. See 'em now!



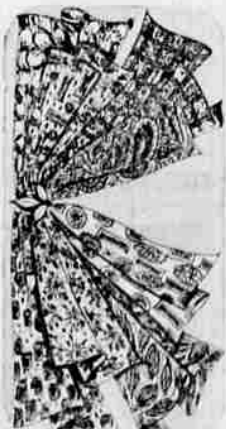
Special Assortment  
**DAVENO COVERS**



ONLY **9<sup>99</sup>**

Reg. Value to 24.98

• Choice of decorator colors.  
• Huge assortment of patterns, fabrics.



REG. 2 YDS. 1.38  
COTTON PRINTS

**2 yds. \$1**

Fashion Guild cotton prints in a wide range of colors. All easy care; pretty for full skirted dresses. 36" wide.

Also Denims, Gingham, Taffetas.



SAVE 1/3 ON  
BLANKETS

**\$2** REG. 2.99

Use as a sheet in winter, light blanket in summer! Washable cotton plaids 70x90"; solid colors 80x100".



REGULAR 6.99  
PATTINA® PUMPS

**5<sup>99</sup>**

DuPont's Pattina® olefinic pumps won't chip, crack... synthetic rubber soles. Black, 6-10 AA, 5-10 B.



BOYS' REG. 3.49  
BANLON® KNITS

**2 for \$5**

Save 1.98 now! Extra-heavyweight! No-iron Banlon® nylon holds shape, won't pill. Rich colors. S-M-L.

117 S. CENTRAL Open 9:30 to 5:30; Fridays 'Til 9 773-7301 FREE PARKING