

Aviation Safety Declared in Danger of Being 'Over-Researched'

By ROBERT J. SERLING
UPI Aviation Editor

Washington — (UPI) — A veteran airline captain told the Federal Aviation agency recently that air safety is in great danger of being "over-researched."

The warning came from Capt. Robert N. Buck of Trans World Airlines in a special report prepared at FAA's request. FAA Administrator N. J. Halaby assigned Buck the task of studying the prob-

lem of bad weather operations at civil airports.

There have been four fatal crashes since November involving landings under restricted visibility conditions.

Buck, who spent 30 days inspecting and studying FAA's research and airport facilities, urged the appointment of a "project manager" to prod perfection of an all-weather landing system — one that would enable pilots to land even under zero-zero conditions.

He praised FAA's research in this area and said that not enough people including pilots appreciate or understand "the talents and devotion" of the agency's personnel. But Buck also told Halaby that development of a practical blind landing system has been delayed unnecessarily by a tendency to wait for newer devices.

"There is great risk of this program being over-researched," Buck said, "and the sense of time lost by continually

adding techniques and ideas to the hopper. It is obvious that the technical ability to do the job is at hand or nearly so."

The pilot said that many promising techniques keep seducing researchers into postponing decisions on a final system.

"If each new thought is added to the program and started down the research and development road, we could be 'forever' and never get the job done," Buck added.

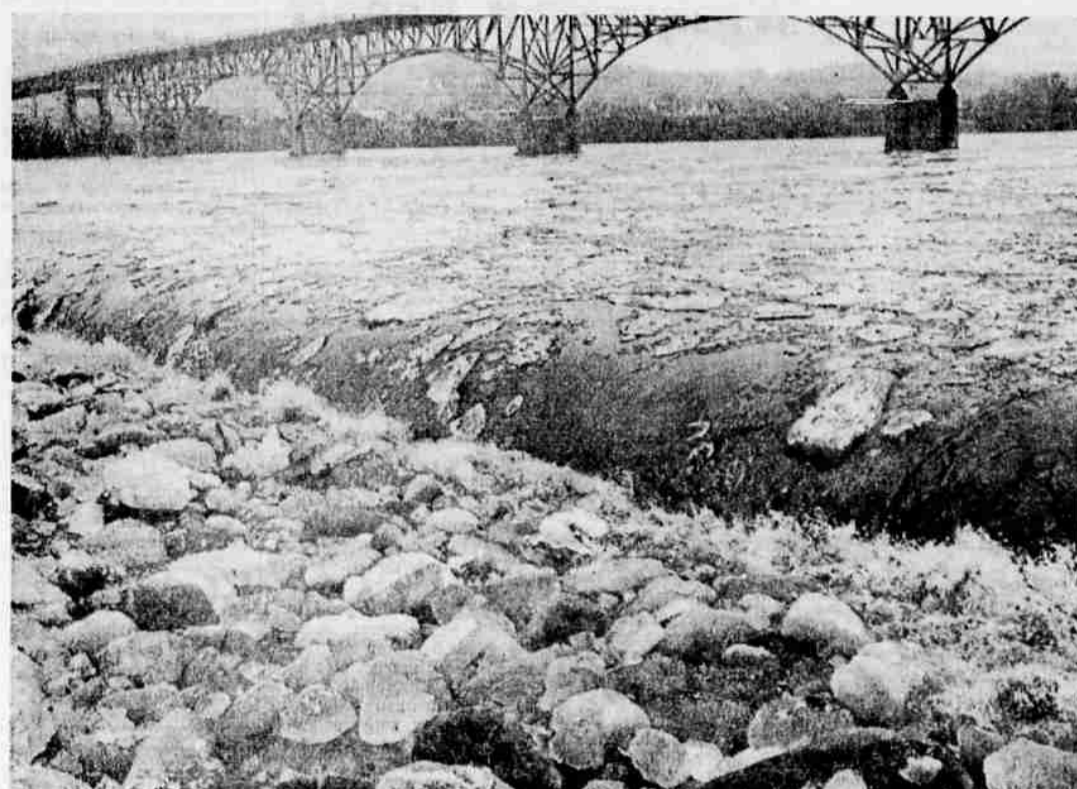
Buck reminded the FAA that the achievement of all-weather flying is one of aviation's most vital goals, "yet it is an area where progress is poorest."

"In 1937, the landing limits for airliners at Newark, N.J., were 200 feet ceiling and a half-mile visibility," his report declared. "These are the same limits today. We have jumped in speed during those 26 years from 170 miles per hour to 600, increased our range from 700 miles to more than 5,000, swelled passenger capacity from 14 to 140, but we have not gained one inch toward all-weather flying!"

Buck acknowledged that the airlines last year completed more than 600,000 instrument approaches safely. But he emphasized that the accident potential while landing in bad weather is too large.

Buck said his study convinced him that there are no "unusual, different or badly neglected" bad weather problems but rather a general failure to use solutions already on hand. He said, for example, FAA's research center has come up with excellent advances in runway lighting but that "the task now is to get the equipment installed where it will do the most good."

and electronic landing aids. Buck said the survey team should include active airline pilots, representatives from the carriers themselves and private pilots. He urged Halaby not only to establish such a group, but keep it in being "for constant monitoring" of the airport problem.



GORGES BREAK LOOSE—The ice gorges on the Upper Allegheny river finally broke loose in the spring thaw

Monday. The huge chunks of jagged ice poured over the Highland Park dam and piled up on the spillway. (UPI)

STAR GAZER

By CLAY R. POLLAN
Your Daily Activity Guide According to the Stars

To get a message for Wednesday, read words corresponding to numbers of your Zodiac birth sign.

11	12	13	14	15	16	17	18	19	20	21	22	23	24	25	26	27	28	29	30	31
11	12	13	14	15	16	17	18	19	20	21	22	23	24	25	26	27	28	29	30	31

Good Adverse Neutral

Survey Recommended

The veteran captain also recommended a nationwide survey of all the civil airports to determine specific shortcomings begging for early correction — in such areas as lighting needs, inadequate runway lengths, obstructions

PACIFIC POWER & LIGHT COMPANY

Dividend Notice

Quarterly dividends of \$1.25 per share on the 5% preferred stock, \$1.13 per share on the 4.52% serial preferred stock, \$1.54 per share on the 6.16% serial preferred stock, \$1.41 per share on the 5.64% serial preferred stock, \$1.75 per share on the 6.00% serial preferred stock, \$1.50 per share on the 5.00% serial preferred stock, \$1.35 per share on the 5.40% serial preferred stock, and 25 cents per share on the common stock of Pacific Power & Light Company have been declared for payment April 10, 1963, to stockholders of record at the close of business March 25, 1963.

PORTLAND, OREGON
March 13, 1963

H. W. Millay, Secretary

Skip the sulphur and molasses — get a CHEVROLET SUPER SPORT

Chevrolet Super Sports* have a charm that soothes your springtime yen for romantic adventure as fast as you can slip into a bucket seat. (Especially the Impala's, with its adjustable new Comfortilt steering wheel*). And the charm lasts all year round. Match that, old-time tonics! In fact, match that, anybody! Front bucket seats are a great start, but Super Sports also feature plush all-vinyl interiors, special interior-exterior trim in tasteful touches, and a veritable feast of goodies we call performance options*. A modest enough phrase to describe tailored-to-your-taste-action, from brisk to utterly overwhelming. Chevrolet and Chevy II Super Sports invite



adventure in convertible or coupe form. Think that's all? You don't know Chevrolet! That same Super Sport zing applies to the Corvair Monza Spyder, very breezy with its air-cooled 150-horsepower rear-mounted engine, 4-speed shift* and an outlook made for green country lanes. Ditto for the new Corvette Sting Ray, a magnificent thoroughbred among pureblood sports cars with not a single sacrifice in comfort. Both Spyder and Sting Ray come in coupe or convertible styles. All Chevrolet Super Sports are like spring days—you've got to get out in them to savor them. So catch yourself a passing zephyr and wait on down to your Chevrolet showroom.

Workshops Planned In Health Education

Eugene — Elementary school teachers will be offered two workshops and four special courses in health and physical education as part of the University of Oregon's 1963 pre-summer and summer session curriculum.

The one-week workshops have been scheduled June 11-15, prior to the regular summer session. The workshops will involve elementary school physical education and elementary school health education. Two hours credit will be given for each workshop.

Dr. Willard E. Burke, director of health, physical education and athletics for

Communism Course Lists Specific Party Objectives

Editor's note: A course about communism has been prepared for Oregon public high school seniors by the Board of Education. This is the last of four dispatches on the proposed program.

By ZAN STARK
Salem — (UPI) — The publication, "Understanding the Nature of Communism," being considered by the State Board of Education, lists specific objectives for the course.

The six-week alternate course for high school seniors is designed to give the student a better understanding of communism so he will be better able to appreciate the advantages of a free society.

The specific objectives, the handbook advises teachers, are to make the student understand:

- Communist party members are committed to the dogma of the inevitability of world communism.
- Soviet economic power constitutes a major challenge to democracy that may be more decisive than military or political power.
- The USSR has a planned economy wherein central economic planning coordinates and controls the total resources of the nation and utilizes them in ways determined by the party leadership for benefit of the state.
- Communists deny the existence of God and believe that man exists without a creator and without divine assistance.
- Communism and Communists exert tremendous influence throughout large areas, and communism appeals to large parts of the underprivileged and underdeveloped population because it promises immediate improvement.

Membership Restricted

— Communist party mem-



Models shown clockwise: Corvair Monza Spyder Convertible, Corvair Monza Spyder Convertible, Chevrolet Impala Super Sport Convertible, Chevy II Nova 400 Super Sport Convertible. Center: Soap Box Derby Racer, built by All-American boys.

NOW SEE WHAT'S NEW AT YOUR CHEVROLET DEALER'S

COURTESY CHEVROLET

9TH & BARTLETT MEDFORD PHONE 772-6115

GREYHOUND GETS YOU TO PORTLAND

FOR ONLY \$7.45

Here's an important fact about travel that can save you money! "Traveling by Greyhound costs less than trains, less than planes and less than driving yourself." Planning a trip? Remember: for economy, GO GREYHOUND... AND LEAVE THE DRIVING TO US.

Exclusive Scenicruiser Service* at no extra fare. For example:

PHOENIX, ARIZ.	26.35	SALT LAKE, UTAH	26.65
LAS VEGAS, NEV.	23.80	CHICAGO, ILL.	58.30
SEATTLE, WASH.	11.40	NEW YORK, N.Y.	84.10

Save 10% extra each way with a round trip ticket.

GREYHOUND TERMINAL 212 NO. BARTLETT 772-2202

GO GREYHOUND

...and leave the driving to us

Applications Being Accepted for Post

Applications are being accepted by the Medford police department for a records clerk to work the shift from 4 p.m. to 1 a.m.

Women who apply must be a high school graduate, be able to type and do filing. While shorthand is not required, it is preferred that she have this knowledge, it was noted.

Applicants must be able to qualify on both a written and oral examination. Starting salary is \$288 per month for the 40 hour work week. The job includes two weeks paid vacation and seven paid holidays with sick leave accumulated at the rate of one day per month.

The police department will provide on the job training.

NEW CLASSES MONDAY

MARCH 25 Business Training!

ROBERTSON School of Business
40 N. Riverside, Medford
PHONE 773-4264

REGISTER NOW!