

Minority Leader Answers Barton

Salem—(UPI)—House Minority Leader F. F. Montgomery Thursday joined the running battle between the governor and legislative leaders.

"The two-edged knife directed at college professors and the state department of finance by House Speaker Clarence Barton smacks of McCarthyism and bears unforgivable inaccuracies for a man in his position," Montgomery charged.

Barton castigated the finance department in a verbal salvo Wednesday in answer to charges made by Gov. Mark Hatfield.

"In castigating the department of finance by saying it was made up of college professors who never have met a payroll, the speaker casts a boulder at the profession of education in general," Montgomery said.

"It is all too typical of the know-it-all attitude of those who are out to get education in this session of the legislature."

Beverly Hills, Calif. —(UPI)—Patricia Allyn Reuss, a shapely blonde hatcheck girl, has more than a sentimental reason for wanting back a painting stolen from her apartment. She told police it depicts her nude.

'Jehovah's Witnesses' Fastest Growing Religious Body in World

By LOUIS CASSELS United Press International

The fastest growing religious body in the world is a Brooklyn-based sect whose adherents believe that doomsday is hard at hand.

Its official name is the Watchtower Bible and Tract Society. The members are better known as "Jehovah's Witnesses."

During the past 20 years — a period in which the membership of other churches approximately doubled — the number of Jehovah's Witnesses has increased by 700 per cent.

Today there are about 900,000 full-fledged Witnesses, and perhaps an additional one million fringe members who read the society's literature, attend its meetings, and generally sympathize with its doctrines.

One-third of them live in the United States. There also are fast-growing branches of the society in West Germany, France, Latin America and Africa.

Their phenomenal growth rate is the result of a zeal for evangelism which puts the established churches to shame.

Every Witness is regarded as an ordained minister, and is sent out to ring doorbells, pass out literature on street corners and preach the society's message to as many people as possible. The aver-

age Witness, working an assigned territory, makes personal calls on at least 10 homes each week.

Behind this passion for convert-winning is the firm conviction of the Witnesses that the end of human history is imminent. They expect it to come at any hour, and almost certainly within the next 10 years.

The end will come, they say, with a titanic "Battle of Armageddon" between the forces of God and the forces of Satan. The awesome pyrotechnics of this struggle "will make atomic explosions look like firecrackers." The only survivors will be Jehovah's Witnesses, who will thereafter live eternally and blissfully, not in heaven, but right here on earth.

Other Religions Satanic Because they regard all other religious bodies as instruments of Satan, Witnesses feel that they can express their love of neighbor only by relentless proselyting — by bringing as many people as possible into their own fold before it is too late.

They also look upon all human governments as instruments of Satan, and therefore refuse to pledge allegiance to any flag or to serve in any nation's armed forces. This stand has brought them into constant conflict with the law, and exposed them to many mob attacks, tar-and-featherings and other savage persecutions, both in this country and elsewhere.

But the Witnesses are not averse to using the judicial processes of government. Since 1938, they have carried 50 test cases before the U.S. Supreme Court, and have won 37 of them. Through this litigation, they have won the right to preach on the streets, refuse jury duty, avoid salutes to the flag, and carry on house-to-house solicitations.

Leading constitutional lawyers credit the cases brought by the Witnesses with achieving a major expansion of civil liberties for all Americans.

But this was a purely incidental by-product, so far as the Witnesses are concerned. They care nothing for improv-

ing social conditions or righting injustices in human society, which they feel is corrupted beyond all hope of redemption and already doomed to fiery destruction.

Many Americans who have had brief encounters with Jehovah's Witnesses or their literature have formed the impression that they are an off-beat body of Protestants. But the Witnesses have a distinctive theology of their own, which can hardly be described as a version of Christianity.

In his excellent study of the Witnesses, "Armageddon Around the Corner," Prof. William J. Whalen of Purdue university says Witnesses may be described as "fundamentalist Unitarians."

"They regard the Bible as the infallible word of God, a word which must be taken literally and at face value," says Prof. Whalen. "At the same time, they stoutly deny the divinity of Jesus Christ and the doctrine of the trinity. An orthodox Christian theologian would recognize bits and pieces of a dozen ancient heresies in Witness theology."

Witnesses believe that the Almighty is wrathful at Christians because they call him "God" instead of using his proper name, Jehovah. They have their own translation of the Bible in which Jehovah has been substituted for God more than 6,000 times.

Although they look forward with joy to an imminent and fiery destruction of the present world, Witnesses do not believe in a hell. The wicked people who do not qualify for perpetual bliss after the battle of Armageddon "will not be condemned to eternal punishment. They will simply be extinguished."

Witness theology does provide for heaven, but only a select "little flock" of 144,000 persons will go there. Others saved from the final debacle will remain on earth enjoying a trouble-free existence forever.

Magazine Provided Name The official name of the society is derived from the title of a magazine, "The Watchtower," founded in 1879 by Charles Taze Russell, an Allegheny, Pa., watchmaker who

was attracted to adventist doctrines of biblical interpretation.

He acquired a body of followers, originally known as Russellites, and predicted that the world would come to an end in 1914. Witness theologians have since reinterpreted his prophecy and hold that 1914 marked the beginning of an "invisible struggle" in heaven which will culminate in the fiery battle of Armageddon on earth, any day now.

After Russell's death in 1918, the movement was headed by a Missouri lawyer, Joseph F. Rutherford. He continued the emphasis on an imminent end of time, and was author of the famous Witness prophecy: "Millions now living will never die."

Rutherford died of cancer in 1942 and was succeeded by Nathan H. Knorr, of Bethlehem, Pa., who had been a full-time Witness since he graduated from high school in 1923.

Knorr is a quiet and retiring man compared to his colorful predecessors. He has been responsible for the present high degree of organiza-

tional efficiency in the society, as well as for putting its prodigious output of literature (125 million books, tracts and magazines a year) on a businesslike basis.

The society's headquarters, called Bethel House, and its printing plant are located in Brooklyn. Full-time workers, of whom there are about 5,000 in the movement, receive their room, board and \$14 a month spending money. Everyone, including President Knorr, lives on the same standard.

Other Witnesses earn their own living in everyday jobs and carry on their house-to-house evangelism during evenings and week ends. The movement in modern times has been notably devoid of scandals. Witnesses are excommunicated if they fail to

maintain high standards of morality in their private lives.



An Aid To Sleep with Two Step Action S.W.T.® means SLEEP WELL TONIC

The NEW two step action S.W.T. tablet is an aid for a SAFE, SOUND full night's sleep. The first ingredients are released immediately after taking to help put you to sleep. The other tiny "sleep breadlets" dissolve about 4 hours later helping you to stay asleep for a full uninterrupted night's rest. Awake refreshed with no "sedative hang-over." S.W.T. tablets contain NO barbiturates, NO bromides, NO narcotics, NO harmful or habit forming drugs. So Safe No prescription needed. 30-tablets, only \$2.00.

WESTERN THRIFT 30 N. Central

"OIL TO BURN" Mobilheat 5 & H Green Stamps MEDFORD FUEL CO. 772-2111

Education in America

Youngsters' Difficulties Can Be Corrected by Adult Guidance

By DAVID NYDICK UPI Education Specialist

Parents have been made extremely aware of the need to seek psychological treatment for children when needed. Although many situations call for this, every problem is not a symptom of an emotional disorder.

Many difficulties can be corrected by guidance and good judgment. Temper can be controlled.

Consider the case of Fred, a third grader, who punched and kicked Larry, his classmate. This incident grew from

a simple shove. Fred lost his temper. He had a great deal of trouble controlling it. The teacher had to pull the boys apart. For the next few minutes Fred remained wild. He would not listen to reason. When he finally settled down, he was ashamed and sorry.

Unfortunately, similar incidents occurred more frequently. This pattern of behavior caused the teacher much concern. She had a chat with the principal. Perhaps together they could help Fred. The aim was to develop a friendship. Fred was invited to stop in at the office whenever he

felt uneasy or lost his temper.

With the next explosive incident, Fred hesitated to see the principal. The teacher brought him to the office. The principal did not press the issue. Fred did not want to discuss what had happened. Eventually, after several more incidents and visits Fred started talking about his problems. This was promising. During the next month, his temper outbursts were less and less frequent. He had found another outlet.

The talks with the principal were relaxing. Fred began to understand his own problem. He wanted to control his temper. As he discussed each incident, the causes became less important. In this way, he developed the needed control.

The success of this approach has several implications for working with children. The key is to provide an escape which does not destroy a child's pride. A child often faces situations which he does not know how to handle. He becomes frustrated. The result may be a temper tantrum or other undesirable action.

Often Use Fists Parents should recognize that children have many things to learn. Dealing with difficult situations is one of them. Young children often use their fists to settle arguments. As they grow this method becomes less and less acceptable. Unfortunately, society is faced by many individuals who have not developed correct social behavior. The growth of understanding and ability to handle unpleasant situations is achieved through experience and guidance.

Parents and others concerned with the child's development should use the many available opportunities to achieve acceptable social behavior. When children respond improperly, they need understanding and direction. Remove the dead end types of situations. Show them that there are other ways to deal with these problems. This will eliminate the frustration and need for reacting explosively.

Problems of this nature might be symptoms of more difficult problems. A child should respond favorably to the suggested approach in a reasonably short time. In cases of poor response assistance should be sought.

Legal Battle Ends Between Chrysler And Stockholders

Detroit—(UPI)—Chrysler Corp. and a stockholders' group headed by Detroit attorney Sol Dann have agreed to end their long legal battle which includes charges of mismanagement and corruption and a \$30 million libel suit.

A hearing to end the three-year litigation will be held May 13 in a Chancery Court in Wilmington, Del.

Dann has agreed to drop

more than 20 mismanagement charges against some of Chrysler's present and past officers, including former President L. L. Colbert and William C. Newberg and former Chairman K. T. Keller.

Drop Suit Chrysler will drop a \$30 million libel suit against Dann. And in line with Dann's charges, Chrysler will change its incentive compensation plan to require higher corporate earnings before executives can get earnings.

The legal battle was one of the most publicized in financial history. It started in 1960 when Newberg was forced to resign as president on conflict of interest charges. Colbert stepped down in 1961 when Townsend and Love took over.

Dann charged general mismanagement and accused certain officials of having interest in supplier companies doing business with Chrysler. He also attacked the stock option and bonus plan for top executives.

Jobless Rate Has Unexpected Rise

Washington—(UPI)—An unexpected rise of 250,000 in unemployment during February boosted the nation's jobless rate to 6.1 per cent, the Labor Department reported Thursday.

It was the first time since December, 1961, that the jobless rate has reached 6 per cent.

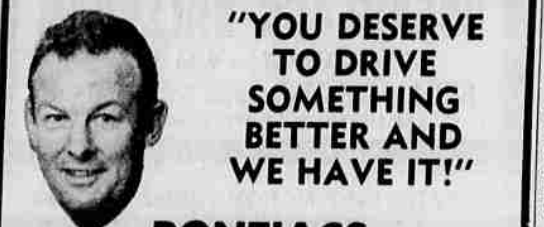
The department said 4.9 million persons were unemployed during February compared with 4.5 million in the same month a year ago. The 4.9 million figure was the highest recorded since July, 1961.

The department said total non-farm employment rose by more than 500,000 to 62.3 million in February and was 1.2 million above a year ago after adjusting for seasonal conditions.

Hit and Run Victim Found Near Lakeview

Lakeview, Ore. —(UPI)—The body of a 60-year-old woman, apparently struck by an automobile, was found Thursday on a county road four miles west of Lakeview.

The victim was identified as Miss Theresa Arzner, of Lakeview.



"YOU DESERVE TO DRIVE SOMETHING BETTER AND WE HAVE IT!"

PONTIACS

- 62 PONT. BONNEVILLE WAGON. Power steering & brakes, Auto., R&H. The very tops in plush station wagons. 2 to choose from plus wide-track.
- 62 PONT. CATALINA WAGON. 9 pass., Auto., R&H, P.S., P.B., plus wide-track.
- 62 PONT. TEMPEST LE MANS. A white convertible with Bucket Seats, Auto. trans., R&H.
- 62 PONT. BONEVILLE 4 DR. Hardtop. Auto. Trans., P.S. & P.B., elect. seat, one of the cleanest cars in the valley, plus wide-track.
- 62 PONT. TEMPEST LE MANS. Sport Cpe. with bucket seats. Auto. trans., R&H, white wall tires.
- 62 PONT. CATALINA 4 DR. H.T. Auto. trans., P.S., P.B., plus wide-track. Clean car.
- 61 PONT. CATALINA. Black convertible with white top. P.S., P.B., Auto. trans., R&H, white wall tires plus wide-track.
- 61 PONT. TEMPEST SDN. Standard trans., R&H.
- 60 PONT. VENTURA 4 DR. H.T. R&H, P.S., P.B. plus wide-track.
- 59 PONT. STATION WAGON. Auto. trans., P.S., P.B., R&H.
- 58 PONT. BONEVILLE. A red and white, bucket seats, Auto., P.S. & P.B., R. & H.
- 57 PONT. CATALINA 2 DR. H.T. A sharp little car and priced right.
- 56 PONT. 4 DR. SDN. Auto. trans., R&H.
- 55 PONT. 870 4 DR. WAGON. 6 pass., auto. trans., R&H.
- 55 PONT. 860 2 DR. WAGON. 6 pass. auto. trans., R&H.

CHEVROLETS

- 62 CHEV. IMPALA. A white sport cpe., with the big engine, new tires, powerglide, R&H, P.B.
- 61 CHEV. MONZA CPE. White with red bucket seats, 4 spd. trans., R&H.
- 60 CHEV. EL CAMINO. White pickup with 3 spd. trans., R&H.
- 59 CHEV. IMPALA CPE. White with red trim, auto. trans., P.S. & P.B.
- 58 CHEV. WAGON. Auto. trans., R&H. See this today.

BUICKS

- 55 BUICK CENTURY. 4 dr. H.T. 2-tone green, Auto., R&H, P.S. & P.B.
- 50 BUICK ROADMASTER. 54,000 mi. Auto., R&H, new white wall tires, sharp car.

OLDSMOBILES

- 55 OLDS. 88 2 DR. H.T. Red and white, Auto., R&H, P.B.
- 55 OLDS. 98 4 DR. H.T. Auto., P.S. & P.B., elect. windows.
- 54 OLDS. 4 DR. SDN. SPECIAL \$149.

FORDS

- 57 FORD RANCHERO PICKUP.
- 57 FORD 2 DR. SDN., R&H, standard trans.
- 57 FORD FAIRLANE 500 2 Dr. H.T. P.S. & P.B., R&H.
- 54 FORD WAGON. Standard trans.

IMPORTS

- 62 RENAULT DAUPHINE SDN. Local owner, serviced by Dean & Taylor.
- 60 RENAULT CARAVELLE Convertible. 4 spd. trans., rebuilt engine, tops in low cost transportation.
- 59 RENAULT DAUPHINE SDN. Priced to sell.
- 60 PEUGEOT WAGON. France's very best.
- 60 VOLVO SDN. 4 spd. trans., white with red bucket seats.
- 58 M.G.A. ROADSTER. Best in the west!

COMMERCIALS

- 51 GMC 4 cyl. Diesel Tractor, 90% tires, overhauled engine, trans. & diff. fifth wheel, single axle.
- 55 FORD 1/2 TON Pickup. 3 speed trans.
- 47 GMC 1/2 T. Pickup. 4 spd. trans., R&H.
- 60 WILLYS JEEP 4 WD.
- 48 FORD 1/2 T. Pickup. 6 cyl.
- 47 CHEV. STOCK RACK.
- 47 DIAMOND T Cab, 2 ton.
- 47 CHEV. 1/2 T. Pickup. It runs for only \$75.

Dean & Taylor "WIDETRACK TOWN" 2177 So. Pac. Hwy. 99

RHODODENDRONS!

New Shipment - Just Received!

17 VARIETIES! Real Beauties - Including: DWARF • REGULAR • SPECIES

All are well budded and will bloom this Spring. Selected by ratings as to flower, how nice the plant is, and hardiness. You can depend on these!



10 Varieties of GLADS! These are choice! SPECIAL 50 for \$1.89 100 for \$2.95

Check over our large selection of Roses, Shade Trees and Ornamental Trees. Plant Now!

VISIT US AT OUR NEW LOCATION: Elton's GARDEN FARM Store Corner 4th & Fir Plenty of Free Parking PHONE 773-8444 "We sell every bloomin' thing"

NOW! FRIGIDAIRE Brings You FOR A LIMITED TIME THIS PREMIUM OFFER

Stop! Look! LISTEN! "SPATTER-FREE BROILING"

SPATTER-FREE BROILING

BROIL 100 TIMES Yet never need clean the oven

Now you can broil the inexpensive cuts such as chuck, blade and 7-bone roasts. Yet no smoke. No spatter.

FRIGIDAIRE PRODUCT OF GENERAL MOTORS

"Thrifty Thirty" Range Spatter-Free Broiler

- Big 23-inch wide oven holds a large turkey—cooking capacity for a family reunion.
- Space to spare on the cooking top
- Unlimited heat settings for all surface units
- Storage galore in full-width storage drawer

Enjoy Frigidaire Dependability **\$169⁹⁵** With Your 5 to 7-Year-Old Range in Operating Condition

LESS CAL/ORE BONUS ALLOWANCE **20.00**

NOW ONLY \$149⁹⁵

FRIGIDAIRE PRODUCT OF GENERAL MOTORS

With Instant Heat Spatter-Free Broiler

- Speed-Heat surface unit gets red hot in seconds then cuts back to regular cooking heat automatically
- Cook-Master control minds oven cooking for you
- Unlimited heat settings for all surface units
- Storage galore in full-width storage drawer

Enjoy Frigidaire Dependability **\$219⁹⁵** With Your 5 to 7-Year-Old Range in Operating Condition

LESS CAL/ORE BONUS ALLOWANCE **20.00**

NOW ONLY \$199⁹⁵

50-GALLON GLASS-LINED WATER HEATER **\$69.50** LESS CAL/ORE BONUS ALLOWANCE **15.00** **Now Only \$54.50**

LEONARD ELECTRIC CO. "Medford's Leading Appliance Dealer for the Past 32 Years" 309 EAST MAIN STREET PHONE 773-4541