

**Dennis the Menace**



"MOM! CAN YOU COME UP HERE AN' MAKE DAD BE PATIENT?"

**OSU Receives Grant For Graduate Work**

Corvallis - A five-year grant totaling \$282,685 has been awarded Oregon State University by the National Institutes of Health to strengthen graduate training programs in microbiology.

The funds will be used to provide advanced training for selected graduate students in the fields of marine, soil, and dairy microbiology and for purchase of laboratory equipment needed for work in those three areas plus studies on microbial physiology and genetics.

Included in the \$50,000 plus total for each year will be five graduate and post-graduate fellowships, according to Dr. Paul R. Elliker, head of the department of microbiology. Trained microbiologists are badly needed in the United States, he said.

Salem - UPI - Trustees of a proposed graduate and research center in Portland met here Thursday and were urged by Gov. Mark Hatfield to aim for specialization.

**Travel Division Gets Redbook Award**

Oregon state highway department's travel information division has been cited for "outstanding achievement in travel advertising and promotion" during the past year.

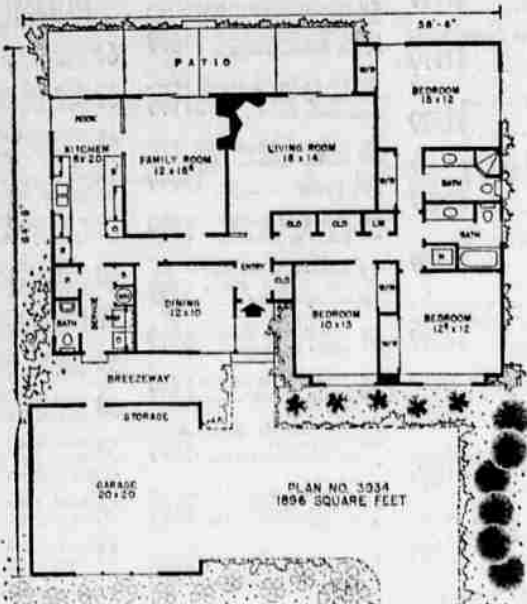
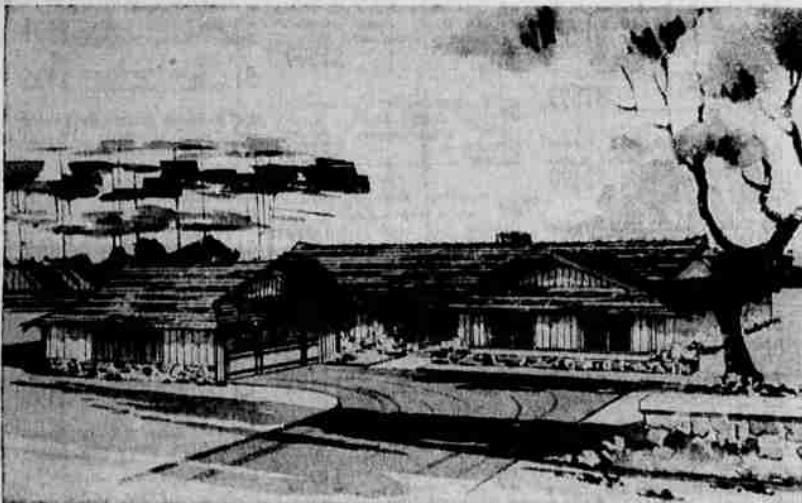
The division carried off the top award in its category in a nationwide contest sponsored by Redbook magazine and the National Association of Travel Organizations. Dennis Clarke, director of the travel information division, accepted the bronze plaque for the division.

The 1962 Redbook-NATO Travel Awards contest was organized to encourage and reward creative thinking in advertising and promoting all areas of the travel industry.

**STAR GAZER**  
By CLAY R. POLLAN  
Your Daily Activity Guide According to the Stars.  
To develop message for Saturday, read words corresponding to numbers of your Zodiac birth sign.

<b>ARIES</b> MAR. 21 - APR. 20 6-55-66-73 74-76-77	<b>TAURUS</b> APR. 21 - MAY 21 7-19-20-41 51-52-72	<b>GEMINI</b> MAY 22 - JUNE 21 1-14-25-34 47-58-69	<b>CANCER</b> JUNE 22 - JULY 23 3-18-29-40 61-71-79-88	<b>LEO</b> JULY 24 - AUG. 23 8-17-28-39 50-60-81-89	<b>VIRGO</b> AUG. 24 - SEPT. 23 12-23-24-44 57-68-88-90	<b>LIBRA</b> SEPT. 24 - OCT. 23 4-22-33-44 54-65-80-83	<b>SCORPIO</b> OCT. 24 - NOV. 23 5-20-31-42 52-63-82-84	<b>SAGITTARIUS</b> NOV. 24 - DEC. 23 9-16-27-38 49-70-78	<b>CAPRICORN</b> DEC. 24 - JAN. 23 2-13-24-35 45-56-67	<b>AQUARIUS</b> JAN. 24 - FEB. 19 10-21-32-43 53-64-75	<b>PISCES</b> FEB. 20 - MAR. 21 11-15-26-37 48-59-87-89
---	---	---	---	--	--	---	--	---	---	---	--

Good (G) Adverse (A) Neutral (N)



**This Week's Plan for Home Builders**

By HIAWATHA ESTES  
Before you build or buy a home, think of the convenience that will make the house more livable for both you and your children, then incorporate them into your final design. It's much less expensive than adding them at a later date.

For instance, here in addition to a spacious living room, there is a separate informal family room with its own fireplace and handy to both the kitchen and patio. Having such a room in a home is especially valuable as most family activities will take place here.

The family room is separated only partially from the kitchen and its generous size nook. It is a short distance from the kitchen, through the sliding glass doors of the family room, to the patio. This convenient arrangement means that outdoor meals can be planned at any time and at a minimum of inconvenience.

**Separate Dining Room**  
The separate dining room with its large corner windows

is accessible from both the kitchen and entry.

The service has space for laundry facilities, plus closets for brooms, water heater and pantry storage. The oversized pantry closet could be used for general storage if preferred. Children can use the half bath off the service without tracking grime through the house from outside.

The well integrated floor plan takes into account the normal flow of daily traffic and makes it easy for you to get from one room to another without any detours. This requires a small amount of extra square footage but over the years is well worth the cost.

**Desirable Storage Space**  
There is an abundance of desirable storage space in all areas of the home. In addition to that already mentioned, nearly 18 linear feet of closets plus the furnace open to the halls. Each of the front bedrooms has its own wardrobe while the master bedroom has two. Both the family and master bedroom private bath

have long pullmaps with storage below.

A roofed breezeway offers protection from the weather when going from the house to the garage.

A combination gable - hip roof has been utilized in designing this contemporary exterior. During construction, it could be changed to either a straight hip or gable if so desired.

Complete working drawings for this plan can be purchased at a cost of \$7.50 for the first set and \$5.00 for each additional set when ordered at the same time. This plan will be available at these prices until May 8. Please allow two to three weeks for delivery. The following home plan books are also available: Hallmark Homes, \$1; Award Homes, \$1; Town and Country Homes, \$1; Homes for Living, \$1; Homes of Distinction, \$1; Ranch and Modern Homes, \$2. All books are \$7 value, only \$3. Send all orders for either plans or books to: Hiawatha Estes, Post Office box 404-T, Northridge, Calif.

**"OIL TO BURN"**  
Mobilheat  
S & H Green Stamps  
MEDFORD FUEL CO.  
772-2111

**for USED CAR VALUES...  
LOOK HERE FIRST**

<p><b>'60 Renault Panel</b></p> <p>Lots of doors for town delivery plus good gas mileage.</p> <p><b>\$1299</b></p>	<p><b>'60 Renault Caravelle</b></p> <p>A real sharp dark green Convertible, 4 Spd. Trans., rebuilt engine.</p> <p><b>\$1199</b></p>	<p><b>'60 Volvo 2 Door</b></p> <p>Bright red, heater and music, 4 Spd. Trans. A real good buy.</p> <p><b>\$1099</b></p>	<p><b>'59 Plymouth Wagon</b></p> <p>9 Pass. with Auto. Trans., power steering and brakes. Motor overhauled.</p> <p><b>\$1499</b></p>
<p><b>'58 Ford Sedan</b></p> <p>V-8, radio and heater with standard Trans., lots of good transportation.</p> <p><b>\$799</b></p>	<p><b>'58 Renault Sedan</b></p> <p>Here's a lot of low cost transportation for such a small price.</p> <p><b>\$299</b></p>	<p><b>'57 Ford Ranchero</b></p> <p>This light duty pickup is in top shape. Come out and take it for a drive.</p> <p><b>\$865</b></p>	<p><b>'57 Ford Fairlane 500</b></p> <p>Auto. Trans., power steering and brakes. Try it! Buy it!</p> <p><b>\$699</b></p>
<p><b>'57 Ford 2 Dr. Sedan</b></p> <p>Here's a lot of car for the money. Would make a good second car.</p> <p><b>\$599</b></p>	<p><b>'57 Ford Prefect</b></p> <p>English Ford, a small car just right for the wife to drive.</p> <p><b>\$399</b></p>	<p><b>'56 Cadillac</b></p> <p>Coupe DeVille with full power. This car don't show its age—look it over!</p> <p><b>\$999</b></p>	<p><b>'56 Buick 2 Dr. Sedan</b></p> <p>Automatic Trans., power steering and brakes, low mileage. Tops for its age.</p> <p><b>\$499</b></p>
<p><b>'56 Volkswagen 2 Dr.</b></p> <p>Here's the salesman's mistake for the month—at a low, low price.</p> <p><b>\$475</b></p>	<p><b>'56 Ford 2 Dr.</b></p> <p>Standard trans. Still some good miles left in this and how could you go wrong at . . .</p> <p><b>\$399</b></p>	<p><b>'56 Plymouth Sedan</b></p> <p>Make a good second car, just something to drive to work in.</p> <p><b>\$299</b></p>	<p><b>'55 Buick Century</b></p> <p>4 Dr. Hardtop, auto. trans., power steering and brakes. 2 tone green.</p> <p><b>\$499</b></p>
<p><b>'55 Olds 4 Dr. H.T.</b></p> <p>Automatic trans., power steering and brakes.</p> <p><b>\$299</b></p>	<p><b>'55 Plymouth Wagon</b></p> <p>6 pass., automatic trans., power steering and brakes.</p> <p><b>\$440</b></p>	<p><b>'55 Pontiac</b></p> <p>We have 2 Star Chiefs to choose from at the low price of . . .</p> <p><b>\$399</b></p>	<p><b>'54 Olds 4 Dr. Sedan</b></p> <p>Needs some work but it will run now. It's yours for . . .</p> <p><b>\$190</b></p>
<p><b>'54 Plymouth Wagon</b></p> <p>A body man's special. Was hit on the rear bumper, runs good and only 29,000 miles.</p> <p><b>\$186</b></p>	<p><b>'53 Chev. 2 Dr.</b></p> <p>Make a good car for that young man in the family.</p> <p><b>\$299</b></p>	<p><b>'52 Pontiac 4 Dr.</b></p> <p>Here's a real work car. Buy it now and work on it this week-end.</p> <p><b>\$69</b></p>	<p><b>'49 International</b></p> <p>METRO - Walk-in-Van or Milk Truck—Convert to camping unit.</p> <p><b>\$399</b></p>

**Open Tonight 'Til 9 (THIS WEEK ONLY)**

**DEAN & TAYLOR "WIDETRACK TOWN"**  
2177 South Pacific Hwy. "99" Phone . . . 773-7421