

Hadan Ranch Holds Much of History Developed in Indian Wars

By J. O. McKINNEY
Mail Tribune Correspondent

Hadan Livestock company's home ranch, while in Siskiyou county, is tightly woven in the mesh that holds Oregon.

It is at the south end of Lower Klamath lake, one of the links that reaches across the state line. Long time foreman on the ranch, Charley Stukel, is the last descendant of the pioneer Stukel family for which Stukel Mountain, near Merrill is named.

But wherever its location, the ranch holds much of the wild history that was developed during Indian wars in the West. Van Bremmer Fort, built on the ranch in 1870 by Daniel Van Bremmer, is still standing. It has been moved from its original location to Lava Beds National monument as one of the attractions for visitors.

Today the ranch holds at-

tractions not associated with wars. Cattle graze in pastures enclosed with woven wire fences. Television programs are screened in the luxuriant ranch house; while 26 miles of irrigation ditches carry water that keeps green and productive the hundreds of acres of grazing land.

Yet all is not tamed even today. Wildlife abounds more than in most areas. Situated at the foot of Mt. Dome, mule deer are seen throughout most hours of the day. The last bighorn sheep seen in northern California was killed on Mt. Dome; while chukar partridges planted on the mountain have come down to this ranch to live. It is the natural home of the wild. Badgers, seldom seen animals today, are numerous on the ranch.

The introduction to this place is romantic. From the



BUILT IN 1870—Van Bremmer fort, pictured above, was built on the Hadan ranch in 1870 by Daniel Van Bremmer. It still stands today, although it has been moved from its original location to the Lava Beds National monument.

front gate to the ranch headquarters is a mile. At the home place is an old barn whose framework is put to-

gether with wooden pins. Not a nail is driven into its 100-year-old timbers, save where some careless "Johnny-come-

lately" cowpoke tried to turn carpenter with indifferent results.

Must Be Retained

Present owner Mrs. Suzanne Hadan, has decided this old barn must be retained for sentimental reasons for so long as its timbers will endure.

Beginning with Van Bremmer who homesteaded the 160 acres that is now the nucleus of the property, George Davis, Grayson and Owens, Mitchell Company.

Gene Hammond and the present owners have all run cattle on this spread.

One thing is outstanding throughout this tenure. All disliked barbed wire. Most of the fencing is woven wire; with all replacements now being of that material. A total of 7 carloads of woven wire has been built into the ranch improvements during its days.

Another novelty, while not of man's doing, is the water supply. Traveling to this property from any direction, one crosses a sagebrush, and sand-

hill waste. But on this property are artesian wells and springs that have been built into an irrigation system to make the place highly productive.

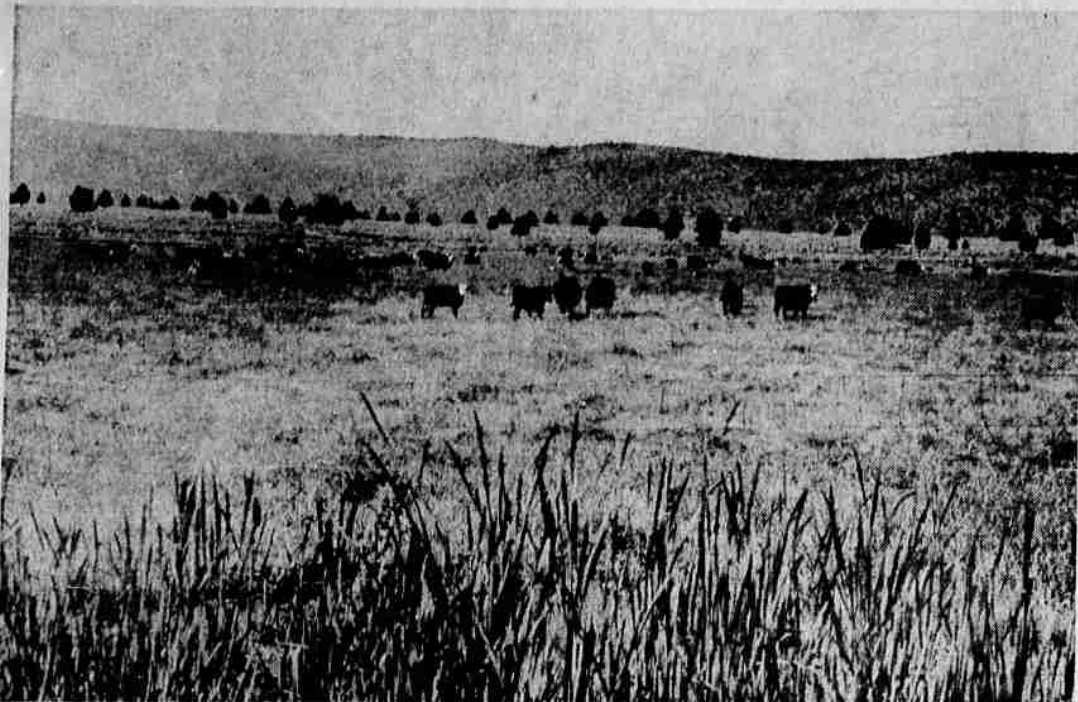
Visiting Is Experience

Visiting the ranch is an experience. The wildness which in the long ago gripped the country seems still to have left its hold. Little noise is heard, save the lowing of cattle, or the wail and staccato bark of coyotes. It is a place of solitude where imagination can easily again people the country with Modoc warriors.

But Mrs. Hadan has caught the spirit of the region. She will run no more cattle than the range will carry. She does nothing to exploit its natural beauty beyond leaving it as it is, save for the creature comforts of both man and animals who live there. Her returns from her ownership are the joys of having such a place where nature combined its many resources to build a masterpiece.



PIONEER FAMILY—Longtime foreman of the Hadan ranch is Charley Stukel, shown riding with his wife. Stukel is the last descendant of the pioneer Stukel family, for which Stukel mountain, near Merrill, is named.



HISTORIC RANCH—This expanse is part of the Hadan Livestock company's ranch at the south end of Lower Klamath lake—a ranch which has been the scene of much of the history that developed during the Indian wars in the West. Today, 26 miles of irrigation ditches carry water to keep hundreds of acres of grazing land productive.

1,402 Live Births Reported in County

Jackson county's population increased through vital statistics during 1962. There were 1,402 live births and 681 deaths.

The births increased over 1961 and the deaths decreased, according to Dr. A. Erin Merkel, Jackson county health officer.

Births totaled 1,360 in 1961 and there were 739 deaths. The only noticeable increase in deaths in 1962, compared with 1961, was in the 50 to 59 age group. The number here increased from 67 to 76 in 1962.

There also were more fetal deaths in 1962. There were 24

in 1961, according to the health report, and 31 in 1962.

Not Included

Illegitimate births are not included in the Jackson county figures as they are registered directly with the Oregon State Board of Health.

Boys led girls in number of births both years. There were 736 males and 666 females born in 1962 and 712 boys and 648 girls in 1961.

Decrease Is Apparent

Considering that the county's population increased from 76,523 in 1961 to 80,346 in 1962, Dr. Merkel said he noted a gratifying decrease in the death rate.

"This decrease has been quite apparent in several specific diseases," the health officer said, "such as deaths due to genito urinary disease, respiratory disease and cancer."

"We can also be proud of our infant death rate under one year of age," Dr. Merkel said. "This year we had 24 under one year as against 29 last year, and 25 the preceding year of 1960, while the birth rate has remained approximately the same during the past three years."

Most of the 1962 babies were born in hospitals, just

four of them entering the world at home, one en route to the hospital and one in the physician's office.



NAMED WINNER - J. D. (Don) Monteith of Klamath Falls, a former Medford resident, was recently named winner of the annual Klamath Falls Jaycee Outstanding Senior Citizen award. Monteith, now assistant manager of the U. S. National Bank of Portland, Klamath Falls branch, was with the Medford branch of the bank for a number of years, and participated here in many civic activities.

People Not Aware Of Benefits Due

Many people in the Rogue valley are not aware of all the benefits available to them under social security, Edward B. Jacobson, social security district manager in Medford noted today.

A lot of people are not aware that social security means more than just retirement benefits. Social security also provides benefits for workers and their families in case of the wage earners disability or death. Social security is lifetime protection against loss of income, Jacobson noted.

Jacobson said some people are losing benefits to which they are entitled. Benefits are not automatic, and an application for them must be filed with the social security office. People who have questions about social security should contact their local social security office.

The Medford social security office is located at 1017 North Riverside ave., telephone 773-7348.

Make it a "Date" Now to Attend the ...

Hillah Temple Shrine Band Concert

NEXT SUNDAY JANUARY 27th - 3:00 P.M.
MEDFORD HIGH AUDITORIUM

Where There's FUN ...
You'll Find FIESTA!

Planning a Party?

... Here's the Key to its Success!

Jorgensen's FIESTA ICE CREAM

Yes, the magic touch to party fun and easy entertaining is smooth, luscious FIESTA ICE CREAM . . . convenient to keep on hand for all occasions, easy to serve . . . a delightful treat for every taste . . . economical, too! There are so many party dishes and desserts you can make without trouble or bother, and Jorgensen's FIESTA is DOUBLY GOOD because an exclusive nutrient—NUTRIMIX—has been added. So, stock up on YOUR favorite flavors in this wonderful ice cream . . . it comes in colorful, refrigerator-size cartons, and is available everywhere in the Rogue River Valley.

For Fine Dairy Products Ask for 'Jorgensen's'

DO BOTH

AT THE SAME TIME, IN THE SAME PLACE

Twice as convenient . . . twice as economical . . . this is where you SAVE time and money. Be your own drycleaner or laundry and pocket the difference.

DRY 10¢ (one dime)

Do your drycleaning in our new Westinghouse Coin-Operated Drycleaners. Now you can dryclean your own clothes and fabrics at a fraction of the usual cost. And everything comes out spot and stain and handbox clean. The Westinghouse Drycleaner is so easy to use. Just put in your clothes, click in your coins and save as much as \$5.00 on a load.

Dryclean \$2.00 (8 quarters) per load

WASH 20¢ (2 dimes) per load

Do your laundry in our Westinghouse Laundromat Washers. Wash and fluff-dry a full week's laundry in less than an hour in the best coin-operated laundry equipment made. For your convenience and savings—Big Double Load Washers.

Located at 11th and Oakdale—Next to Oakdale Market

OAKDALE LAUNDROMAT

COIN OPERATED DRY CLEANING