

Precautions Being Taken To Notify Motorists of Ice

"We are open for suggestions," R. L. Lammert, district maintenance supervisor for the Oregon state highway department, commented this week after foggy-icy conditions earlier caused several accidents on the Interstate 5 viaduct.

The highway department last week installed yellow caution signs stating "Ice" at each end of the viaduct, Lammert said. He added that plans are under way for additional signs on temporary standards with flares, which would be installed once icing occurs.

Lammert said both the department's sanders are back in operation. One was damaged Monday when it was struck by a car while it was sanding along the freeway.

Lammert said the department's sander had been on the freeway viaduct early Tuesday morning but several other icy spots were being sanded in other areas of the valley during the same period.

Lammert said the department will try to have the viaduct sanded every 30 minutes when icy. He noted that sand only gives cars a small amount of traction and vehicles operating too fast will skid if the brakes are applied. Once sand is applied to ice it will remain only as long as traffic is slow and light. Vehicle speed and constant travel remove the sand from the highway, he noted.

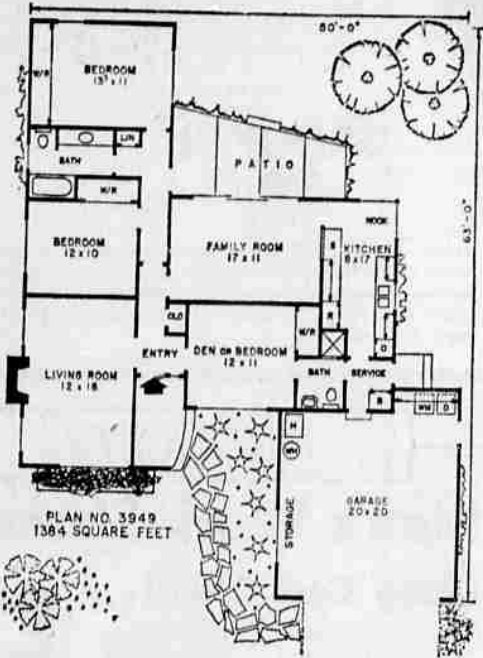
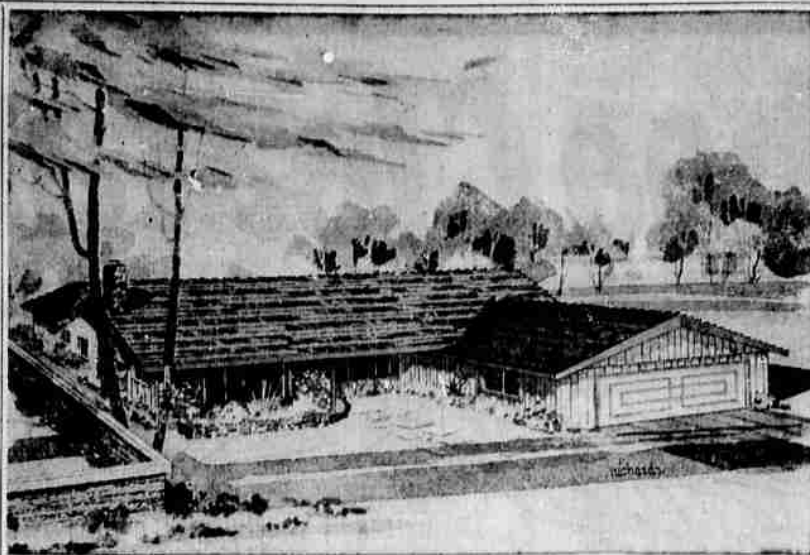
Lammert complimented Medford police in their efforts Jan. 1. Officers stopped motorists before reaching the viaduct and cautioned them to drive with caution. Lammert said he believed it helped in clearing the viaduct and preventing major accidents.

The district superintendent noted that on other highways the department mixes rock salt or calcium chloride with the sand to melt snow and ice. These chemicals can not be used on new concrete pavement, he noted.

Lammert commented that the problem appears to be educating the out-of-valley driver to slow down on a 70-mile-per-hour freeway once they see an "ice" sign.

GROWTH

East Lansing, Mich. — UP — Michigan State University, the first land-grant college in the United States, has an accurate thermometer of its growth. A record of the number of degrees granted by the institution since 1861 showed it took 50 years before the 100-degree per year mark was reached, but growth after that was rapid. In the last full school year, some 4,125 persons received degrees from MSU.



Cigarette Use To Show 'Modest Gain' in 1963

Washington — UP — The Agriculture Department has forecast cigarette consumption in the United States will show a "modest gain" in 1963 over the 510 billion that went up in smoke in 1962.

The department estimated cigarette output in 1962 at a record 537 billion, up 8 billion from 1961. Of this amount, 496 billion were smoked in the United States, 14.2 billion were used by overseas forces, more than 3.1 billion went to Puerto Rico and other U.S. islands, and 23.3 billion were sold on the export market.

The department said that while consumption and output of cigarettes set new highs for the sixth consecutive year, the annual rate of increase slowed appreciably compared with other recent years. The agency said the publicly concerning cigarette smoking and health may have been a retarding factor during the past year, and there may be some carry-over of this influence into 1963.

Cigarette consumption seems likely to show a modest gain in 1963, however, because there will be more people of smoking age, and some increases in economic activity and consumer income are expected.

Savannah To Reach Portland Friday

Portland — UP — The NS Savannah, the world's first nuclear-powered ship, will arrive here Friday afternoon for a visit.

The vessel is scheduled to leave Astoria at 7 a.m. and is scheduled to arrive at Portland at 3 p.m.

The Savannah, which is a joint project of the Atomic Energy commission and the Maritime Administration, will be greeted by a flotilla of yachts along with fireboats and helicopters.

The ship is scheduled to be docked at Terminal No. 4. It will be open to the public from Saturday to Wednesday from 9 a.m. to 4 p.m.

This Week's Plan for Home Builders

By HIAWATHA ESTES

There are many ways to make a house seem larger than it actually is. A generous amount of glass extends the walls visually. An open floor plan allows rooms to appear more spacious. A readily accessible rear patio guarantees privacy and can double as an extra room for several months of the year. This design offers all of these advantages and many more.

Although this is not a large home, it does pack a great amount of good, leisurely living into a limited area.

A wide entry is well lighted by a glass panel located next to the front door. Just off the entry is the living room, den, family room and bedroom hall.

The living room has been especially well planned for the arranging of furniture. High windows are on each side of the fireplace which has been located so as to take up as little space as possible in the room.

By arranging the den— or third bedroom—so conveniently to the entry and completely separated from the remaining two bedrooms, its use is much more flexible. It could be used as an office, a TV room, a guest room or as a private suite for an in-law that might be living with the family.

The family bath features a pullman lavatory with storage below, a semi-partitioned water closet and an enclosed tub with shower over. The second bath is accessible from both the den and the service. The convenience of such a bath location protects your house from much of the wear and grime that would otherwise occur from children tracking through the house.

The patio can be reached from both the family room and hall. The hall door has panes of glass to assure a well lighted hall.

The family room is partially open to the kitchen. To behold the gleaming beauty of this modern kitchen will bring enjoyment and anticipation of care-free living convenience to your entire family.

The center of interest of the contemporary exterior is the large picture window at the front of the living room which is flanked by stone veneer and vertical wood members. A low stone planter projects past each side of the window.

Complete working drawings for this plan can be purchased at a cost of \$7.50 for the first set and \$5 for each additional set when ordered at the same time. This plan will be available at these prices until April 16. Please allow two to three weeks for delivery. The following home plan books are also available: Hallmark Homes \$1; Award Homes, \$1; Town and Country Homes, \$1; Homes for Living, \$1; Homes of Distinction, \$2; Ranch and Modern Homes, \$2. All books, a \$7 value, only \$5. Send all orders for either plans or books to: Hiawatha Estes, post office box 404-T, Northridge, Calif.

STAR GAZER

By CLAY R. POLLAN

Your Daily Activity Guide According to the Stars.

To develop message for Sunday, read words corresponding to numbers of your Zodiac birth sign.

ARIES	TAURUS	GEMINI	CANCER	LEO	VIRGO
APR 21-20	APR 21-20	MAY 21-20	JUNE 21-20	JULY 21-20	AUG 21-20
1-16-27-38 45-56-67-78	1-16-27-38 45-56-67-78	1-16-27-38 45-56-67-78	1-16-27-38 45-56-67-78	1-16-27-38 45-56-67-78	1-16-27-38 45-56-67-78

LIBRA: SEPT. 23-22, OCT. 23-22, NOV. 23-22, DEC. 23-22

SCORPIO: OCT. 23-22, NOV. 23-22, DEC. 23-22, JAN. 23-22

SAGITTARIUS: NOV. 23-22, DEC. 23-22, JAN. 23-22, FEB. 23-22

CAPRICORN: DEC. 23-22, JAN. 23-22, FEB. 23-22, MAR. 23-22

AQUARIUS: JAN. 23-22, FEB. 23-22, MAR. 23-22, APR. 23-22

PISCES: FEB. 23-22, MAR. 23-22, APR. 23-22, MAY 23-22

Good Adverse Neutral

VAN LEE'S GIANT

Price-Smashing PRE-INVENTORY CLEARANCE

- Boy's Insulated Suits** Only 14 left Each **\$6.33**
- TV TABLES** Black Finish Each **\$1.99**
- EasyOff Oven Cleaner** Reg. 98c Each **59c**
- Champion Hand Cleaner** Reg. \$1.50, 3-Lb. Can—Each **66c**
- COCOA MATS** Keep that rug clean. Reg. \$1.29 Each **66c**
- Electric Drop Cords** 15', black with bulb guard. Reg. \$2.98 Each **88c**
- Plastic Drapes** 2-panels 36"x88" Your Choice Pair **69c**
- Men's Broadcloth Shorts** 3 PAIR For U.L. approved, (does not include cord) Reg. \$2.50 Each **66c**
- Car Seat Belts** 6000 lb. test, metal to metal; turquoise, brown. Reg. \$6.95 Set **3.33**
- Plastic Shelving Liner** 9 ft. plastic; turquoise; Cut to size you want; Reg. 79c Roll **39c**
- Sweat Shirts** White; sizes 6 thru 12. Reg. \$1.79; Your Choice Each **44c**
- Dermassage Lotion** Reg. \$1.79 Bottle **1.22**
- Wash and Polish Mitts** For Cars—Reg. \$1.39 Each **59c**
- Circus Peanut Butter** with real butter in it. Reg. 69c Jar **2 jars 88c**
- 3 Minute Brand Popcorn** Reg. 69c Bag **49c**
- Eveready Batteries** Reg. 20c **2 for 25c**
- Electric Vaporizer** Gal. Cap., UL Approved Reg. \$4.95 Each **2.66**
- Automatic Vaporizers** Reg. \$8.95 Each **4.66**
- Heating Pads** 3-Way Control. Reg. \$3.95 Each **1.88**
- 6-Transistor Radios** Complete with earphone, carrying case and battery Each **7.77**

NOW IN FULL PROGRESS!

Such fantastic values are hard to believe but we assure you that they are true — just come in and see these and many more — only, HURRY! Sale Ends Soon!

BATHROOM ORGANIZER

Heavy chrome finish, 3 shelves, ideal for shelf space over bowl. Only **77¢**

5 Gal. Plastic JERRY CANS Reg. 3.95 **\$2.33** Ea.

REG. 69c O-Cel-O SPONGE PACK

10 Sponges 44¢

Battery Booster Cables Set of 2 Reg. 2.00 **\$1.22** Set

ELECTRIC PERCOLATOR ★ 2 to 9-Cup Capacity ★ Safety Thermostat ★ Regular \$6.95 ★ Does Not Include Cord **\$2.99** Ea.

Fold'N Carry STOOL Reg. \$1.19 **88¢**

MICROSCOPES With Movable Stage and Light 150x300x600 Power Triple Revolving Turret. Sturdy All Metal Construction. Inclined up to 90 Degrees. Ideal for any College or High School Student. Not a toy. Reg. 10.95 Ea. **\$4.88**

Microscope Set For Beginners 100x200x300 Reg. 3.98 Set **\$1.77**

POOLE'S, INC. NEW YEAR'S SPECIALS

1952 PAN AMERICAN 8x35, 1 Bedroom	SAVE
1956 SPARTAN 8x41, 2 Bedroom	SAVE
1958 FLAMINGO 8x35, 1 Bedroom	SAVE
1958 HI-WAY CRUISER 15' Travel Trailer	SAVE
1959 BOLES AERO 8x28, Twin Beds	SAVE
1960 MELODY HOME 10x55, 2 Bedroom	SAVE

SEE THE PAN AMERICAN 20-Foot WIDE

Don't Miss Seeing This Big—2 Bath, Completely Furnished Mobile Home. Beautiful Italian Provincial Furniture. See it to believe the size and comfort **\$14,000⁰⁰**

New 10x55 2-Bedroom CUSTOM FLEETWOOD Was \$5995.00. Now \$4595.00 **SAVE \$1400**

New 10x55 2-Bedroom ELCAR Was \$6595.00. Now \$5195.00 **SAVE \$1400**

New 10x55 3 Bedroom ELCAR Was \$6395.00. Now \$4995.00 **SAVE \$1400**

New 10x54 2 Bedroom DETROITER EXPANDO Was \$6295.00. Now \$4895.00 **SAVE \$1400**

New 10x55 2 Bedroom PANORAMA. Was \$7095.00. Now \$5695.00 **SAVE \$1400**

Note: All the above new mobile homes are furnished, double insulated and have storm windows.

POOLE'S MOBILE HOMES

1122 South Riverside Phone 773-3732

Vegetable Bins Plastic, stack type Beige or turquoise Reg. 77c **1.50** Ea.

Melmac Dishes 45 Piece Set Guar. one year Reg. 21.95 **\$11.11**

Beacon Blankets Washable Deluxe Size Moth Proof Reg. 5.95 **\$2.88** Ea.

Tackle Box All Steel Ea. **88¢**

FREE! ALL CHROME COOKIE CAN (REG. PRICE \$3.29) with purchase of matching all chrome 4-pc. canister set Reg. \$10.98 **NOW \$5.99** For all

45 RPM RECORDS Regular 89c, your choice **5c**

33 RPM RECORDS, values up to 2.98, your choice **59c**

3.00 PAINT BY NUMBER SETS **1.44** set

2.00 PAINT BY NUMBER SETS **99c** set

1.00 PAINT BY NUMBER SETS **59c** set

KING SIZE TRAY TABLES Set of 4 Brass Legs Scaloped tray design rack on casters. Regular 7.95 Set **\$4.44**

Genuine Fiber Glass Trays. Set of 4. Rack on casters. Regular 15.95 **\$6.99**

Rempel Horses 19.95 Peter Pan Rocking Horse ea. **\$9.11**

9.95 Fleecy The Lamb Roller ea. **\$4.66**

9.95 Frisky The Roller Horse ea. **\$4.66**

CAR COATS Girls — Sizes 5 & 6 Only. Complete With Hoods Reg. 4.95 **\$2.33**

HAIR CLIPPERS Made by Wahl Clipper Corporation. 7 piece set in carrying case. Reg. \$5.95 Set **3.88**

Radiant Type **ELEC. HEATERS** Reg. 12.95 **\$6.88**