

Southern Rhodesia's Voters Could Bring Civil War Threat

By PETER LYNCH
 United Press International
 Salisbury — (UPI) — Southern Rhodesia's voters go to the polls Dec. 14 to choose between racial integration or a version of South Africa's

apartheid segregation policy. The outcome could end the pro-integration regime of Premier Sir Edgar Whitehead and, if the Racialists win, bring Southern Rhodesia under threat of civil war.

Freedom Center Order Requested

Salem — (UPI) — The Marion county district attorney has asked the circuit court to order Portland's Freedom Center and its director, Walter Huss, to file statements of campaign expenses in connection with the Nov. 6 election.

The request for the order was filed by District Attorney Hattie Kremen.

Secretary of State Howell Appling Jr. had asked Huss to file a statement because of the distribution of a pamphlet about Rep. Edith Green, Democratic candidate for Congress. She was reelected.

Huss denied his organization was political and denied any campaign activity.

Appling turned the case over to the district attorney for "appropriate action."

Young Peace Corps Hostage Released

Singapore — (UPI) — Fritz Klattenhoff, 19, Battleground, Wash., a member of the Peace Corps held hostage four days by Borneo rebels, was released unhurt by British Commandos Wednesday.

Klattenhoff was taken prisoner with six Europeans when Nationalist rebels captured the town of Limbant, in the British colony of Sarawak on the island of Borneo, last Saturday. All were safe and sound.

Six British Commandos were killed recapturing Limbang Wednesday in a mop-up operation against rebels who attempted to push the British out of Sarawak, Brunei and North Borneo.

Whitehead recently defined as "government by the civilized, regardless of color."

Before the election campaign started Whitehead told a party congress that to create a non-racial state all racial discrimination must be swept away.

An election victory for the United Federal Party (UFP) he said, would mean an end to all residential segregation of the races; secondary schools would be integrated and the African franchise broadened.

Sir Edgar made clear, however, his opinion that handing over the government to the country's non-white majority would lead to total chaos. He foresaw a period of at least 10 years before the doors to political power could be opened for all citizens, black or white, on completely equal terms.

Whitehead's official plank is "non-racialism." His United Federal Party is based on the principle of "racial part-

nership" which Whitehead recently defined as "government by the civilized, regardless of color."

With the UFP's right wing silenced, the program finds its strongest white opponents in the Rhodesian Front party. This party advocates a racial policy along South African lines, with residential segregation as its main feature.

The Front party has its strongest support in the rural areas where white farmers fear that African advancement will mean the end of

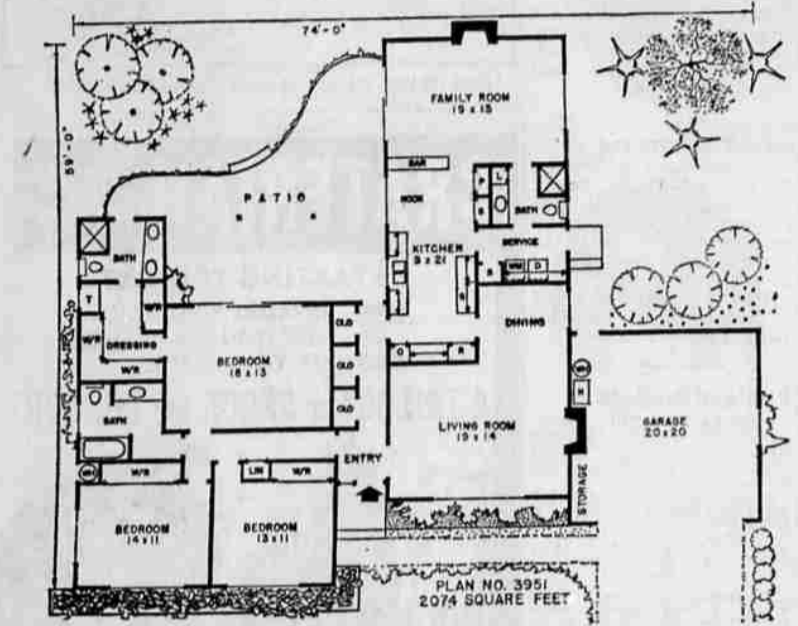
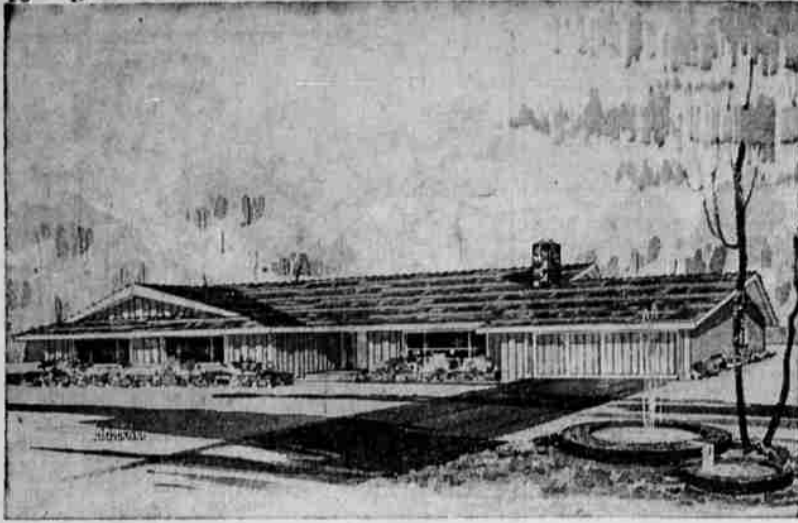
cheap labor. But it is also gaining support among urban whites who are shaken by the speed of desegregation.

When Whitehead banned the African ZAPU party on charges of incitement to violence and restricted its leader Joshua Nkomo to his home area, he certainly increased his chances at the polls. Many settlers, however, make no secret of their fear that "partnership" will soon get out of hand and Whitehead may have a stiff task convincing them that compromise is bet-

ter than conflict. African opinion is solidly against Whitehead, but Africans will have no chance to affect the outcome of the election.

With the ZAPU party banned and no other to take its place few Africans are expected to vote at all. The big question is whether the racialist Rhodesian Front party can oust the "non-racial" Whitehead government.

If it does, most observers here think Southern Rhodesia is in for serious trouble — not excluding a black uprising.



This Week's Plan for Home Builders

By HIAWATHA ESTES
 Farsighted home builders realize the advantage of planning ample recreation and living space for all the family from the very beginning, rather than attempting to add or convert rooms later. This home not only provides a generous living-dining area but also a large family room which is partially open to the kitchen.

The following home plan books are also available: Hallmark Homes, \$1; Town and Country Homes, \$1; Homes for Living, \$1; Homes of Distinction, \$1; Ranch and Modern Homes, \$2. All books, a \$7 value, only \$5. Send all orders for either plans or books to: Hiawatha Estes, post office box 494, T. Northridge, Calif.

A maximum of privacy has been achieved by locating the informal living area to the rear of the design. The family room is completely separated from the more formal living room so the grown-ups and teenagers can easily entertain at the same time without one group necessarily interfering with the other. Sliding doors open from the family room to the huge patio. A shoulder high window in the opposite wall allows flexible furniture arrangement and cross ventilation.

The family living center and the food preparation center, together, offer all the atmosphere of the much loved "country" kitchen. Here, cooking, eating and family activities are centered. Note the large six eating area and the wealth of storage space, including a built-in storage closet next to the pantry.

Three-Quarter Bath
 A three-quarter bath is ideally located off the service area for multi-use as it also opens to the family room. It features a pullman lavatory as do the other two baths.

When you separate the sleeping and living areas, you not only reduce noise and traffic but end up with a very efficient operating plan. These areas are separated here by the entry and hall which opens to the patio.

Both the living and family rooms have fireplaces which are located on outside walls so as not to take up living space in the home.

A housewife's dream is the generous amount of storage space. There are nearly 60 lineal feet of closets and wardrobes.

All bedrooms are spacious. The master bedroom in addition to having its own bath and dressing room has sliding glass doors opening to the partially roofed patio.

Clean modern textures of stone, glass, wood and cedar shakes have been used in the design of the street exterior of this contemporary home.

Complete working drawings for this plan can be purchased at a cost of \$7.50 for the first set and \$5 for each additional set when ordered at the same time. This plan will be available at these prices until April 9. Please allow two to three weeks for delivery.

COSTLY
 New York — (UPI) — One deep sea oil drilling rig may cost as much as \$4 million to design and build, according to the American Petroleum Institute.

BREAK FOR DRIVERS
 New York — (UPI) — For the first time in 17 years, gasoline taxes did not go up in 1962 in the United States, the American Petroleum Institute reports. Not a single state raised its gas tax.

PHOTO EQUIPMENT RENTALS!

- 35 MM CAMERAS
 - POLAROID CAMERAS
 - 8 MM MOVIE CAMERAS
 - 8 MM PROJECTORS
 - SLIDE PROJECTORS
 - TAPE RECORDERS
 - MOVIES
 - SCREENS
 - EDITORS
 - LIGHT BARS
 - SOUND PROJECTORS
 - FLASH UNITS
- HUDSON'S** ROGUE CAMERA SHOP
 613 East Main St. Phone 773-4288

MEN'S SHOE DEPARTMENT — STREET FLOOR

Mann's
 MEDFORD

773-7484

Jarman
 SHOES FOR MEN

in Jarman shoes you are
TWO FEET DEEP IN COMFORT

We invite you to test any pair of our Jarman... we know they will give full satisfaction, because each Jarman pattern is carefully "wear-tested" for comfort before ever being produced. Durable, easy-to-shine "Cordovan" leather.

16.99

Mann's
 MEDFORD

14 N. CENTRAL --- 215 E. MAIN

"Make it Merry" with sportshirts from Mann's...

FOR THE MOST COMPLETE SELECTION OF BETTER SPORT SHIRTS IN MEDFORD SHOP THE TREMENDOUS SELECTION OF FAMOUS BRANDS IN STOCK NOW . . .

A. 100% Corina Corduroy . . . Mann's own Director Brand. Green, blue, red, or antelope. **3.98**

B. Arrow "Chevelle", soft brushed suitings, imported European brushed rayon plaids. Soft ombre patterns. **6.95**

C. McGroom's fabulous "Million Mile" sportshirt . . . the best traveling companion a man can have . . . easy care 65% dacron polyester, 35% fine cotton. **5.95**

D. Washable wool blends in checks, plaids . . . Mann's own Director brand. 85% wool, 15% nylon. **7.95**

E. Fine West Coast suitings, soft tones of blue, tan or green. Completely washable. The look of fine wool in the firm finish of rayon suiting. By Arrow. **7.95**