

BIG PRE-VENTORY SALE CONTINUES

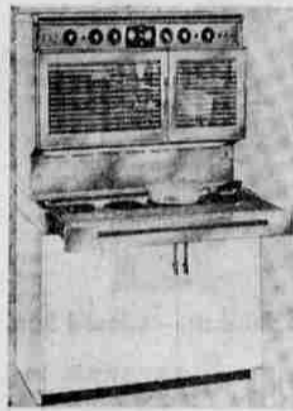
A BOLD STEP FORWARD

New TAPPAN

"FABULOUS 400" ELECTRIC RANGE

Brilliantly new and different from any range you've ever seen or dreamed of...and the most practical, too!

NOW AT A PRICE EVERYONE CAN AFFORD!



Model ECKNR-442

40" DOUBLE OVEN

List Price \$589.95

Special Sales Price **\$419.95**

Model EV 436 30" RANGE—List \$369.95 New Only... **\$259.95**

Model EV 430 30" RANGE—List \$329.95 New Only... **\$239.95**

FREE!

With your purchase of any of the above ranges BEAVER will give you a reg. \$69.95 Lazy Susan Base Cabinet.

THERMADOR WALL HEATERS

AMERICA'S FINEST

• A Heater in Winter • A Fan in Summer
THERMOSTATICALLY CONTROLLED MODELS



Catalog No.	Watts	Output BTU 1 Hr.	List Price	Sale Price
NB-162A	1650	5,630	\$50.00	\$32.50
NW-202A	2000	6,824	79.00	49.95
NW-302A	3000	10,236	86.00	54.95
NW-402A	4000	13,648	89.50	57.50
NW-452A	4500	15,354	93.00	59.95

3 PC. QUALITY BATH SET



- Top quality enamel steel tub
- Close coupled reverse trap toilet
- Choice of 3 different lavatory basins (18"x20") built in, 18" round or wall hung.

LIST \$129.50

Special Sale Price **\$75.00**

White Only—Less Fittings



BRIGGS
Kitchen Sink COMPLETE

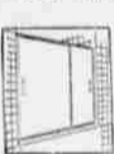
- 32x21 enamel steel double sink
- Deck Faucet with cast spout
- 2 basket strainers
- 32x21 stainless steel rim

REG. \$49.50

Special Sale Price

\$29.95

TUB ENCLOSURE

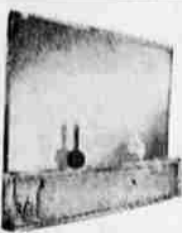


List \$47.50
SALE PRICE **\$29.95**

Easy to install, keeps water off your bathroom floor.

LIGHTING SALE CONTINUES

UP TO **65%** OFF LIST



Medicine Cabinets
18x32 • 24x32
30x32 • 36x32
42x32
\$19.95 to \$40.50
Values
Special Sale Prices
\$11.95 to \$28.95
From to

Light Bulbs 60W, 75W 8 for **\$1.00**

Range Hood List \$31.00 **\$16.95**

Portable Heaters List \$19.95 **\$12.95**

Garbage Disposals List \$49.95 **\$26.95**

Galvanized Pipe 1 1/2" - 2 1/2" Lengths **10c.**

Prices Effective Till Christmas
Check Our Store For Many Unadvertised Items!

BEAVER ELECTRIC & PLUMBING SUPPLY COMPANY

2740 No. Pacific Hwy. Phone 773-4549

Agents Battle Weather To Study Big Game Herds

To big game hunters the hunting seasons may be over for the year, but to game biologists in all game districts of the state, the hunting season for them is just getting underway.

For winter is the time of the year when these game agents travel far and wide inventorying Oregon's big game herds. It's an annual task that begins shortly after the hunting seasons and continues through the winter into March and April.

First phase of the big game inventories is herd composition studies to determine the ratio of bucks, does and fawns on each range. Game biologists begin gathering herd composition information immediately after the hunting seasons close when they make a systematic survey of all big game ranges. All animals observed are classified as to sex and age and expressed in a ratio of the number of bucks or bulls, fawns or calves per 100 adult females.

Before Antlers Shed
Herd composition must be completed before buck deer or bull elk shed their antlers. By mid-January, herd composition on deer is no longer feasible as bucks rapidly shed their antlers. Elk often retain their antlers as late as March before the massive beams are dropped and new growth begins.

Surveys are made on foot, by automobile, horseback and on some ranges by airplane. Almost without exception, surveys on antelope are made from the air, preferably when snow is on the ground. At this time the pronghorns are bunched on the winter ranges in the short sage country. Aerial observations at this time are quick, easy and accurate.

Some elk herds are also checked by airplane, especially in rough mountain country which prohibits other means of travel. Deer ranges are traveled primarily by horseback, although on some ranges, depending on snow depth, sample routes are run by automobile as well as foot travel by snowshoes.

No Deterrent
Weather is no deterrent, and the game agents must travel in rain, snow, wind and cold if the condition of big game herds is to be accurately determined. Throughout the winter months game agents hunt out the animals, watch them as they go through the winter, study food supplies, keep a critical eye on animal condition, record mortality, sex and age and the number of animals observed on each range.

Herd composition does not complete the winter surveys. About the first of February, game agents start all over again, this time to count animal numbers on each big game range. Observations continue until the herds disband with the spring break-up.

Herd composition may be conducted throughout the animals' range and at all elevations. But the annual census is confined more or less to the winter ranges at lower elevations.

Critical Time
This is the critical time of the year and the time game agents dread the most. If the winter is long and severe, they will witness first hand many animals dying from cold and hunger. This is little to worry about during mild winters, broken by periods of thawing and sunshine. During such winters animals remain scattered at all elevations.

Shrine Hospitals To Treat Fire Victims

Mobile, Ala. — George M. Klepper, imperial potentate of the Shrine of North America, said Wednesday his organization plans to construct three hospitals for the exclusive treatment of children burned in fires.

"These hospitals will treat burned children under 15 years of age without regard to race, creed or color," Klepper said. "They will be the first civilian hospitals established in this country for such treatment."

GIVES PARKING PRESENT
South Kingston, R. I. — The police department has presented shoppers here with a Christmas present — free parking until Jan. 1. Patrolmen Wednesday covered parking meters with cloth hoods marked "Merry Christmas."

of the winter range and manage to find enough food to remain healthy and alert.

But hunger is the driving force when snow piles deep or temperatures skid to sub-zero levels. Winter ranges produce only a limited supply of food, and when much of this is buried beneath deep snow, competition is keen for the meager supplies that remain.

Under such conditions many animals may starve before spring, with fawns the first to go followed by old animals and yearlings. Extreme cold may also take its toll, mainly of weakened animals unable from the meager

food supplies to generate body heat to withstand the frigid temperatures.

Permanent Routes
Permanent sample routes are followed on all big game winter ranges. Small winter ranges may have only two or three routes, while large ranges may have a dozen or more traversing at intervals from low to high elevations. These routes are traveled systematically year after year. All animals observed are recorded and expressed in the ratio of animals observed per mile of travel. Mortality is also recorded and expressed in the same manner.

Records on all ranges are kept year after year and comparisons are made to determine if the herds are increasing, decreasing or remaining constant. More than 7,000 miles of sample routes are traveled by game agents each year to determine big game population trends.

Winter surveys give an accurate picture of population trends, numbers of buck deer or bull elk in each herd, fawn or calf production, mortalities, range conditions, and food supplies. This and other information gathered around the calendar serve as a basis for the following year's hunting seasons.

1,582 Scholarships Awarded at U of O

Eugene — There have been 1,582 scholarships awarded at the University of Oregon for the 1962-63 school year, totaling \$508,076, the university scholarship committee has announced.

In addition, the committee estimated about 300 scholarships totaling \$30,000 were awarded directly to university students.

The 1962-63 figures include remission of out-of-state fees of \$330 each to 231 students from Alaska and Hawaii, totaling \$76,230. In previous years these students were not included in scholarship totals. Minus the Alaska and Ha-

State Library Board Of Trustees To Meet

Salem — The Oregon State Library Board of Trustees will hold its quarterly meeting in the state library here Friday, Miss Eloise Ebert, state librarian, said today.

Reg. \$6.95
Push Button
BASEBALL GAME
\$5.22

Reg. \$10.95
Magnetic
FOOTBALL GAME
\$7.66

Reg. \$6.95
Electric
FOOTBALL GAME
\$5.22

Reg. \$15.95
Electric
HOCKEY GAME
\$10.99

Reg. \$35.95
Rempel's
FLYING CLOUD
\$22.88

Reg. \$25.95
Rempel's
GOLDEN PALOMINO
\$15.88

Reg. \$19.95
Rempel's
PETER PAN PALOMINO
\$12.88

Reg. \$12.95
All Steel Wagon
RADIO FLYER
\$10.44

Reg. \$6.95
All Steel
SCOOTER
\$3.88

VAN LEE'S

It's the Place To Go for CHRISTMAS GIFTS!

SAVE! SAVE! SAVE!

on This Fabulous BUY: 27" Stroller Complete with 24" Vinyl Laxtex Doll.



Regular 9.95. Doll has movable eyes, Nursing bottle, sunsuit and socks.
Stroller & Doll **\$4.99**
Are Yours For Only.....

MELMAC DISHES



45 PIECES Reg. \$21.95 **\$14.88**
Guaranteed for 2 Years.....



Electric Percolator
★ 2 to 9-Cup Capacity
★ Safety Thermostat
★ Regular \$6.95
★ Does Not Include Cord
3.88 each

BEACON BLANKETS

- ★ Washable
 - ★ Allergy Free
 - ★ Moth Proof
 - ★ Regular \$5.95
 - ★ De Luxe Size
- Each **2.99**

ELECTRIC BLANKET



2-Year Guarantee
Pastels To Suit Any Decor
Single Control Double Bed Size
Reg. 21.95
\$9.99
You can't buy a better blanket for the price; we personally guarantee that you will be happy with this blanket. THE LOWEST PRICE IN MEDFORD!



SPECIAL
POLE LAMPS
UL Approved
Brass Finish
Regular 12.95
\$8.66

Reg. 99c CHRISTMAS COOKIE CUTTERS **69c**



INSULATED UNDERWEAR
Filled With DACRON!
100% NYLON Outer Shell
\$8.99 set
BOYS' SIZES 10 thru 16 **\$8.88** set

REG. \$6.95
\$4.88

VAN LEE'S Bazaar

127 N. CENTRAL... Home of LOW PRICES EVERYDAY

Reg. \$4.95
All Steel
WHEEL BARROW
\$2.88

Reg. \$6.95
FLOWERKIN DOLLS
\$3.88

Reg. \$3.98
Ny Lint
TRUCK & CAMPER
\$2.88

Don't Be Fooled—Buy The Best
Reg. \$17.95
6 Ft. Aluminum
TREES
\$10.88

Reg. \$2.95
15 Lite
OUTDOOR SET
\$2.33 Set

Reg. \$3.00
Craftint
PAINT BY NO.
\$2.22 Set

Reg. \$2.00
Craftint
PAINT BY NO.
\$1.33 Set

Reg. \$4.95
Hanson
BATHROOM SCALES
\$3.22