

Kiwanians Hear Thanksgiving Talk By George Bolster

"We can't starve ourselves and expect to survive," the Rev. George B. Bolster declared yesterday in a Thanksgiving talk to members of Medford Kiwanis club.

The rector of St. Mark's Episcopal church, speaking at the club's luncheon at Rogue Valley Country club, discussed "the more abundant living," saying that there is more to great abundance than fields

of grain, trees bearing fruit and laden tables.

The minister said that man, a complex creature, is subject to certain needs and urges. He listed mental, emotional, social and spiritual needs, as well as physical and said these needs must be satisfied to survive.

He quoted Christ's statement (John 10:10), "I came that they might have life and

that they might have it more abundantly."

Satisfy Material Needs

Man must satisfy some material needs to exist but, even in abundance of the materials, needs wise use of them. Mr. Bolster pointed out. People in this country have the ultimate in fine food, he said, but are plagued with physical disorders because of undisciplined eating habits.

"One of our most acute needs," he maintained, "is to learn to live and eat rationally."

On the matter of mental needs, knowledge and education, he pointed to the programs and commercials on television and asked, "Is that an index to our intelligence?"

Mr. Bolster reported, in connection with emotional needs, that 90 per cent of the cases he is involved in for counseling concern the failure of individuals to realize they have to deal with other individuals. "We have to cultivate and care for the personalities of those with whom we come in contact," he said.

The minister brought out that social life can be misused—that there can be too much rather than too little.

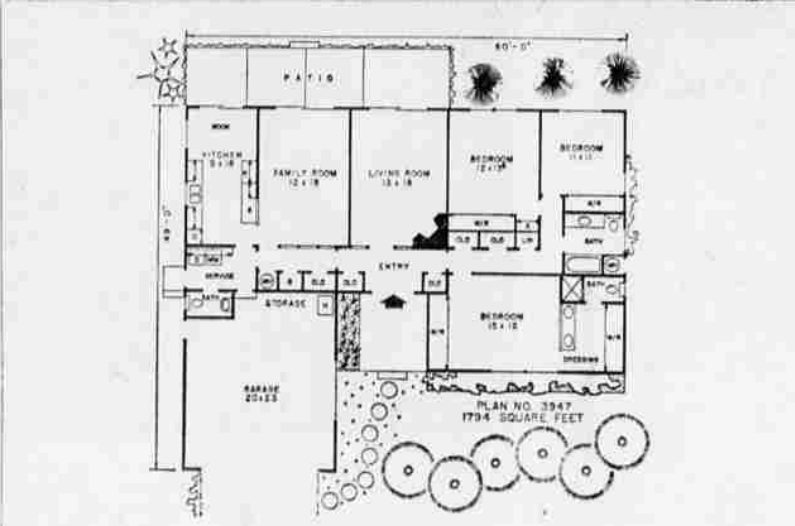
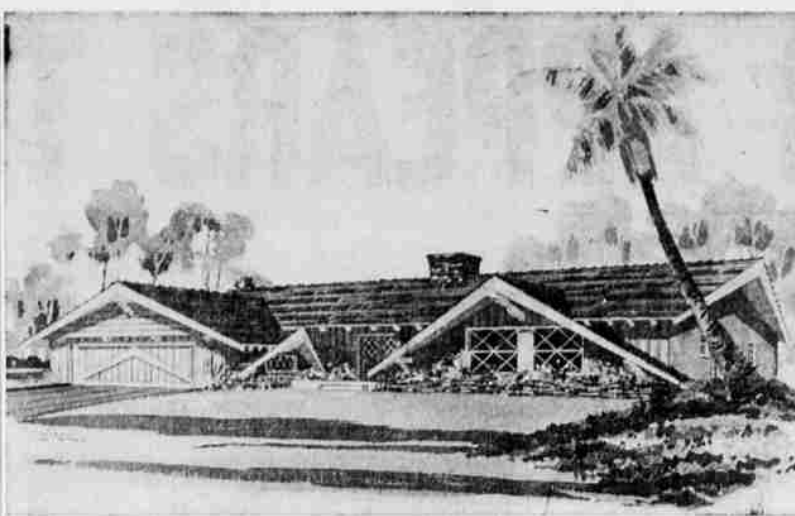
Spiritual needs are the most important of all, Mr. Bolster said. "One day each one of us will have to cross that line to the other life," he declared.

Portlander Guilty Of Manslaughter

Portland—UPI—Ralph Page, 48, Portland, was found guilty in circuit court here Wednesday of manslaughter.

Circuit Judge Virgil Langtry placed him on five years' probation. The manslaughter charge was reduced from a charge of first degree murder.

Page was accused of the fatal shooting of James Walters, 47, Portland, last June 26 in Portland.



This Week's Ranch and Modern Home

By HIWATHA ESTES

The exterior styling of this rustic ranch style home is a tasteful blend of friendly warmth and enduring quality. The focal point of the appealing design is the low gable roof which projects out from

the master bedroom wing. This roof is supported by band sawn corbels and extends down to within a short distance of the grade. The overall charm of this portion of the elevation is enhanced by the use of a low brick planter.

A low gable roof also projects out from the side of the garage to match the gable over the bedroom wing. To create additional design interest, the gable in the garage roof projects out from the wall where the garage door is located. The shaped rafters which have been used on each gable roof have been reproduced in the design of the garage door.

All the convenience of good modern planning are offered in this compact house where every inch of space has been planned for maximum use.

Double doors open to a wide entry from which there is excellent traffic circulation to all areas of the house.

Good planning has provided an unusual amount of storage area in this home. The bedroom wardrobes add up to a whopping 34'-6" in length. Storage drawers are located across the bottom of these wardrobes. There are eight closets opening onto the halls, and there is additional storage area in the oversized garage.

The master bedroom suite is entirely separated from the remainder of the house. Notice the two long wardrobes in this suite. A twin pullman lavatory is separated from the bedroom by a partial wall, 5'-6" high. A generous size shower and a water closet are in a separate compartment.

A water heater in the bedroom wing supplies instant hot water to both the baths. Another water heater near the service supplies the remainder of the house with hot water. This water heater could be located in the garage if preferred.

The kitchen, family and living rooms are flooded with light through the sliding glass doors which also offer an ever-changing view from these rooms.

Complete working drawings for this plan can be purchased at a cost of \$7.50 for the first set and \$5 for each additional set when ordered at the same time. This plan will be available at these prices until March 11. Please allow two to three weeks for delivery. The following home plan books are also available: Prize Homes, \$1; Award Homes, \$1; Town and Country Homes, \$1; Homes for Living, \$1; Homes of Distinction, \$1; Ranch and Modern Homes, \$2. All books, a \$7 value, only \$5.

Employees To Cast Ballots for Union

Portland—UPI—Eligible employees of three construction firms have received National Labor Relations Board ballots to vote on whether they want a union to represent them.

The union involved is the Technical Engineers and Architects Association, Local 17, AFL-CIO.

The NLRB office here said ballots will be counted Nov. 28 for the Donald M. Drake Co., Portland and the R. A. Herntz Construction Co. and White Brothers Construction Co., Inc. The latter two are a joint venture with offices in Portland and Walla Walla, Wash.

Eligible employees are working on John Day dam on the Washington shore and on projects at Roosevelt, Wash.

Grange News

Central Point Grange

The members of Central Point Grange were entertained by the White City Astronauts at a recent meeting. They presented a group of selections, and two violin solos were played by Enoch Pacheco.

Members of the group are Kenneth Haecher, pianist and manager; Sid Johnson, trombone; Arthur Kenton, clarinet and saxophone; Arthur Kenton, clarinet and saxophone; Enoch Pacheco, violin; Louis Nichols, accordion, and Bert Vastelica, drums.

Standing committees reports followed, with Arnold Bohner, agriculture committee chairman, stating grain

prices were same, hay prices higher, and that the 1962 crop of alfalfa will soon be shipped to Greece. The crop was 25 per cent short this year, he said.

Delmar Smith reported that cattle prices are good and feeders are moving. Edwin Gebhard reported on horticulture conditions.

HEC chairman, Mrs. Morris Frink, thanked everyone who assisted with the annual dinner. The next HEC club meeting will be Nov. 23, a work day starting at 10 a.m. Women attending are to take sack lunch and sewing equipment. Dessert will be served by the committee. Plans were discussed to

have the Christmas party Dec. 21. It will be an open evening for Grangers and friends.

The installation of officers will be held at the hall Sunday, Dec. 2, at 1:30, and at Eagle Point Grange hall on Dec. 9. The meetings are open to the public.

SHIP IT LASME

to or from Oakland, San Francisco, Los Angeles and other California points.

Call Jack Fitzgerald 773-7761

Noon Edition

Page 2A

MEDFORD MAIL TRIBUNE

MEDFORD, OREGON, THURSDAY, NOVEMBER 22, 1962

A PROPER SETTING for gentlemen!

"Virtue is like a rich stone... best plain set."

Francis Bacon's saying explains the growing popularity of our 'Botany' 500 "Natural Shoulder" clothing. Its clean-cut lines make the proper setting for a gentleman. Its proportions are truthful, with no false padding or other tailoring trickery. The fabrics denote dignity and good taste. And the quality workmanship bears the familiar "personal touch" of Daroff, tailors of all our 'Botany' 500 fine clothing.

Come in and let the store with the "personal touch" give you a showing.

Botany Suits from \$69.50

Others from \$39.95

'BOTANY' 500[®] tailored by DAROFF

BOBBETT'S STORE FOR MEN

Across from the Varsity Theater—Ashland, Ore.

Appliance giving means Easier Living

Now's the time to Lay-A-Way that perfect gift for Mom.

We Give **D.M.** GREEN STAMPS

6 Cycle + 2 Speed

Dependable—Big Capacity

- Flexible Controls
- Famous Maytag Agitator Action
- Swirlaway Draining
- Water Temperature Selector
- 2 SPEED ACTION
- Big Capacity Lint Remover Tub
- Full Time Safety Lid and Brake
- Zinc Coated Cabinet

MODEL A101

\$239

Multi-Cycle + All-Fabric

Halo-Of-Wash Dryer

- MULTI-CYCLE All Fabric
- Fully Automatic, Fully Flexible Controls
- Cool, Zinc coated Cabinet Protects Against Rust
- 180 Degree Safety Door Shuts Off Heat, Stops Action
- Revolving Filter Snaps Out, Filters ALL AIR in Dryer
- Gentle Circle Of Low Heat Surrounds Clothes, Ends "Hot Spots"
- Smooth Zinc-Coated Drum Won't Snag Clothes

\$179

We Repair Washers, Dryers, Hotwater Heaters, Ranges and Small Appliances

COMPARE and you'll buy the best! a KITCHENAID dishwasher

There's a KitchenAid for every kitchen... every budget!

BUILT-IN—KitchenAid built-ins are available in 3 series: Superba, Imperial and Custom. An almost limitless choice of front finishes to match any kitchen.

FRONT-LOADING CONVERTIBLE PORTABLE

Remodeling a problem now? Use the convertible as a portable now... build it in later. Available in Superba, Imperial and Custom series.

TOP-LOADING PORTABLE

If space or remodeling is a problem you can still have dishwashing freedom by KitchenAid.

No matter which model or price every KitchenAid gives you... Big Blue Wash Arm • Flo-Thru drying • Double-coated porcelain wash tank • Stainless steel filters.

COMPARE AND YOU'LL BUY THE BEST—KitchenAid!

COIN-OPERATED SELF-SERVICE LAUNDRY

• WASH 20c • DRY 10c

Open 24 Hours 7 Days A Week

"Serve Yourself and Save"

MAYTAG SHOP

1606 HIGHWAY 66 — ASHLAND, OREGON

482-3946

| | |
|--|---|
| <p>ROYAL Gelatin or Pie Filling Reg. 3 for 35c 5¢ Each</p> | <p>RUPERT Fish and Chip Dinner 16-oz. Pkg. Reg. 69c 39¢</p> |
| <p>Maxwell House COFFEE 1-Lb. Tin 49¢ 2-Lb. Tin 98¢</p> | <p>Shamrock Wheat or White BREAD Large 2 1/2-Oz. Loaf 4 for 98¢</p> |
| <p>MINUTE MAID ORANGE JUICE 6-oz. Tin — Reg. 2 for 51c 10¢ each LIMIT PLEASE</p> | <p>B & K LUNCHEON MEAT 12-oz. Tin 39¢</p> |
| <p>Star Kist Chunk Style TUNA No. 1/2 Tin—Reg. 37c 4 for 89¢</p> | <p>Gold Hill Freestone PEACHES No. 2 1/2 Tin 6 for \$1.00</p> |
| <p>TASTY BRAND FRANKS 39¢ Pkg.</p> | <p>Big Bologna By the Piece 39¢ Lb.</p> |
| <p>Pan Ready FRYERS lb. 39¢</p> | |
| <p>Cabbage Medium Size Crisp Solid Heads lb. 5c</p> | <p>Pink Grapefruit Indian River Florida 10 for 98c</p> |
| <p>Apples Crisp Red Rome Beauty 2 lbs 25c</p> | <p>Dates Fresh Calif. Unpitted 1 1/2-lb. Pkg. 45c</p> |
| <p>Stewart & King Prices Effective Fri. and Sat., Nov. 23 and 24. Limit Rights Reserved.</p> | |