

### Dr. Turner Named President of Local Cancer Group Unit

At the fifth annual meeting of the Jackson County Unit of the American Cancer Society, Dr. R. M. Turner, Ashland, was elected president for the fiscal year.

Dr. Abner Clark will serve as president-elect with Kenneth Wright, treasurer, and Mrs. Robert von der Hellen, secretary, all of Medford.

County Unit board members are J. R. Whitney, Mrs. Robert von der Hellen, Robert Ford, Robert Cronkrite, Mrs. Tom MacLeod, Ray Sorenson, Dr. James Quinn, Dr. Florian Shaskey, Dr. Ralph Odell, Dr. Otto Emig, The Rev. Robert W. Tull, all of Medford, and Phil Huntley, Ashland. Delegates to the Oregon Division annual meeting elected are Dr. Clark, Kenneth Wright, Mrs. T. C. Groomes, all of Medford, and Phil Selby, Ashland.

Report on Patients

Mrs. Ray Frisbie reported that 38 cancer patients in the county had received dressings and sick room supplies from the local loan closet during the past year. Dr. Clark reported that 75 films on cancer were shown last year and that a new film "Is Smoking Worth It" is now available, which brings teen-agers new scientific evidence pertaining to lung cancer.

Dr. Alfred C. Hutchinson, Portland, who was the guest speaker reported on the six-day session of the International Cancer Congress in Moscow, Russia, which was attended by 4,500 cancer experts from 67 nations.

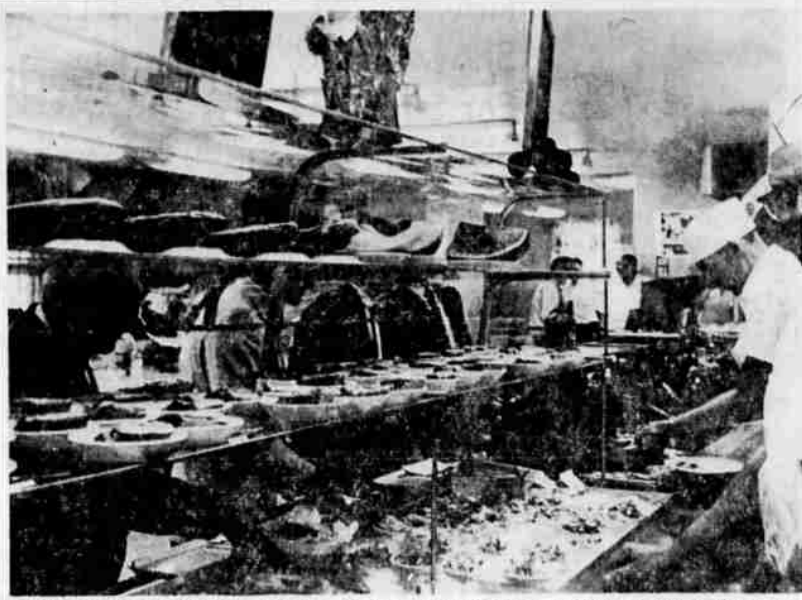
Much of the discussion was about the roll virus plays in producing cancer and some new ideas were presented as to how it brings this cell change about. Also discussed was the importance of DNA, which has been isolated from the virus, and how it is endowed with the property to produce cancer.

To date there has been no definite break-through in a cancer cure," Dr. Hutchinson said, adding that "The approved treatment for cancer still remains surgery and radiation."

**APOLOGY FOR PROGRESS**

Boston—The following sign appears on the back of a crane raising a building to clear the way for a downtown office building owned by a British company:

"Sorry to be making a bit of a mess. Office building coming. Progress you know."



**NEW FOOD COUNTER** - Officers of the Veterans Administration Domiciliary are first to try the new system of self-service. The improved facilities help members at

tendants to give instant service at this popular rendezvous for veterans, employees and visitors. Harry Caton, member clerk, snapped this picture before the food disappeared.

### The Medical Roundup

by *Walter Alvarez*

Emeritus Consultant in Medicine  
Mayo Clinic  
Emeritus Professor of Medicine  
Mayo Clinic  
(Register and Tribune Syndicate, 1962)

#### Nodules in Front Of Ear or on Neck

Quite a few persons ask me what should be done for a nodule or little teat either in front of the ear, or on the side of the neck—a nodule made of cartilage (gristle) or a little sac that was there at birth and perhaps recently has enlarged a bit.

In some cases, especially if the nodule causes disfigurement, it is well to have it removed by a surgeon. In some cases there is a slight danger of cancer developing in the cyst (little sac).

Microscopic examination of the nodule after its removal often shows that it is a remnant of a so-called branchial cleft. Such clefts appear on each side of the neck of the tiny embryo in its mother's womb, where they resemble

#### Physiotherapy and Parkinson's Disease

Dr. Lewis J. Doshay recently pointed out what probably few of us physicians know, and this is that with physiotherapy many patients with Parkinson's disease, who might otherwise become bed-ridden or in bad physical condition, can be kept on their feet and active. The results obtained with 100 patients chosen at random, and treated with medication alone, were compared with the results obtained with 100 patients who had had the benefit of both medication and physiotherapy, with massage, exercises, manipulation, special baths, etc.

The records showed that

three years after the onset of illness, there was not a single patient among the group treated with physiotherapy who had partial or total disability. While in the group treated with medicine alone, there were four cases of total disability and 11 cases of partial disability. Ten years after the onset of the illness, in the group treated with physiotherapy there were found only five cases of total disability, and eight cases of partial disability, as compared with 24 cases of total disability and 31 cases of partial disability in the group treated with drugs alone. This shows that it can be highly advantageous to a patient with Parkinson's disease to get good physiotherapy.

Additional information about Parkinson's disease is available in Dr. Alvarez' booklet, "Parkinson's Disease or Shaking Palsy." You may order it by sending 25 cents and a self-addressed, stamped envelope with your request for it to Dr. Walter C. Alvarez, Dept. MMT, The Register and Tribune Syndicate, Box 957, Des Moines 4, Iowa.



**ENTOMOLOGY PROJECT** - George Gilman, a senior in biological science at Southern Oregon college, works on a project sponsored by the National Science Foundation. He is studying entomology, doing population sampling and researching relationships between climate and flies. His work is being coordinated with that of five others. The goal of the group is to integrate findings on flies, plants and mammals in the Bear Creek watershed area of Jackson county. The undergraduate science education program provides special opportunities such as this for students of high ability to advance through independent research and study. Gilman is the son of Lester H. Gilman, 482 Beall lane, Medford.

## Plastic Pipe Plumbing Is Forecast in Homes by 1970

By DOROTHEA M. BROOKS  
United Press International  
New York—The promise of rigid plastic piping in home plumbing should be realized to some extent this year and by 1970 all-plastic installations should be common, according to the trade.

The pipe and fittings already are available. How soon they can be installed in most U. S. homes is going to depend not so much on the manufacturers, who are geared for production, but on the speed with which national standards groups and state and local building code authorities act to facilitate its use.

A Louisville fittings manufacturer, Tube Turns Plastics, Inc., affiliate of Chemtron Corp., says some installations of all-plastic piping in home plumbing will begin to appear this year in areas where special building code exceptions can be obtained. "Best guess by manufacturers is that city- or state-wide acceptance of plastics will begin snowballing in a year or two, starting in areas that have been most progressive in the past about recognizing new building materials," the company said.

Most recent developments, and the ones that have made complete plastic piping systems feasible, are those of the first plastic pipe that can handle hot water economically, and a line of fittings that are slimmer down from bulkier industrial proportions and designed expressly for household hot-and-cold water service at municipal water pressure, Tube Turns said.

Chief benefit of the thermo-

plastics as far as homeowners are concerned, is the likelihood that plastic piping probably will outlive the house as far as corrosion is concerned. According to Tube Turns, all are capable of withstanding indefinitely industrial corrosion attacks far more severe than home conditions, without incurring pinhole leaks or rusting at the joints.

In addition, the plastics are light in weight, running around one-sixth that of metals. They will not conduct electricity, can be joined in a manner that makes them permanently leakproof and impervious to encroaching tree roots in outdoor locations. They have low heat conductivity and minimize possibility of accidental burns and moisture-dripping, and smooth internal surfaces that reduce the likelihood of clogged waste drainage lines.

Although initial cost of materials probably will run slightly higher than for comparable metals, Tube Turns estimates that this will be

offset by immediate savings of 30 to 40 per cent in the cost of installation and further by reduced maintenance costs.

Lower over-all costs will reflect in good measure the ease and speed with which new pipe and fittings may be assembled. For instance, Tube Turns pointed out, a plumber, working from scratch, can make a joint in less than one minute, in sharp contrast with the difficulties that often arise in the threading of steel, sweating of copper or caulking of cast iron joints.

**THE BIBLE SPEAKS TO YOU**

Sunday, 9:00 a. m.  
K-SHA - 860 kc

This week's Christian Science program  
"Should Religion Heal?"—Part 1

## SOBBING SIMS IS NOW OPEN ALL DAY SATURDAY

- Bike Pedals . . . . . 66c pair
- Bike Mirror . . . . . 88c
- Bike Tires from . . . . . \$1.77

### ROLLER SKATES

Regular 5.95 WITH THIS AD 2.88  
OR  
Regular 2.95 WITH THIS AD 1.00

(Good Sat., Sept. 22 Only) ONE PAIR TO AN AD Supply Limited



**SIMS** Cycle & Hobby Shop  
23 N. Fir 772-2472

## THERE'S A NIP IN THE AIR

*Suddenly, it's Fall!*

HOW ABOUT A CUP OF COFFEE?

Reg. 29¢ Box 400 **KLEENEX** "SPACE-SAVER" BOX  
Facial Tissues **24¢**

NEW "300" KLEENEX Space Saver Box . . . . . 20c

**DELSEY Bathroom Tissue**  
Reg. 29c 1000 sheets (500 two-ply) . . . . . 25c  
2 ROLL PACK . . . . . 25c

**FILLER PAPER**  
Big 100 Wide Only . . . . . 23c, 5 for 88c  
Big 200 Wide, College & Narrow . . . . . 39c  
Big 300 Wide, College & Narrow . . . . . 59c  
Big 500 Wide, College & Narrow . . . . . 99c

**LUNCH KIT**  
By UNIVERSAL 10-Oz. Bottle \$1.69

**SPECIAL!**  
Redeem your **MICRIN** Coupons! AT YOUR WESTERN THRIFT STORE

REGULAR 69c 7-OUNCE SIZE SPECIAL WITH COUPON 49c  
REGULAR 98c 14-OUNCE FAMILY SIZE 69c  
NEW 20-OUNCE 12.99 ECONOMY SIZE 98c

MAKE IT BETTER WITH A **Deluxe** REG. \$29.95

## UNIVERSAL

*Coffeematic*  
for only **15<sup>95</sup>**



All the important features to make good coffee  
Makes any coffee taste better.  
Flavor selector with choice of mild, medium or strong. Exclusive fine mesh basket. Redi-lite signals when done. Automatically keeps hot for hours. Sparkling chrome over solid copper. Resistain® lining for easy cleaning. 4 to 10 cups.

ALSO BY UNIVERSAL THE "DELUXE" HAIR DRYER \$17.95 \$21.95 REGULARLY

**THE PINK PIG**  
Hiway 99 At The Talent Junction  
**SPECIAL**  
J. H. Hales  
BRING OWN CONTAINER **99¢** AN ORCHARD LUG

**BEST BUY IN TOWN**  
**Hotpoint**  
2 Speed 3 Cycle Washer  
**\$188**  
With Trade  
Just push a button for normal or gentle speed or adjust for any type load . . . safe for any fabric \* TRIPLE RINSING . . . Just spray, deep rinse, overflow rinse combined get out dirt and keep it from your clothes \* SEDIMENT SWIRL-OUT traps sand and heavy soil \* WRINKLE-FREE WASH'N WEAR tempers the clothes in cold water before spinning, keeps out wrinkles. \* ALL PORCELAIN CONSTRUCTION . . . it's built like the Hotpoint range, resists rust, stains, alkalis and acids.  
MATCHING DRYER ONLY \$157.00  
**Appliance Mart**  
132 So. Central, 772-4131

**BEST BUY IN TOWN**  
**Hotpoint**  
2 Speed 3 Cycle Washer  
**\$188**  
With Trade  
Just push a button for normal or gentle speed or adjust for any type load . . . safe for any fabric \* TRIPLE RINSING . . . Just spray, deep rinse, overflow rinse combined get out dirt and keep it from your clothes \* SEDIMENT SWIRL-OUT traps sand and heavy soil \* WRINKLE-FREE WASH'N WEAR tempers the clothes in cold water before spinning, keeps out wrinkles. \* ALL PORCELAIN CONSTRUCTION . . . it's built like the Hotpoint range, resists rust, stains, alkalis and acids.  
MATCHING DRYER ONLY \$157.00  
**Appliance Mart**  
132 So. Central, 772-4131

Like Pop once said, "A little learning is a dangerous thing."

Add Federal Excise Tax on Taxable Merchandise Free Delivery in Medford  
**WESTERN THRIFT**  
Rx PRESCRIPTION SPECIALISTS MEDFORD'S ORIGINAL DISCOUNT STORE 30 N. CENTRAL DIA 773-3371  
OPEN WEEK DAYS 8 TO 9 - SUNDAYS 9 TO 2