

School Enrollments Rising With Every Academic Year

Washington—Nearly 30 million public school students more than one in every five persons in the United States will be heading back to classes this fall after the annual summer recess.

These figures are projections of the way things will go if they continue as they have been.

And here's how they have been:

Students—Last fall 37,804,000 were enrolled in public elementary and secondary schools, an increase of 3.4 percent over the previous year. For the last 10 years, the average increase in enrollment has never gone below 3 percent.

Half-day Sessions—Although most of these students attended school full-time, over a half-million did not, primarily because of overcrowding and consequent half-day sessions. The problem was particularly acute in New York, with 104,000 pupils on short sessions. Florida, with 41,000, and Illinois with 40,000 on abbreviated schedules.

Teachers—Last fall there were 1,463,000 teachers in public elementary and secondary schools, an increase of 3.9 percent over the previous year. For the last 10 years, the average increase in the number of teachers has never been less than 3 percent.

The average public school teacher this year was paid \$5,827, a pay hike of \$252 over the previous year.

The ratio of pupils to teachers was 25.5 pupils for every teacher last fall—has also been dropping slowly but steadily. As far back as 1954 a public school teacher had an average of 28 pupils.

Association Aids Migrant Workers In Northern State—Puyallup, Wash.—(AP)—The migratory farm worker stands at or near the bottom of the social ladder in the United States, but the citizens of this agricultural community are trying to do something to improve his lot.

They have formed a non-profit corporation to extend a friendly hand to the thousands of migrants who annually follow the berry and hops harvest to the Puyallup valley, near Tacoma.

Through the corporation, migrants are provided with a medical clinic, visiting nurse service, nutritious supplements to their diet, legal advice, recreational facilities, religious instruction, use clothing and classes in reading and writing English.

The corporation, officially named the Puyallup Valley Migrant Ministries association, is financed through donations from residents of the area and from outsiders who like the program.

Charles Bond, a valley farmer, Puyallup city councilman and a member of the association's board of trustees, explained the citizens of the community wanted to help make life more pleasant for the migrants.

Migratory farm laborers often are foreigners who are brought to the U.S. for the harvest season and then are returned to their native countries. But even the American migrants are strangers wherever they might be.

Bond said his neighbors decided to make them feel at home.

The association provides a first-class one night each week. Physicists, dentists, optometrists, drugists and nurses volunteer their services.

Local attorneys give the migrants free legal advice.

Other citizens have volunteered to supervise recreational activities, sewing classes and reading and writing.

The association provides special literacy classes designed to teach English to foreigners and reading and writing to Americans who misread in school.

Good news the program provides religious activities but the association is not a missionary group.

A 50-cent membership fee makes it more than worth for a while," he said, "but they've come around to our way of thinking now."

'Stage' Bands New Additions To High Schools

The most "swingin'" addition to school music programs is the high school "stage" or jazz band.

Similar in style to the Dorsey and Miller congregations of 20 or more years ago, the stage band is the musical outlet that now enables teenagers to play the good popular music of the current and past several decades. Rock 'n' roll, not considered a part of the American jazz scene by most school musicians, is seldom played.

Stage bands have from 14 to 25 members and feature standard "big band" instrumentation: trumpets, saxophones, clarinets, bass, guitar, drums, accordion and piano.

These supervised music groups are usually after-school activities and are in addition to established school band and orchestra programs.

According to the American Music conference stage bands number 6,000 in every five high schools and will increase to 7,200 by next June. Ten years ago few high schools had music programs included this type of music group.

Texas, Missouri and Oklahoma high schools are most active, with 90 per cent having stage bands. Approximately 60 per cent of West Coast high schools have them, while every high school in the Denver, Col. school system has a stage band.

One major reason for the growth of stage bands, according to AMC, has been the four-fold increase in the number of school-age musicians since 1947.

In a North Texas State university poll of school band directors, 62 of 63 replied that stage band experience helped members of school symphony orchestras; more than half indicated that stage bands stimulated interest in over-all school music programs.

Almost all of 100 non-musical school officials queried were in favor of stage band activity.

Style, Roominess Wanted in Handbags

High scores in the fashion class this fall are large, spacious bags of smooth, grained, and suede leather that combine the roominess which a variety of boxes are favored.

A smart girl frequently carries a daytime clutch which doubles in leather as a dressy date bag. Leather colors this fall include gold, which complements all the fall apparel colors, sparkling greens, deep plums and earth browns.

For longer wear, good looks and economy, the smart girl looks for the black-and-gold "genuine leather" bag when she shops for her school bag.

Other silhouettes popular with teenage girls are the huge leather tote or "feed-bags" that hold "everything" including her lunch. Pouches, satchels, clutches and a variety of boxes are favored.

Food scientists at Sanford Research institute here have been investigating such new wheat products as wheat flour, wheat bran, wheat germ, and wheat chives. The candy, a toffee, was well received by institute tasters. They were less favorably impressed by wheat brittle candy and wheat caramel balls.

Global Television Seen As Coming Thing In Education

Washington—"The classroom of the future" may have grown far enough by 1964 that we shall be able to watch the Tokyo Olympic games on television at home."

While agreeing that global television is on the way, Vernon Brownson of the National Association of Educational Broadcasters feels that 1964 could make possible a full-scale attack on literacy 720 million people, or 45 per cent of the world's population, are estimated to be illiterate on a global basis; it could tele-teach sessions of the United Nations; it could help the exchange of research information as well as the sharing of world-wide scientific and cultural experiences; it could serve to transmit data between educational institutions.

NEA leaders say educators should be consulted on up-coming global TV plans to ensure a part in future developments. Global TV should be more than mass entertainment. There should be time reserved for programs of educational TV stations in operation in the United States.

James E. Webb, administrator of the National Aeronautics and Space Administration, believes that will happen when television systems through out the world are connected by space satellites and ground relay units.

And TV authorities at the National Education Association believe the communications satellite "would seem to offer countless educational possibilities; for example, it could make possible a full-scale attack on literacy 720 million people, or 45 per cent of the world's population, are estimated to be illiterate on a global basis; it could tele-teach sessions of the United Nations; it could help the exchange of research information as well as the sharing of world-wide scientific and cultural experiences; it could serve to transmit data between educational institutions.

Global Television Seen As Coming Thing In Education

number to double—perhaps triple—in the next five years. In 10 years, these people say, there will be 1,000 ETV stations, and an ETV network.

These predictions are based on a federal bill, signed into law last May, that authorized \$32 million to aid educational television. And efforts to force manufacturers to include ultra-high frequency reception in every set is also bound to help tremendously.

A study by the Institute for Communications Research of Stanford university produced these predictions for 1971: Every major school, college and university will have at least one closed-circuit TV system, primarily for demonstration, laboratory, and observation uses.

In the elementary and secondary schools, about a third of the students' class time will be spent in front of TV sets. At the college level, the percentage will rise to 50 per cent.

Large TV-taught classes will be balanced by small discussion groups, where questions can be answered, arguments put forth, and knowledge sharpened.

With the advent of widespread educational TV in the classroom and teaching machines and other new instructional aids will come more attention to the individual student, more reliance on independent study, new emphasis on team teaching, and greater recognition of superior teachers.

And the study made this point: educators seem to agree that "the changes are coming so much more rapidly in the future. The traditional 50-year lag that education has had since the introduction of a new idea into education and its actual adoption by a majority of schools will be much reduced. The temper of the time is favorable; the need is great; the tools seem promising. Television could improve our chance to realize the long-held dream of good, universal education."

ANNIVERSARY SALE AT SAFEWAY

Join in this big Money-Saving event with the Medford Safeway Stores in celebrating the Medford Shopping Center 3rd Anniversary!

Check these prices—know why we say you save more on Your TOTAL food bill at Safeway.

We Give Valuable Gold Bond Stamps

You get a bonus value at Safeway . . .

Food Savings Plus Valuable Stamps

Prices effective Thursday, August 23 through Sunday, August 26 at Safeway in Medford. We reserve the right to limit.

West Main at Oakdale Medford Shopping Center



- ### BACK-TO-SCHOOL BUYS
- Pencil Tablet Big Size 8x10 sheets each 29c
 - Filler Paper Narrow or Wide Rule, 200 sheets 49c
 - Lindy Pens Ball Point, economical 39c
 - Crayola Wax crayons—Package of 8 15c
 - Crayons All colors—Package of 16 25c
 - Binders Three Ring Canvas, Each 49c
 - Vinyl Binders Three ring, sturdy quality 79c
 - Vacuum Bottle Holtemp. Just right for soup. Pint 1.29

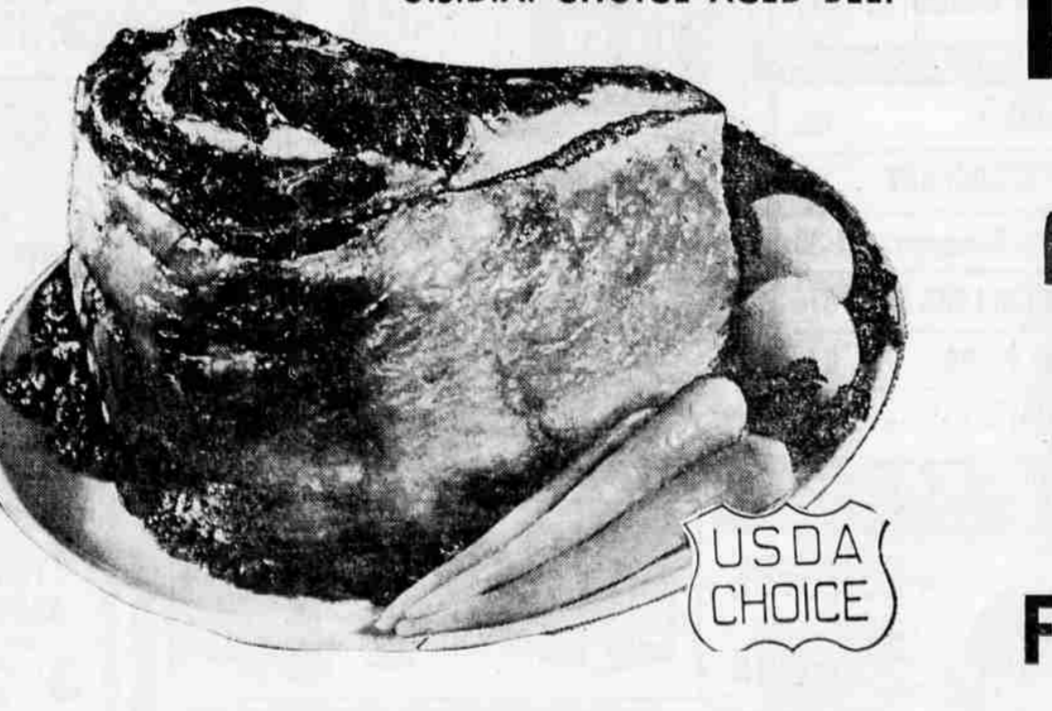
FREE BALLOONS and SUCKERS for the Kiddies!

The "King of Roasts" Family Favorite

RIB ROAST

69c

Safeway Rib Roast. A Better Buy for you. It's USDA CHOICE BEEF, the grade that means top flavor, tenderness, juiciness. It's properly aged in our own modern meat plant to bring it to eating perfection. It's trimmed before weighing. A Safeway Rib Roast is just the meaty center portion.



- ### SLAB BACON
- Dubuque brand. Fresh from the smokehouse! Full half or whole sides. **lb. 49c**
- Shady Oak **MUSHROOMS** Pieces and Stems **29c**
- USDA CHOICE **Spencer Steaks** "Eye" of the rib, lb. **1.49**
- Rib Steaks** Boneless, waste free. USDA CHOICE Beef, lb. **98c**
- Game Hens** Ideal for casseroles, lb. **79c**
- Lunch Meat** Hygrade Spiced lunch, non meat, 3-1/2" tin **1.29**
- Safeway's **Link Sausage** Mildly seasoned fresh "Little Pig" lb. **59c**
- Fishcakes** Captain's Choice. Meat & serve. 12-oz. pkg. **3/\$1**

PEACHES

RED HAVENS

Oregon grown, sweet, delicious. Now the time to can or freeze.

10c

lb.

FRESH BROCCOLI

Northwest grown. Loose stalks for your selection. **2 lbs. 29c**

- ### WELCOME
- To DREWS Manstore and WEISFIELD'S Jewelry who have joined our family of Shopping Center Firms. May you enjoy a Continued Success!
- ### BAKED GOODS
- Butterhorns Mrs. Wright's Package of 4 **39c**
 - Skylark Bread Slenderway and Pecan pack 15-oz. **29c**
 - Fresh Buns Plain or Sausage, Hamburger or Conv. buns, Pkg. of 12 **33c**
 - Cookies Ross Baker's Marshmallow Treats, Pkg. of 24 **39c**
 - Crackers Sunshine Kroger's soda crackers, 32-oz. **57c**

- ### YOUR MONEY'S WORTH MORE AT SAFEWAY!
- ## Toilet Tissue
- 1279c
- ## Star-Kist Tuna
- 389c
- ## Small AA Eggs
- 2 dozen 55c 29c
- Jam Shasta brand, strawberry, peach, apricot, apricot 44-oz. jar **89c**
 - MJB Rice Long Grain, 28-oz. pkg. **39c**
 - Fruit Cocktail Libby's Ass't. fruits, 303 can **4/\$1**
 - Highway Catsup Zesty flavor, 14-oz. bil. **2/39c**
 - Beverages segment sparkling flavors 12-oz. can **10c**
 - Heinz Spaghetti One-dish meal, 19 1/2-oz. can **5/\$1**
 - Potato Chips Blue Bell, 3-pack, 1 1/2-oz. pkg. **69c**
 - Libby's Peaches Freestone halves or slices, 2 1/2 can **35c**
 - Wheat Chex Ralston cereal, Family size, 18-oz. pkg. **35c**
 - Charcoal Briquets Royal Oaks 20-lb. **1.35** 10-lb. **69c**

COFFEE

- Folger's 2-lb. can **97c** 1-lb. can **49c**
- Instant Folger's, Save 20c 6-oz. jar **79c**
- Instant Folger's, Save 30c 10-oz. jar **1.29**
- Edwards 2-lb. can **93c** 1-lb. can **47c**
- Instant Edwards, Save 20c 6-oz. jar **75c**
- Instant Edwards, Save 30c 10-oz. jar **1.19**

- Peaches Red Haven, Oregon grown peak of season flavor lb. **10c**
 - Seedless Grapes Thompson seedless Large, juicy berries 2 lbs. **35c**
 - Green Onions and Radishes For Your salad 2 bun. **15c**
 - Orange Juice Pure juice, No additives Quart **39c**
 - U.S. No. 1 Potatoes Nated Gems, 10-lb. p/b bag **69c**
- ### Mix 'Em or Match 'Em
- Orange Drink Shasta or Grape
 - Apricot Nectar Town House
 - Hood River Combo Fruit Drink
- Stock up on delicious fruit drinks. 46-oz. can. **3 \$1**
- YOUR CHOICE! 3 For \$1**

WESSON OIL

For cooking or salads . . .

24 oz. bottle **39c**

ICE CREAM

Snow Star

Choose from these flavors:

Choc. Marble — Peach — Vanilla — Banana

Nut — Neapolitan — Choc. Marshmallow — Lemon Flake — Maple Nut — Butterfinger — Butter Brickle — Butter Pecan — Coffee.

59c

1/2 Gallon . . .

ORANGE JUICE

Bel-air Frozen Premium Quality

6 \$1

6 oz. can . . . For

PET FOOD

- Gamay Assorted Bar Soap Reg. **3/37c**
- Ivory Soap Pure, mild Medium bar **3/35c**
- Duz Laundry Detergent 23-oz. pkg. **69c**
- Cascade For Dishwashers 20-oz. pkg. **49c**
- Spic & Span Household cleaner, 34-oz. **99c**
- Zest Detergent Soap Reg. bar **2/33c**
- Ivory Flakes For fine fabrics 12 1/2-oz. pkg. **39c**
- Dreft Pink Detergent 18-oz. pkg. **33c**
- Ivory Liquid Detergent Save 4c—12-oz. **35c**
- Oxydol Laundry detergent 20-oz. pkg. **30c**
- Dash Hard-working Detergent 25-oz. **39c**
- Downy Fabric softener 17-oz. bottle **49c**
- Dips Lucerne party dips 8-oz. **49c**
- Drink Fruit Flavored Partland punch 12-oz. **49c**
- Pork & Beans Highway 24-oz. can **5/\$1**
- Chiffon Tissues 2-roll pack **29c**
- Wax Paper Zest 200-foot roll **39c**
- Lunch Bags Zest kraft pkg. of 20 **2/25c**

Calo. Save 2c. 15 1/2-oz. can. **2/27c**

