



CHAMPION PIE EATER - After devouring eight somewhat smaller pies, Joseph Oles, 12, right of Chicago, digs in for a mouthful of his prize as the winner of a pie eating contest at the Chicago Free Fair. He not only won the somewhat oversized pie but also a fine trophy for his Herculean epicurian efforts. Gazing on in numb astonishment is the second place winner, Craig Joly, 11, who seems to have lost his appetite. (UPI)



Small Worlds Around Us

By Lynn W. Watkins

Facts You Didn't Know About Pigs

Ordinarily a hog is a pretty solid citizen, placid and unruffled. He's usually only concerned with getting enough to eat, and with finding a cool, muddy spot where his body temperature can be kept within comfortable limits. These few wants supplied, the pig is happy.

The pig's owner, after reasonably close observation over a period of time, usually can tell by the animal's appearance whether the pig is pursuing a way of life conducive to contentment. The breeder can tell this by the position of the pig's tail.

The tail of a pig is about the same as a barometer is to a meteorologist: it tells conditions existing at the time. When the barometer falls, the weatherman looks for a storm; when the pig's tail drops, the owner seeks the trouble.

Not a Wag
Of course a pig doesn't wag its tail like a dog when it is pleased. But the hog's tail reflects whether its owner is happy or down in the dumps. If the tail is curled, and the animal grunts contentedly, it is pretty apt to feel "fit as a fiddle" and in a healthy condition.

But if the curl is straightened out, or hangs listlessly like a limp piece of rope, then the animal is sick and the owner takes what measures he can to restore the animal to good health.

It is a well-known behavior pattern to have a pig run away from an approaching person or disturbance of any sort.

Any animal, man included, will react accordingly. But a peculiar and little-understood action on the part of the surprised hog is the sudden direction switch the animal executes, for then it does the unexpected.

Into Reverse
In spite of itself, it will go into reverse; it will pivot. Whichever way it is headed makes no difference. When surprised it turns, instantly putting its head where, a second ago, its tail was; a complete reversal. And it makes this turnabout in the flash of a pork chop.

This silly switch may even place the animal's head right against the object that frightened it. Strange that every hog has this behavior trait; they can't help it. Why? Makes no difference how many hogs you may ask this question, the answer will be only a couple of grunts.

Parks Association Launches Study on Personal Training

A study was launched recently by the Oregon County Parks association to determine if there is a need for having trained personnel who are capable of directing, administering or managing all types of recreation programs or developments.

Laurance V. Espey, executive secretary of the OCPA, recently sent approximately 50 questionnaires to county courts and interested state agencies throughout Oregon to see if there is a "definite need" for a training program for recreation personnel.

The investigation is in preparation for a meeting with the state board of higher education; Dr. Elmo N. Stevenson, president of Southern Oregon college; Espey; and Charles Collins, OCPA president and executive vice president of the California Oregon Recreation Development association. The meeting will be held during the September sessions of the state board.

Exploring for Need
Espey said the association was "just exploring" now to see if such training for recreation management is needed and wanted. So far, he noted, about 20 questionnaires have been returned and a "definite interest" is apparent.

In submitting the questions, the OCPA notes that a need for personnel training courses reportedly has been evident for quite some time. Although some colleges and universities have classes in recreation management, the association continued, not too many students take advantage of it.

The various agencies were asked what they thought of such a training program and whether they had anticipated need for trained personnel in recreation work.

Other questions included: -Do you think that one or more of the Oregon colleges should offer a six or eight week course in recreation planning, operation and maintenance?

Personnel Available
-Do you have personnel available to take the course? -Could you use trained personnel in your present or future program?

-Do you think local high school graduates, who are capable but not able to go to college, would be interested in this type of recreation work? -Would your department or agency be willing to underwrite a part of the trainee's personal expenses?

Evaluation of the returns will help establish recommendations to present to the state board of higher education, Espey noted.



JUDGE-Superior Court Judge E. Avery Cray of Los Angeles, above, has been named by President Kennedy to be a U.S. District Judge for the southern district of California. Cray was chosen to succeed the late Judge Ernest A. Tolin. (UPI)

Use of Electronic Computers Valuable On Stock Exchange

New York - (UPI) - To the investor and trader in common stocks, what happens in the orderly hurly-burly of a stock exchange trading floor is of prime importance to his pocketbook.

For his knowledge of where he stands after a day's trading activities, he is becoming increasingly dependent upon the proceedings in some quiet, air-conditioned room which may be far removed from the trading floor; the center where his brokerage firm's computers go about their programmed business.

Convinced of Worth
The impact of the explosive volume of trading on the New York Stock Exchange and in other securities markets at the end of May, and the activity of occasional heavy days then, have convinced brokerage firms and their customers of the worth of computer equipment.

Charles Moran Jr., managing partner of Francis I. DuPont & Co., a firm which pioneered in the use of automated equipment to cope with the involved figuring on customers' accounts, said that the difference between handling all reports on the slowest and on the heaviest days of trading, with the firm's new equipment, probably is not more than two hours.

"Smaller firms will have to come to it too," he said. "Not all are able to obtain as complete a layout as we have done, and it is probable that in many cases they will go together to obtain equipment."

Edmond DuPont, the firm's senior partner, directed the firm's record-keeping toward automation back in the early 1940s, and the latest step, purchase of a \$1.5 million computer, brought the firm's investment in such equipment to a tidy \$2.5 million. "And all in use," said Moran.

DuPont has said that the firm recognized years ago that electronic data processing "was a must if the complex brokerage accounting problems of the future" were to be handled properly. He said the equipment which was in use at the time of the May big days "came through with flying colors."

ORDERS SHOW DECLINE
Bonn - (UPI) - West German industry received 1.8 per cent fewer foreign orders the first half of 1962 than it did during the same period last year, according to the Economics Ministry here. A ministry report issued Tuesday said domestic orders in the same period increased 2.1 per cent.

RECORD SAVINGS
New York - (UPI) - The Federal Home Loan Bank board reports Americans' personal savings rose \$8.9 billion to a record high of \$345 billion in the first quarter of 1962.

THE OREGON FUNERAL PLAN

Guarantees payment of last expenses. Insurable ages 1 to 90 years. Good anywhere in the world. Protects one or the whole family. For information, see us today!



C. M. Litwiler



Mrs. Litwiler

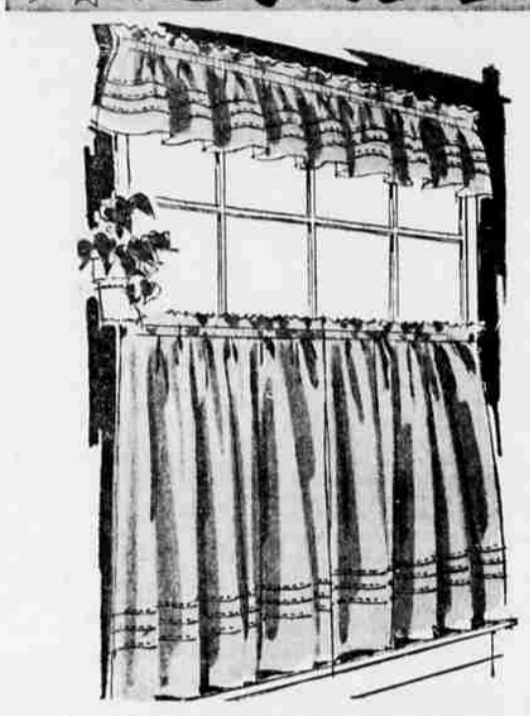
LITWILLER FUNERAL HOME

Highway 66 at Normal Ave. Ashland - Dial 482-2816



Ashland's Leading Funeral Director Since 1935

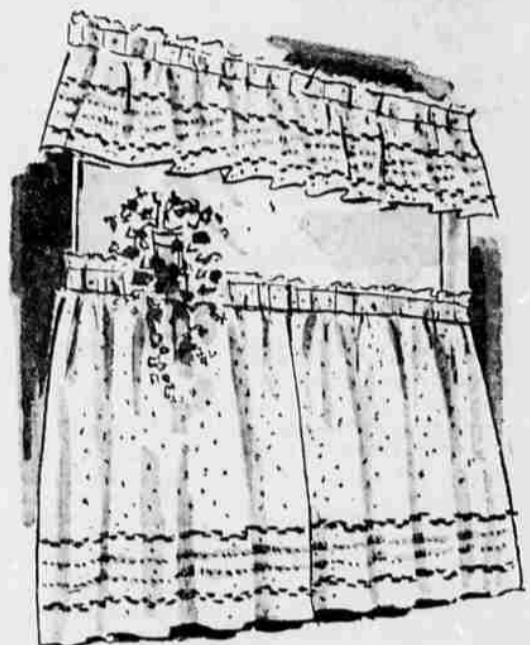
MONTGOMERY WARD
SALE FOR THE HOME
117 S. Central 773-7301 FREE PARKING OPEN FRIDAY 'TIL 9 No sale prices like Wards sale prices! And Wards savings now are super-size on furnishings for a room or an entire house!



16% off!
tier curtains

2 SMART, WASHABLE FABRICS

176
60x30" Tier
Reg. 1.98



TRI-TUC TIER (left). Washable rayon chalis. Beautifully tailored; side and bottom hems. Pink, toast, yellow, orange, green, white. Matching valance, 10" wide NOW 76c Yd.

NATURAL COLOR Osnaburg cloth (right). Heavy textured cotton. Washable; drip-dry! Brown, blue/green trim. Matching valance, 10" wide NOW 76c Yd.

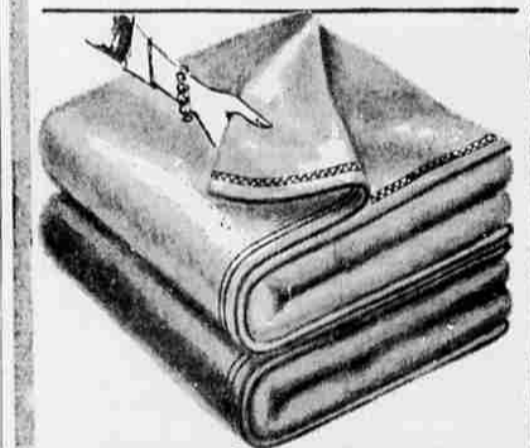


\$1 off foam pillow

ZIPPER PASTEL COTTON COVER

Look what you save on comfort now at Wards! Non-matting rubber latex core tapers from 5 1/2" thick crown for gentle uplift. About 18x26" finished size.

3 88
REG. 4.98



cotton sheet blanket

EXTRA LARGE IN WHITE ONLY

Not just an ordinary blanket, but famous Treasure Chest brand. Extra wide, extra long for greater comfort. Close woven cotton flannelette washes.

2 48
REG. 2.98
80x100"



Mattress or box spring
38 88
Twin or full size

Mattress or box spring
48 88
Twin or full size

510 coils . . .

SAME COIL UNITS AS IN OUR 59.95 MATTRESS—SEE HOW MUCH YOU SAVE AT WARDS!

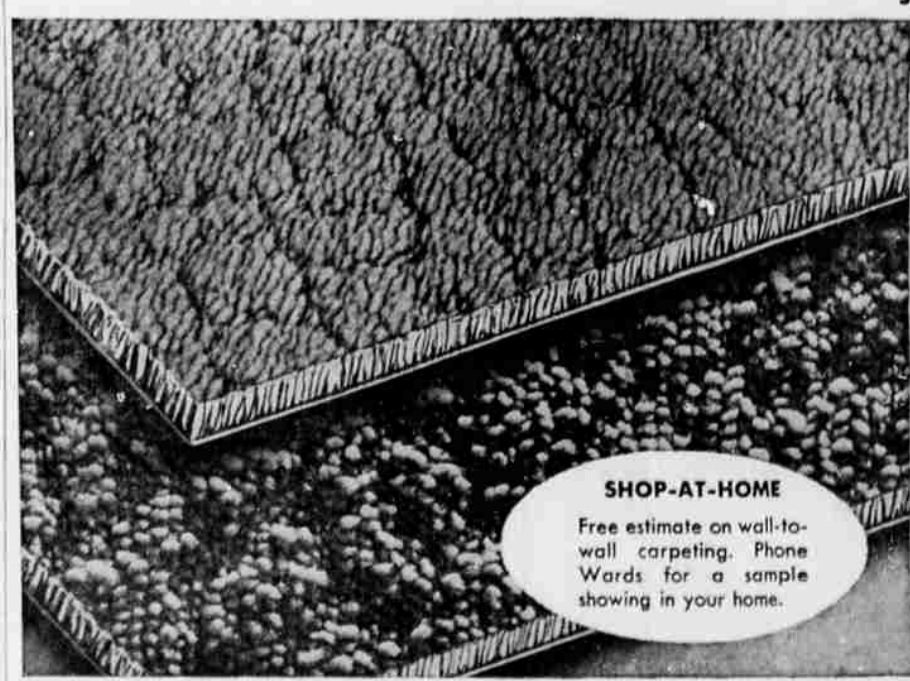
WARDS STYLE HOUSE "SPECIAL" DIAMOND-TUFTED MATTRESS

The deep comfort and resilient support of a 510-coil innerspring unit, at a rare low price! 4 side guards, 4 side grips, heavy 7-ounce woven stripe ticking with glittering Lurex. Tufted in dramatic diamond design. See this Blue Ribbon special today! Coil box spring in matching pattern only. . . 38.88

STYLE HOUSE "DELUXE" MATTRESS 510 COILS PLUS FOAM LAYER

Beautiful in pink rose-print sateen! Has same 510-coil unit, plus extra comfort of a foam cushion over latexed sisal-and-cotton padding. 4 side guards, side grips. Flange stitching at mattress edge holds surface permanently smooth. Coil box spring in matching pattern. . . . 48.88

Special guarantees on all Ward mattresses!



nylon carpeting!

Du Pont '501' Nylon Pile

Installed over rubberized pad **9 99** 'NYALLE' sq. yd. installed

The newest and most exciting of man-made miracle fibers. Continuous filament nylon pile reduces shedding and fuzzing, maintains dimensions and color for years longer. Excellent color choice. 12', 15' widths.

- 'Astronyl' (5 colors) 7.99 sq. yd.
- 'Nylcrest' (4 colors) 8.99 sq. yd.
- 'Tonelle' (4 colors) 10.99 sq. yd.
- 'Dynasty' (8 colors) 11.99 sq. yd.

SHOP-AT-HOME
Free estimate on wall-to-wall carpeting. Phone Wards for a sample showing in your home.

SATISFACTION GUARANTEED or your money back! **NO MONEY DOWN** when you "Charge it" at Wards