

# 'Brown Line' Carries Water to Medford Area



**WEST CANAL**—Water from Howard Prairie, Hyatt and Emigrant lakes streams through this irrigation canal along the side of the hills west of Talent to serve water users

By **CLEVE TWITCHELL**  
Mail Tribune Staff Writer

Talent—Motorists driving in the Talent area probably have noticed and have been curious about a brown line extending across the face of the hills to the west.

From the floor of the valley, it appears as if a road had been cut along the side of the hills.

There is a road—but in actuality the brown "line" is an irrigation ditch, the west side canal of the Talent Irrigation district. A narrow dirt road runs along side of the ditch for use by district personnel.

**Carries Water to Medford**

The west side canal carries water from a point near Ashland to the Dark Hollow area west of Medford. It is one of three main canals in the Talent Irrigation district system. A second ditch called the Talent canal extends from the center of the valley, and a third extends along the hillsides on the east side of the valley.

Water users located just above the west side canal and between it and the Talent canal are served by the western ditch.

The west side canal has

been in operation since 1936. Originally it was just one-third its present size. Improvements have been made during the past year so the canal now can carry 40 second feet of water instead of the previous capacity of 15 second feet.

**Used on Experiments**

In conjunction with the enlargement program, the west side canal also has been used in experiments with emulsion material to cut down loss of water through seepage into the ground.

The experiments have been quite successful, Walter Hoffbuehr, district secretary-manager, indicated. He said the water loss had been reduced from 600 to 18 gallons a minute over an 11,000-foot section.

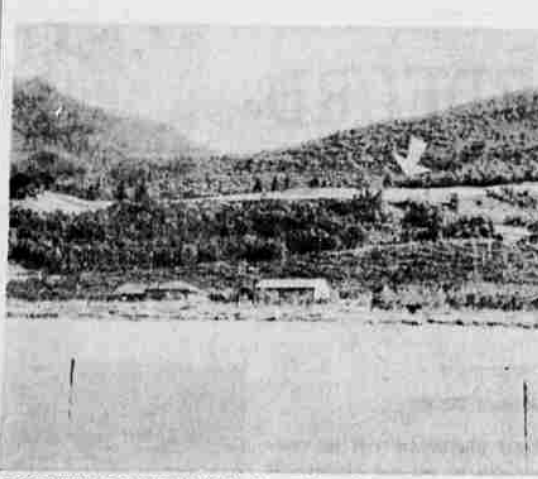
**From Three Lakes**

Most Talent Irrigation district water comes from Howard Prairie, Hyatt and Emigrant lakes. It comes to the valley in canals, eventually entering the east side canal.

Water for the west side canal is siphoned from the east side. It plunges to the valley floor and then travels up the west side without the aid of pumps—obeying the scientific principle of water maintaining identical levels



from Ashland to the Dark Hollow area. Beside the ditch is a dirt road wide enough so Talent Irrigation district trucks can drive along side the entire length of the canal.

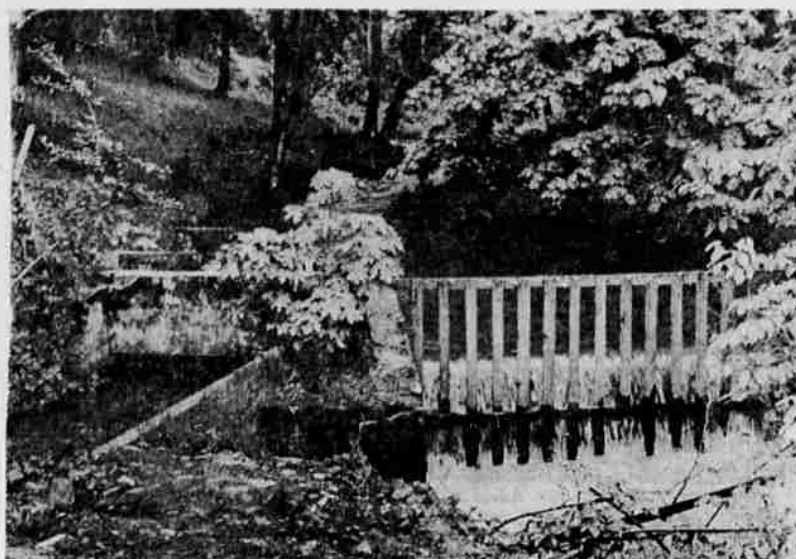


**LOCATED ON HILLSIDE**—The Talent Irrigation district's west side canal appears like a line of bare earth, (see arrow) almost blotted out by trees in places, extends along the side of the hills where the excavation was made to enlarge the ditch.

A line of bare earth, (see arrow) almost in both ends of a u-shaped tube.

The west canal's water supply is supplemented by water from MacDonald creek, which is brought from Wagner creek and then siphoned into a ditch near Wagner creek rd. west of Talent.

The ant takes long rests, sometimes remaining motionless for hours. An ant hill seems to be always bustling because the nappers hide from sight.



**SUPPLEMENTAL SOURCE**—Additional water for the west side canal is brought down Wagner creek from its source at MacDonald creek. At a point a few miles west of Talent, shown in this photo, the Talent Irrigation district's water is siphoned out of Wagner creek. The district's water is taken off into the canal at left, while the remainder of Wagner creek flows through the opening at right. Gates on both forks help to regulate the flow of water.

(Open Today 1-4)  
**POOL CLEARANCE**  
SAVE MORE AT MOORE'S  
Compare Anywhere Quality Plus Price

Rigid Rustproof Fence Wall—  
6-ft. x 15-in. Deep—Reg. \$13.00 SALE \$8.77  
8-ft. x 20-in. Deep—Reg. \$20.00 SALE PRICE \$14.77  
10-ft. x 24-in. Deep—Reg. \$35.00 ONLY \$22.99

Solid Steel Wall for Durability  
With Steel Top Rung for Added Strength

**THE BETTER TYPE FOR SMALLER SIZES**

	Factory List	SALE PRICE
6-Ft. x 15-in. Deep	\$20.00	\$13.95
8-Ft. x 20-in. Deep	\$30.00	\$22.95
10-Ft. x 24-in. Deep	\$42.00	\$32.95
12-Ft. x 30-in. Deep	\$70.00	\$54.95

Big family size pool with rugged construction. Built to give years of enjoyment in your back yard at these low low prices.

	Factory List	SALE PRICE
10-ft. Across, 30-in. Deep	\$ 80.00	\$64.00
12-ft. Across, 36-in. Deep	\$125.00	\$89.00

Open Today 1-4 P.M.

REGISTER FOR FREE CASH AND MERCHANDISE DRAWING

**MOORE'S PATIO & TOY SHOP**  
816 So. Riverside 815 So. Central  
SEE OUR PATIO AD PAGE 6C

**NOTICE**  
**Noble's Shoe Store**  
formerly Buster Brown Shoe Store  
WILL BE  
**CLOSED ALL DAY**  
**TOMORROW (Monday)**  
Preparing for a  
**Gigantic Clearance Sale**  
STARTING TUESDAY AT 9 A.M.

**ONE DAY-Service**  
Kodachrome and Ektachrome  
Also  
6-Hour Black and White Service  
**ANDERS PHOTO SHOP**  
232 E. Main • 772-5646

Quality TV Buy! ALL NEW  
**19" ZENITH**  
Portable TV  
19" overall diag. picture meas. 17 1/2" sq. in. incl. picture area

**NOT "STRIPPED DOWN" INSIDE!**

The SUNSET—Model J2005  
Trim, compact texture finished cabinet in Westpoint Gray color or Daytona Sand color.

**LOW! LOW!**  
**\$159.95**

**FREE DELIVERY**

**Terms**

**FULL PERFORMANCE FEATURES!**

- 18,000 VOLTS of picture power —not 13,500
- FULL POWER TRANSFORMER
- 3-STAGES OF I. F. AMPLIFICATION —not 2 stages

**EADS FURNITURE WAREHOUSE**  
123 S. FRONT 772-7121

**EADS TRANSFER AND FURNITURE CO.**



When You're Planning for FUN--  
—be sure to include—



**Jorgensen's ...**  
**FIESTA**  
**ICE CREAM**

Makes EVERY Occasion a Real FIESTA!



Once you taste Jorgensen's FIESTA you'll instantly know why this really FINE ice cream is a TOP FAVORITE here in the Rogue River Valley! To add goodness and oomph to FIESTA, the folks at Jorgensen's have added an exclusive nutrient—NUTRIMIX—which more than ever makes it the BEST ICE CREAM BUY OF ALL! Be sure to keep YOUR refrigerator well stocked with FIESTA... it's easy to store in freezer or refrigerator in the colorful cartons—easy to serve and, most of all, easy to ENJOY!

**Always Ask for "Jorgensen's"**