

### Cigarette Output For Fiscal Year Sets New Record

Washington - AP - The Agriculture Department estimates cigarette output for the fiscal year ending June 30 at 533 billion - 15 billion above fiscal 1960-61 and topping any previous fiscal or calendar year.

U. S. smokers, including those overseas, consumed about 506 billion cigarettes. The remaining 27 billion were shipped to foreign countries and to U.S. island possessions.

In a review of the tobacco situation, the department said there will be moderate increases, this year over last, in acreages of the two major cigarette tobaccos - flue-cured and burley. If yields per acre are near the averages of recent years, production will be the largest for several years.

#### Stable Level Topped

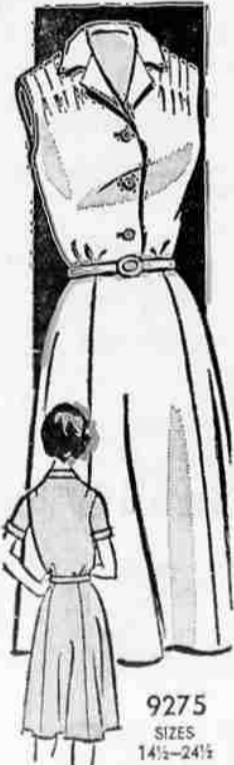
Cigar and cigarillo consumption in the year ending June 30 is estimated about 7.1 billion, probably 170 to 200 million above the fairly stable level of the three preceding fiscal years.

The department said cigar manufacturers making blended filler cigars containing Cuban tobacco were already adapting to the possible cut-off of Cuban tobacco before the embargo last Feb. 7. Further gradual reductions are being made in use of Cuban tobacco. Total stocks of Cuban tobacco in the United States on April 1 were more than double those normally held prior to 1959 - the year the Castro forces took control of Cuba.

#### Exports Higher

U. S. exports of unmanufactured tobacco during fiscal 1962 are estimated at 570 million pounds farm-sales weight, slightly above 1960-61 and the largest in six years. The department said relatively high economic activity abroad and rising cigarette consumption around the world are favorable influences aiding U. S. tobacco exports. Offsetting factors are expanded foreign production and trade barriers. The department said that based on dollar value, tobacco was the third most important U. S. agricultural commodity exported in each of the past two years.

#### Summer Hit!



9275 SIZES 14 1/2-24 1/2

by Marianne Martin

Fits your figure, fits your busy life perfectly - sew this neatly bloused shirtdress with soft shoulder detail in cool cotton silky rayon, Dacron.

Printed Pattern 9275: Half Size 14 1/2, 16 1/2, 18 1/2, 20 1/2, 22 1/2, 24 1/2. Size 16 1/2 requires 3 3/4 yds 35-inch fabric.

FIFTY CENTS in coins for this pattern - add 10 cents for each pattern for first-class mail. Send to Marianne Martin, Medford Mail Tribune, Pattern Dept., 232 West 18th St., New York 11, N.Y. Print plainly NAME, ADDRESS with SIZE and STYLE NUMBER.

Extra Big Summer Pattern Catalog - over 106 styles for all sizes, occasions. Send 35c.

#### WANTS TROOPS BACK

New Delhi - AP - India is anxious to withdraw its troops serving the United Nations in the Congo, according to officials here. They said India was unable to keep its troops in the Congo indefinitely and that they were needed at home to strengthen India's borders with Communist China and Pakistan.



# JCF...YOUR PARTNER IN PERSONAL PROGRESS SINCE 1909

- for savings
- for home loans

## SEMI-ANNUAL FINANCIAL STATEMENT

JUNE 30, 1962

### ASSETS

First Mortgage Loans .....	\$18,601,487.31
Conventional Loans .....	\$13,524,842.82
FMA Insured Loans .....	3,549,011.82
V. A. Insured Loans .....	1,527,632.67
Loans on Savings Accounts .....	101,793.02
Other Loans .....	27,170.28
Properties Sold on Contract .....	68,466.35
Real Estate Owned and in Judgment .....	34,656.95
Investment and Securities .....	321,027.76
United States Government Bonds .....	3,231,257.26
Cash on Hand and in Banks .....	488,183.50
Office Building and Equipment .....	461,405.48
Deferred Charges and Other Assets .....	32,658.76
	<b>\$23,368,106.67</b>

### LIABILITIES

Savings Accounts .....	\$19,943,889.45
Loans in Process .....	1,097,751.95
Other Liabilities .....	307,464.98
Specific Reserves .....	35,691.65
General Reserves .....	1,750,981.67
Surplus .....	232,326.97
	<b>\$23,368,106.67</b>

Semi-annual earnings received by the members of JCF  
June 30, 1962 totaled  
**\$375,917.71**



### DIRECTORS

- Glenn O. Taylor 2 East Main St.
- W. J. Warner Retired
- H. J. Field Norfield Shoe Co.
- John H. Pletsch 2 East Main St.
- John P. Moffat Mann's Dept. Store
- Seth M. Bullis PP&L
- E. H. Singmaster Singmaster Ins. Agency, Ashland

### OFFICERS

- W. J. Warner President
- H. J. Field Vice-President
- Glenn O. Taylor Vice-President
- John H. Pletsch Secretary-Treasurer
- Glen M. Lusk Asst. Sec. Treas.
- Joseph M. Butler Asst. Secretary and Manager of Ashland Branch
- Irene J. Childs Asst. Secretary
- Rollin D. Watson Asst. Secretary
- Glenn O. Taylor Attorney

### STAFF

- Colleen Borreson
- Donna Crockett
- Dianne Delorme
- Frank Elsom
- Jeanette Hampson
- Donna Marshall
- Ben Mushaney
- Margie Rock
- Jeanne Savage
- Sharon Simmons
- Kathryn South
- Nelda Turman
- Phyllis Wald
- Lois Gage-Ashland Branch
- Peter Roberts-Bldg. Engineer

# JCF

JACKSON COUNTY FEDERAL SAVINGS AND LOAN ASSN.

Home Office - 2 East Main, Medford Ashland Branch - 337 East Main, Ashland

