

Capitol Memo Emergency Board Shies From State Executive Branch

By DOUGLAS GRIPP
Salem (UPI) — No member of the State Emergency Board seemed eager today to accept a dare from Oregon's executive branch to take legal action for flouting the board's authority to oversee state spending. But there were ominous rumblings from some of the nine legislators who make up the board, and a few cries of indignation.

The challenge for a lawsuit came Tuesday from the State Board of Control, made up of the governor, secretary of state and state treasurer, all Republicans. The emergency board has a Democratic majority.

The control board, which sets policy for all state institutions, issued a formal invitation for a test case by turning its back on the emergency group on a \$12,000 fence job at the site of Oregon's new women's prison.

A 1961 law requires the control board to submit for emergency board approval every phase of the new wom-

en's prison. This is clearly set out in a separate 1961 law, and was done so purposely by the legislature because it felt plans for the women's prison at the last session were incomplete.

At that time, the proposed prison was only in the sketch stage. But this law is unconstitutional, according to the control board, which said it is an invasion of the executive department's role of administering laws.

This position was hailed in print Wednesday by former Gov. Charles A. Sprague, Salem publisher, who urged the State Board of Higher Education to join in the showdown of emergency board authority.

Also on Wednesday, House Speaker Robert B. Duncan (D-Medford), announced he is asking Atty. Gen. Robert Y. Thornton for an opinion. And State Rep. Clarence Barton (D-Coquille), said since the control board is so fussed up, it should file the test case itself, adding this would be a fine example of wasting the taxpayer's money.

Meanwhile there were these new developments Thursday. —The control board office dispatched a letter to Warden Clarence T. Gladden ordering the fence job to proceed immediately. Gladden said he would put the project out for public bidding right away.

Secretary of State Howell Appling Jr. freshened his stand on the law suit challenge, declaring that the emergency board has been trying to illegally "dabble" in administration for some time. He added the time is ripe now "to bring the issue to a head."

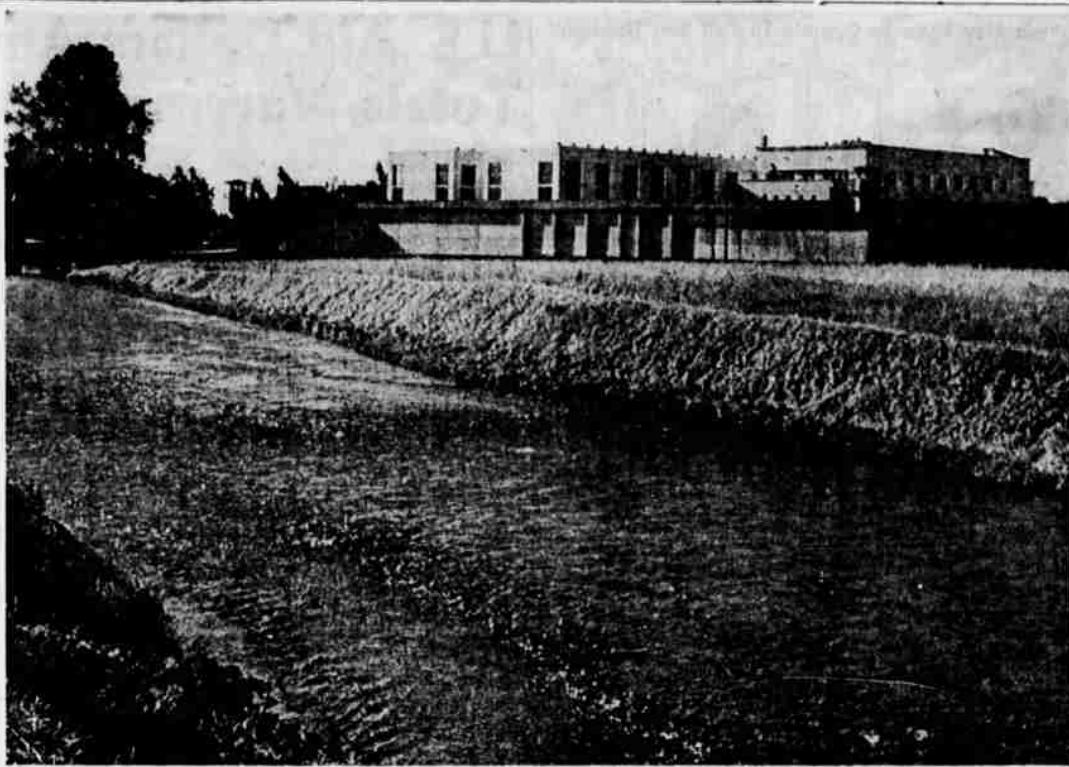
Appling and others say the emergency board is limited to passing on emergency matters only, complaining that the board has tended to stick its finger into non-emergency matters with increasing regularity.

Two Accidents Are Reported in City

Two automobile accidents were investigated by Medford city police Wednesday involving four cars. One citation was issued by police.

Robert Lee Lunceford, 17, of route 2, box 205A, Medford, was cited by police for violation of basic rule, after his car struck a parked car owned by Stanley M. Davis Sales, San Leandro, Calif., on Crater Lake ave. north of Spring st.

The other accident occurred at the intersection of Jackson st. and Riverside ave. about 12:07 p.m. including vehicles operated by Terrill Lee Cowden, 18, of 411 South C st., Eagle Point, and Robert Collins, 38, of 1817 Stratford Way, Medford.



CONTROVERSY CENTER — Center of State Board of Control-State Emergency Board controversy is a \$12,000 fence to be built in area east of Oregon penitentiary. The fence, to enclose building site of new women's prison, was to be given approval by legislative Emergency board, but

the Board of Control rejected the idea, calling for a court test of the Emergency Board's powers. The Board of Control claims this is an infringement on executive matters. Mill Creek is in the foreground. (UPI)

Contrast Noted Between Programing Demands, Use

Eugene — There can be a big difference between what people say they want in television, and what they actually use.

This was the finding of a study in the differences in demand and use of television programing variety made by John R. Shepherd, associate professor of speech at the University of Oregon, and T. M. Scheidel, assistant professor of speech and drama at Cornell university.

The study was discussed at the Federal Communications commission hearings held recently in Washington, D. C.

Data From Project
Data for the study were drawn from the Oregon Educational Television project, to which Dr. Shepherd is a consultant. Dr. Scheidel is a visiting research associate on the project last summer. An article on the study and its findings appears in the spring Journal of Broadcasting.

As part of a study sponsored by a U. S. Department of Health, Education and Welfare act, 1,024 persons were questioned on their viewing habits and attitudes toward educational television and television in general.

One item asked the individual to indicate which of seven possibilities was the factor he most disliked about television. Ninety-four persons marked "the lack of program variety," and subsequently became the subjects for this study on programing variety.

Investigated Stations
The study investigated the question of whether Eugene's four commercial television stations offered a variety of programing during a selected week. If the variety did exist, investigators wanted to learn what use was made of it by the individual who said he thought programing lacked variety.

Programs were separated into 14 categories — such as information-news, artistic entertainment, drama-miscellaneous, sports and movies.

Drs. Shepherd and Scheidel made a table of the weekly time devoted by the stations to each program category, and found that the opportunity to view a variety of each of the 14 categories was present.

By comparing the time spent viewing each category by the viewers who complained of a lack of variety and those viewers who hadn't

complained, the educators discovered no great differences in viewing habits.

'Little Evidence'
"There seems to be little evidence here that the view-

ers who express interest in 'greater variety' are in fact seeking greater variety in the programs they select for viewing.

"This is one instance in

which there is a singular difference between what people say they want in television programing and what they actually use," the article concluded.

Stravinsky's 'Noah's Ark' For TV Said Pretentious

New York (UPI) — Composer Igor Stravinsky launched Noah's Ark on television Thursday night and it foundered under the weight of arty pretensions.

Stravinsky, who will be 80 next Sunday, has more than a half century of world-shaking successes behind him. So perhaps he can be forgiven the patch-work dance-drama presented Thursday night by CBS-TV, which commissioned the work two years ago and entitled it "Noah and the Flood."

It was Stravinsky's first work for television, and CBS and the program sponsor built it up as a milestone in television's unsteady climb toward long-promised cultural peaks. Master choreographer George Balanchine created the dance accompaniment which was performed by the stars of the New York City Ballet. Lawrence Harvey was narrator and the voices of such stars as Sebastian Cabot and Els Lanchester read the text. Who could ask for anything more?

Bold Musical Ideas

For one thing, television asks — even demands — the sort of bold musical ideas that marked Stravinsky's early works, his "Firebird" and "Petroushka," and even his later "Rake's Progress." The astringent score of "Noah and the Flood," composed in the 12-tone serial style of Stravinsky's later years, seem-

ed a sterile conception of one of mankind's richest legends. The strident strings, thumping drums and shriek-voiced horns added little splendor to the presentation's two big dance scenes — the building of the ark and the flood. The music certainly failed to inspire the genius of Balanchine, one of the great dance creators of all times.

Banal Dance Patterns

The dancers performed the most banal dance patterns. There were some architectural groupings in the ark-building scene but that ark never got built. The flood scene, with its heaving figures under what appeared to be wet oil-cloth, was more like a Gustave Dore etching of Hell's holocaust come to life.

The dance-drama accounted for only 20 minutes of the hour-long show. There was a prelude in which Harvey poetically described origins of the flood. Then the composer discussed his "last work" and

mounted the podium to conduct an invisible orchestra.

There also was a postlude of really interesting film clips, photo, "aphs, sketches, and narrative describing Stravinsky's career and the artists with whom he has been associated. The birthday salute to one of the music world's greatest personalities was interrupted by no less than five shampoo commercials.

CLEAN SHAVEN THIEF

Ellsworth, Wis. — (UPI) — City fathers are pretty sure whoever stole their kangaroo court stockade is clean shaven. The stockade was to incarcerate residents who failed to raise beards for the city's centennial celebration starting July 1.

EXTRA

POCKET MONEY...

can make for a trunkful of good times this summer. Wherever your vacation takes you, take enough money. One-visit service.

LOCAL LOAN

535 E. JACKSON BLVD.
Medford Shopping Center
Phone: 773-7456 Dick Webb, Mgr.
Open Friday Evenings 'Til 7

Hallmark
FATHER'S DAY
CARDS FOR
SUNDAY, JUNE 17
When you care enough
to send the very best
Swem's 217 E. Main
Medford

Fire Fighters Asked To Sign Up in Yreka

Yreka, Calif. — Persons wishing to be considered for emergency fire fighting in the Yreka area have been asked to register at the employment service office, 601 South Main st., Yreka.

Wilbur V. Howard, fire control officer of the Klamath National forest, said the recruiting agreement between the forest service and the California Department of employment to recruit firefighters is still in effect.

Both agencies require that applicants be in good health and physical condition, according to Howard.

When firefighters are needed, the employment service will contact applicants by telephone, in addition to making public announcements. Qualified firefighters will be hired during fire emergencies only at the Yreka employment office.

Soviet Tests Cause Tritium Content Rise

Washington — (UPI) — Soviet tests last fall have caused a major rise in the tritium content of rain falling in the U.S. Interior, the Geological Survey said Thursday.

It said that through the summer of 1961, the average tritium level in Lincoln, Neb., was about 75 units. It rose sharply to 237 units last November. The survey said it is not a health danger.

Saturday Siskiyou

SPECIALS FOR SPORTSMEN

4 H.P. Outboard Motor \$89.50

SUPER JET—12 Ga. Reg. \$57.50

Shotgun Reloader \$39.50

With 2 Bars, Like New

See Us for a COMPLETE STOCK of RELOADING EQUIPMENT

SIDE KICK TRAIL SCOOTER \$195
Demonstrator, Reg. 325.00

TOTE GOTE TRAIL SCOOTER \$299.50

BB's (Limit 5 Pkgs.) 3c Pkg.

BOY'S BIKE Like New with \$49.50
shift, speedometer & 2 wheel brake.

Used TILLER \$49.50 We have Several Used Water Pumps

Siskiyou Hardware
225 West Main Street
Phone 772-2939

Central Point Barn Damaged by Fire

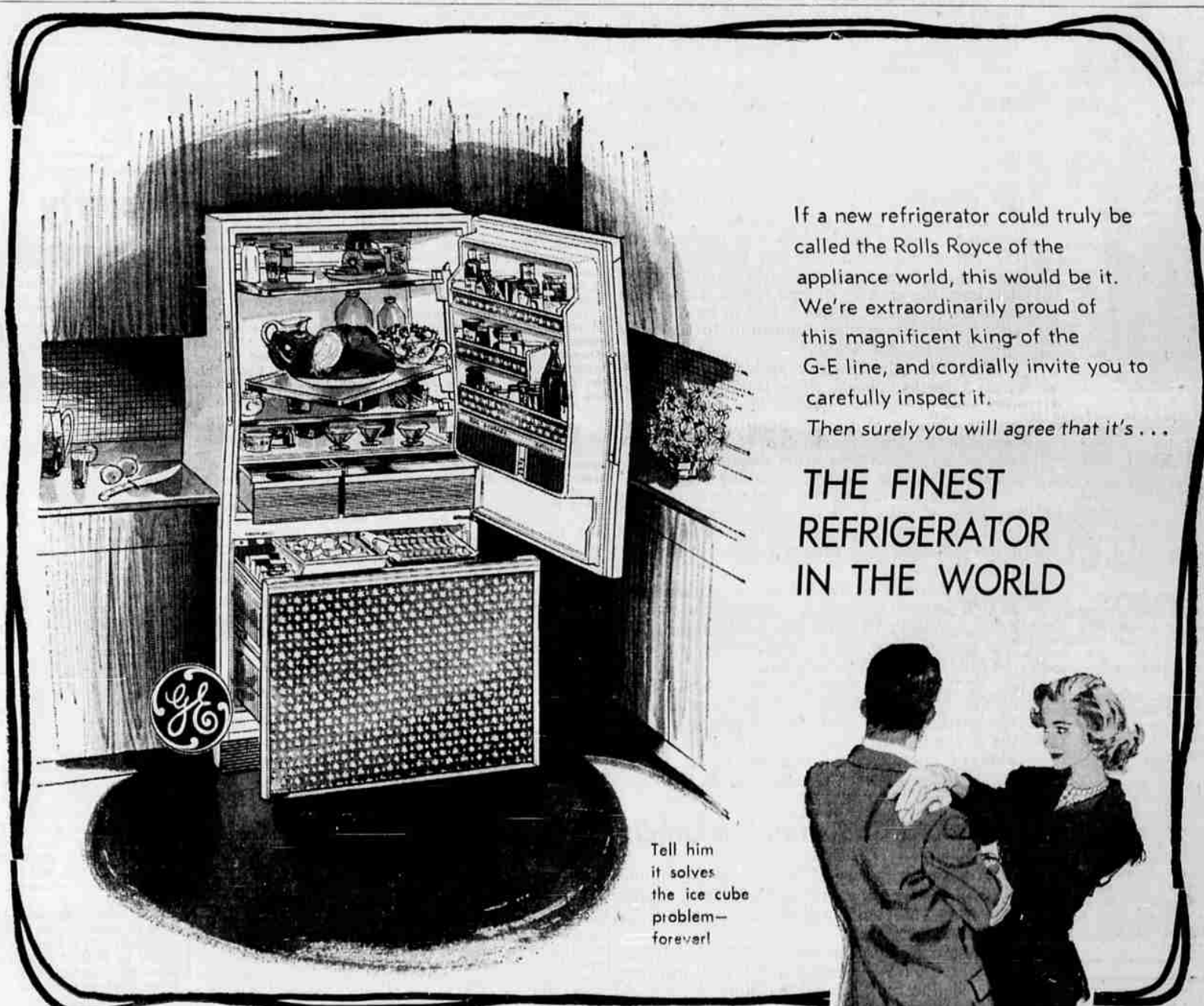
Central Point — Central Point rural firemen put out a barn fire on Hamrick rd. yesterday before the blaze did serious damage.

They reported that fire went up one end of the barn, which is owned by Bear Creek orchards. Firemen said that the blaze appeared to be caused by smoker carelessness, and that the fire apparently had smoldered in straw over night.

Firemen reported that they understood a truck driver spotted the fire. The alarm was relayed to them by Ken Snook, Central Point.

RAINS KILL FIVE
Tokyo — (UPI) — Heavy rains during the past week have taken five lives, injuring 16 persons and caused a lime pit cave-in that left seven workers buried alive, police said today.

SOUTHERN BEAUTY
New York — (UPI) — Deirdre Lesage, 22, Thursday was crowned queen of the New York Summer Festival. Miss Lesage is from New Orleans.



If a new refrigerator could truly be called the Rolls Royce of the appliance world, this would be it. We're extraordinarily proud of this magnificent king of the G-E line, and cordially invite you to carefully inspect it. Then surely you will agree that it's...

THE FINEST REFRIGERATOR IN THE WORLD

Tell him it solves the ice cube problem—forever!

18.8 cu. ft. net storage volume—NEMA standards

G-E SPACEMAKER REFRIGERATOR-FREEZER

Thin wall insulation gives 88% more capacity in same size cabinet as yesterday's 10 cu. ft. refrigerator. Frost Guard ends messy defrosting forever because frost just never forms — not even in the exclusive Roll-Out Freezer! It's the new standard in refrigerators!

COME SEE IT SOON, WON'T YOU?
115 E. Main, Medford and Ashland



THREE SWING-OUT SHELVES

Each anodized aluminum shelf holds over 60 pounds of food! Adjustable even when loaded, removable for easy cleaning.



STRAIGHT-LINE DESIGN

Styled for the future! Saves space, cleaning. No coils in back. Lines up front with base cabinets, needs no door clearance at side.



FREE-IN-STORE ICE SERVER

G-E exclusive! Keep party supply of cubes at convenient level. 3 trays flip-over for more cubes, refill right in the freezer.



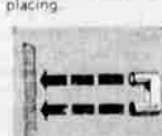
ROLL-OUT FREEZER

Brings everything right out front! More usable space, easier to organize, easier to use! No stooping, no groping, no misplacing.



FROST GUARD

Frost never forms, not even in the freezer! Packages won't freeze together, labels are easy to read! Ends messy defrosting forever.



MAGNETIC SAFETY DOOR

Opens easily, closes silently, opens automatically! (Easy push inside opens it.) G-E Alnico magnet lasts indefinitely!

There Is Nothing "Just as Good as" General Electric