

College Prestige Said Distracting

Salem - UPI - Dr. Leon P. Minear said Thursday the "prestige" of colleges has "tended to distract attention away from other valuable and important post-high school educational opportunities" including technical and vocational training.

The state superintendent of public instruction said beauty, business, practical nursing and trade and technical schools are "only a few examples of course offerings outside the college realm."

He complained that "most parents, teachers, and counselors have given little or no thought to the ways of learning and growing that do not involve college."

"The result," he said, "is that college appears to be the only path to self-development. No wonder many who lack the qualifications insist on having a try at it." Dr. Minear noted that in Oregon only about 40 per cent of those who enter college finish.

Dr. Minear strongly supports establishment of a junior college system in Oregon, two-year courses offering vocational and other training.

District 6C Speech Tournament Slated

Central Point - Central Point, Sams Valley and Gold Hill schools will take part in a District 6C speech tournament at Crater High school Saturday. Headquarters will be in the library. The public is invited to all events.

Participating will be Don Gail, Tommy Abbott, Linda Parker, Sandy Ganong, Peggy Dye, Robin Proeder, Mike Turner, Linda Walker and Eugene Ridge, all of Gold Hill.

Vernene Mattheson, Sue Cornutt, Janine Parrish, John Boyce, Frank Roberts, Elaine Wright, Leon Drew, Arthur Collins, Jack Peels, Shirley Roach, Frank Armstrong and Bob Bray, will participate from Central Point.

Carole Jackel, Susan McAllister, Michael Croxton, Diana Chase, Daniel Nelson, Kathleen Frederick, Cynthia Pleasant, John Eckerman and Linda Bala will participate from Sams Valley.

Legislation Given

Washington - UPI - The Senate Agriculture Committee unanimously approved Wednesday the appointment of Howard Bertsch, 51-year-old Oregonian, as administrator of the Farmers Home Administration.

Bertsch has served for 20 years in the administration and its predecessor agencies.

One-Yard Wonder



7209

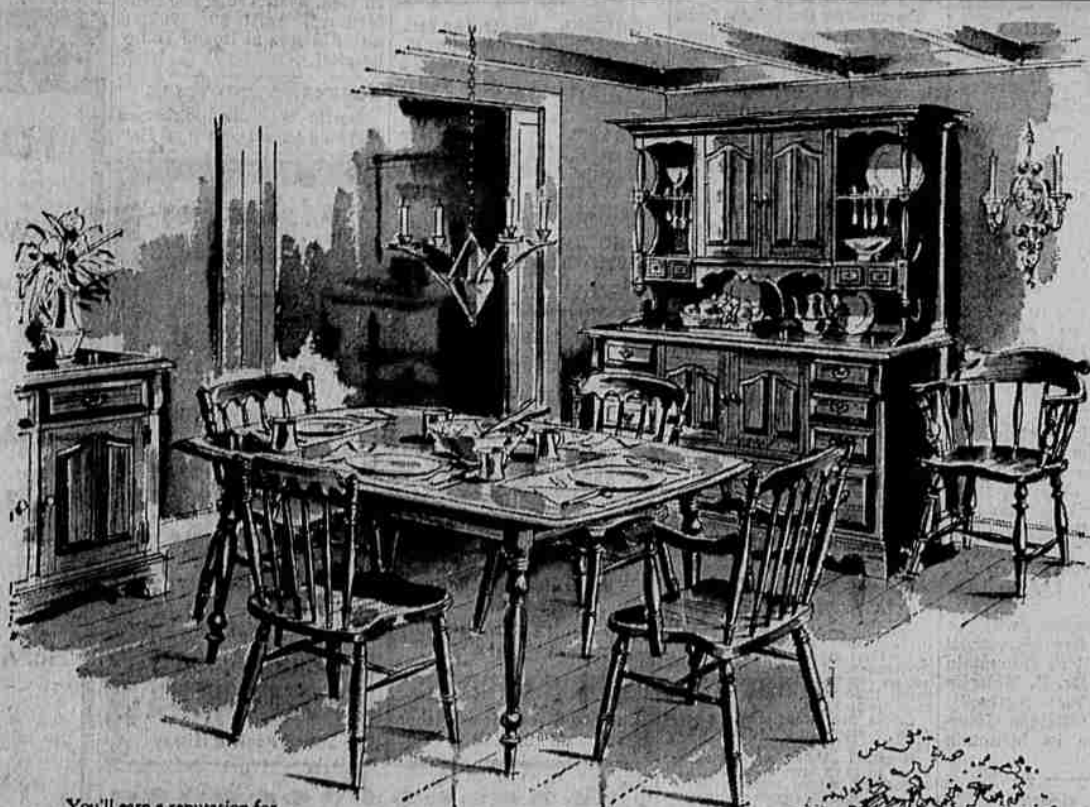
by Alice Brooks

Embroidery 'n' eyelet make a party apron—cheerful checks, a kitchen helper! Sew both easily.

Jiffy-cut! Pin pattern to fabric, and cut out entire apron at once. Takes one yard 35-inch fabric. Pattern 7209; pattern; transfer medium size only.

Send Thirty-five cents (coins) for this pattern—add 10 cents for each pattern for 1st class mailing. Send to Alice Brooks care of Medford Mail Tribune, Needcraft Dept., P.O. Box 163, Old Chelsea Station, New York 11, N. Y. Print plainly NAME, ADDRESS, PATTERNS NUMBER.

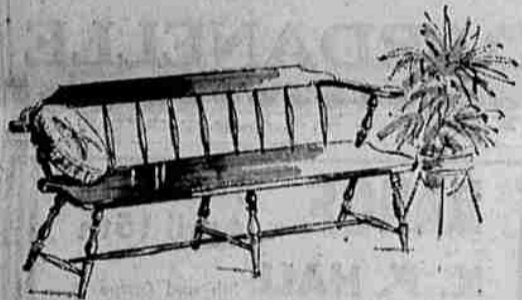
JUST OUT Our 1961 Needcraft Book. Over 125 designs for home furnishings, for fashions—knit, crochet, embroider, weave, sew, quilt—toys, gifts, bazaar items. FREE—six designs for popular veil caps. Quick—send 25c TODAY.



You'll earn a reputation for setting a fine table in a setting as charming as this.



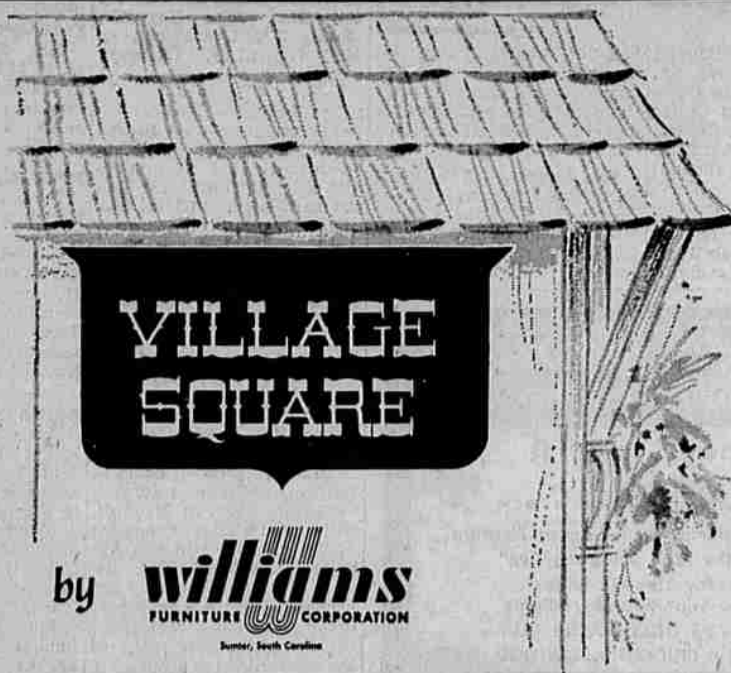
Beauty can be functional, too, with no wasted space in tight corners.



A Settle Bench as Early American as you could get to delight your friends or enhance a hallway.



Comfort and beauty abound in a living room of Early American charm... Village Square sets the mood.



Mix or match, or go completely and beautifully Early American. It's all here in the Village Square collection of dining room, living room, bedroom and occasional furniture. Master furniture craftsmen have selected the finest of hardwoods... the romance and beauty of figured red gum, tupelo and magnolia; the rich dignity of cherry and ash; the strength of oak, and the durability of maple, beech, birch and elm... and combined them to give you striking new dimensions to your home. This artful blend of selected hardwoods and hardwood veneers is further enhanced by a warm, hand burnished Patina finish. On some pieces, the quaint Colonial beauty is accentuated by today's popular painted finishes... Black, Brick Red or Sherwood Green.

This is the collection Lippert's has been searching for. In Village Square you get lasting quality—at prices that make it so easy to own. See the entire collection of over 70 pieces tomorrow!

Early American

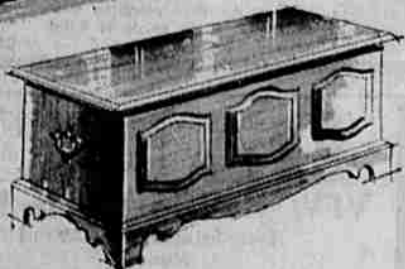
HIGH QUALITY AT THESE MODEST PRICES

Buffet and Hutch.....248.00	Blanket Chest.....64.95
Oval Extension Table.....119.50	Credenza.....89.95
Scoop Seat Arm Chair.....34.95	Door Cabinet.....69.95
Scoop Seat Side Chair.....29.95	Bookcase Hutch.....64.95
Captain's Chair.....39.95	Secretary Desk & Bookcase 79.95
Record Cabinet.....69.95	Lounge Chair.....109.50
4-Drawer Commode.....69.95	Ottoman.....49.95
Corner Desk.....54.95	Sofa.....249.50
Corner Hutch.....79.95	Love Seat.....199.50
Settle Bench.....59.95	Cocktail Table.....49.95
Double Dresser & Mirror 149.50	Pembroke Table.....49.95
Cottage Bed.....69.95	Lamp Table.....49.95
Chest of Drawers.....89.95	Step End Table.....49.95
Chest Mirror.....59.95	End Table.....49.95

Over 40 Other Pieces on Display



A blanket chest: for storage, of course, but at the foot of a bed, it serves as an overnight resting place for your turned down spread.



Inspect the entire collections—tomorrow!

EXCLUSIVELY *Lippert's* SP 3-4394
220 North Bartlett
Conveniently located downtown next to Greyhound



This beautiful credenza will add distinction to any room. Beautiful Patina finish or painted Sherwood Green.