



NIXONS MEET GREETERS—Former Vice President Richard M. Nixon and Mrs. Nixon are shown as they personally greeted thousands of Southern Californians who were on hand at Los Angeles International Airport to welcome them home. An hour after the Nixons arrived they were still shaking hands. (UPI telephoto)

Surface Rights To Be Determined in Forest

Determination of surface resource rights on unpatented mining claims in the McLaughlin and Applegate C areas of the Rogue River National forest has started, the bureau of land management has notified C. E. Brown, forest supervisor.

The areas are in Jackson, Klamath and Josephine counties. Notices will be published for nine consecutive weeks, Brown said.

Maps of the two areas are now being published, and

copies of the multiple-use mining law of July 23, 1955, and of the procedure for the determination of surface rights are available for inspection at the forest supervisor's office in the Medford postoffice building.

A claimant has two options under the law, Brown noted. He may ignore the notices, thereby waiving rights to the surface until the claim goes to patent yet maintaining his original mining rights. The claimant may file a verified statement asserting his rights to the surface, Brown said. In that case, he added, the claim will be examined by mineral examiners.

Profit Sharing Plans Show Large Increase

Chicago—(UPI)—The Council on Profit-Sharing Industries (CPSI) reports that in the first six months of 1960, the number of firms offering the profit-sharing fringe benefit jumped 61 per cent over the year before.

CPSI said that 2,503 new deferred profit-sharing plans were instituted in the half-year, covering 115,544 employees. The Council said that more than \$950 million was shared in 1959 by more than 2 million employees.

Claims of questionable validity will be considered before a hearing officer of the bureau of land management, which will make the final decision. Both the claimant and the forest service will present their testimony at the hearing.

Brown said that whatever the decision, the claimant will retain his mineral rights. If the decision is in the claimant's favor, he also retains all surface rights.



Your Equitable Representative
JIM METZ
1310 Ridgeway
Medford, Oregon
Phone: 5P-24294

This man will help your money GROW

Put your money to work for you... watch it grow. Equitable helps in two important ways. First, your savings earn the highest rate. Second, they are protected by a 70 year record of sound money management... your money is always available where and when you want it. Your Equitable man can show you time tested savings plans... to fit any budget, any family. It takes only a few dollars to start a high earning Equitable Savings account building up the money you need for a happier future. Call or write him for the facts. You'll find him friendly, helpful and informative.

OPEN AND SYSTEMATIC SAVINGS 4% current rate
A.P.O. SAVINGS 4 1/2% current rate

OPEN AN ACCOUNT NOW! Phone or write me. I am interested in Equitable Savings higher earnings. Please contact me for an appointment.

Equitable's open and systematic savings at 4% earnings.
 Equitable's special A.P.O., Automatic Payoff plan at 4 1/2% earnings.

Name _____
Address _____
City or Town _____ Phone _____



13 Offices in Oregon and Washington: Bend, Coos Bay, Eugene, Salem, Newport, Portland (2), Roseburg, Seattle, Spokane, Tacoma, Tualuma

One of Every 260 Workmen In Woods Will Be Killed in '61

Corvallis—One out of every 21 1/2 workmen in the woods will be injured this year and one out of every 260 will be killed, unless something is done about it.

With an eye on doing something about it, Oregon's first Logging Safety Institute was sponsored this month by the Oregon State college school of forestry and the Pacific Northwest Loggers association.

Speakers painted a grim picture of the need for improved safety programs. They noted that 59 loggers were killed in Oregon last year, compared to 77 fatal accidents in all other industries combined. Logging and sawmilling, which employs 7.2 per cent of the Oregon work force, has 47 per cent of all fatal accidents.

At the same time, Institute leaders pointed the way to reducing deaths and crippling and costly injuries. Major points in "accident prevention," they emphasized, include a safety program and "safety attitude" for every operation—little and big; safety inspections; proper selection, placement, and training of employees; accident investigations and reporting; and measurement of safety performance.

A moral obligation exists to prevent injuries to the workmen and a legal obligation as well because state law requires an employer to provide a safe place of employment, R. P. Miller of International Paper Company, Longview, Wash., emphasized.

The staggering costs involved in the sorry safety record were outlined by J. G.

Green of the Oregon state industrial accident commission and M. H. Fell of Edward Hines Lumber company, Hines.

Green reported that the average cost per claim in logging is nearly \$350. Indirect costs of accidents run from four to six times that amount in addition, it was explained. These include damage to equipment and product, loss of production time, time of supervisors and others in talking care of the injured.

Average Cost
The average cost of accidents as estimated by the Western Pine association is \$2.88 per thousand. Fell said, and it may be substantially more than that in fir.

No logging operator big or small can afford to be without a safety program, Howard W. Peterson, logging manager for Crown Zellerbach

Corporation, Portland, insisted.

What can the small logger do about safety? He can be his own safety supervisor, Peterson stressed. He can talk and act safely on the job; be sure that his equipment is in safe operating condition and that it is properly set up; be sure that his men have safety equipment and that they can use it; and can insist on safe working practices.

"We cannot subscribe to the philosophy that every so often someone must be killed or that for so many thousand board feet of timber logged someone gets hurt," according to K. L. Gibson, safety director for the Georgia-Pacific, Portland.

Carefully Considered
Two things must be carefully considered and checked each time there's an accident—the cause and the cure, he stated.

Log truck accidents are generally caused by human error, not mechanical failure, Dan B. Cudaby of Jones Logging company, Nelscott, reported. These causes can only be cured by constant recognition of the hazards, by daily safety inspections, attention to equipment, and constant caution.

Top management must take an active part in the development and operation of the safety program, R. R. Elliot of Weyerhaeuser company, Klamath Falls, stressed. "Accidents are caused and can be prevented, safety is a mark of skill and of good sense," he summarized.

Robert L. Wilson, forest engineering professor, was in charge of the conference which will now be an annual event at Oregon State college.

Russia Claims Hydrogen Bomb

London—(UPI)—Radio Moscow has announced that Premier Nikita Khrushchev now claims Russia invented the hydrogen bomb.

A broadcast report on a speech Khrushchev made at a farm meeting in Moscow last week quoted him as saying: "The American imperialists, having created the atomic bomb, began talking about the creation of a hydrogen bomb. Our scientists, as the saying goes, 'found it round their whiskers'... and created the hydrogen bomb before it was invented in the U.S.A."

Bunker Hill Co. Reports Net Loss

San Francisco—(UPI)—The Bunker Hill company, whose production was interrupted by strike in 1960, has reported a net loss of \$4,222,707 for the year.

The 1960 loss compared with a profit of \$209,172 in 1959.

Heaviest losses, totalling \$3,170,909, were suffered in the final quarter when the Kellogg plant in Idaho produced only 1,104 tons of zinc because of a strike.

Total income for the year was \$31,356,627, compared with \$49,488,775 the previous year. The company said all its plants have been operating at capacity so far in 1961.

Missionary to Talk At Lenten Program

Jacksonville—Warren Myers, a veteran of seven years of missionary work in the Orient, will speak at the third meeting of the Lenten Mission study program at 7:30 o'clock tonight at the Jacksonville Presbyterian church.

Prior to the main address by Myers, discussions of the topic of the evening, "The World-Wide Appeal of Christianity," will be held.

Myers originally went to the Far East in 1952 at the request of the late Dawson Trotman, founder of the Navigators, in the ensuing years, Myers has worked in Hong Kong, India, and Vietnam. His talk will be illustrated with color slides.

Oil Industry Leads Capital Investments

Chicago—(UPI)—The oil industry leads the nation in capital investment, according to Oil Market, an industry publication.

It spends \$64,000 per employee compared with about \$15,000 for industry in general.



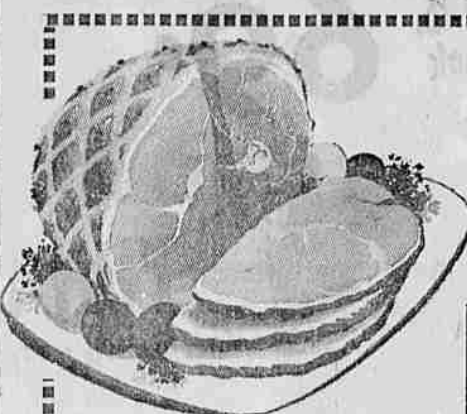
Now all she needs is **Gravy Quik** for wonderful gravy every time!

Yes, Gravy Quik makes cooking a pleasure—so fast, so easy—with perfect gravy every time. Just add Loma Linda Gravy Quik to water, bring to a boil, and there you have it—a smooth, rich, brown, wonderful-tasting gravy. Low in calories, too, just 11 per serving. At your food store.



ANOTHER OF THE FAMOUS **Loma Linda** QUALITY SINCE 1906

AT OK MARKET SILVER DOLLAR STAMPS



HAM SALE!

Whole or Shank Half

Boneless Fully Cooked HAMS

79¢ lb.

55¢ lb.

PLUS 50 FREE SILVER DOLLAR STAMPS WITH EACH PURCHASE

Klamath-Fed Locker Beef

Cut and Wrapped — No Money Down, Up to Four Months To Pay

Schilling Spaghetti 2 pkgs. 35¢
Sauce Mix—Reg. 25¢

FISHER'S Pancake Mix 4-lb. Bag 39¢



Honolulu Lady Pineapple Juice 12-oz. Size 7¢ Can

MAXWELL HOUSE COFFEE

63¢ lb. 2-lb. \$1.25



WHIFF DOG FOOD 7 CANS 49¢

Fireside VANILLA WAFERS Over 90 per Bag 29¢



OUR BIG FLAV-R-PAC canned food **SALE**
Continues Through Saturday **DON'T MISS IT!**

OK SUPER MARKET

1202 N. Riverside
Open Till Midnight
7 Days a Week
Silver Dollar Trading Stamps

All Specials Are Good
Thurs. Thru Sat. Nite

ZEE Giant Roll PAPER TOWELS Reg. 35¢

2 FOR 45¢

Chiffon Facial Quality DINNER NAPKINS Reg. 2 for 49¢ NOW 19¢ Ea.

Best Foods Salad Oil Famous for Quality 39¢ Qt.

Swift's **ORIOLE Bacon** mild... fine flavor! 55¢ lb.
Mild ROGUE GOLD

CHEESE lb. 49¢

Gaveman **BOLOGNA** By the Piece 49¢ lb.

49¢ lb.

FRYERS \$1.19 Each
2 1/2- to 3-lb. Average Serve It Corn Crisped!

NEW EASY WAY to fix crisp chicken without frying! No shortening, no turning!

Corn-Crisped Chicken

RECIPE
CORN-CRISPED CHICKEN
2 1/2 to 3-lb. broiler-fryer Chicken, cut in pieces
1/2 cup PET Evaporated Milk
1 cup Kellogg's Corn Flake Crumbs
1 tsp. Ac'cent
1 tsp. Salt
1/4 tsp. Pepper

Dip chicken in PET Milk. "Thin" milk just won't do! Roll in mixture of crumbs, Ac'cent, salt and pepper. Place chicken in shallow baking pan lined with Reynolds Wrap. (That's right, no shortening!) Bake in 350 oven (moderate) 1 hour, or until drumstick is tender.

CHECK OK MARKET'S QUALITY PRODUCE!

LETTUCE 2 for 19¢ Large Crisp Heads

CARROTS 2 Lb. Cello Bags 23¢ pkg.

CELERY Real Fresh 2 bun. 29¢

RADISHES AND GREEN ONIONS 5¢ Bunch

LEMONS Large, Full of Juice doz. 39¢

Grapefruit, Arizonas 8 LB BAG 39¢

AT OK MARKET SILVER DOLLAR STAMPS