

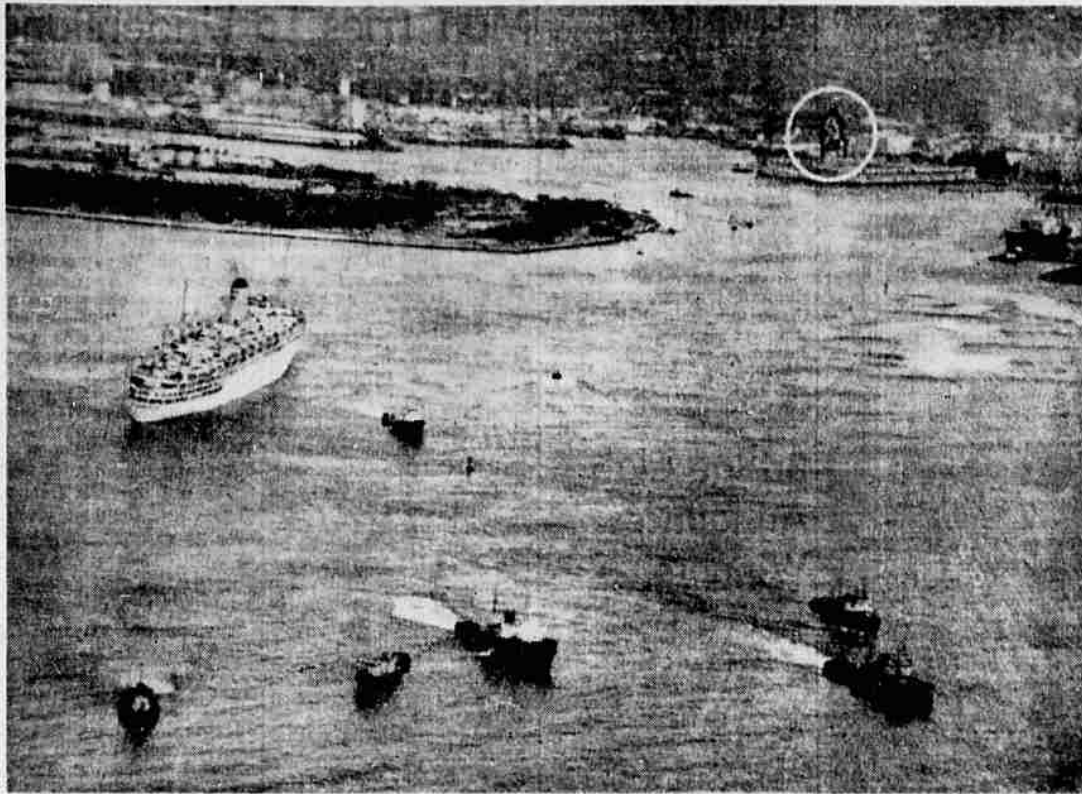
Seven Firms in City Qualify for Employee Awards

Seven firms in the Medford area qualified for the United Medford Crusade Employee Group Award plan for the first time during the 1960-1961 campaign, according to Harold B. Cook, executive secretary of the crusade.

Firms qualifying this year were the U.S. National Bank, Medford branch, Taylor Sheet Metal company, Olson-Lawyer Lumber company, General Motors Acceptance corporation, the California Oregon Power company general office accounting department, and the Boy Scouts of America, Crater Lake council.

Firms qualifying in previous years are Mechanics Laundry, Big Y Super market, Harry and David's Bear Creek orchards, Mann's Department store, television station KBES, Reter Fruit company, Elk Lumber company, Jorgensen's dairy, Pacific Telephone company's traffic units Nos. 1 and 2 and central office unit, Elmer Milton Logging company, Copco records and transmission departments, and all employee groups of the 16 schools of District 549C and the employees of the city schools administration office.

An employee group of from 5 to 19 employees can qualify if 80 per cent of the employees



LINER AGROUND—The British Liner Arcadia is shown aground in Honolulu Harbor as tugs strain to get her off. Waves can be seen breaking on the shoreline at right. The city is in the background with Aloha Tower circled. (UPI Telephoto)

Legislative Leaders Swamped By Job Seekers

Salem — (UPI) — Legislative leaders buckling down to pre-session details, have been swamped by job seekers who want a spot on the legislative payroll — ranging from secretary to doorkeeper.

Both House Speaker Robert B. Duncan (D-Medford) and Sen. Harry Boivin of Klamath Falls, the likely Senate president, said applications this year were much heavier than in previous years.

The session opens up some 275 positions for potential legislative employees. Ninety of these are secretaries — one for each lawmaker. Last year roughly half of these positions went to legislators' wives.

Owens Recommended
Mary Owens of St. Helens, unsuccessful Democratic candidate for Congress last November, was recommended for Senate reading clerk.

Subject to approval of the membership, Boivin also recommended these Senate officers, all holdovers from 1959:

Meda Cole, Portland, chief clerk; Twyla Zinn, Salem, assistant chief clerk; Christine Helland, Salem, journal clerk; Jane Watkins, Salem, calendar clerk; and Vern Drager, Salem, sergeant at arms.

give one hour's pay each month for 12 months. A group of 20 or more qualifies if 80 per cent make a donation with at least half of the employees giving not less than one hour's

pay per month for 12 months. Serving on the Crusade's employee group plaque award committee during the past campaign were N. H. Gladfelter, Robert O'Sullivan and

Hal Gardner. Employees of the Southern Pacific railroad and McGrew Brothers Lumber company will receive special awards for their contributions.

PHYSICIST DIES
Vienna — (UPI) — Nobel Prize winner Prof Erwin Schroedinger, 74, one of the world's leading mathematical physicists, died Wednesday.

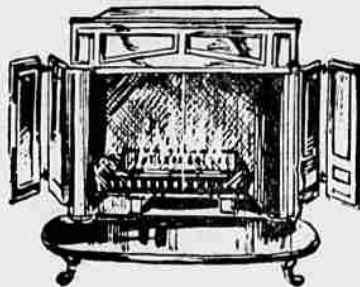
BEAT FREEZING WEATHER

With a Modern Wood Burning
FIREPLACE



- Needs no masonry • Comes complete with its own chimney • Installs in 1 day . . . in most new or existing homes • Approved by Underwriters Laboratories • Can be painted to blend with any color scheme • 4 different styles to choose from.

Pay as Little as
\$11⁸¹
per Month



EARLY AMERICAN FRANKLIN
HEATER FIREPLACE
No. 22 **\$146⁵⁰**

PRACTICAL
COMFORTABLE
ECONOMICAL

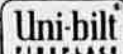
Now! beautiful
wood-burning
FIREPLACES
to fit every budget!



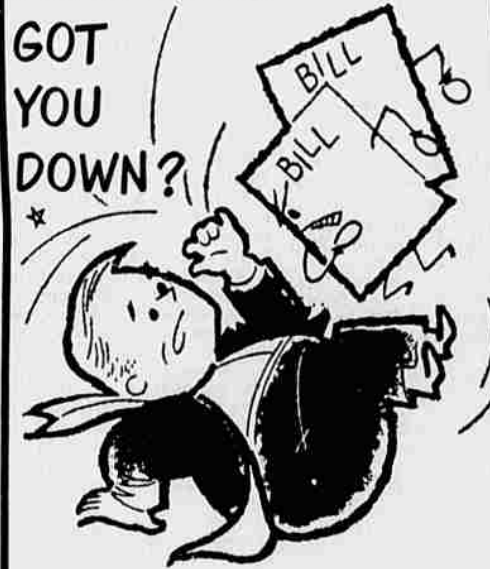
THE EXCITING, NEW Cavalier
Fireplace is ideal for camp and home. • Low in cost • Quickly, easily installed with standard smoke pipe • Free standing • No masonry required • Full size • Paint any color.



THE DISTINCTIVE Citation fireplace adds new comfort and charm to your home. • Comes complete with its own chimney • Installs in less than a day • No masonry, no mess • Paint any color to harmonize with room decoration • Underwriters' Laboratories approved.



FUEL BILLS
GOT
YOU
DOWN?



Insulate with
Johns-Manville
SPINTEX

You can slash fuel bills as much as 30 per cent if you insulate with Johns-Manville Spintex. Come in NOW and we'll give you all the facts about this efficient insulation.
Free Estimates Convenient Monthly Payments

Stop Wasting Heat!
WINTERIZE NOW!



Start by
Re-insulating with
ZONOLITE

Easy to install. Pays for itself in fuel savings. Zonolite Vermiculite Insulating Fill pours right over old, flattened-out insulation. Fills solidly around pipes and wiring. Never settles or sags. . . lasts the life of your home. Let us estimate the number of sacks you will need for your attic.

EASY TERMS

For the Contemporary
FireHOOD
THE CONICAL FIREPLACE

Free-flowing
Functional lines

A fireplace in modern design to fit-in with your scheme of simplicity and smartness. The exclusive conical form is ideal for smoke gathering and perfect as a reflecting surface for radiant heat. Available in jet black matte with a choice of three types of base (other colors and finishes available).
For CONTEMPORARY HOMES, BEACH CABINS, OFFICES AND RUMPUS ROOMS.

SEE IT
TODAY AT
BIG PINES!

Serving Southern Oregon Since 1908

BIG PINES
LUMBER COMPANY
Phone SP 3-5333
6th and Fir Street

EASY TERMS To Suit You



See Our
Selection of
FIREPLACE EQUIPMENT

Screens come in black, copper, brass . . . made to fit your fireplace — lots of styles to suit every decor. Add it to your account for as little as \$3.99 per month.

Plenty of Free
Convenient
**OFF-STREET
PARKING!**

RESOLUTIONS FOR 1961 AT . . .

WILLIAMS APPLIANCE STORES

132 South Central

"Where You Always Buy For Less"

Greatest Savings

Highest Trade-Ins

Quality Merchandise

Dependable Service

1961 HOTPOINT TOUCH COMMAND
Speed Flow Dryer

with true automatic shut-off, cooler, faster drying for Greater Economy . . . Result: Speed Flow dries a typical load of cottons in 35 minutes. Wash 'n wears in 20 minutes, special items even faster.
Reg. \$259.95 NOW **\$239⁹⁵**

1961 HOTPOINT All-Porcelain Touch Command
Automatic Washer

Multiple water temperature control, water saver, lint filter, automatic sediment ejector, wrinkle free wash 'n wears. Every type of fabric gets individual care . . . Result: clothes last longer and look better, washed in a new Hotpoint Touch Command!
REG. \$319.95 NOW **\$299⁹⁵**

30-INCH HOTPOINT
Automatic Range

Push-button controls, lighted panel supermatic cooking unit (Makes pots and pans automatic), Rota-grill Rotisserie, Roast right thermometer (Makes sure your roasts are done exactly the way you want them!).
REG. \$399.95 NOW **\$299⁹⁵**

39" HOTPOINT
Automatic Range

Pushbutton controls, lighted panel, 2 (Two) automatic ovens (broils and bakes at the same time).
REG. \$359.95 NOW **\$259⁹⁵**

30-INCH HOTPOINT
Range

Pushbutton controls, utility outlet.
REG. \$209.95 NOW **\$139⁹⁵**

FAMOUS HOTPOINT
Space-Age Freezer

12 Cu. Ft. Quick Freeze Shelves, new million magnet door seal keeps cold in, heat out, Thrift Master Unit for Greater Economy.
REG. \$249.95 NOW **\$199⁹⁵**

MEDFORD Phone SP 2-9677

TRADE-INS? YES!

We use the Appliance Blue Book value, which is 10 to 20% higher than the average trade-in allowance being given!

GRANTS PASS Phone GR 9-3663

YOUR TRADE-IN REDUCES THE PRICE OF YOUR NEW HOTPOINT

Williams APPLIANCE STORES

132 SOUTH CENTRAL - - - MEDFORD

100 GRANTS PASS - 409 S.E. 6th STREET