

Second in a Series

Move of Welfare Commission Office To Be 1961 Legislature Topic



WOODEN LOG TRAIN — Clyde Marriott, who operates a business at Glendale Junction and the Pacific Highway, 28 miles north of Grants Pass, realized an ambition of long standing when he carved this rustic engine out of sections of logs using the chain saw and auger shown at bottom of the picture. Glendale school fifth grader Rita Sue Keaton admires the completed engine in its setting of Christmas trees.

Wellesley Offers Unique Program Of Financial Aid

Wellesley, Mass. — Wellesley college has announced a unique program of financial aid which will allow a student to convert an interest-free loan into an outright gift if she decides to leave.

Miss Margaret Clapp, president of the Women's college, said that the new aid plan would be open to American students entering Wellesley in the fall of 1961.

Principal features of the new plan are: —All entering students who need and are awarded aid by the college will receive the combination loan-gift for all four years and will be expected to earn something toward their expenses.

Conversion Automatic —After graduation, conversion of the loan to a gift will be automatic for each young woman who teaches in a public or private elementary and secondary school or college at the rate of 25 per cent conversion to gift for each full year of teaching completed during the first four years.

—The loan will be converted into a gift at the rate of 25 per cent per year for each completed year of study in a graduate school of arts and sciences or education, provided the study is followed by teaching within four or five years of graduation.

Miss Clapp said the program was similar to the National Defense Education Act scholarship program, but was more advantageous to the student because it made possible 100 per cent conversion of the loan into a gift. The federal program provides for about 50 per cent conversion.

She also emphasized that the Wellesley program required no "disclaimer affidavits." The college withdrew from the federal program last year in the wake of widespread dissatisfaction in academic circles with the so-called "loyalty oath" provisions of the federal program.

Three Considerations —In developing this "across-the-board" plan of combining loan and gift for all members of a class who receive financial aid, the (Wellesley) scholarship committee had in mind three related considerations, she said.

Miss Clapp listed the considerations as: "The likelihood of mounting costs of higher education in the next decade; the fact that the larger size of the average family will make it harder for many parents to pay as large a proportion of the cost of the education of each child as they have in the past, and the increasing numbers of students capable of benefiting from a college education."

Pay Hikes for State Employees Finds Favor

Editor's note: This is the second of four dispatches based on answers to a United Press International poll of Oregon legislators on issues facing the 1961 session.

By DOUGLAS GRIPP
Salem — UP — Heavy opposition has been expressed by state legislators to Gov. Mark Hatfield's proposed move of Oregon Public Welfare Commission headquarters from Portland to Salem next spring.

Several legislators have said they will take it up in the 1961 session.

These opinions and others were received from a substantial cross-section of the 1961 membership in answers to a mail poll conducted by UPI. Those who replied represented both parties and houses and all geographical sections of the state.

Sen. Monroe Sweetland (D-Milwaukie) said the legislature should "prohibit" the Welfare Commission move if there is "no other way to forestall it."

Sen. Robert Straub (D-Eugene) said there are "superior resources available in Portland" for welfare worker training and cited "unnecessary hardships" for the welfare staff in making the move.

The Legislative Interim Committee on Welfare is on record against the plan as well as the Welfare commission itself. In an opinion for the interim committee, Attorney General Robert Y. Thornton said that legally Hatfield can order the move but "primary authority" for its location rests with the legislature.

New Building Due
Hatfield wants the Welfare Commission in the new State Labor and Industries building in the Capitol Mall within three months after the building is completed. Completion is expected in April, 1961.

Most of the commission's 150 staffers have indicated they will quit first. Hatfield said he ordered the move for several reasons: —Availability of extra space in Salem.

—Need for space in the state office building in Portland to house other agencies, and a saving in costs. —The Oregon constitution calls for it.

—Better coordination with the governor's office. Hatfield points out that since county welfare agencies serve welfare recipients, the transfer will "in no way" reduce the quality or effectiveness of the service in the Portland area, or elsewhere. Hatfield also notes that the commission has a high rate of turnover in personnel in Portland and contends that Salem provides a "relatively stable labor supply."

The poll showed a three to one preference against the move with legislators generally following party lines, Democrats against and Republicans for it. A number of Republicans declared they would "have to be convinced."

Pay Hikes Discussed
On the topic of pay raises for state employees, the poll showed a heavy vote for "substantial" increases. The governor has recommended an average 10 per cent hike for state workers and 15½ per cent for higher education employees in 1961-63.

Oregon Civil Service Commissioner David Cameron says the state's employment problem is "acute" because of poor salaries compared to private industry and the federal government. Recruitment in some fields is impossible, he said. Many legislators said while they favor large increases for most state workers, they are against such increases for political appointees.

"There are some areas where substantial increases are essential," Rep. Clarence Barton (D-Coquille) commented. "For example the doctors at the institutions. I do not favor any great increases for political appointees, who could not be driven from Salem under any circumstances."

Only one legislator said state salaries should not be increased at all. **U.S. EMBASSY DAMAGED**
Washington — UP — Machine gun fire caused minor damage to the U.S. information service library in Addis Ababa during fighting in the Ethiopian capital several days ago, the State Department said Monday. No Americans were injured during last week's attempted revolution, according to the officials.

Ions are atoms with one electron added or removed.

Salt Water Conversion Process Is Developed

Washington — (Science Service) — A new process for the conversion of salt water to fresh water using the vapor reheat principle was described by D. F. Othmer, R. F. Benenati and G. C. Goulardis of the Polytechnic Institute, Brooklyn, N. Y., to the American Institute of Chemical Engineers meeting here.

The heat given off during the condensation of the evaporated water is used to heat the various stages as the pressure is progressively lowered. This lowers the energy and equipment requirements for the flash evaporation of sea water.

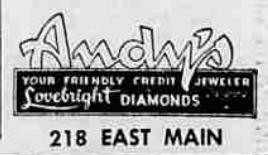
Winter Term Adult Classes Are Slated

The adult education winter term courses sponsored by Medford public schools begin the week of Jan. 3.

Classes are being held in general education, business education, hobby and craft, homemaking, electronics and auto mechanics.

During the five years, interest in evening courses has extended to 1,335 participants to 1,335 last year. About 80 courses which offer an opportunity for people to improve themselves are scheduled.

New classes being offered this term are conversational Russian and German, electrical typing, jewelry making and leathercraft. Registration will take place at the first class meetings.



Death Cutting Into Ranks of Picture Stars

Hollywood — UP — Death is decimating the ranks of movietown, ringing down the curtain on the golden age of the movies.

More than two dozen stars, directors and producers have died since Jan. 1, 1959, including Clark Gable, Cecil B. De Mille, Ethel Barrymore, Kay Kendall, Paul Douglas, Errol Flynn, Mario Lanza and Victor McLaglen.

Curiously, a large percentage of those who left the scene during this time were under 60 years old. Mario Lanza was only 38 when he died Oct. 7, 1959, Kay Kendall's meteoric career ended Sept. 6, 1959, at the age of 33, after a downhill fight to save her health.

Hollywood Shocked
The death of Wayne Morris, a youthful, vigorous 45, shocked Hollywood on Sept. 14, 1959. Pioneer moviemaker Mack Sennett lived into his 80s as did veteran character actors Fred Stone, Taylor Holmes and Edmund Gwenn.

The deaths this month of Gable, 59, Sennett, Ward Bond, 57, and Walter Catlett, 71, brought home to Hollywood the stunning realization that its ranks were being thinned rapidly by death.

TRACTOR PARADE — U.S. farms have more than four million tractors. **POPULATION TOTAL** — Indonesia has an estimated population of 85 million. **MAIN RIVER** — Glommen, Norway's principal river is 400 miles long.

here's a terrific value! 7-power imported binoculars **34.50** plus tax

with coated lenses
These extra-quality binoculars are regularly a \$49.50 value! Feather-weight vinylite aluminum body — only 21 ounces. Highest grade coated achromatic lenses. Pressure-tested, moisture-proof and rust-proof sealing. Field of view 367 feet at 1000 yards. Complete with hard leather velvet-lined carrying case and straps.

Also a complete stock of Bausch & Lomb, Carl Zeiss and other famous makes . . . Opera Glasses, Telescopes, Barometers and Thermometers.

We Give Green Stamps Convenient Credit

Columbian Optical Co.
Medford Shopping Center

Satisfaction Guaranteed Or Money Refunded

New! Practical and Beautiful!
Brews Better Coffee Every Time

WESTINGHOUSE SPOUTLESS COFFEE MAKER

\$16.95

No more stale oils collected in a spout . . . easy to clean . . . completely automatic.

Give a Gift that keeps on giving . . . Westinghouse (of course)

World's Tastiest HOT DOGS!
WESTINGHOUSE

Dog-O-Matic ELECTRIC HOT DOG COOKER

Cooks from one to 6 hot dogs — from the inside out — in 90 seconds. Lightweight, portable. Ideal for quick snacks, full meals!

\$7.95

NOW! COOKS A COMPLETE FAMILY MEAL

Westinghouse Immerse-A-Matic 12-inch Fry Pan

Washes completely under water . . . exclusive "Spread Even" heating element . . . two handles. Cover extra.

\$16.95

Control \$7.95
Fits All Immerse-a-Matic Appliances

Court Records

CIRCUIT COURT
Helen Virginia Parker vs. Charles Willis Parker, divorce decree.
Katherine Marie Bates vs. William Edward Bates, divorce complaint.
Stefanie A. Webber vs. Belden B. Webber, divorce complaint.
LaVelle V. Evans vs. William E. Evans, divorce decree.
Lee F. Smith vs. Wilma Francis Smith, divorce decree.
Howard James Tosten vs. Mildred Wilma Tosten, divorce decree.
Wanda Travis vs. Clifford Travis, divorce decree.

MARRIAGE LICENSE APPLICATIONS
Loret L. Fleming, 1408 Maple Lane, Grants Pass, and Sharon Rose King, 400 Cherry st., Central Point.
Dan Lee Christensen, 183 Black Oak dr., and Mary Luella Friend, 232 DeBarr ave., Medford.
Virgil R. Serr, Butte Falls Star route, box 90, Eagle Point, and Clarice Della Stadden, 2871 Howard ave.
Thomas Lawrence Garcia, box 741, Wolf Creek, and Norma Lucille Hayes, Wolf Creek.
Grant Dade Hamlin, 1324 Winchester place, Medford, and Betty Jane Ernst, 2991 Springbrook rd., Medford.

Arha Family Gift Center

OPEN EVERY NIGHT 'TIL 9

BEST SELECTION of Gifts for Everyone!

FREE GIFT WRAP

QUALITY AT LOWEST PRICES!

Tony Manno's ACME HARDWARE CO.

SPECIALISTS IN HOMEWARES!
245 S. Central at 10th • Phone SP 2-5201

SANTA'S SALE

ONE DOZEN FABULOUS BARBIE DOLLS

Will go on sale at 9 a.m. THURSDAY. First Come—First Serve—Limit One. No Phone Orders.

DOLLS — DOLLS

19.95 36-inch Dolls—Now Only 8.99
36-inch Walking Dolls 14.73
30-in. Fully Jointed Bride—Reg. 19.98, only 12.73
13.00 Tiny Tears, in Suitcase 9.99

PLUS MANY OTHER DOLLS REDUCED

DELUXE WONDER HORSE

Regular \$35.00 NOW \$23.99

WONDER MARE

Black and White, Regular \$25.00 NOW \$13.73

OPEN 'TIL 9 P.M. 'TIL CHRISTMAS!

Pool Tables, only 29.77	Junior Volleyball Sets 1.83
26.00 Tonka Fire Dept. 19.99	Double 12 Dominoes 2.87
10.00 Gas Powered Model Airplanes complete, ready to run—only 7.99	13.00 Tonka Hydraulic Fire Ladder Truck 9.73
10.00 Electrical Science Sets 7.99	2.00 Basketballs 1.67
3.00 Football Helmets 2.67	Electric Football, Baseball, Basketball 6.47
5.00 Pogo Sticks 4.47	3.50 Doll Play Pen 2.29
2.00 Jewelry Craft 1.67	3.00 Roy Rogers Dish Sets 1.97
Aggravation Game 4.77	Musical Rockers, reduced to 7.93
7.00 Cape Canaveral Sets 5.77	14.00 Toy Chest, only 10.87
10.00 Porter Chemistry Sets 8.77	11.50 Ball Bearing Wagons 9.47

SAVE 30%
ELECTRIC TRAINS

SEE OUR LARGE OPERATING DISPLAY

40.00 American Flyer, complete 27.73
16.00 Lionel Diesel, complete 12.98
14.00 Marks Steam 9.98

Best Selection and Prices From Portland to San Francisco

Thank you . . .
Moore's wish to thank everyone for their patronage this year and extend to all our best wishes for a MERRY CHRISTMAS and a HAPPY NEW YEAR.

FLASH
New Shipment of Kenner Building Sets Expected in Thursday

MOORE'S PATIO & TOY SHOP
816 S. Riverside - Medford, Ore.
Also Park Behind Store on Central Ave.

There will be no search for repair stations when your friend requires service on his gift (if he ever does with a Westinghouse). Trowbridge & Flynn stands behind all sales with a service department of 40 years' experience.

TROWBRIDGE & FLYNN
BIG Y APPLIANCE CENTER

214 W. MAIN
PH. SP 3-6241

PHONE
SP 3-3052