

Poor Losers Art Show Attracts Many Entries, Large Attendance

A unique idea in art shows was tried in the valley yesterday, and the idea caught on. The first annual Poor Losers show was held in the Medford hotel with works entered by 32 persons of various ages. They included artists, student artists, those who paint for fun and recreation and those who just wanted to support the venture.

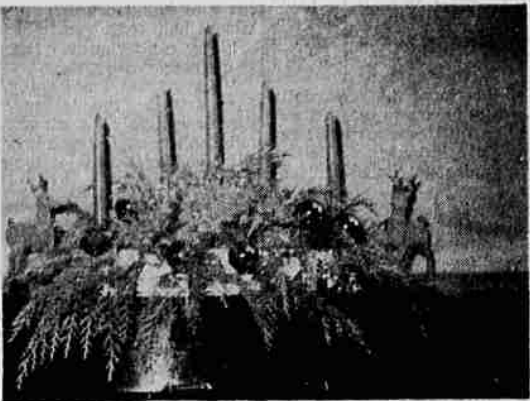
The Poor Losers show was the brain child of Robertson E. Collins, who enlisted the aid of James Ragland in staging the event.

The men, both devoted members of Southern Oregon Art association, decided that such a show would be a lot of fun - which it was - would

serve to call attention to the current first area competition show at Rogue gallery, a juried exhibit, and would earn money to support Rogue gallery, which it did. From entry and voting fees, enough was voted to bring a first-class show to Rogue gallery at some future date, they reported today.

There were judges for yesterday's show, too, three five-year-old boys. Interestingly enough, these small boys, Scott Danielson, Brent Bosworth and Todd Ragland, chose as their favorite of the large number of entries an abstraction painted by Victoria Staley of Eagle Point. Many guests at the show con-

Social Events Women's News



Pictured here is one of the Christmas arrangements which will be displayed during the house tour planned by Eagle Point Garden club for Wednesday, December 14. The decoration is of silvered Port Orford cedar tips and pink candle on a silver base. The cedar is accented with blue Christmas balls and pink miniature deer with golden horns, bells and tails stand at either side. Above the arrangement hangs a rope of silver tinsel with pink and blue Christmas balls at either corner and a silver angel suspended from the middle. This decoration will be displayed in the home of Mrs. Betty Claus, 311 South B street, and the home is being decorated by Mrs. Claus, her daughter, Patty, Mrs. Leland Meyer and Jimmy Knight. Also open for the tour will be the homes of Mrs. Steve Wilson, corner of Crater Lake highway and Dul-ton road; Mrs. Clarence Davies, corner of Bigham and Antelope roads, and Mrs. C. E. Kimmel, southern end of B street. Hours are 2 to 4:30 p.m.; tea will be served at the Grange hall, 2 to 5 p.m.

Christmas Cards Make Pretty Home Decorations

New York-Christmas cards are arriving with almost every mail delivery. You open and read them with pleasure and then wonder what to do with all these beautiful cards, so that their colorful designs won't be lost sight of during the holidays.

The best solution, of course, is to make them a part of your home decoration scheme for the Yuletide season.

With a pair of scissors, some self-adhesive tape, and a little

Club Holds Christmas Luncheon

Ashland - Ashland Garden club members met Monday in the Women's Civic clubhouse to complete their annual holiday decorations and to celebrate the Christmas season with their customary luncheon and gift exchange.

Featured along with traditional wreaths and swags of holly and evergreen were this year's most popular items, metal mesh plaques and dried arrangements. Copper spray gave the final touch of unusual decoration.

The day's guest speaker, Mrs. Audrey Sims of Medford, demonstrated a wide variety of arrangements, making use of such unorthodox materials as tin cans, egg cartons, flash bulbs and brush bristles. She fashioned table trees from feathers and chenille, flocked toothpicks, pink net, styrofoam and endless glitter.

Work was suspended at noon while the club members enjoyed a luncheon and gift exchange around their lighted trees. Patients at the mental hospital in Salem were also remembered with Christmas presents.

Christmas Benefit Party Given by University Women

Christmas was in the air at a benefit card party given by the Medford branch, American Association of University Women, Wednesday night at the Red Cross building.

Proceeds from the party were applied to the branch's \$1,130 quota for their national organization's new headquarters building in Washington, D.C.

A majority of the quota has already been raised by the local branch from various fund-raising projects. The new building was authorized at the 1957 convention in Boston with cost estimated at \$1,500,000. Based on a membership of about 145,000 women, per capita quota was \$10, to be raised preferably by voluntary contributions rather than by assessment.

Although no time limit was set, association leaders hoped the money could be raised in about three years. The building is known as the American Association of University Women's Educational Foundation Center.

The new center will be dedicated at the next national AAUW convention June 19 to 23, 1961, in Washington, D.C. The conventions meet biennially.

The Educational Foundation handles all research activities of AAUW, the management of the numerous fellowship funds and international grants and operates the Center. The object of the Foundation is to enable the organization to receive large gifts or grants from other Foundations or individuals which would be tax exempt to carry out research projects and then publish the findings.

At the recent card party travel posters, to each of which was added "Merry Christmas" in the language of the country illustrated, decorated the walls along with swags and medallions of metallic paper in many colors.

Mrs. George Johns and Mrs. William McLaren were co-chairmen for the party. Table cloths were made by a committee headed by Mrs. Vernon Gebhard. Mrs. Jack W. Love made the centerpiece, and Mrs. Robert K. Hood was in charge of the posters. Serving and clean-up were under the direction of Mrs. Glenn E. Tierman and Mrs. Edwin

Townsend Club To Hold Dinner

A baked ham dinner will be served at 12 o'clock noon Wednesday, December 14, at a meeting of the Medford Townsend club. Members meet at Walker's Dreamland, 419 1/2 East Main street.

A short business session will be followed by a Christmas program and gift exchange. Santa Claus will attend. The club voted last week to present Christmas gifts to two members who are unable to attend the party.

Visitors at last week's auxiliary meeting were Mr. and Mrs. Fred Corbin and Eugene Edwards of the Jackson Creek Fifty-Niners and J. P. Graham. Dancing concluded the session. All persons interested will be welcome at all Townsend meetings, officers report.



Mrs. Dwight Eisenhower and Mrs. John F. Kennedy paused in the South Grounds after the first lady took the future first lady on a surprise tour of the executive mansion Friday. Mrs. Kennedy went to the White House within two hours after she left Georgetown hospital with her infant son.

108th Installation Held By Masonic Lodge in Yreka

Yreka - James P. Rea was recently seated as 1961 worshipful master of Howard Lodge, Free and Accepted Masons, in a ceremony held in Yreka Masonic temple. This was the 108th installation of officers of the organization.

Other officers installed to serve with Master Rea were Gerald B. Hopkins, senior warden; John R. Collier, junior warden; William L. Harris, treasurer; Norman Kinney, secretary; Howard K. Cramer, chaplain; Donald W. Herfindahl, senior deacon; Carl A. Franson, junior deacon; Floyd D. Manning, marshal; Jack L. Wayne, senior steward; Harry N. Scammell, junior steward, and Clyde W. Landon, tiller.

George Ward, a past master

Levine Show At Gallery

Ashland - Paintings by Shepard Levine are now on exhibit at Southern Oregon college Britt Art gallery through the end of this term, December 16.

Mr. Levine is on the resident art faculty of Oregon State college now in his seventh year of teaching at that institution. He has also taught at the University of Oregon and at the University of New Mexico where he received both his undergraduate and graduate degrees. Further study at the Faculte des Lettres, University of Toulouse in France.

The artist's works have been widely exhibited in both this country and abroad. These exhibitions include numerous one-man shows in various galleries and museums such as the Addison Gallery of American Art, Brooklyn Museum, New Mexico Museum of Art, Seattle Art Museum, San Francisco Museum of Art, and Portland Art Museum.

In addition to having his paintings in many private collections, Mr. Levine has won prizes for his prints and paintings.

The exhibit is open to the public during school hours and on Monday, Tuesday, and Wednesday evenings from 1 until 9 in Britt center, room 117.

New Exemplar Chapter Formed

The new Exemplar chapter of Beta Sigma Phi held its first meeting at the home of Mrs. Larsen December 5. This is the second Exemplar chapter in Medford to be formed.

Election of officers was held, with Mrs. Larsen named president. Vice president will be Miss Jean Cardona; recording secretary, Mrs. Irving Thompson; Mrs. Howard Mitchell, treasurer; Mrs. Floyd Robertson, corresponding secretary, and Mrs. Richard Knoll, Beta Sigma Phi city council representative.

Committee chairmen were appointed by the president. They are Mrs. William Tycer, social chairman; Miss Cardona, program chairman; Mrs. Wayne Turpin, ways and means chairman; Mrs. Knoll, publicity chairman.

A "kick-off party" for all eligible members for the Exemplar degree will be held at the home of Mrs. Irving Thompson, 320 North Ivy street, January 11.

Unit To Hold Dinner Session

Medford Home Extension unit will hold the annual Christmas meeting and dinner Wednesday, December 14, at 10:30 a.m. in Santo hall, U.S. Army Reserve building, 701 North Columbus avenue. Members not already contacted are asked to take salad or desert. All members are to take table service.

Presbyterians Slate Events

Phoenix - "The King's Men" will meet at the Phoenix First Presbyterian church Tuesday at 7:30 p.m. The Rev. William Saladin will lead a study in I Corinthians.

All men of the Phoenix Presbyterian church choir have been asked to meet Wednesday at the Phoenix First Presbyterian church from 7 p.m. and all choir members from 8 to 9 p.m.

Thursday, Phoenix First Presbyterian church Women's association will meet from 10 a.m. to 3 p.m. at the church. A session meeting will be held at 7 p.m. the same day in the church.

Coffee Hour

Gold Hill - Mrs. James Wilson will be hostess for the Sardine Creek neighborhood coffee hour at her home Tuesday, December 13 at 1 p.m. All newcomers to the Sardine Creek area are especially invited.

Unit To Hold Dinner Session

Medford Home Extension unit will hold the annual Christmas meeting and dinner Wednesday, December 14, at 10:30 a.m. in Santo hall, U.S. Army Reserve building, 701 North Columbus avenue. Members not already contacted are asked to take salad or desert. All members are to take table service.

Coffee Hour

Gold Hill - Mrs. James Wilson will be hostess for the Sardine Creek neighborhood coffee hour at her home Tuesday, December 13 at 1 p.m. All newcomers to the Sardine Creek area are especially invited.

Unit To Hold Dinner Session

Medford Home Extension unit will hold the annual Christmas meeting and dinner Wednesday, December 14, at 10:30 a.m. in Santo hall, U.S. Army Reserve building, 701 North Columbus avenue. Members not already contacted are asked to take salad or desert. All members are to take table service.

Coffee Hour

Gold Hill - Mrs. James Wilson will be hostess for the Sardine Creek neighborhood coffee hour at her home Tuesday, December 13 at 1 p.m. All newcomers to the Sardine Creek area are especially invited.

Unit To Hold Dinner Session

Medford Home Extension unit will hold the annual Christmas meeting and dinner Wednesday, December 14, at 10:30 a.m. in Santo hall, U.S. Army Reserve building, 701 North Columbus avenue. Members not already contacted are asked to take salad or desert. All members are to take table service.

Coffee Hour

Gold Hill - Mrs. James Wilson will be hostess for the Sardine Creek neighborhood coffee hour at her home Tuesday, December 13 at 1 p.m. All newcomers to the Sardine Creek area are especially invited.

Unit To Hold Dinner Session

Medford Home Extension unit will hold the annual Christmas meeting and dinner Wednesday, December 14, at 10:30 a.m. in Santo hall, U.S. Army Reserve building, 701 North Columbus avenue. Members not already contacted are asked to take salad or desert. All members are to take table service.

Santa Visits Ashland Club

Ashland-Santa Claus made an unscheduled personal appearance in Ashland Wednesday night when he visited Wesley House just as members of the Business and Professional Women were finishing their Christmas refreshments.

From his well-filled pack he distributed gifts to each of the 28 club members and guests before hurrying back to "finish up" at his toy shop before the Big Night arrives.

Hostesses for the annual party were executive board members who served refreshments from a candlelit tree-centered table. A blazing log in the fireplace and candles on the mantle and in the windows gave a festive air to the evening's entertainment.

A group of Christmas duets, sung by Barbara Ward and Karen Baker of Ashland Junior High school, and accompanied at the piano by Mrs. Adelaide Spencer, keyed the holiday program.

Charades and games were enjoyed during the rest of the evening and no business session was conducted. Mrs. Louise Myers and Mrs. Hodie Jacobs, president and vice president of the club, were in charge of the Christmas program.

Now Your Choice of Potatoes

at EASTSIDE

- IDAHO RUSSETS
- COLORADO REDS
- KLAMAH RUSSETS
- DESCHUTES NETTED GEMS

Tinted Coconut

Tinted coconut is ideal for decorating candies, cookies and cakes. Place 1 teaspoon milk or water in a bowl; add a few drops of vegetable coloring and mix well. Add 1 1/2 cups shredded coconut and toss with fork until coconut is tinted through. Spread on waxed paper and allow to dry before using.

SHOP and COMPARE

LOW FOOD PRICES EVERY DAY OF THE WEEK!

LYNN'S Personal Service MEATS

USDA CHOICE T-BONE STEAKS lb. \$1.09

If you happen to have a glass top coffee table, Christmas cards held under the glass by cellophane tape will picture a winter wonderland. The same cheerful effect may be gained by using the mirror in your living room.

Here's another thought-try starting a parade of Christmas cards across your window-sill for passers-by to see. Pick out a diminutive Santa in his reindeer-driven sleigh to lead the way. Familiar Christmas symbols such as church bells, glowing candles, and small groups singing Christmas carols are very appropriate in these window parades.

As a special touch, place several of the most beautiful Christmas cards you receive - those with religious scenes of the Christ Child or the Madonna - in an appropriate picture frame. It's a wonderful way to keep the spirit of Christmas in your home all year long.

Add-a-Card

You can also develop an "add-a-card" Christmas art exhibit. Secure some of the new shiny black electrical adhesive tape. Affix lengths of this tape to a molding or to the valance of a venetian blind, with the adhesive side turned out, and then, as your Christmas cards arrive you can quickly mount them on the black tape so that eventually you'll have several rows of cards on display. To hold the mounted cards in place you can affix the tape to the floor or to the bottom of the venetian blind.

For final touches, of course, you'll always want to have lots of cards on the mantelpiece or attractively arranged on the piano, and in other locations around the living room.

- Sausage Rolls 1-lb.-each 39¢
- Bacon Armour's Banner 1-lb. pkg. 55¢
- Grapefruit Fancy Large Ruby Red 6 for 49¢
- Bananas Golden Ripe Hands 2 lbs. 29¢
- Oranges Full o' Juice 5 lbs. 49¢
- Baking Squash lb. 3¢



608 E. Main Eastside SUPER MARKET

bag these FOOD BUYS!

Hills Bros. Coffee 1 lb. . . . 49¢ 2 lbs. . . . 97¢

SPRY 3 lbs. 69¢

Delrich MARGARINE 5 lbs. 89¢

Occident FLOUR Occident's New Bag 10 lbs. 88¢

Star Kist Chunk Tuna 4 1/2 cans 89¢

Tomato Juice Campbell's 46 oz. can 3 for 77¢

Chocolate Bars Nestle's King Size 3 Reg. \$1 39¢

Lunch Meal Black Hawk 2 12 oz. cans 79¢

Fresh California or DATES FRESH ROASTED PEANUTS YOUR CHOICE 3 lbs. \$1.00

You Will Love the HOLIDAY MATERNITY FASHIONS At LaPointe's

OPEN EVERY DAY 8 A.M.-9 P.M. SILVER DOLLAR STAMPS