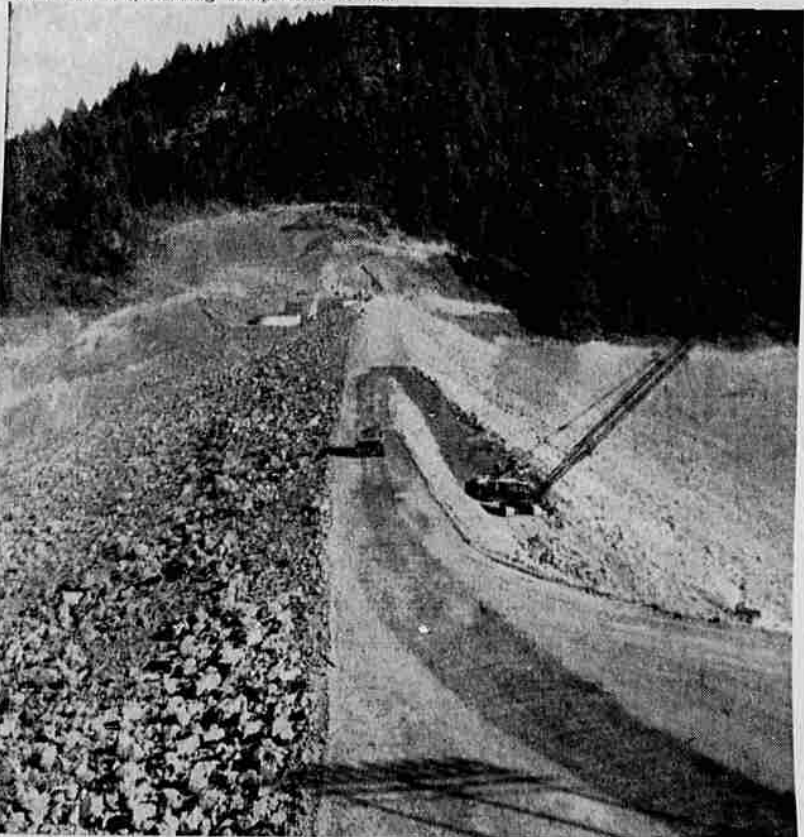


Trinity Division of CVP Nearing Completion



NEARING COMPLETION - The final load of clay was placed and packed into place in the Trinity river dam in northern California recently. This picture shows the dam, at lower left, nearing completion. It was



RIPRAP PACKED - Riprap is being tamped paved with asphalt, is 40 feet wide. The in place on the Trinity river dam in north- 337-foot high dam is 2,450 feet long and is ern California. The roadway, which will be 2,962 feet wide at the base.

Riprap Is Placed On Big Earth-Fill Dam in California

By KATHERINE CHAPMAN
Mail Tribune Correspondent

"What will you do without water?" was the thought-provoking question asked in advertisements appearing recently in many nationally-circulated periodicals.

In an attempt to guarantee that this and future generations in California may not have to learn the devastating and death-dealing answer to that question, a plan was spawned in the minds of government engineers. And this was brought into being the Central Valley Project in California.

The construction of the CVP got actively under way in 1937, and by August, 1951, all the works comprising the initial project were in operation. These included Shasta Dam, Delta Cross Channel, Delta-Mendota canal, Friant dam, Madera canal, Friant-Kern canal, Contra Costa canal and a power transmission system.

Regulate Water
In addition to these units, Keswick dam was authorized and built to regulate the fluctuating power releases from Shasta Dam and to add to the power capacity of the project.

In 1949, Congress authorized the construction and operation of the American river unit, including Folsom dam and power plant, Nimbus dam and power plant, and the Sly Park project as part of



TRINITY RIVER - The Trinity river is shown as it flows toward the bottom of the earth-fill dam. The tree line shows the level of the water once the reservoir is filled.

the CVP. All features of the project have been integrated into a unified operations system.

Now the project is being further expanded by the construction of the Trinity division of the CVP.

Transport Water
These works will operate to transport an average of 865,000 acre-feet of water from the Trinity river watershed into the CVP system each year.

(An acre-foot of water is the amount of water covering one acre to the depth of one foot. This is equivalent to 43,560 cubic feet, or a cubic foot per second for 12 hours.)
The power facilities will have some 384,000 kilowatts

of generating capacity.
Work on Trinity dam was begun several years ago, and on Sept. 23 this year, the final load of clay in the center of the \$49,000,000 dam was tamped and rolled into place. A layer of riprap and the 40-foot asphalt road on its crest line are now being completed.

In Two Counties
The Trinity river division features are located in Trinity and Shasta counties. The dam is located in the rugged evergreen country of northern California about nine miles upstream from the town of Lewiston, on the

Trinity river.
At Lewiston dam, the Trinity river is about 1,400 feet higher in elevation and 20 miles west of the Sacramento river at Keswick dam. The town of Lewiston is reached by driving on Highway 99 to Redding, thence west on 299 for 43 miles, thence six miles north on a well-marked turn-off road.

An amazing engineering feat connected with this project is the Clear Creek tunnel. Seventeen feet, six inches in diameter, this tunnel is being drilled 11 miles through a mountain. By means of this tunnel, water will be diverted from Trinity dam to the Sacramento river.

Fascinating Aspect
To the layman watching construction operations, one of the most fascinating aspects is the high-speed conveyor system that rushes clay and rock at a 3,000-ton-an-hour clip from a mountain to a river valley two miles away—and there is being reshaped into this world's-highest earth fill dam—465 feet above the streambed of the Trinity river.
A signboard posted on the look-out point at the dam

site tells the rest of the story, statistics-wise. The sign, in part, reads:
"Type-Earth Fill.
"Structural height—537 feet.
"Height above streambed—465 feet.
"Crest length—2,450 feet.
"Maximum width at base—2,962.
"Width at crest—40 feet.
"Volume of material in dam—33,180,000 cubic yards.
"Elevation of crest of dam—2,395.
"Elevation of crest of spillway—2,370.
"Reservoir area at maximum normal storage—16,400 acres.
"Maximum reservoir capacity—2,500,000 acre feet.

"Usable reservoir capacity—2,160,000 acre feet.
"Drainage area—688 square miles.

"Six million truck miles will be traveled to place all the material in the dam.
"It would take 815,000 trains of 100 tank cars each to haul enough water to fill Trinity reservoir. The required tank cars would reach around the world 26 times.

40 Story Building
"The dam will be as high as a 40 story building and two Empire State buildings layed end to end in the river channel would be completely covered in the dam."

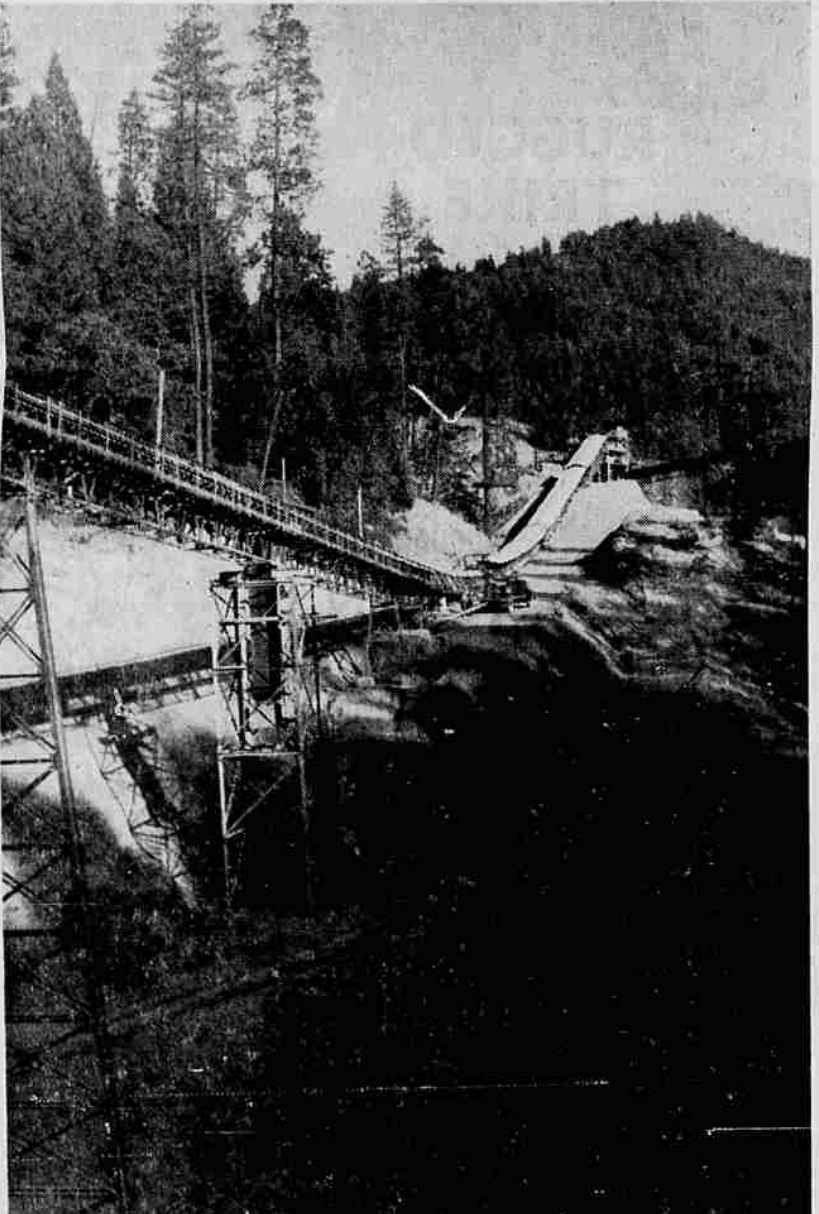
Although work is progressing steadily on the mammoth project, no estimated date of completion has been released as yet.

And the passage by the people of California at the recent election of the California Water Resources Development Bond Act will enable work on the Feather River project to swing into action in the near future.

Provides for Bond Issue
"This act provides for a bond issue of \$1,750,000,000 to be issued by the Department of Water Resources for the development of the water resources of the state, and becomes the largest bond issue ever to be underwritten by any state.

Funds thus provided will bring into being a dam on the Feather river above Oroville, Calif., and a 500-mile long man-made river to divert the precious water from the north to the south end of the state.

Truly it has been said—"Water, the most important work in the winning of the West."



CONVEYOR BELT - This view shows the end of a two-mile long conveyor belt at the Trinity river dam project. The highway where the belt terminates is just out of the picture in the foreground. The belt, when the project is complete, will have moved an estimated 33,180,000 cubic yards of material from a nearby mountain at 3,000 tons an hour.

TABU

305 SOUTH RIVERSIDE

Announces THE OPENING ONCE AGAIN

of MEDFORD'S ORIGINAL

Smorgasbord

STARTING MONDAY, DEC. 12
Hours 11 A.M. to 2 P.M. - 5 P.M. to 10 P.M.

LUNCH	\$1.25
DINNER	\$1.85
CHILDREN under 12	85¢

EAT ALL YOU CAN ENJOY
OVER 35 DELICIOUS ITEMS TO CHOOSE FROM

YOUR FAVORITE BEVERAGES SERVED FROM OUR LOUNGE

MARY and HUGH LAPPIN, Owners and Managers

Mrs. Kennedy Gets White House Tour
Washington—Mrs. John F. Kennedy, wife of the president-elect, was given a tour of the White House today by Mrs. Mamie Eisenhower.
The surprise visit was announced by White House Associate Press Secretary Mrs. Anne Wheaton a few minutes after Mrs. Kennedy arrived at the White House.
The future first lady went to the White House within two hours after she left Georgetown Hospital with her infant son.
Mrs. Eisenhower had announced recently she would extend to Mrs. Kennedy the same courtesy Mrs. Harry Truman had extended to her eight years ago—a tour of the executive mansion's rooms and housekeeping facilities.

TURKEY & HAM DINNERS

Straight from the oven to you. With all the trimmings **\$1.00**

TIMBER ROOM Open 6 am—10 pm

3 South Riverside

Delicious Spanish Food

at **THE FLAME**

125 West Main Street

We have a NOON Spanish Food Special EVERY DAY
... at Reasonable Prices!

STEAKS and BAR-B-Q

Open from 10 a.m. to 8 p.m. Closed Sundays

GAY 90'S PIZZA PARLOR

1132 N. Riverside—Next to OK Market

12 VARIETIES of oven fresh PIZZA PIE

Pizza To Go! Call SP 3-9169

Open 4:30 p.m. to 1 a.m. Mon. thru Fri.
12 Noon to 12 p.m. Saturday and Sunday

Held Over By Popular Demand . . .

TONY MARTINI

The WOODEN SHOE is happy to feature this outstanding entertainment!

2 SHOWS NIGHTLY

THE NEW AND EXCITING VOICE OF

TONY MARTINI

Night Club—TV—Stage
SINGING STAR

Dine Out Here!

DINING ROOM HOURS

Lunches Served 11:30 a.m. to 5 p.m., Monday Thru Friday
Dinners Served 5 p.m. Until Midnight, Monday Thru Saturday

Sunday Hours—3 p.m. Until 9 p.m.
Featuring Steak Specialties . . .

Baby Beef T-Bone	\$1.19
Market Steak	\$1.45
8-Oz. Tender	\$1.55
Potato—Rolls—Butter.	

Phone SP 2-6203 for Reservations

WOODEN SHOE

IN THE HOLLAND HOTEL
Fir and 6th