



CHAPEAUX FOR JACKIE—Lynn Cooper of Riverside, Ill., models a per and patriotic chapeaux designed for President-elect John F. Kennedy's wife, Jacqueline, in honor of the birth of their baby, John F. Kennedy Jr. The 300-flag creation is being sent to Mrs. Kennedy in Washington, D.C. It was designed by a Chicago hat firm. (UPI Telephoto)

Kettles Appear On Streets for Corps' Projects

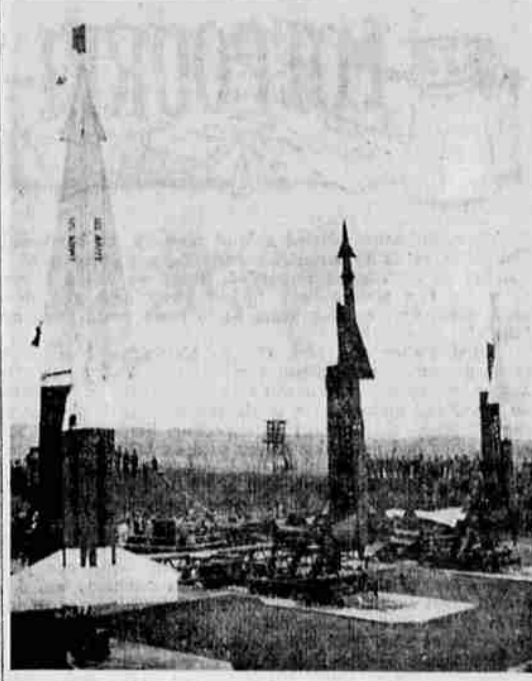
The familiar Salvation Army Christmas kettles appeared on the streets of Medford, Ashland and Grants Pass Friday and will continue through Dec. 24. The money received will be used for Christmas activities of the Medford Corps.

Last year in the Medford area 174 families were given Christmas baskets by the local Corps, according to Sr. Capt. William Ricken. In addition to the baskets a children's party was held at the Salvation Army hall for more than 300 children between the ages of 5 and 15. They were given candy, gifts and had a visit from Santa Claus.

Some 2,400 gift bags were made and distributed to residents at the Veterans Administration domiciliary, White City, city hospital patients, the county farm home and rest home residents and to prisoners in the city and county jails.

At the Salvation Army shelter some 56 men and women were served a turkey dinner on Christmas day and were given gifts and Christmas reading material.

Captain Ricken said that the Christmas activities of the local Corps cost about \$6,000. The Christmas committee of the local Salvation Army Advisory board is headed by Murray Gardiner.



NIKE ON DISPLAY—Soldiers and civilian spectators at Darmstadt, West Germany, look over a display of U.S.-made Nike anti-aircraft missiles on their launching platforms. A temporary Nike installation has been in use at Darmstadt since 1958 but the permanent emplacements were finished only recently. (UPI Telephoto)

Second Reno Attorney Dies

Reno—(UPI)—Reno attorney Edwin Mulcahy, 40, died at the Washoe Medical Center early today as the result of wounds received in a courtroom shooting spree Wednesday.

Mulcahy had been shot in the liver and spleen.

Sand and gravel contractor Robert H. Williams, 52, went berserk in the court of District Judge Jon Collins Wednesday afternoon in the midst of a land partition suit involving him, his estranged wife and her mother.

Hatfield To Reveal Reorganization Plans

Salem—(UPI)—Gov. Mark Hatfield's office announced today the Governor will reveal his government reorganization proposals on Dec. 15. A news conference has been set for 10 a.m.

Hatfield is expected to recommend a cabinet system of government to the 1961 legislature.

Gov. Hatfield Has Busy Week Ahead

Salem—(UPI)—Gov. Mark Hatfield, who arrives home from South America tonight, has a busy week ahead of him.

Tuesday he will meet with his advisory committee on natural resources and Wednesday he has office appointments.

He has called a press conference for 2:30 p.m. Thursday to discuss his budget recommendations to the 1961 legislature.

Friday morning he will address Oregon's delegates to the White House Conference on Aging and Friday night he speaks to a Portland meeting of the Pacific Coast section of the American College Health Association.

Saturday he will attend the Oregon Republican caucus in Salem.

Ullman, Phair File Campaign Expenses

Salem—(UPI)—A report filed today in the State Elections Division shows the committee to elect Congressman Al Ullman had contributions of \$7,675 in the general election campaign, and expenses of \$9,229.

Ullman, Baker Democrat, was successful against Ron Phair, Klamath Falls farmer, in the Second district. Phair's Republican campaign committee listed contributions of \$16,732 and expenses of \$20,788.

A supplemental report filed by Marv Owens of St. Helens, unsuccessful Democratic candidate for Congress in the First district, lists contributions of \$1,308 and expenses of \$1,827 plus Owens' personal expenses of \$150.

Western Oregon Rivers Dropping

Portland—(UPI)—Western Oregon rivers sent over flood stage last week by torrential rains were back in their banks today, while Eastern Oregon got some frigid weather.

The mercury dropped to 6 above at Lakeview and 7 above at Burns early today. Klamath Falls, where the temperature did not get above freezing Sunday, had a low of 16 early today.

The Willamette river dropped nearly two feet in 24 hours at Corvallis and was at an even 13 feet this morning. Flood stage there is 20 feet. At Albany it was 12.6 and at Salem 13.5.

The Santiam at Jefferson was up slightly at 10.7, but was still below flood stage.

Truman Says AMA Opposes Betterment

New York—(UPI)—Former President Harry S. Truman today charged that the American Medical Association opposition to Kennedy's medical plan for the aged was the result of the AMA's being "against anything for the welfare and benefit of the people."

Truman, in a morning walk before returning to Kansas City, called the AMA "mean," "onery," and "the biggest trust in the world."

He attacked the association in commenting on AMA leaders' statements at the annual clinical meeting in Washington Sunday that they would use their "tremendous strength" to prevent passage in Congress of Kennedy's plan to tie medical care for the aged to the social security system.

Mrs. G. B. Davidson Passes CIA Exam

Mrs. Giroud B. Davidson, office manager of Medford Insurance Agency, was one of six candidates who passed the Certified Insurance agent examination this fall. Twenty-seven persons took the examination in September in Portland.

Mrs. Davidson is the second woman in Oregon to earn the CIA designation, it was reported. Mrs. Doris V. Rushing, Portland, passed the examination in 1958. Of the 68 members of the Oregon Association of Independent Insurance Agents who have earned this designation, six are from Medford.

Greyhound Cafe Gets Certificate

Don and Ralph's Greyhound cafe has been awarded a Greyhound "traveler approved" certificate, according to the Western Greyhound Lines officials.

The cafe, operated privately by Ralph Emrick and Don Fiedler, is one of four eating places selected by the Lines in this district. The others are in Klamath, Calif., Coos Bay and Gold Beach.

The Medford cafe serves more than 650 meals to Greyhound travelers daily, it was reported.

Wheatland Ferry Bridge Closed by Water

Salem—(UPI)—The bridge to Wheatland Ferry north of here closed over the week end due to high water on the Willamette river.

Marion county officials said today it will probably be at least several days before crews can begin repair work. The water also closed a portion of Wheatland road.

Fourth Largest New Delhi - India's railway system is fourth largest in the world with 34,000 miles.

PROOF

THAT THE QUALITY

1961 MERCURY

IS NOW A **LOW-PRICE CAR**

ONLY **\$2891⁴⁰**

INCLUDING ALL THIS EQUIPMENT

- AUTOMATIC TRANSMISSION
- PUSH-BUTTON RADIO
- DE LUXE HEATER-DEFROSTER

HERE IS AN ACTUAL PRICE LABEL TAKEN FROM A NEW 1961 MERCURY METEOR 600. YOU'LL FIND IT ON THE WINDOW, ACCORDING TO THE FEDERAL AUTOMOBILE INFORMATION DISCLOSURE ACT. IT PROVES MERCURY HAS A DRAMATIC NEW LOW PRICE!

LOOK!

2 Door Sedans	Local Delivered Price*	Dollar Difference for Comparable Mercury Model
MERCURY METEOR 600-6 CYL.	\$2,891.40	
CHEVROLET BEL AIR-6 CYL.	\$2,855.75	\$35.65 less
PLYMOUTH BELVEDERE-6 CYL.	\$2,859.00	\$32.40 less
DODGE DART PIONEER-6 CYL.	\$2,880.70	\$10.70 less
MERCURY METEOR 800-8 CYL.	\$3,193.20	
CHEVROLET IMPALA-8 CYL.	\$3,125.55	\$67.65 less
PLYMOUTH FURY-8 CYL.	\$3,206.00	\$10.80 more
DODGE DART PHOENIX-8 CYL.	\$3,226.60	\$31.40 more
PONTIAC CATALINA-8 CYL.	\$3,201.43	\$1.77 more
OLDS DYNAMIC 88-8 CYL.	\$3,415.43	\$220.23 more
BUICK LE SABRE-8 CYL.	\$3,367.20	\$172.00 more

*Includes transportation, automatic transmission, push button radio, deluxe heater and defroster. Prices may vary slightly because of transportation cost differences. **Two door hardtop models. Two door sedan not available.

Mercury Meteor 800—2 door sedan

1961 MERCURY

METEOR 600
METEOR 800
MOTORCYCLE
the better low-price car.

MEDFORD MOTORS, Inc.
225 South Riverside



END OF MONTH FOOD SAVINGS

at So. Oregon's Favorite Market! You get more of everything with THRIFTY GREEN STAMPS!



6th & Grape
STORE HOURS: Open every night until 9 p.m., seven days a week!

TREND LIQUID DETERGENT quart size **69¢**

REYNOLD'S ALUMINUM FOIL HEAVY DUTY 18 IN. x 25 Foot Roll **69¢**

MD TOILET TISSUE 4-Roll Pack **39¢**

Del Monte
Pineapple-Grapefruit **DRINK**
46-oz. cans—Reg. 3 for \$1.00
4 CANS \$1

We're happy to cash your pay check!

Maxwell House Coffee One-Pound Can **49¢** Two Pound **97¢**

Campbell's Pork & Beans 28-Oz. Can **4 Cans \$1.00**

Campbell's Barbecue Beans 16-oz. Can **2 Cans 39¢**

Campbell's Beans & Franks 16-oz. Can **EACH 39¢**

Miracle Whip Salad Dressing QUART **49¢**

White Star Tuna Solid Pack 1/2 Size Cans Reg. 45c **3 Cans \$1.00**

Golden Valley Cider GALLON JUG **79¢**

Snowdrift SHORTENING
The Wesson Oil Shortening
Reg. 89c
3-Lb. Can **59¢**

SUNSHINE HI-HO CRACKERS One pound, reg. 37c **29¢**

GROCETERIA BAKERY!

CINNAMON BREAD loaf **35¢**

CINAMMON CHUNK loaf **37¢**

Young, Tender PORK ROASTS **39¢**

Lean, Center Cut PORK SHOULDER STEAK **49¢ lb**

GROCETERIA'S LEAN GROUND BEEF **39¢ lb**
10 Pound Package..... **\$3.75**

