



Wall Street Chatter

New York — (AP) — The declining trend in earnings of the chemical industry is likely to continue for another six months at least, the Value Line Investment Survey reports.

It says that price increases necessary to offset higher costs are just not possible under today's marketing conditions.

In addition, Value Line points out that available supply exceeds demand by a large margin in almost every chemical commodity.

Bache & Co. reports that the recent action of Industrial Rayon both on the ticker tape and on its chart shows signs of slow but steady accumulation. Bache recommends this issue only for those willing to assume a high degree of speculative risk, noting that chances of a significant price move should continue favorable as long as the issue remains above 16.

B. K. Thurlow of Winslow, Colo., and Stinson says that St. H. Kress shortly may agree to be taken over by another retailer at around \$3 a share.

Miss Taylor To Speak in Ashland

Ashland—High school students here are scheduled to hear DeAnne Taylor, 1960 foreign exchange student from Medford, in a special assembly Tuesday at 8:45 a.m., according to Student Body President Jim Lewis.

Miss Taylor, who spent the summer months in West Berlin, Germany, under the auspices of the American Field Service, has been invited by the student council to relate her summer's experiences and explain the AFS exchange program. Since her return home in September, the Medford High senior has spoken to more than 500 people concerning her trip on some 15 formal occasions.

At the present time Ashland is just developing a local AFS committee, and hopes to sponsor a foreign student next fall. Among other individuals and groups, the local Rotary club is encouraging AFS activity.

Gaylord Smith, AFS principal and acting committee chairman, said recently that the Medford student was invited to appear on request of the high school students who are "bringing about" interest in the AFS program. The school hopes to send a local teenager abroad under the summer program in 1962.

The principal didn't disclose further AFS committee personnel at this time.

President Lewis said students here are scheduled to find out "what's going on." He added the assembly would last about 30 minutes.

Ike Plans Day Of Quail Hunting

Augusta, Ga. — (AP) — President Eisenhower has decided to wind up his vacation Tuesday with a day of quail shooting on a south Georgia plantation.

The chief executive planned to fly 250 miles to the southeast corner of the state early Tuesday morning to the Blue Springs plantation of W. Alton Jones, board chairman of Citicorp's Service Corp., an old friend.

Eisenhower will be hunting for quail, remain overnight and fly directly to the nation's capital late Wednesday afternoon, the White House said.

The President spent a week end at Jones' estate last January to tramp the fields for quail. The quail season opens Sunday in Georgia.

The President stopped briefly in his office this morning, then stepped to the practice range to sharpen his golf driving.

He planned to play his final round of golf later today at the Augusta National club.

Quotes From the News

BY UNITED PRESS INTERNATIONAL

Leopoldville, The Congo — Frank Carleton, one of the two U.S. Embassy staff members killed by a mob of Africans after their car accidentally killed a 12-year-old boy, discussing the incident:

"It is the boy we are sorry about. I hope we can do something for him."

Miami — Vice President Richard M. Nixon, on a filmed television interview, squelching a rumor about his future plans:

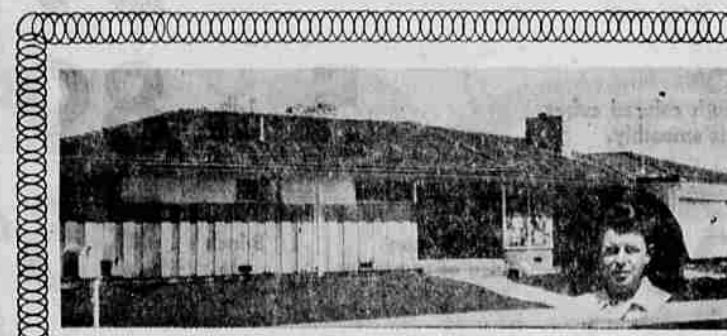
"I do not intend to join any law firm in New York that includes Mr. (Thomas E.) Dewey's."

Washington — Mrs. Hazel Landman, placement officer in charge of finding new jobs for employees of Congressmen who won't be back next term, stating that most of the workers are chummy about their boss:

"Some insist they will work only for a liberal and others want to work for a congressman with a conservative viewpoint."

London — Actor Pete O'Toole, discussing how he feels about having been selected for the movie part of "Lawrence of Arabia":

"How did I feel? Scared. I tell you, scared."



Sew-Swiftly Duo



Graceful princess lines fashion the jumper that doubles as a dress for 3 P.M. and after! Clever blouse "fills in" the neckline fashionably. Easy-sew.

Printed Pattern 9183: Misses' Sizes 10, 12, 14, 16, 18, 20. Size 16 jumper takes 3 1/4 yards 39-inch; blouse 1 1/4 yards.

Send FIFTY CENTS (coins) for this pattern—add 10 cents for each pattern for first-class mailing. Send to Marian Martin, Medford Mail Tribune, Pattern Dept., 237 West 18th St., New York 11, N.Y. Print plainly NAME, ADDRESS, SIZE and STYLE NUMBER.

New! Send now for our 1960 Fall and Winter Pattern Catalog—every page in color! Over 100 styles for all sizes, all occasions plus colors... 35c.

"I use electric heat in homes I build because in this damp climate it is the type heat most people ask for..."

WILBUR C. LITTLE - Contractor - Crescent City

FOR FULL INFORMATION ON SAFE, CLEAN, ECONOMICAL ELECTRIC HEAT, VISIT A CAL/ORE ELECTRICAL LEAGUE DEALER OR ELECTRICAL CONTRACTOR:

BAUMER'S SHEET METAL & HEATING
840 N. Riverside—Medford—SP 3-1346

BROOKS ELECTRIC
116 N. Riverside—Medford—SP 2-5209

COURT STREET ELECTRIC
1127 Court Street—Medford—SP 2-2463

RUSH ELECTRIC COMPANY
ELECTRONIC SERVICE
18 N. Grape—Medford—SP 3-1971

ENLOE ELECTRIC
Rt. 1, Box 415—Talent—KE 5-1269

FELDMAN & OLSON
237 East Main—Medford—SP 3-2811

HARRISON ELECTRIC
Rt. 2, Gibson Road—Central Point—NO 4-2991

MODERN PLUMBING & SHEET METAL
613 East Jackson—Medford—SP 3-3368

ROGUE ELECTRIC SERVICE
961 Shafter Lane—Medford—SP 2-6693

RUSH ELECTRIC COMPANY
1023 S. Riverside—Medford—SP 2-1960

TROWBRIDGE & FLYNN
214 West Main—Medford—SP 3-8241

YOW'S HEATING, AIR CONDITIONING & SHEET METAL
1729 N. Riverside—Medford—SP 2-4524

RYAN ELECTRIC SUPPLY
111 West Main—Medford—SP 3-1841

TAYLOR SHEET METAL
837 South Riverside—Medford—SP 2-6341

GRAHAM'S ELECTRIC SERVICE
1605 Sage Road—Medford—SP 2-8950

WIRE YOUR HOME FOR MODERN, LOW-COST ELECTRIC HEAT ON COPCO'S WIRE-ON-TIME PLAN... MAKE BUDGET PAYMENTS AT LOW INTEREST RATES... ASK YOUR LEAGUE DEALER OR COPCO SERVICE OFFICE.

Heat-by-Wire (NOT FIRE)

M.J.B. COFFEE
One Pound 59¢ Two Pounds \$1.17

TREE TEA
100 Bag Package 99¢

TREE TEA
1/2-lb. Package 80¢

CHIFFON DINNER NAPKINS
Package of 65 2 for 49¢

ROYAL GELATINS
10 Flavors 10 pkgs. 69¢



Grocereria Will Be CLOSED THURSDAY Thanksgiving Day!

HOLIDAY SPECIALS!

STORE-WIDE BARGAINS AT THE NEW, REMODELED GROCERIA!
C&H Powdered or Brown

SUGAR 10¢ ea.
In One Pound Packages

We Hope You Have a Very Happy Thanksgiving

Grocereria
THE PLACE TO GO FOR THE BRANDS YOU KNOW

6th & Grape
STORE HOURS: Open every night until 9 P.M., seven days a week.

OUR NEW FROZEN FOOD CASES are loaded with lots of wonderful new frozen foods!

We Invite You to Shop So. Oregon's Largest and Finest Frozen Food Display

- | | |
|---|---------------|
| Haley's Minute Maid Orange Juice, 6-oz. can, Reg. 2/49c | 5 cans \$1.00 |
| Veal Steaks | 98c |
| — or — | |
| Buttered | 89c |
| Beef Steaks | 69c |
| (pkg. of 4) | 83c |
| REGULAR 79c | 39c |
| Welsh's Sheepherder Bread | 99c |
| Sara Lee Fresh Banana Cake | \$1.25 |
| South African Lobster Tails | 59c |
| Flav-R-Pac Flav-R-Talers, 2-lb. bag | 59c |

CRANBERRY SAUCE

OCEAN SPRAY
Jellied or Whole
No. 300 Can
Reg. 2 for 49c

19¢ can

Ocean Spray and... Sno Boy CRANBERRIES 2 35¢
Grown and Packed in Oregon — None Finer!

CRISP CRUNCHY CELERY Full Flavored... Top Grade
This is a graded shed pack celery. Several sizes to choose from—pick the size you need.

Arizona NEW CROP WHITE GRAPEFRUIT 8 lb. bag 59¢

LOCAL Sweet Spanish ONIONS 5¢ lb.

Jumbo Size Sweets & Yams 3 lbs. 25¢

Over 70 items to choose from... plus a full line of NUTS.

Swift's Premium FULLY COOKED PICNIC 39¢ lb.
5 to 6 lb. average

U.S.D.A. CHOICE ROUND STEAK 89¢ lb.
Cut Thick or Thin

U.S.D.A. CHOICE CHUCK ROAST 53¢ lb.
Round Bone 59¢ lb.

Grocereria's Lean GROUND BEEF 39¢ lb.
10-lb. pkg. \$3.75

Our Own Make! PURE PORK SAUSAGE 39¢ lb.

Fresh Pacific SMALL OYSTERS 69¢ Pint

ALSO... A LARGE SELECTION OF FRESH FROSTED BELTSVILLE TURKEYS

Long Island DUCKLINGS
Plump, Tender GEESE
6 to 8-lb. STUFFED TURKEYS

Libby Pumpkin No. 2 1/2 Can 5 cans \$1.00

Mince Meat S&W 28-oz. Jar 59c

Royal Prince Sweet Potatoes No. 303 Can 25c

Diamond A Corn Whole Kernel—No. 303 Can 5 for 95c

Diamond A Cut Beans No. 303 Can 5 for \$1.00

Nalley's Mince Meat 28-oz. Jar 39c

Nestle's Morsels 12-oz. Pkg. 39c

Aluminum Foil Kaiser, 18-inch Wide Roll 69c

Kraft Miniature Marshmallows 10 1/2-oz. Pkg. 25c

Bordo Pitted Dates One Pound Pkg. 49c

Del Monte Fruit Cocktail No. 303 Can 4 for 89c

Hunt's Fruit Cocktail No. 303 Cans 5 for \$1.00

Heinz Sweet Pickles 25-oz. Jar 49c

Spiced Pears Medford, 303 Can 5 cans \$1.00

Spiced Peaches Hunt's—No. 2 1/2 4 cans \$1.00

Frozen Pies Johnston Mince or Pumpkin 39c

Lucky Whip Topping 9 1/2-oz. Can 49c



Plump Tender SORAN'S OREGON GROWN TURKEYS

TOM TURKEYS Fresh Frosted 39¢ lb.
18 lbs. and Over

HEN TURKEYS Fresh Frosted 45¢ lb.
10-14 lbs.

TOM TURKEYS Fresh Dressed 45¢ lb.

HEN TURKEYS Fresh Dressed 53¢ lb.

Low Prices... PLUS 200 EXTRA THRIFTY GREEN STAMPS With Each Fresh Dressed Turkey!

WYANDOTTE OLIVES

LARGE RIPE OLIVES, Reg. 29c
SELECT PITTED OLIVES, Reg. 29c
LARGE RIPE PITTED OLIVES, Reg. 35c
CHOPPED OLIVES, 4 1/2-oz. can 2 for 27c
SLICED OLIVES, 2 1/4-oz. can 2 for 33c

Blue Plate—For Wonderful Oyster Dressing
COVE OYSTERS—8-oz. Can, Reg. 49c 39c

Pacific TINY OYSTERS—8-oz. Can 3 cans \$1

Pacific Cleaned Cocktail SHRIMP—No. 2 1/4 Can 43c

DRESSING BREAD
Plain 15-oz. 25c Spiced 15-oz. 28c
Loaf 28c

HOLSUM CUBED STUFFING
Just Add Liquid—Package Sufficient for 5-lb. Fowl 31c

GROCERIA BAKERY For Your Holiday Feast!

PARKER HOUSE ROLLS
BANQUET ROLLS
SESAME SEED ROLLS
POTATO ROLLS
BUTTER ROLLS
FRENCH ROLLS

Pumpkin Pies 59¢
Mince Meat Pies 69¢

Company Awarded Four Blue Ribbons

Yreka — Siskiyou Stone Inc., Yreka, won four blue ribbons in the Los Angeles county fair recently and one first place award in excellence in complete exhibit at the California state fair in Sacramento, according to W. D. Houston, president of the corporation.

Prizes won at the Los Angeles fair were for polished granite, building stone and cement products and polished marble.

All exhibits came from within a 38-mile radius of Yreka, Houston said. The processing plant, still under construction is located in Montague.

About \$300,000 has been spent in developing the plant and \$100,000 more will be spent before it is put into full operation, according to Houston. About 50 men will be employed to operate the plant and quarries.

The plant is expected to be in full operation in about six months. They are already producing rubble and cinders for building purposes.

There are approximately 100 stock holders in the company. There have been 5,000 shares sold, Mr. Houston said.

LOSE PRIVATE LINE Heidelberg, Germany — (AP) — Police jammed communications between an American soldier and his German girl friend Sunday. They confiscated a complete Army radio sending and receiving set from the girl's apartment. Another transmitter and receiver was smashed at Yreka. The soldier's clothing locker, Names of the two were not disclosed.

Astronauts Watch Escape Equipment On Missile Fail

Cape Canaveral—(AP)—American Mercury astronauts watched the escape equipment designed to protect their lives in space flight fail for the second straight time today as a Mercury-Redstone rocket malfunctioned on the launching pad.

There was no man inside the space capsule in today's test but all seven of the astronauts picked to ride into space sometime next year were on hand to watch the test.

Capsule Left Behind

A cluster of three rockets designed to jerk the one-ton space capsule free of the giant Redstone in event of major failure, such as an explosion, went off by mistake when the Redstone only failed to fire. The attachments apparently broke and the escape rockets straight out of sight, leaving the man-capsule behind.

The Redstone was supposed to boost the bell-shaped capsule more than 100 miles into space on a 220-mile flight over the Atlantic in today's test.

The flight, which would have lasted 16 minutes, was the first full-scale trial for the rocket and capsule combination that civilian space agency head T. Keith Glennan said would carry a U. S. astronaut into space sometime in January.

But today's mishap marked the second straight failure for the critical escape system, and may have set the Mercury program back even further.

Separation Failed

Earlier this month, a test of the buoy-shaped capsule and escape rocket from Wallop's Island, Va., fizzled at high altitude.

The emergency rocket was supposed to pull the capsule free of its booster rocket in today's test, but separation did not occur on schedule.

In today's test, the escape tower was wired so that, under normal circumstances, only the blockhouse could trigger the escape mechanism. Federal space agency officials and scientists were unable immediately to pinpoint what caused the emergency system to trigger automatically, ripping the tower which carried the escape rocket above the capsule free of its moorings and catapulting it several thousand feet over the cape.

Fell To Beach

The small rocket soared into low-hanging clouds and fell to the beach about 2,000 feet west of the launching pad. The seven astronauts were stationed at "strategic points" around the cape for the test today, the space agency said.

May Take a Month

One, Donald Slayton, was flying in an F106 jet 38,000 feet over the launching area to take pictures of the firing.

Backers of Democrat Maurice Neuberger spent \$98,208 compared to \$84,000 for Republican Richard Nixon. The Senate campaign of Republican Elmo Smith.

For Congress, campaign expense reports of Democrat Al Ullman and Republican RonPAIR in the 2nd district were not available today but in the other three Congressional contests, expenses were:

Durro Expenses Higher

1st — Republican Walter N or b i a d \$8,552; Democrat Mary Owens \$255.

3rd — Democrat Edith Green \$4,871 but incomplete; Republican Wallace Lee \$10,172.

4th — Republican Edwin Durro \$26,089; Democrat Charles Porter \$29,000.

For secretary of state, Republican Howell Appling Jr.'s supporters spent \$49,849 in his successful campaign.

The campaign to reelect Democrat Robert Y. Thornton as attorney general cost \$20,817 and \$10,000 in contributions for Sweetland came from organized labor.

The campaign to reelect Democrat Robert Y. Thornton as attorney general cost \$20,817 and \$10,000 in contributions for Sweetland came from organized labor.

Alaska Election Returns Continue To Be Received

Eastwood, England — (AP) — The Rev. Peter Capron told his congregation Sunday night that Dr. H. Lawrence's "Lady Chatterley's Lover" would make a good "guide on love and marriage" for young couples.

Eastwood, England — (AP) — The Rev. Peter Capron told his congregation Sunday night that Dr. H. Lawrence's "Lady Chatterley's Lover" would make a good "guide on love and marriage" for young couples.

Eastwood, England — (AP) — The Rev. Peter Capron told his congregation Sunday night that Dr. H. Lawrence's "Lady Chatterley's Lover" would make a good "guide on love and marriage" for young couples.

Alaska Election Returns Continue To Be Received

Approximately 10,555 square miles per precinct.

When results from St. Lawrence Island finally arrived late last week they included the first vote from the island's state primary. The island is located 48 miles from the Soviet Union in the Bering Sea.

Nixon carried the two precincts there by 75 votes.

In Aleutian Chain

Two of the four precincts that haven't come in yet are located in the Aleutian Island chain. Indians who live there may have been out fishing or hunting when the election was held. State officials may never find out where they were or if the vote was held.

In fact, there are precincts that haven't reported in to say whether or not elections were held.

Vice President Richard Nixon, who virtually won Alaska's three electoral votes Sunday when absentee ballots gave him a margin of more than 800 over president-elect John Kennedy, has the distinction of carrying the majority of the state's 300 precincts.

May Take a Month

Bush pilots, short wave radio, ship-to-shore telephone mailboats, and even Eskimo whale boats play a part in bringing in votes from an Alaskan election.

If the state's 300 precincts were spread out equally, each would cover more area than the state of Rhode Island, and Sunday.

Two sweet reasons for buying SPRECKELS SUGAR

SPRECKELS POWDERED SUGAR—finer, fluffier, blends faster to give you perfect frostings every time! Try the basic Quick 'n Easy Fluffy Frosting recipe on every Spreckels Powdered Sugar package.

SPRECKELS BROWN SUGAR—with that old-fashioned molasses flavor. Sprinkle it on hot cereals, use it in baking... sweet things happen when you cook with Spreckels Brown Sugar!

FOR YOUNG COUPLES

Eastwood, England — (AP) — The Rev. Peter Capron told his congregation Sunday night that Dr. H. Lawrence's "Lady Chatterley's Lover" would make a good "guide on love and marriage" for young couples.

Eastwood, England — (AP) — The Rev. Peter Capron told his congregation Sunday night that Dr. H. Lawrence's "Lady Chatterley's Lover" would make a good "guide on love and marriage" for young couples.

Eastwood, England — (AP) — The Rev. Peter Capron told his congregation Sunday night that Dr. H. Lawrence's "Lady Chatterley's Lover" would make a good "guide on love and marriage" for young couples.

Two sweet reasons for buying SPRECKELS SUGAR

SPRECKELS POWDERED SUGAR—finer, fluffier, blends faster to give you perfect frostings every time! Try the basic Quick 'n Easy Fluffy Frosting recipe on every Spreckels Powdered Sugar package.

SPRECKELS BROWN SUGAR—with that old-fashioned molasses flavor. Sprinkle it on hot cereals, use it in baking... sweet things happen when you cook with Spreckels Brown Sugar!

Bonus reason for buying Spreckels Sugar: You can't buy any better! It's no wonder... WESTERNERS ARE SWEET ON SPRECKELS SUGAR