

# Taxpayers Saved Money at County Shops

## Most Repair Work On Vehicles Done At Barnett Site

A crew of 21 men at the Jackson county roads department shop on Barnett rd. has an inventory of \$637,000 worth of equipment to keep county vehicles in running order.

This year-around job saves the county taxpayers at least 50 per cent in outside repair charges, County Engineer Robert J. Carstensen said. Mass buying of equipment and accessories provide further savings.

For instance, a broken shaft is brought in from a piece of road equipment. A machinist turns out a new shaft and this is stored away for future need. A big shaft costs \$500 and a smaller one from \$10 to \$20.

**War Surplus Equipment**  
Some of the lathes are war surplus equipment, Carstensen pointed out. No new equipment has been purchased for the machine shop for two years, he pointed out. This machine shop equipment totals \$26,256. Stock room parts and supplies total \$127,281.

Like any efficient operation using mobile equipment, maintenance starts with the operator or driver.

One man is kept continuously on one piece of equipment, Carstensen explained. It is his responsibility to see that it is kept in good working order. As soon as trouble is spotted it is either repaired on the job or taken immediately into the shop to cut down on lost time repairs.

**Radio Equipped**  
The mobile two-way radio operated from the shop office receives news of breakdown and routes and reroutes repair crews to the scene. One of the county court cars also has two-way radio which makes it possible for the county court secretary to telephone the roads shop with any urgent message.

The dispatcher in turn contacts the county court while members are out inspecting roads.

For miscellaneous county work, 71 miscellaneous trucks and 42 pickups are kept in readiness. Six station wagons, buses, cars and miscellaneous other rolling stock are used to transport county officials or workers.

**Other Equipment**  
Other equipment includes tractors, power shovels, air compressors, concrete mixers, graders and scrapers, rock crushing equipment, portable power plants, pumps, a pile driver, road oil equipment, trailers, rollers and loaders.

When maintaining county roads the motto is, "Hope for the best, but expect the worst." To this end, the county road fund budget always includes some money for snow removal. This year it is \$2,308.

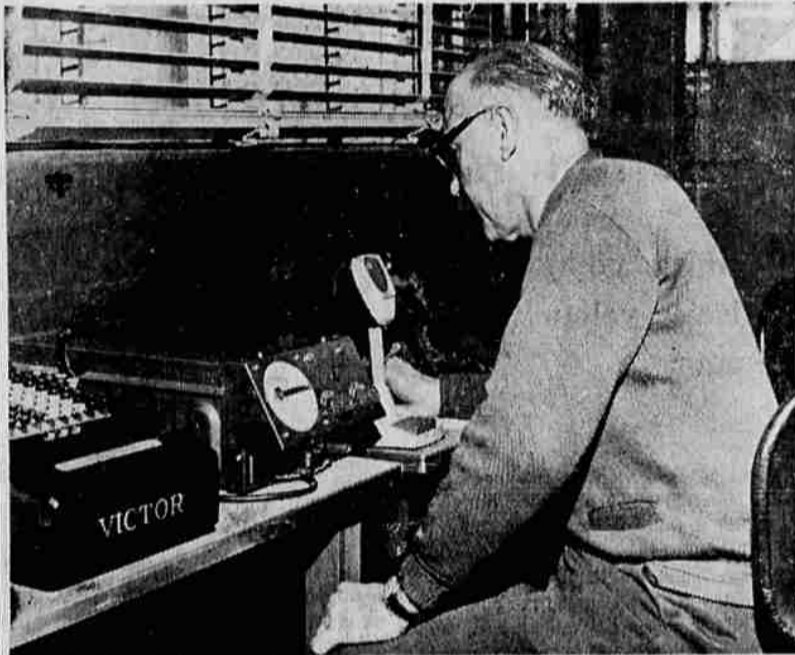
The county miscellaneous equipment inventory includes four snow plows valued at \$250 each. Much of the miscellaneous equipment includes power chain saws, tanks, and engines and pumps.

**Depreciation Noted**  
The county engineer figures every year the county roads department must depreciate about \$700,000 worth of equipment. Replacement rate is 10 per cent. On an average, \$96,000 worth of new equipment is purchased each year. This year it was \$53,067.38.

"We figure we must get at least 10 years out of each piece of equipment," Carstensen explained. "Some stuff won't last that long and other



**PARTS DEPARTMENT**—Checking out parts in the county machine shop for repair of equipment are "Slim" Cooper, equipment superintendent, left, and Henry Kantor, machinist, right. Jay Elherton, parts man, center, checks the order. Stock room parts and supplies total \$127,281.67, according to a report made by County Engineer Robert J. Carstensen for the fiscal year ending June 30.



**DISPATCHER** — Harold Tolle, bookkeeper at the county shops, contacts a county road crew by two-way radio. This radio network makes it possible for the county shops to keep in touch with road crews. Repair crews may be routed to a work location when equipment breaks down thus saving at the county shops, contacts a county road crew by two-way radio. The county shops office can also contact the county court by radio when receiving an urgent message from the court-house. One car operated by the county court has a two-way radio in it.

such things as points for a steam shovel are forged and beaten into sharp working points.

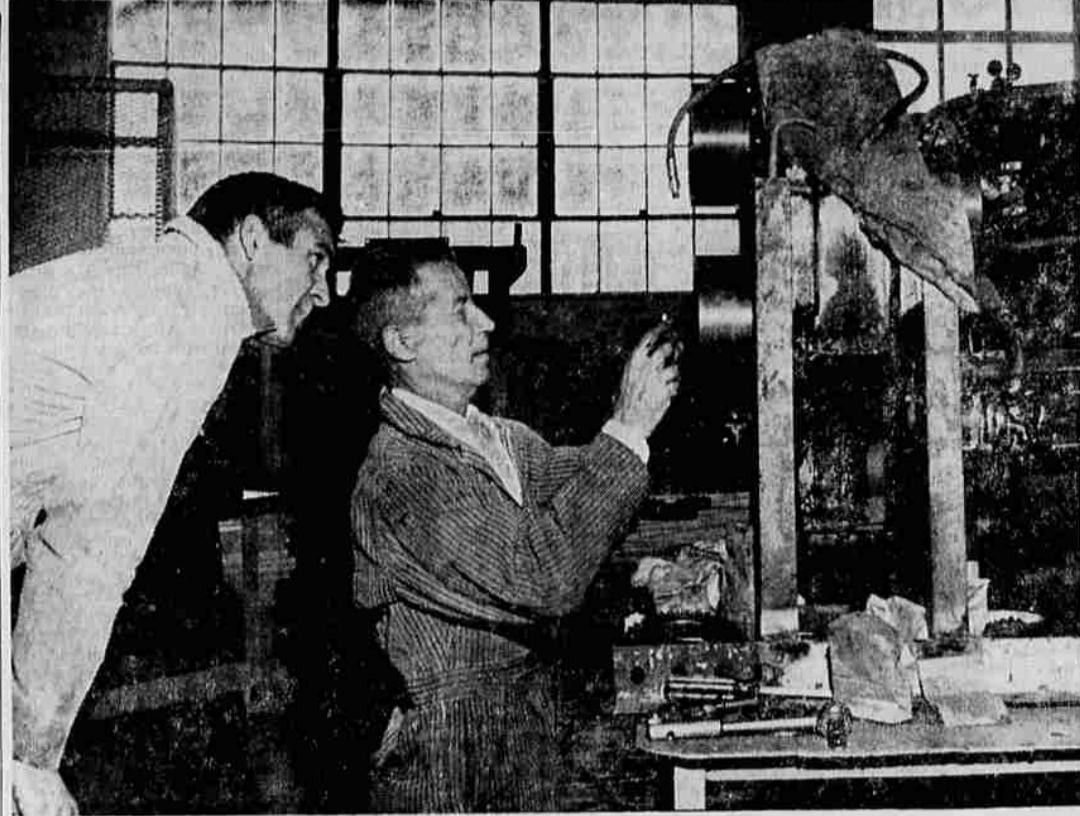
Repair work is just part of the county shops functions, however. Those finger-board signs which point out roads and the metal warning, caution and stop signs are made and repaired and repainted at the county shops. The county shops get the wood and metal blanks and do their own painting.

A large stockpile of such wood materials as bridge timbers is kept. Timbers are used and reused whenever possible.

Behind the machine shed, there are concrete sections for a bridge laid out in wooden forms. When ready the concrete sections will be transported to the site and quickly installed. This means a wooden bridge can be replaced in a day or two instead of weeks.

Of course, the shops on Barnett rd. do not represent the complete county repair plant. Garages are also located at Eagle Point, Jacksonville and Gold Hill, chiefly for housing equipment in those areas.

The county shop is probably one of the few departments in county government dedicated to saving the taxpayer's dollar.



**REPLACE CLUTCH**—Dale Baker looks on as Ed Pierce, shop foreman, puts in a new clutch in a transfer case from a grader. The shop is completely equipped for making brass bushings, reboring motors, turning brake drums and doing similar jobs. Machine shop equipment has a total value of \$26,256, according to a recent county engineer's report. The shops do some equipment repainting, but are careful to specify in bids that equipment have particularly durable paint jobs to make repainting unnecessary.

## Area Residents Warned Of 'Referral Selling'

Local residents have been warned by Don McNeil, Medford Chamber of Commerce manager, against the many "something-for-nothing" appeals especially used near Christmas.

One such scheme now in use is the "referral selling" approach. The prospect is told that he can get some article free, if he is willing to cooperate in a word-of-mouth advertising program. If he "qualifies" he will become a "buyer representative" or "word-of-mouth agent."

According to the National Better Business bureau, the salesman proceeds to give a long and convincing story about the advertising costs involved in the usual method of selling. He explains that if such costs can be eliminated by having one friend or neighbor recommend another, a substantial sum can be paid

prospects awfully fast, according to the BBB.

**Experience Demonstrates**  
The BBB points out that "experience has clearly demonstrated that in the vast majority of cases, participants are seldom, if ever, successful in getting enough 'referral' payments to meet . . . their obligation."

The trouble with endless chain merchandising schemes is that they are not endless." Finally, it should dawn on the prospect that he is going to have to meet the obligation himself, out of his own funds, the BBB said.

**JAILER JAILED**  
Colabato City, Philippines (UPI) — Thieves here looted city hall, the city jail and the police chief's office, released all the prisoners and jailed the jailer.

The analytical thinker can see that those papers "spell out" an obligation to pay. He can sense that any commission plan which involves geometrical progression runs out of

## One-Car Accident Reported to Police

A one-car accident occurred Friday afternoon at the intersection of Villas rd. and the Crater Lake highway, state police said Saturday.

No injuries were reported, although considerable damage occurred to the car.

The driver, Jerry William Worthington, 22, of 362 North Third st., Central Point, said he was driving north on the highway when a car pulled out in front of his at the Four Corners. He swerved to miss it, and landed in the ditch.

## Give Your Watch the Care It Deserves



Depend upon our experts for

## Watch Repairs

**John Nuuch JEWELERS**

231 East Main

**CHILD BRIDES**  
Washington — Girls of 12 may be legally married in six states of the United States.

## For the Finest in Food... Try Town House Chuck Wagon

Delicious Fried Chicken and a Variety of Salads and Meat Dishes

**Dinner \$1.50**

Served from 5:30 p.m. to 7:30 p.m.

**Lunch \$1.00**

Served from 11:15 to 1:30 p.m.

Across from Hotel Jackson • Closed Sundays

## Julie Tummers Announces The...

# Grand Opening

of Newly Remodeled & Redecorated

# MON DESIR

DINING INN • East of Central Point

# Thanksgiving

## DAY—THURSDAY, November 24

Dinner Served from 3 to 9 p.m. on This Day

A DOUBLE TREAT is in store for you and all the family when you come to Mon Desir this Thanksgiving Day for dinner. You'll see the results of our extensive remodeling program (we know you'll be delighted with it) and you will also enjoy a truly delectable Holiday Dinner, personally prepared by Julie for your dining pleasure. You'll like the way it is served, too, in Mon Desir's traditional festive manner, and especially will you be pleased with the friendly atmosphere and warm hospitality of this picturesque dining inn!



Phone for Reservations — Please  
Phone NOrmandy 4-2513



**TURNS CRANK SHAFT** — Derrald Sykes, new mechanic in the county shops, turns the crank shaft in a large engine so he can check the timing. Behind Sykes is a complete array of hand tools and small parts used in his work. Neatness and orderliness is emphasized in the shops for both safety and efficiency purposes. Equipment is carefully lined up outside the shops in the parking area when it is returned. Much of this winter's work is on routine overhauls to prepare it for intensive work next spring and summer.

## California Growers Facing Pear Blight

Davis, Calif. — (UPI) — California pear growers, who were forced to replant thousands of acres because of a disease called pear decline, face another possible blight to the pear crop.

Young trees on old home varieties rootstock, which is resistant to pear decline, may carry another disease — pear meales, according to the Inter-Agency California Pear Decline committee.

Meales produced no visible symptom for several years after planting but cuts pear production in mature trees from one-third to one-half. Because of its nature, growers may plant infected trees unknowingly.


said there was "at least a 50 per cent chance" that any young tree on old home roots or with old home as interstock carries meales.

To combat this, scientists are propagating, on a small scale, cuttings from apparently meales-free Old Home Stock. They are also developing Bartlett pear trees on Old Home Stock near Medford, Ore., which may serve as a source of meales-free Old Home Stock.

But these two plans will not help growers who must plant this winter. The committee said these growers should plant young trees on Domestic French rootstock, which is apparently free of decline and meales.

**Evangelistic Services**  
7:30 Nightly (Except Sat.)  
Nov. 20th through 27th

See and Hear



**Rev. Walter Markham**  
Evangelist, of Porterville, California

**MT. PITT CHURCH OF THE NAZARENE**  
Mt. Pitt & Chestnut • Public Invited

**RIVERVIEW CAFE**  
at Rogue River Bridge  
Highway No. 62 — Shady Cove  
Open daily, except Mondays — 7:30 a.m. to 1:00 p.m.

**Traditional Thanksgiving Dinner**  
NOVEMBER 24, 1960

**Five Course Dinner**  
Served from 1:00 o'clock

Choice of Entree—  
Dessert—Our homemade Pies...\$2.50  
Special Child's Plate .....\$1.00

Lucille Brumfield, Owner-Manager  
Phone TRinity 8-2681  
Shady Cove