

Five-Story Apartment Building Collapses in New York

Heroic Effort Saves Terrorized Elderly Woman

New York (UPI)—Workers aided by a giant crane today dug through the wreckage of a five-story apartment building that collapsed with a roar into a huge excavation on Manhattan's East Side.

Police said that all nine residents of the building at 34th st. and Lexington ave. in the shadow of the Empire State Building either managed to get out before the collapse or were not at home when the structure toppled shortly before midnight Thursday. One aged woman was saved by a heroic bartender.

Police said the foundation of the building that disintegrated apparently had been weakened by excavation in the area. The 25-foot deep hole next door had been scooped out for construction of a new apartment building.

Bartender Joe Granah, 29, who was sitting in a nearby bar, said he felt a tremor like an earthquake when the building began to come apart.

"I ran out and saw the building shaking," he said. As dust spurted from the sides of the building, Granah ran to the front door, found it jammed, and kicked it open. He dashed up the stairs to the fourth floor where he found an 83-year-old widow carried her down the stairs and reached the street just as the building fell in a shower of flying brick, glass and wood.

Stock Market Firms; Specials Score Gains

New York (UPI)—The stock market firmed by a narrow margin today with chemicals, electronics and scattered specials scoring the better gains.

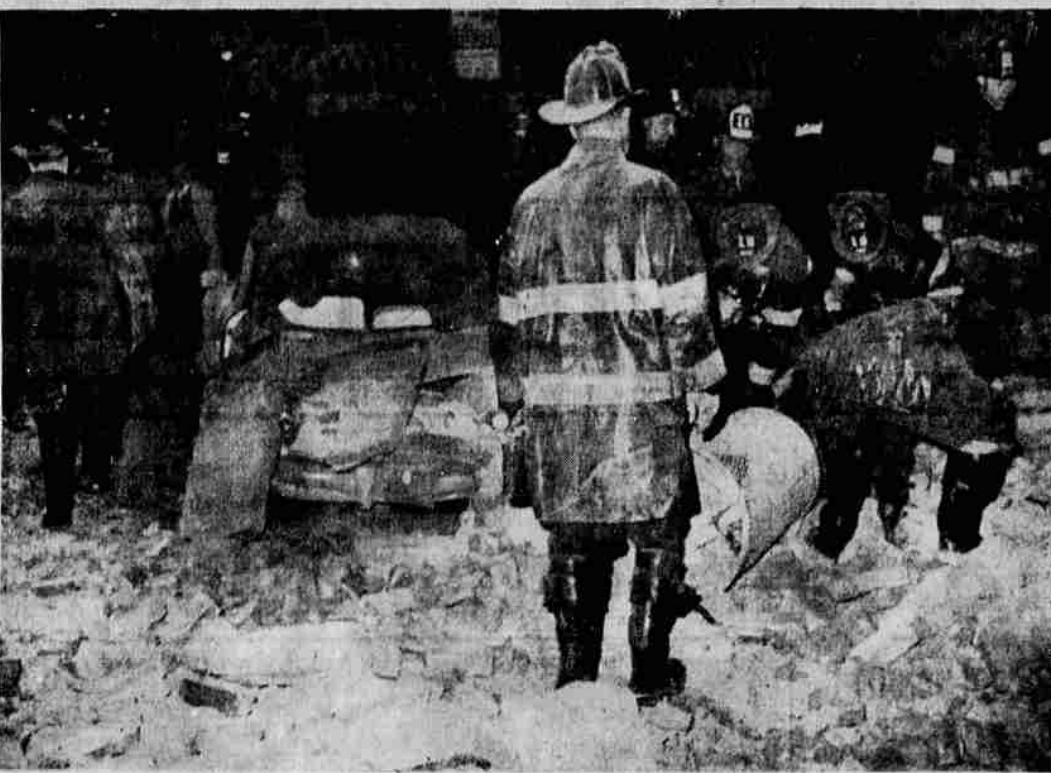
Gains of a point in Du Pont and small fractions in General Electric, Westinghouse, Jersey Standard and Allied Chemical enabled the industrial average to show a gain of slightly more than a point during the first hour.

DOW-JONES AVERAGES
New York (UPI)—Dow-Jones final stock averages: 30 industrials 602.18, off 2.59; 20 railroads 128.39, unchanged; 15 utilities 83.84, off 0.26; and 85 stocks 189.53, off 0.63.

Sales Thursday were about 2.45 million shares compared with 3.11 million shares Wednesday.

Thursday's prices on selected stocks	
Allied Chemical	52 1/2
Alum. Co. Am.	35 1/2
American Can	35 1/2
American Motors	19 1/2
A. T. & T.	42 1/2
Anacosta Copper	42 1/2
Armco Steel	63 1/2
Bendix Corp.	37 1/2
Bethlehem Steel	37 1/2
Boeing Air	34 1/2
Caterpillar Corp.	38 1/2
Chrysler Corp.	43 1/2
Continental Can	33 1/2
Crown Zellerbach	48 1/2
Curtis Wright	16 1/2
Dow Chemical	78 1/2
Du Pont	61 1/2
Eastman Kodak	108 1/2
Firestone	37 1/2
General Electric	72 1/2
General Foods	62 1/2
General Motors	41 1/2
Graham Paige	41 1/2
Greyhound	20 1/2
Gulf Oil	29 1/2
Homestead Mining	45 1/2
Idaho Power	45 1/2
I.B.M.	84 1/2
Int. Paper	96 1/2
Johns Manville	54 1/2
Kennecott Copper	76 1/2
Lockheed Aircraft	28 1/2
Montana Power	28 1/2
Montgomery Ward	28 1/2
Nat'l. Biscuit	28 1/2
New York Central	15 1/2
Pac Gas & Elec	42 1/2
Penn. J. C.	43 1/2
Penn. RR	10 1/2
Radio Corporation	52 1/2
Richfield Oil	86 1/2
Safeway	36 1/2
Sears	36 1/2
Shell Oil	41 1/2
Socony Mobil Oil	38 1/2
Southern Co.	42 1/2
Southern Pacific	20 1/2
Standard California	41 1/2
Standard Indiana	41 1/2
Standard N. J.	40 1/2
Sun Mines	76 1/2
Texas Co.	17 1/2
Texas Gulf Sulfur	17 1/2
Texas Pac. Land Trust	16 1/2
Transamerica	24 1/2
Trans World Air	12 1/2
Tri-Continental	38 1/2
Union Carbide	12 1/2
Union Pacific	22 1/2
United Aircraft	32 1/2
United Air Lines	44 1/2
U. S. Rubber	44 1/2
U. S. Steel	74 1/2

BUD'S TIRE EXCHANGE
1/2 Price Sale Continues!
Buy 1st Retread at Regular Price
GET 2ND ONE AT 1/2 PRICE
Ask Your Favorite Service Station



BUILDING COLLAPSES—A partly crushed car stands in the background while firemen search through the rubble of a five-story residential building collapsed in New York late Thursday. (UPI Telephoto)

Khrushchev Said To Have New Formula for Summit

Elimination of Disarmament Issue Reported

London (UPI)—An Iron Curtain diplomat reported today that Soviet Premier Nikita S. Khrushchev has a new summit formula which would eliminate the disarmament issue from the next meeting of the Big Four.

The source said Khrushchev has in mind a "two-tier" strategy which would call for a meeting of the United States, Britain, France and Russia to discuss the Berlin issue and the problem of Germany in general.

A much wider meeting, including neutrals and the new nations that are emerging, to negotiate on global disarmament.

Behind the strategy lies Khrushchev's apparent unwillingness to limit disarmament talks to the Big Four powers. It also is considered a conciliatory gesture toward Red China.

Ashland Couple To Attend Convention

Ashland—Mr. and Mrs. Robert Lytle, Ashland, plan to attend the National Farm Bureau convention in Denver, Colo., Dec. 10 through 14. Lytle is president of the Jackson County Farm Bureau.

Herter Orders Restraint in Contact With Kennedy Group

Washington (UPI)—Secretary of State Christian A. Herter has ordered State Department officials to refrain from establishing individual contacts with the incoming administration of President-elect John F. Kennedy.

County Home Rule Charters Should Be In General Terms

(Continued from Page 1) The Santa Clara county official said the California constitution was amended in 1911 to provide for home rule. Eleven of 58 California counties adopted charters. Some of the 11 counties which have charters had to try twice at the polls before they were enacted. Santa Clara county, at the south end of San Francisco bay, was the last county to successfully adopt a charter and has had 10 years experience with it.

Siegel noted that once a charter is enacted it is hard to amend. In California, charters presented as parts of general reform programs were usually successful.

County charters should be written in broad terms, he said. Setting forth detailed government operation under charter tends to freeze county government in an obsolete mould, Siegel indicated.

3 minutes reading this new booklet

all about CONTACT LENSES and you!
can FREE you forever from wearing glasses!
This booklet gives you the answers to all of your questions about Contact Lenses in a brief, easy-to-understand manner. No obligation—no purchase required. Come in to any of our ten conveniently located offices in Oregon and pick up your copy while they are still available.
our 55th year
COLUMBIAN OPTICAL CO.
MEDFORD SHOPPING CENTER
Phone SP 2-9990
casual shopping with convenient parking
EASTPORT, GATEWAY, LLOYD'S, OSWEGO, EUGENE, KLAMATH FALLS, MEDFORD, PENDLETON, SEARS ROEBUCK AND CO.
*Dr. Noles, Alexander, Brewer, Anderson, Leitzel, Hudson, Halquist, Crowell, Hermann, Peters, Siddons, Keir, and Berman.

White City Man Is Arraigned in Court

Martin Dave Wilkinson, 60, of the Veterans Administration domiciliary, White City, was arraigned in district court Wednesday afternoon on a charge of assault with a dangerous weapon.

He waived the right to an attorney and Judge Roy B. Shaw set a preliminary hearing for Nov. 21 at 2 p.m. Bail was set at \$5,000 and Wilkinson was lodged in the county jail.

Wilkinson was arrested by Oregon state police Nov. 14. The complaint charges that he assaulted Forrest Conrad Armstrong by hitting him on the head and face with a wine bottle.

PLANS LAUNCHING SITE
Washington (UPI)—The National Aeronautics and Space Administration has announced creation of a "test support office" at the Pacific missile range where it plans to launch advanced weather satellites and other spacecraft.

Castro Angrily Charges America With Intervention

By United Press International
Cuban Premier Fidel Castro's propaganda machine charged angrily today that U.S. assignment of warships to guard Guatemala and Nicaragua against Communist invasion was "Yankee intervention" in the Caribbean.

The naval peace patrol was welcomed by the two central American nations, threatened this week by uprisings which their governments said were fostered by the Castro regime, but Cuba's official press and radio said there was no threat of invasion.

Radio announcers on Castro's government stations charged that President Eisenhower, by posting an invasion guard on the eastern approaches to Guatemala and Nicaragua, was "trying to crush the fight for freedom going on in those countries."

From Moscow, the Soviet Union's Tass news agency charged the U.S. action was "one more link in the provocative policy of the U.S. ruling circles against Cuba."

It claimed an attack on Cuba was being prepared at bases in Guatemala and Nicaragua. The last major rebel resistance in Guatemala and Nicaragua was crushed Wednesday, when loyal Guatemalan troops recaptured the Caribbean-coast city of Puerto Barrios and chased the surviving insurgents toward Honduras.

Guatemala President Miguel Ydigoras Fuentes said the situation in the revolt area northeast of Guatemala City resembled a "foxhunt," with warplanes and special infantry units tracking down the survivors.

Castro Angrily Charges America With Intervention

By United Press International
Cuban Premier Fidel Castro's propaganda machine charged angrily today that U.S. assignment of warships to guard Guatemala and Nicaragua against Communist invasion was "Yankee intervention" in the Caribbean.

The naval peace patrol was welcomed by the two central American nations, threatened this week by uprisings which their governments said were fostered by the Castro regime, but Cuba's official press and radio said there was no threat of invasion.

Radio announcers on Castro's government stations charged that President Eisenhower, by posting an invasion guard on the eastern approaches to Guatemala and Nicaragua, was "trying to crush the fight for freedom going on in those countries."

From Moscow, the Soviet Union's Tass news agency charged the U.S. action was "one more link in the provocative policy of the U.S. ruling circles against Cuba."

It claimed an attack on Cuba was being prepared at bases in Guatemala and Nicaragua. The last major rebel resistance in Guatemala and Nicaragua was crushed Wednesday, when loyal Guatemalan troops recaptured the Caribbean-coast city of Puerto Barrios and chased the surviving insurgents toward Honduras.

Guatemala President Miguel Ydigoras Fuentes said the situation in the revolt area northeast of Guatemala City resembled a "foxhunt," with warplanes and special infantry units tracking down the survivors.

LaPointe's

IT'S A WONDERFUL STORE

Saturday Check List OF GOOD VALUES

Wool jersey dresses
Only \$15.95 . . . nationally \$17.95. Softly draped neckline with gathered detailing and new torso bodice. 3/4 sleeves with button trim. Fully lined skirt. Very new. Very smart. In high shades of amethyst, turquoise or white.

Nylon jersey dresses
Only \$10.98 . . . nationally \$12.98. Your all time favorite dress for casual wear and travel. Many new styles. Short or 3/4 length sleeves. Step in shirtwaist style in different prints and new color combinations. Washable. Drip dry. No ironing.

Striped cotton shirtwaist dresses
Only \$12.98 . . . regularly \$15.95. An early arrival of soft casual dresses. Smartly tailored striped cotton top with button front. Roll up sleeves. Softly pleated solid color skirt. Self belt. A lovely dress. Just right for the hostess on Thanksgiving. New lilac, gold or soft green.

Baby dolls
Only \$3.98 . . . regularly \$4.98. Newly arrived baby dolls in nylon, highlighted with rich lace panels. Pretty scoop neckline. Sleeve and hem edges traced with dainty lace.

Slips
Only \$3.29 . . . Should be much more. Lovely full length nylon slips. Applied medallion at bodice enhanced with Schiffler embroidery in floral effect. Matching medallion at hem.

Robes
Only \$7.98 . . . nationally \$8.98. Cotton quilt robes in small floral print. Raglan elbow length sleeves, turn back lace cuff. Small choir boy collar trimmed with lace. Especially attractive. So warm for these colder mornings.

Luxury coats
Only \$36.00 . . . made to sell for \$49.95 and \$59.95. Adaptations of the finest French and Italian designers, fashioned in superb domestic and imported fabrics by master craftsmen. It's worth a trip to shop LaPointe's.

Mink trimmed coats
Only \$59, \$69, and \$89 . . . beautiful natural mink collars, luxurious fabrics, newest styling. Now is the time, it's worth a trip to shop LaPointe's.

Cashmere coats
Only \$48.00 . . . compare at \$79.95. Downy soft imported cashmere. Styles of real elegance. Hand detailed throughout. Beige, Bamboo or Black. It's worth a trip to shop LaPointe's.

LaPointe's
IT'S A WONDERFUL STORE

"My Casualmaker takes care of itself"
in jersey of 100% DuPont nylon
Guaranteed washable—drip dry—and NO IRON!
It's new! It's smart... expertly tailored shirtwaist favorite... styled to flatter you. From graceful notched shawl collar to generously flared softly pleated skirt. You'll fall in love with your Casualmaker at first wearing. In packable... always ready 100% nylon that machine washes... machine or drip dries... and never needs ironing! Pellon lined collar and cuffs... retain shape washing after washing. In attractive, exclusive Sy Frankl Royal bud print—Colors: Blue, Green, Brown—Size 12 to 20; 12 1/2 to 22 1/2—Come in, write or phone.
\$12.98

THANKSGIVING DAY GREETINGS CARDS
at Swem's
217 East Main