

Pappy Boyington Says Book Held Until Election

Dallas, Tex. — (AP) — Gregory (Pappy) Boyington, the World War II Marine flying ace, has accused the State Department of putting a lid on circulation of his new book until after the presidential election because of the Quemo-Matau Island issue.

He also charged that Generalissimo Chiang Kai-shek and Madame Chiang have turned the offshore islands "into a trap to lure us onto the Chinese mainland to fight their fight for them."

Boyington authored the best seller "Baa, Baa Blacksheep" and said his second book "Tomy" was on its way to becoming a best-seller when the State Department stepped in.

He said it sold 18,000 copies in its first six weeks.

"Then the State Department asked the publishers not to refill any orders until after the national election because of the vital issue about Matsu and Quemoy," Publishers everywhere are weak sisters, guess," Boyington said.

"They bowed to the wishes of the State Department."

He said his book is a "slightly fictionalized" story of China in 1940 and the Flying Tigers with which he flew.

"We're recognizing a fictional country," he said, "when the United States recognizes Nationalist China with less than a million people and ignores Red China on the mainland with its 700 million."

He openly charged that Chiang helped sell the Japanese fuel during the Chinese-Japanese war, and then sold "the Communists munitions as the Red threat was looming against her own government."

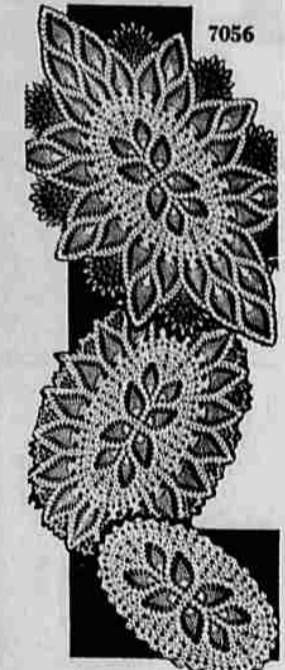
He said that Nationalist China has more lobbyists working in their behalf in Washington, D.C., than the largest of foreign nations have.

Smithsonian Gets First Reentry Cone

Washington (Science Service) — The first reentry nose cone, recovered after a space flight of more than 6,325 miles, has been presented to the Smithsonian Institution here by the U. S. Air Force.

Known as the RVX 1-5, the cone was subjected to air friction heat of more than 11,700 degrees Fahrenheit when it reentered the atmosphere after traveling over the South Atlantic at a speed of more than 15,000 miles an hour. The nose cone weighed about 700 pounds equipped and ready for flight.

Hostess' Pride



by Alice Brooks

It's a pleasure to crochet—a delight to display this trio in the popular pineapple design.

Lacy oval for a luncheon set or incidental dollies. Pattern 7056, directions large dolly 20 x 30, medium 15 x 20, small 8 x 13 inches, No. 30 cotton.

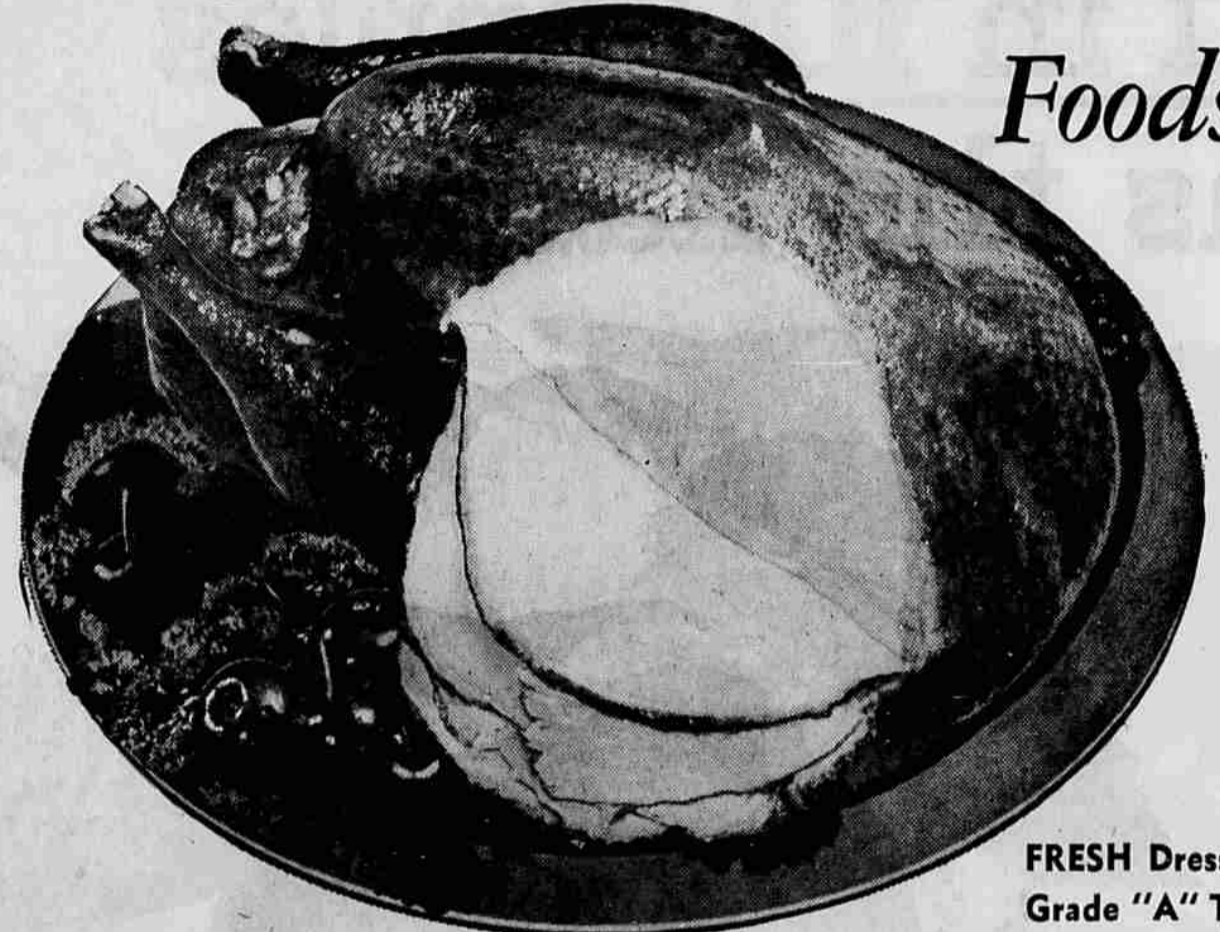
Send Thirty-five cents (coins) for this pattern—add 10 cents for each pattern for 1st-class mailing. Send to Medford Mail Tribune, Household Arts Dept., P. O. Box 168, Old Chelsea Station, New York 11, N.Y. Print plainly NAME, ADDRESS, PATTERN NUMBER.

JUST OUT Our 1961 Needlecraft Book. Over 125 designs for home furnishings, for fashions—knit, crochet, embroider, weave, sew, quilt, toys, gifts, bazaar items. FREE—six designs for popular veil caps. Quick—send 25c TODAY.

Pre-Thanksgiving



Foods for holiday needs!



Turkey

PLUMP, U.S. GRADE "A", 1960 YOUNG BIRDS

Broad-breasted, oven-ready, tender Hens and Toms. Flash-frozen to protect and preserve delicate flavor and superb quality. Every turkey carries our famed money-back guarantee of complete satisfaction.

8 to 16 lbs. **49^c** 17 lbs. & over **45^c** lb.

FRESH Dressed and Drawn Grade "A" Turkeys Available on Order

More Holiday Feast Favorites

- Beltville TURKEYS** lb. **59^c**
Young Grade "A", 4-7 lbs. flash-frozen roaster turkeys
 - Long Island DUCKLINGS** lb. **55^c**
Flash-frozen, oven-ready. Small-family favorite — 4-4½ lbs.
 - Fresh Pacific OYSTERS** 12 oz. jar **59^c**
Medium-size. Oyster stuffing is always a delicious treat
- We also offer Manor House Frozen 4-6 lb. Roasting Chickens and Frozen 6-10 lb. geese. Available on your order.

C & H POWDERED or BROWN SUGAR

Pure Cane Sugar from Hawaii. America's favorite for holiday baking. A regular 2/31c value. Limit 2, please.

1-lb. pkg. **10^c**

The Best in Coffees

- EDWARDS COFFEE**
Rich, robust vacuum pack. Just the best coffee money can buy — that's all!
- 1-lb. tin **57^c** 2-lb. tin **\$1 13**
- HILLS BROS. COFFEE**
Richer, stronger, a pound lasts longer. For flavor perfection, head for the Hills!
- 1-lb. tin **59^c** 2-lb. tin **\$1 17**

Canterbury Tea

- Orange Pekoe 48 bag **58c**
- COTTAGE CHEESE**
LUCERNE—prize-winning quality & flavor. Creamy large curd, farmer-style small curd, chive, low calorie or fruit topped.
- Pint **25^c** Quart **49^c**
- 4-lb. Plastic **98c**

- Mincemeat** NALLY'S. Fine quality at a thrifty price. For perfect mince pies. 28-oz. jar **49^c**
- Pumpkin** LIBBY'S. fancy quality. What is Thanksgiving without pumpkin pie? 2½ can **21^c**
- Pumpkin Pie** or MINCE. Best air premium quality. 24 oz. frozen pies. 8 inch pie **39^c**
- Large 'AA' Eggs** Cream of the Crop. Ranch-fresh. Doz. **59^c**
- Egg Nog** LUCERNE. rich, non-alcoholic. Finest quality money can buy. Kids love this nourishing drink. Qt. **59^c**
- Aluminum Foil** Reynolds, heavy duty. 18 inches wide. Turkey cooks tender and moist in Reynolds foil. 25-ft. roll **69^c**

- Marshmallow Grome** Kraft. Perfect with yams, 7-oz. jar **29c**
- Easy-Off Oven Cleaner** Cleans ovens quickly, easily. pt. jar **98c**
- Mrs. Gubbison's Stuffing Mix** Diced and Seasoned. 7½-oz. pkg. **29c**
- Stuffing Bread** Mrs. Wright's unseasoned. 1-oz. loaf **31c**

Prices in this advertisement are effective through November 20, at Safeway in Medford. We reserve the right to limit. No sales to dealers.



Sale at Safeway!



Foods for the week end, too!

This week, homemakers are faced with the dual problem of buying ahead for the Thanksgiving feast and planning delicious meals for the week end ahead! This is why we bring you this timely Pre-Thanksgiving Sale which features foods to meet both needs. Shop ahead at Safeway for good things for the holiday... and take advantage of the bargains in food you'll need this week end, too.

- Margarine** SUNNYBANK. Finest quality, greater savings. 5 1-lb. pkg. **\$1**
- Detergent** WHITE MAGIC. Finest quality. Why pay 87c? 49½-oz. pkg. **69^c**
- Napkins** Zee Dinner size. Large paper napkins in white, only. 2 pkg. of 70 **39^c**
- Cookies** Busy Baker Oatmeal, Sugar or Coconut. Mix 'em or match 'em. 3 1-lb. pkgs. **\$1**
- Cereals** Kellogg's Pop. 10-oz. Pops. Grape-Nuts, 10½ oz. or Post Toasties, 12 oz. Your choice. 4 pkgs. **\$1**
- Flour** KITCHEN CRAFT. Finest Quality enriched flour. 25-lb. bag **\$1 88** 10-lb. bag **88^c**

HEINZ KETCHUP

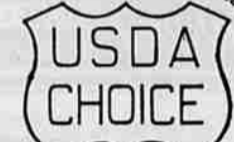
America's flavor favorite. Famous for years for its fine quality. Perks up the flavor of your meat dishes.

BIG-FAMILY SIZE 20-oz. Bottle **29^c**

Highway Galsup Big-Family Size 20-oz. **25c**

- Sweet Dinner Wines**
- Burgundy** or Chablis wine. Almaden fine. 5th **\$1.19**
- Haut Sauterne** Another favorite from Almaden vineyards. 5th **\$1.19**
- Thunderbird** 5th **79c**
- Vino Paisano** Red California wine from the Gallo vineyards. 5th **69c**
- More Holiday Favorites**
- Cheese Dips** Nalley's garlic, onion, clam or blue cheese. 8-oz. ctin. **49c**
- Lucky Whip** Vanilla topping in pressurized can. 9½-oz. tin **53c**
- Blanched Peanuts** Circus brand salted nuts. 13-oz. can **69c**
- Orange Marmalade** Old-Fashioned glass 4 10-oz. glass **\$1**

Remember... GOLD BOND GIFTS are YOURS faster because it takes less books!



Beef Pot Roast lb **49^c**

Patiently aged to eating perfection. Expertly cut to give you a maximum of good-eating meat. Carefully trimmed of all excess bone, fat and waste before weighing. BLADE CUTS 49c lb.

- FRESH FRYERS** Plump, whole chickens. Completely dressed and drawn. Weight range 2 to 3 lbs. lb. **35^c**
- CUT-UP FRYERS** Fresh young frying chickens disjointed, ready for your frying pan. 2-3 lbs. lb. **39^c**

FRESH FRYER PARTS

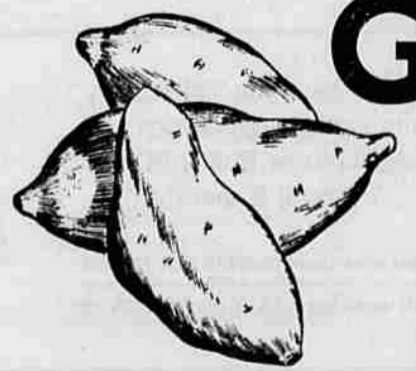
Chicken Breasts	Thighs and Drumsticks	Chicken Wings	Backs and Necks
lb. 69c	lb. 69c	lb. 29c	lb. 19c

Caramel-Apple Breakfast Rolls
Curry special of the week. reg. 49c pkg. **45c**

Mrs. Wright's Fresh Doughnuts
Oven-fresh cake doughnuts. **29c**

Season's Finest Fruits and Vegetables for Your Feast!

- Cauliflower** Snowy white compact heads. lb. **13c**
- No. 1 Potatoes** Northwest Russets. 10-lb. bag **79c**
- Fancy Nuts** Walnut, almonds, Filberts, Brazils. lb. **49c**
- Emperor Grapes** No. 1 quality. 2 lbs. **29c**
- Red Rome Apples** Extra fancy. lb. **19c**



GOLDEN YAMS

Famous Gold Rush variety. No. 1 quality, sugar sweet, excellent flavor. Serve 'em piping hot with plenty of butter. Your satisfaction guaranteed by Safeway.

lb. **10^c**

- Crisp Pascal Celery** Finest quality Long shanks. lb. **10^c**
- Cranberries** OCEAN SPRAY Grown and packed in Oregon. 1-lb. pkg. **19^c**
- Yellow Boiler Onions** Excellent quality for creaming. 5 lb. bag **29^c**
- Texas Pink Grapefruit** Thin skin 36 size. 4 for **49^c**

Every Second Bonus in Life of Bremerton Man

Bremerton, Wash. — (AP) — Every tick of the clock adds a bonus second to the life of Joseph Mayerle, 39, tavern manager.

This life bonus now totals more than 18 months for Mayerle, a World War II veteran who was told he had incurable lung cancer in April, 1959.

Doctors have yet to determine how the cancer disappeared, and Mayerle doesn't know either. He is certain only that he has never felt better, and his last x-ray Nov. 8 showed not a trace of the disease.

In Fine Health

"On my last check-up at the Veterans' hospital, they told me I was in fine health," Mayerle said.

He said he works about 15 hours a day at the tavern he manages. Mayerle has only a few hours each day and Sundays to enjoy his 13-month-old son, the child he never would have seen if his cancer seriously disappointing.

Mayerle discovered he had cancer in the early spring of 1959. He hadn't been feeling well, his appetite was poor and he was losing weight.

Water Drained

"I thought I had a very bad cold when I checked into the hospital," he explained. "At first the doctors thought I had pneumonia and they drained considerable water off my lungs. Then they determined it was cancer and operated. They found the cancer had progressed too far to be corrected by surgery and sent me home to die."

But instead of dying, Mayerle was determined he would live to see the baby. He decided he would live as normally as possible, and he ate whatever he chose and as much as he wanted.

Inclined To Give Up

"Cancer patients who are told they don't have long to live are inclined to give up. They lose their appetite, don't eat properly and go from bad to worse," he said.

Mayerle still hopes doctors will find something in his case which may prove a breakthrough in curing cancer for others. At any rate, Mayerle's only advice to cancer patients: "Keep eating."

NEGRO SINGER DIES

New Rochelle, N.Y. — Negro soprano Ellabelle Davis, 53, who sang in recitals and with major orchestras in the United States, Europe and South America, died Tuesday.

Santa, Look Here!

Doll Wardrobe

9063 FOR DOLL by Marion Martini

Doll dress-ups to match little mom's wardrobe bring the biggest thrill on Christmas. Two dresses, shirt, pedal pushers, hat, play outfit, jama, swim set, petticoat—all sew-simple!

Printed Pattern 9063: For dolls 14, 16, 18, 20, 22 inches. Yardages in pattern. State size.

Send FIFTY CENTS (coins) for this pattern—add 10 cents for each pattern for first-class mailing. Send to Marian Martini, Medford Mail Tribune, Pattern Dept., 232 1/2 18th St., New York 11, N.Y. Print plainly NAME, ADDRESS with SIZE and STYLE NUMBER.

New! Send now for our 1960 Fall and Winter Pattern Catalog—every page in exciting color! Over 100 styles for all sizes, all occasions plus school... 35c.