

Grange News

Lake Creek Grange Lake Creek Grange is sponsoring a community dinner Thanksgiving Day, Nov. 24. Everyone in the area is invited to attend. Those attending are asked to bring their own meal and table service. It has been a tradition to have this family day, but had been dropped for the last few years. The dinner hour is 12:30 p.m.

Election of officers for 1961 was held. Elected were master, Merton Bradshaw; overseer, Leland Charley; lecturer, Betty Bradshaw; steward, Glenn Burg; assistant steward, Murray Bartling; chaplain, Faye George; treasurer, Claus Charley; secretary, E. Lynn Charley; and trustees, Ernest Hostutler, lady steward, Pearl Bartling, Ceres, Otis Burrell; Pomona, Faye Burrell; Flora, Bessie Arens; executive committee members, Ernest Burrell, Carl Riblett, and Bob Gilkey.

Murray Bartling, fire insurance agent, reported on the annual insurance meeting that he attended. He reported on the proposed method of selecting the insurance agent.

E. Lynn Charley read an article by Secretary of Labor James P. Mitchell, entitled "The Value of an Education." The article stated that the estimated value of a high school education is \$64,000, and that of a college education at \$100,000, during a lifetime.

Faye Burrell, ways and means committee, reported a successful Halloween dance. Before the opening of Grange, films were shown through the courtesy of Texaco, Inc. The films were "Your County Agent" and "Grooming a Calf for 4-H." R. A. Hale, zone manager for Texaco, was instrumental in securing the films and prizes. Murray Bartling and Glenn Burg were in charge of the showing of the film.

Next Grange meeting will be the Christmas program Dec. 9 at 8:30 p.m.

Roxy Ann Grange State Grange Lecturer Victor Croxon spoke to the members and guests present at the open house at Roxy Ann Grange recently. Musical numbers and a skit made up the rest of the program.

Master Cecil Kee from Shady Cove and 12 members from Bellevue were guests for part of the meeting Nov. 4. The main business of the evening was election of officers for 1961.

The lecturer's program planned Nov. 18 will be presented by the agricultural committee. They have asked a member of the Jackson County Extension office to speak.

Non-Residents Lose Deductions on Vote

Salem—(AP)—One provision of the Oregon tax measure defeated by the voters in last week's general election would have allowed non-residents who work in Oregon to declare more deductions.

The provision would have been of greatest benefit to Washington residents, many of whom work in the Portland area.

The proposal would have permitted them to use Oregon's optional standard deduction.

At present, non-residents who work in Oregon can declare only items related to their production in Oregon, as union dues and contributions. Such things as a Washington state auto license are not deductible in Oregon.

Mainly the bill was designed to raise another \$12 million in state revenue. The 1959 legislature approved the bill because it was thought at the time Oregon would be in the red this biennium. Instead, Oregon will have a healthy surplus. The bill was defeated by more than 435,000 votes.

Maupin Rancher Heads Weed Group

Salem—(AP)—A Maupin rancher, Raymond Crabtree, was elected president of the Oregon Weed Conference at close of the group's 9th annual meeting here Wednesday.

George Kitzmiller of Pacific Coop in Portland was elected vice president. New directors are Louis Olson of Madras and Keith Sime, Portland.

Elected were Rex Warren, Corvallis, secretary; Ray Welso, Salem, treasurer; and directors Kent Peterson of Junction City and Earl Meeker of The Dalles.

Seoul, Korea—(AP)—United Nations Commander in Chief Gen. Curtis E. LeMay leaves today for Washington to attend the Army commanders' conference.



REMODELED FOR

Come, see all that's new in our store! Help us celebrate by

YOU'LL EAT BETTER—SAVE MORE—BY SHOPPING HERE FOR THANKSGIVING

C&H Powdered or Brown
SUGAR
In One Pound Packages **10¢ ea.**

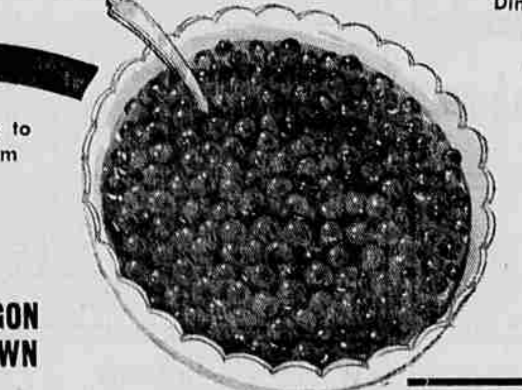
Spry Shortening 3-Lb. Can **69¢**

Imperial Margarine lb. pkg. **39¢**

GROCERIA BAKERY
for your holiday feast!

- PARKER HOUSE ROLLS
- BANQUET ROLLS
- SESAME SEED ROLLS
- POTATO ROLLS
- BUTTER ROLLS
- FRENCH ROLLS

Pumpkin Pies **59¢**
Mince Meat Pies **69¢**



FRESH OREGON GROWN CRANBERRIES
One Pound Bags **35¢**

LOTS OF FREE PARKING IN OUR HUGE LOT!

These and many more at Competitive Prices for your selection!

Groceteria

THE PLACE TO GO FOR THE BRANDS YOU KNOW

OUR NEW FROZEN FOOD CASES are loaded with lots of wonderful new frozen foods!

We Invite You to Shop So. Oregon's Largest and Finest Frozen Food Display

- Maley's Veal Steaks or Buttered Beef Steaks (pkg. of 4) **REGULAR 79¢**
- Minute Maid Orange Juice, 6-oz. can, Reg. 2/49c 5 cans \$1.00
- Tree Sweet Orange Juice, 12-oz. can, Reg. 45c 3 cans \$1.00
- Idlewild Rock Cornish Game Hens, 1 lb., Reg. 1.19 98c
- Larry's Giant Poor Boy Sandwiches (pkg. of two) 89c
- Larry's Giant Pastrami Sandwiches (pkg. of two) 69c
- Larry's Giant Chili Dogs (pkg. of two) 83c
- Welsh's Shepherd Bread 39c
- Sara Lee Fresh Banana Cake 99c
- South African Lobster Tails \$1.25
- Flav-R-Pac Flav-R-Taters, 2-lb. bag 59c

CRANBERRY SAUCE

OCEAN SPRAY Jellied or Whole **19¢ can**
No. 300 Can Reg. 2 for 49c

Dinners taste better cooked with the famous foods from Groceteria

GROCERIA PRODUCE . . . Fresh Produce you can depend on!

AVOCADOS Fuertes Medium Size—A New Low Price— **2 FOR 25¢**

SnoBoy California DATES Now is the time to make Your Holiday Cookies! ● 2-lb. Pack Unpitted **59¢** Pack Your Choice ● 1 1/2-lb. Pack Pitted

Sorry we ran out of these two items last week. We are repeating so that everyone will have the chance to buy

ARTICHOKES Plump, Tender and Heavy! **10¢ Ea.**

EMPEROR GRAPES For Your Holiday Salad or Fruit Bowl **10¢ lb.**

THANKSGIVING!

Carling home tremendous values!!!

You Just Can't Beat Our Turkey Prices!



We're happy to cash your pay check!

BLUE PLATE — For wonderful oyster dressing
COVE OYSTERS 8-oz. can—reg. 49c **39¢**

PACIFIC **TINY OYSTERS** 8-oz. Can **3 CANS \$1.00**

PACIFIC **Cleaned SHRIMP** No. 1/2 Can **43¢**

DRESSING BREAD
Plain **15-oz. loaf 25¢** Spiced **15-oz. loaf 28¢**

HOLSUM CUBED STUFFING **31¢**
Just Add Liquid
Package sufficient for 5 pound fowl

- Libby Pumpkin No. 2 1/2 Can **5 cans \$1.00**
- Mince Meat s&w — 28-oz. Jar **59c**
- Royal Prince Sweet Potatoes No. 303 Can **25c**
- Diamond A Corn Whole Kernel—No. 303 Can **5 for 95c**
- Diamond A Cut Beans No. 303 Can **5 for \$1.00**
- Nalley's Mince Meat 28-oz. Jar **39c**
- Baker's Chocolate Chips 12-oz. Pkg. **39c**
- Manning's Coffee lb. **59c**
- Kraft Miniature Marshmallows 10 1/2-oz. Pkg. **25c**
- Bordo Pitted Dates One Pound Pkg. **49c**
- Del Monte Fruit Cocktail No. 303 Cans **4 for 89c**
- Hunt's Fruit Cocktail No. 303 Cans **5 for \$1.00**
- Heinz Sweet Pickles 25-oz. Jar **49c**

A Holiday Treat . . .
MEDFORD SPICED Pears No. 303 cans **5 cans \$1.00**
HUNT'S SPICED Peaches No. 2 1/2 cans **4 cans \$1.00**

Johnston **FROZEN PIES** 5-pc. Lady Fair Hostess Set \$4.95 VALUE
MINCE or PUMPKIN—Reg. 59c ea. **39¢** ONLY \$1.50 with 10¢ International Silver with 10¢ Fall '60 W. Co. Gift Set Item.

LUCKY WHIP TOPPING—9 1/2-oz. can **49¢**

Kaiser Aluminum Foil 18-inch wide roll **69¢**

WYANDOTTE OLIVES Free Sampling Friday & Saturday!
LARGE RIPE OLIVES, Reg. 29c **5 for \$1.00**
SELECT PITTED OLIVES, Reg. 29c
LARGE RIPE PITTED OLIVES, Reg. 35c **29c**
CHOPPED OLIVES, 4 1/2-oz. can **2 for 27c**
SLICED OLIVES, 2 1/4-oz. can **2 for 33c**

Groceteria Is Again Featuring **SORAN'S FINEST FRESH DRESSED and frosted TURKEYS**
All Locally Grown!
THE PRICE?????????
GUARANTEED LOWEST PRICES!
Plus Thrifty Green Stamps!

STANDING RIB ROAST U.S.D.A. CHOICE!
Chine Bone Removed
BIG SAVINGS—Plus THRIFTY GREEN STAMPS **79¢ lb.**

Groceteria's Lean, Flavorful **GROUND BEEF** **39¢ lb.** 10-lb. pkg. **\$3.75**

Boneless, Tasty, Delicious **TOP SIRLOIN** U.S.D.A. Choice **\$1.19 lb.**

Medium and Medium Sharp **TILLAMOOK CHEESE** **59¢ lb.**
FREE Samples Friday and Saturday

OYSTERS Small Pacific **69¢ Pint**

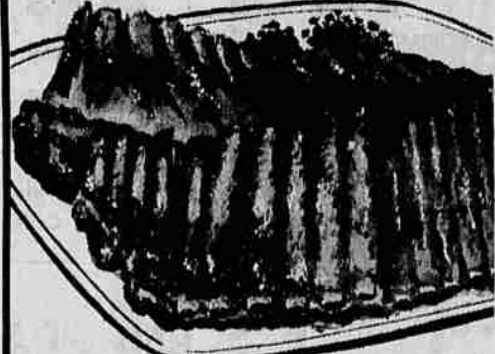
CRABS FRESH OCEAN First of the season! **39¢ lb.**



Big Things Have Happened In Our MEAT DEPT.

See our all new display cases . . . the finest and most modern to be had! We hope you'll like it SELF SERVICE WITH MORE SERVICE THAN EVER!

- New, Convenient Self Service Displays!
- A butcher always eager to serve you!



Young . . . Eastern Pork

SPARERIBS **49¢ lb.** Plus Thrifty Green Stamps 1 1/2 to 3 lb. Avg.

Energy Sources Of Space Being Studied Closely

San Antonio (Science Service)—How the vast energy sources of space affect earth-bound man and man in space are being reported to more than 300 U.S. and foreign scientists at a symposium here.

The reports range from technical descriptions of energies and meteoric material in the solar system to radiation in space. They are being made to a three-day meeting on the medical and biological aspects of the energies of space, held at the School of Aviation Medicine at Brooks Air Force base.

Both civilian and military scientists stressed the importance of understanding these powerful sources of radiation in the universe if man is to advance in space exploration or survive on earth without genetic damage.

Weight Saver

In an interview, an Air Force medical researcher said, "We are trying to decrease the logistics problems of space flight by our exploration of space energies. If a space operation could use the energies and materials at hand, it would be a tremendous weight-saver and make possible many types of space travel not available today."

The ability to harness the tremendous energies of space while protecting man against their deleterious effects may result from current space research, Col. Paul A. Campbell, USAF, assistant to the commander, USAF Aerospace Medical Center, said.

The practical application of these energy sources when harnessed, will make possible easier and cheaper ways to cook as well as grow foods, to build houses on earth as well as space, and to travel in the solar system. But the success of these future practical applications depends primarily upon the achievement of "protection against these energies that, while useful, might be harmful," Campbell said.

Mal. Gen. O. K. Niess, Surgeon General of the Air Force, told Science Service, "The emphasis on energy sources is evidence of a coming nuclear age of the military and non-military. The Air Force Medical Service hopes, by this symposium and others in the future, to contribute to the understanding of these energies so that both the men who fly for their country's defense and the civilian population may benefit from and be better protected from radiation."

Los Angeles (Science Service)—A "daily flood" of misinformation in advertising has lately led the public to believe that teeth are lost primarily because of tooth decay, a Navy dentist has charged. This is not true, he said—more teeth are lost to gum disease than to all other causes.

Dr. Samuel Goldhaber, a captain in the U.S. Navy Dental Corps, told the American Dental Association meeting here today that, despite the efforts of individual dentists and the ADA to inform the public of periodontal (gum) disease, "the voice of the dentist has been all but drowned out."

Fantastic Claims

The "fantastic claims" and the "constant babbling" of advertising has not only focused attention entirely and exclusively on tooth decay, but has also encouraged the neglect and inadequate hygiene that invite periodontal disease.

"The shocking fact is that most people do not keep their mouths really clean enough to keep them healthy," Goldhaber said.

Periodontal disease starts when the gums become inflamed. The gum swells away from the tooth and small open pockets are formed between tooth and gum. Bacteria collect in these pockets and the toxins they produce eat away the fine filaments that connect the tooth to the gum bone. The pocket deepens, sometimes extending as deep as a fifth of an inch, the foundation of the tooth weakens, and eventually the tooth is lost.

POPULATION TRENDS

New York—Europe has an average of 207 persons per acre, compared with Asia's 23, North America's 23, and the U.S. and Canada's 16. Oceania's 5, according to United Nations figures.

