

# Rapp

(Continued from page 1) business, which gives him a good background for the office of county treasurer. For the past five years Chet has been serving the public, which gives him experience in working with the people with whom he should come into contact.

**Progressive Growth**  
Chet feels that the rapid and progressive growth of Jackson county requires a young, alert and aggressive man, able to cope with the problems and questions that arise; and that a fresh approach is needed in the county fiscal matters. He believes that by utilizing new ideas and working with treasurers of other counties, the office can be run more efficiently and economically with better service to the public.

Having worked with the public Chet realizes the importance of cooperation and courteous service. He would definitely work in close cooperation with the other county offices and tax receiving units of Jackson county. The same courteous service would be given everyone whenever they needed his services in working out problems and helping to prepare budgets.

Chet certainly does believe that the office of county treasurer is definitely a full-time position. He would devote to the office his full time and attention. Chet would spend time in the office so that he would be available to whoever might need his services. He feels that to run the office efficiently and economically requires full time. Chet believes the salary justifies the treasurer to devote his full time and attention to the office.

**Wise Investment**  
Chet is much in favor of a wise investment of county funds, which will net the most for the taxpayer. He believes that by properly utilizing the returns of the investments there can be a slight reduction in taxes.

As county treasurer Chet would do everything in his power to prevent our O and C funds from being distributed to other counties in the state. You might ask, "What can the County Treasurer do?" He can exert his influence as a member of the State Treasurers' association.

There is much more to the office than merely keeping the books. Chet believes that he must be available to all the districts at any time as well as attending meetings for the welfare of our county.

Chet's attention definitely would be focused in the direction of efficiency and economy in the handling of county funds.

**In Behalf of**  
Chester L. Rapp  
Candidate for  
County Treasurer

**Portland Livestock**  
Portland — (UPI) — USDA — Cattle 2000. Mostly low choice steers 24-25; good around 900 lb. 23-25; utility standard Holsteins 18-20; good around 850 lb. heifers 21-23; standard-good 20-20; cutter-utility 14-17.50; young utility cows 11; canner-utility 10-12; cutter bulls 14-17.  
Calves 200. Good-choice vealers 24-27; some 27-30; standard 19-23; utility 11-18; good-choice stock calves 21-23.  
Hogs 1000. U. S. 1 and 2 butchers 19-19.25; 2 and 3 lots 18-18.50; 280-330 lb sows 15-16.50; heavier sows 13-14.  
Sheep 3000. Choice with some prime 96-103 lb. woolled lambs 17-25-17.50; choice 80-115 lb. nearly woolled lambs 17; shorn 16-23; good-choice 83-80 lb. feeders 14-15; utility-good ewes 2.50-4.50.

# Janouch

(Continued from page 1) experience has enabled him to improve his services to the public and to conduct the county treasurer's office without an increase in operating expense in spite of the large increase in work. He has increased interest earnings by investments of funds that were not in immediate need for payment of the expenses of the county government and other taxing units.

**Interest Collections**  
As of June 30 this year, interest collections for the 4 1/2 years he has been in office add up to \$330,000.00 — over \$102,000.00 of this amount was allocated to other taxing units than the county government. This is new money and represents a tax savings to the taxpayers.

During his term of office he has been able to furnish considerable financial assistance to taxing units in the preparation of budgets and tax estimates, drawing up of specifications for new bond issues and so on.

Each year the county budget committee requests the county treasurer to make accurate estimates of cash receipts and balances on hand for the coming year which serve as a basis for making out the new budget. These estimates are important for formulating the county government program and enable the county budget committee to determine amount of contributions available for other taxing units for reduction of taxes.

Limited space prevents a complete statement of his accomplishments and services. He is pleased with expressions of complete satisfaction by officials of most taxing units with whom he deals.

**Duties of Treasurer**  
The duties of the county treasurer are not generally known by the public. These are indicated in the state civil service report on its study of Jackson county offices. The report states that the county treasurer must have:

- (1) Thorough knowledge of state laws and county ordinances and regulations governing operations of the county treasurer's office.
- (2) Considerable knowledge of investment and bonding procedures.
- (3) Working knowledge of banking practices and in keeping bank, cash and related fiscal records.
- (4) Working knowledge of modern office practices, procedures and equipment.
- (5) Working knowledge of accounting principles and practices and the basic principles of municipal financial operations.
- (6) And ability to maintain cooperative working relations with other employees and the general public.

These specifications for the county treasurer result from a scientific study of several weeks by an independent agency which is experienced and highly qualified to make such an analysis of Jackson county treasurer position. They should be carefully considered for determining which candidate best fills the bill and if this is done, the voters may decide to vote for Karl Janouch for county treasurer because he is the candidate who has the necessary knowledge and ability to successfully fill the position.

Karl Janouch  
Candidate for  
County Treasurer

# Two Three-Car Crashes Checked By State Police

Minor injuries and extensive damage resulted from two three-car accidents just south of Medford Sunday, state police said today.

The first occurred about 12:05 a.m. in front of the Starlight drive-in theater. A car driven by Robert Louis Mason, 35, of 414 Valley View rd., Medford, was entering the South Pacific highway from the drive-in when it was hit in the rear by a car driven by Aurdnall Madison Rogers, 46, of 315 Charlotte Ann rd., Medford. The impact forced the first car, Mason's car, into the car ahead of it driven by Dale Darwin Sattler, 24, Shady Cove.

Passengers in the Mason car, Ann Lynn Mason, 1 1/2 years, and Carol Ann Mason, 29, were taken to Rogue Valley hospital by a passing motorist, were checked and released, state police said.

**Second Accident**  
The second accident occurred about 6:15 p.m., a mile south of the first one. A car driven by Lloyd Leonard Whiteside, 45, of route 3, box 383C, Medford, had stopped in the inside southbound lane on the South Pacific highway to turn left onto Glenwood rd. A car driven by Stephen Gilbert Crippen, 28, of 111 College st., Ashland, was following another car in the southbound outside lane when the car ahead slowed to turn onto Glenwood rd. The Crippen car swung into the inside lane and hit the Whiteside car in the rear, state police said. Shortly after the accident occurred, a car driven by August John Gomes, 31, of 330 North Holly st., Medford, hit the Crippen car in the rear.

All occupants in the Crippen car were taken to Rogue Valley hospital by private cars and were released later. Genene Louise Phair, 20, of 717 West 14th st., Medford, received a minor bruise on the right knee, but no medical care was needed, state police said. No citations were issued in either accident.

**Nixon Demands Kennedy Correct Brother's Story**

Aboard Nixon Trail — (UPI) — Vice President Richard M. Nixon assailed Sen. John F. Kennedy with mounting anger today on everything from a "lying" brother to personal wealth.

The Republican presidential candidate through his press secretary, brought the issue of religion squarely to the forefront of the campaign by demanding that his Democratic opponent "publicly repudiate his brother Robert F. Kennedy, for 'lies' about alleged Republican distribution of anti-Catholic literature. Kennedy is a Roman Catholic.

The vice president, campaigning stormily across Pennsylvania in a series of railroad whistlestops, taunted Kennedy for his family wealth, saying the Democrat had espoused a platform which would cost the American people \$15 billion annually in additional federal expenditures — "a whale of a lot of money — even . . . to a Kennedy."

And in a continuing fight over the best approach to Fidel Castro's Cuba, the GOP standard-bearer accused Kennedy of switching policy under guise of claiming to have been misquoted.

"This is another case of your speaking first and thinking afterwards," Nixon said in a telegram to Kennedy over their projected fifth TV debate, "a habit which is a very dangerous one for a man who is asking the American people to elect him as commander-in-chief of all the armed forces of this nation."

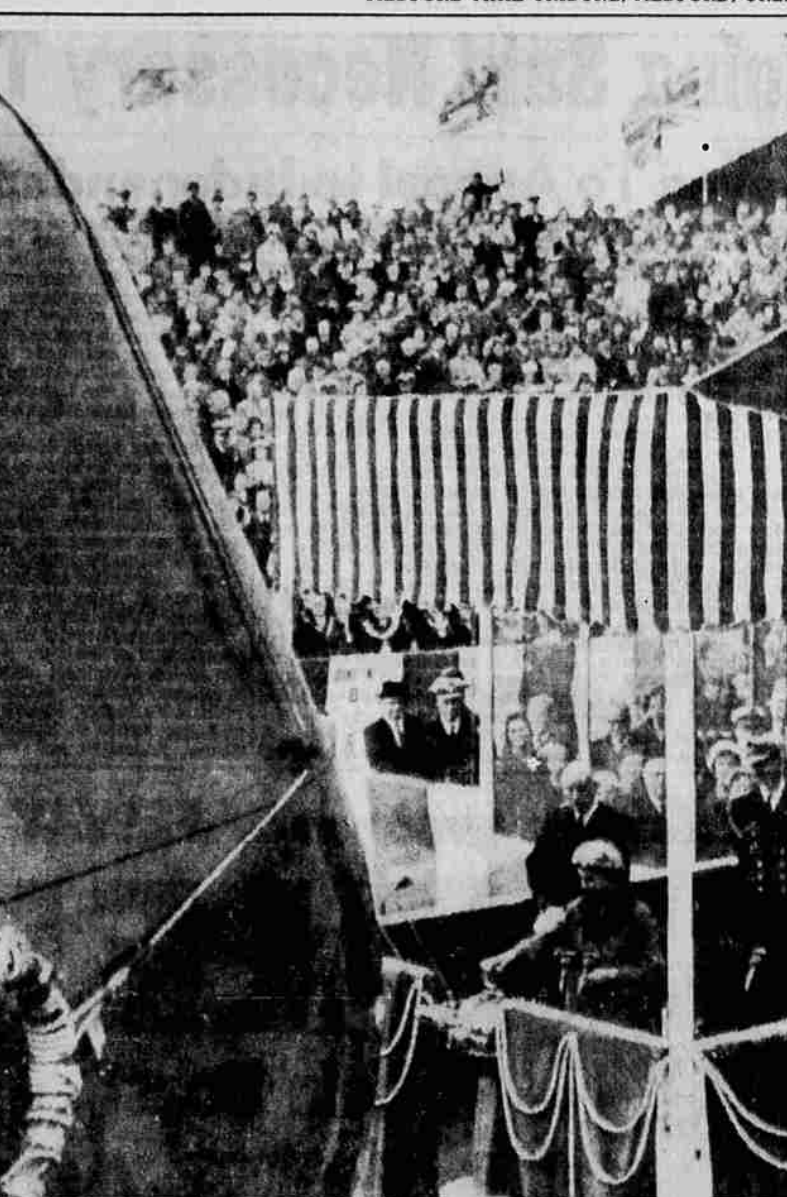
The Democratic candidate's brother Sunday in Washington said Republican organizations in San Diego, Calif., and other points in the country were "issuing anti-Catholic literature and doing it quite openly."

The vice president's press secretary, Herbert G. Klein, denounced the younger Kennedy's statements as untrue.

**Portland Produce**

Portland — (UPI) — Dairy market: Eggs — To retailers: Grade AA extra large, 56-58c; AA large, 53-55c; A large, 51-52c; A medium, 48-50c; AA small, 30-32c; cartons 1-3c additional.  
Butter — To retailers: AA and grade A prints 67-70c lb.; cartons 1c higher; B prints, 66c.  
Cheese, medium cured — To retailers: A grade cheddar, single daisies, 46-51c; processed American cheddar, 5-lb. loaf, 44-46c.

Portland — (UPI) — Dressed chickens — No. 1 grade dressed to retailers: 3 1/2 lb. whole drawn, 34-38c lb.; cut-up 30-42c lb.; hens, heavy-type whole drawn, 39-45c lb.; light-type hen cut-up, 33-35c lb.; whole, 28-30c lb.



SUB LAUNCHED—Queen Elizabeth pulls the lever launching Great Britain's first nuclear submarine, the Dreadnought, at Barrow-in-Furness, England, Friday. Britain thus became the third nation to launch a nuclear submarine only a few hours after Nikita Khrushchev announced the existence of Soviet A-sub.

(UPI Telephoto)

# OBITUARIES

**WILLIS V. PRATT**  
Funeral services for Willis V. Pratt who died Oct. 18, were held in the Conger-Morris funeral home on Saturday. Conducting the services for the Crater Lake Aerie of the Fraternal Order of Eagles were Kenneth E. Brown, worthy president, and Arthur Aos, worthy chaplain. At the time of his death Mr. Pratt was the worthy conductor of the aerie. Assisting were the drill teams from the aerie and auxiliary under the direction of A. W. Klatt and Mrs. Esther Miller.

**CHARLES A. WHILLOCK**  
Funeral services were held Friday, Oct. 21 in Brigham City, Utah, for Charles Alphon Whillock, 70, former Medford resident and businessman.

Mr. Whillock was born in Humansville, Mo., Sept. 4, 1890. He came to Medford in 1915 where he operated four grocery stores in the area.

Mr. Whillock had resided in Utah since 1944. He is survived by his wife, Carrie.

**OLA N. McPHERSON**  
Funeral services for Mrs. Ola N. McPherson, 73, of 217 S. N. Barnoburg rd., who died at her residence Saturday, will be held at the Perle Funeral home Tuesday at 2 p.m. with Dr. D. K. West of the First Presbyterian church officiating. Private committal will be in the Siskiyou Memorial park.

Mrs. McPherson was born Aug. 28, 1887 in Eagle Point, and she is the last survivor of a pioneer family. Mr. and Mrs. Thomas E. Nichols, who came to this country in 1852. Survivors include one son, Fred McPherson, Medford; one nephew, Jack Brophy, Shady Cove; three nieces, Mrs. Gwendlyn Kelly, Central Point; Mrs. Margaret Boiz, Phoenix, and Mrs. Ruth Natwick, Medford.

**ARTHUR C. GRIFFARD**  
Funeral services for Arthur C. Griffard, 2380 Camp Baker rd., Medford, who died Friday, will be held in the Hillcrest Mortuary chapel Tuesday at 11 a.m. Committal will be in the Hillcrest Memorial park. Conger-Morris is in charge of arrangements.

Mr. Griffard was born in Missouri, Feb. 3, 1900. He had made his home in this community for the past nine years.

Survivors include his wife, Mrs. Margaret Griffard, Medford.

# Over-the-Counter Western Stocks

The following bid and asked quotations, from the National Association of Securities Dealers, Inc., do not represent actual transactions. They are a guide to the range within which these securities could have been sold (indicated by the "bid") or bought (indicated by the "asked") at the time of compilation.

Common Stocks	Bid	Asked
Bank of America	48 1/4	49 1/4
Calif. Pacific Utilities	20 1/2	21 1/4
Cascades Plywood	22 1/2	23 1/4
Cons. Freightways	9 1/2	10 1/4
Copco	8 1/2	9 1/4
Cyprus Mines Corp.	22 1/2	23 1/4
First National Bank	53 1/2	54 1/4
Morrison-Knudsen	11 1/2	12 1/4
Northwest Nat. Gas	23 1/2	24 1/4
Pacific Pwr. & Lt.	38 1/2	39 1/4
Pernamantic Cement	16 1/2	17 1/4
Portland Gen. Elec.	31 1/2	32 1/4
U. S. National Bank	62 1/2	63 1/4
United Utilities	42 1/2	43 1/4
West Coast Tel.	26 1/2	27 1/4
Weyerhaeuser	31 1/2	32 1/4

# Investment Funds

Funds	Bid	Asked
Bullcock	11.96	13.11
Chem Fund	10.27	11.10
Colonial Emer	11.83	12.72
Easton Howard Stk	11.24	12.02
Fidelity	14.27	15.43
Group Sec-Avis-Elec	7.72	8.46
Group Sec-Com Stk	11.26	12.06
Group Sec-Petr	9.07	9.84
Group Sec-Steel	7.90	8.66
Keystone B-3	15.45	16.96
Keystone B-4	9.11	9.85
Keystone K-2	12.75	13.81
Keystone S-1	17.89	19.63
Keystone S-2	10.94	11.94
Keystone S-3	11.55	12.80
Keystone S-4	11.29	12.32
Mass Inv Grth Stk	13.53	14.83
TV - Elec	7.26	7.91
Value Line Inc	5.21	5.48
Wellington	13.52	14.74

# Court Records

**MUNICIPAL COURT**  
Zoe Aloha Wells, violation of basic rule, \$10.  
William Walter Slovinsky, disobeyed traffic signal, \$10.  
Robert Edgar Driskell, violation of basic rule, \$25; excessive noise, \$10.  
Leonard Hobert Brook, disobeyed traffic signal, \$10.  
James Earl Fanner, disobeyed traffic signal, \$10.  
Gerald Richard Fanger, excessive noise, \$10.  
Alpha Irene Winter, no operator's license, \$5.  
Kenneth Maynard Wion, disobeyed traffic signal, \$10.  
Wilbur Claude Smith, violation of basic rule, \$25.  
Harold Jackson Kelley, violation of basic rule, \$10.  
Bertha Lee McKinzie, no operator's license, \$5; violation of basic rule, \$25.  
William Carl Wasson, wrong way on one-way street, \$10.  
Henry Harvey Halvorsen, disobeyed traffic signal, \$10.  
Mabel Sauvageau, failure to dim headlights, \$5.  
Arthur Edger Johansen, violation of basic rule, \$25.  
Dora Dee Peyton, no operator's license, \$5.  
Brooke McKay Shadburne, vehicle license expired, \$2.50.  
Henry DeVoss, violation of basic rule, \$15.  
Norma Jean Hardy, violation of basic rule, \$10.  
Janet Laura Volk, disobeyed traffic signal, \$10.  
Kenneth Alvin Carlson, disobeyed traffic signal, \$10.  
William Herbert Gates, violation of basic rule, \$25.  
Edna Ethel Vonstein, improper lane usage, \$10.

# WANTS PAY FIRST

North Luffenham, England — (UPI) — The Rev. John Lyons Shaw said today he will continue wedding ceremonies on a "pay up before I pronounce you man and wife" basis despite discontent among the parishioners.

# Murder Charged In Portland Shooting

Portland — (UPI) — Police held Ross Thompson Jr., 26, on a murder charge today in connection with the fatal shooting in north Portland Saturday night of Percy L. Anderson, about 25.

Anderson was shot with a .22 caliber pistol. Thompson told police in a statement that Anderson had assaulted and threatened him.

# Kennedy Claims Nixon Leading GOP Wreckers

With Kennedy in Illinois — (UPI) — Sen. John F. Kennedy, hitting pocketbook issues, said today the GOP can "count on Vice President Richard Nixon to lead its wrecking crew" on Social Security improvements like medical aid to aged.

Kennedy told an enthusiastic Rockford, Ill., audience that "it is time the vice president came back to Illinois and started to look after his friends because I think Illinois will go Democratic on November 8."

He came here at the start of a two-day stump tour in this key midwest state. He told Rockford Democrats: "I believe Mr. Nixon has led that Republican wrecking crew — not merely been a member of it."

**Seven Point Program**  
The Democratic presidential nominee, although concerned about the religious issue in the midwest, planned to talk about issues affecting individuals economically in the midwest area.

He offered a seven point program to advance welfare for the elderly.

It included his congressionally defeated proposal for placing medical aid under the Social Security payments system; increases in regular Social Security payments to match higher living costs; retraining and other steps to advance job opportunities for older workers; and lower cost housing for the aged.

His plan also would increase retirement benefits for each additional year of work after 65 and boost the \$1,200 a year ceiling on what a worker may earn while drawing Social Security, step up medical research on health problems of the aged and improve rehabilitation and training of physically and mentally handicapped persons.

# Births

**ROESLER** — To Mr. and Mrs. Ralph C., 2602 Walden place, Medford, Oct. 23, 1960, boy, 7 1/2 pounds, at Sacred Heart hospital.

**SCHAUBLE** — To Mr. and Mrs. Richard B., Edgewood Park, Shady Cove, Oct. 24, 1960, boy, 9 pounds, at Sacred Heart hospital.

**HART** — To Mr. and Mrs. Richard E., 135 Clover lane, Medford, Oct. 23, 1960, boy, 8 1/2 pounds, at Sacred Heart hospital.

**KAUFER** — To Mr. and Mrs. Wallace E., route 4, box 350B, Medford, Oct. 23, 1960, girl, 8 pounds, at Sacred Heart hospital.

**BEISECKER** — To Mr. and Mrs. Donald P., 1402 Euclid ave., Medford, Oct. 20, 1960, a girl, 7 1/2 lbs., at Sacred Heart hospital.

**BRATTON** — To Mr. and Mrs. John W., route 1, box 316, Medford, Oct. 21, 1960, a girl, 8 1/2 lbs., at Sacred Heart hospital.

**STOKES** — To Mr. and Mrs. Lewis, route 1, box 503, Gold Hill, Oct. 21, 1960, a boy, 7 1/4 lbs., at Sacred Heart hospital.

**AMIDON** — To Mr. and Mrs. Elgan E., 112 Ajax ave., White City, Oct. 21, 1960, a boy, 5 1/4 lbs., at Sacred Heart hospital.

**CAMPBELL** — To Mr. and Mrs. Charles G., 221 Portland ave., Medford, Oct. 21, 1960, a boy, 6 1/4 lbs., at Sacred Heart hospital.

**LANGOFF** — To Mr. and Mrs. Robert L., 917 Alta st., Medford, Oct. 20, 1960, a boy, 8 1/4 lbs., at Sacred Heart hospital.



**INTERFERENCE** — The Roman Catholic bishops of Puerto Rico Friday prohibited Catholics from voting for the Popular Democratic Party of Gov. Luis Munoz Marin, shown above. A spokesman for Sen. John F. Kennedy in New York said the Democratic candidate regards as "wholly improper" any church interference in the voting of its members. — (UPI Telephoto).

## CHARCOAL STEAKS TILL MIDNIGHT CANDLE ROOM HOTEL Medford

Ham, Bacon or Sausage & Eggs..... 85c  
Special Tenderloin Steak..... \$1.25  
OPEN 24 HOURS  
Alyce Fitzsimmons, Manager

## Columbia "TRU-FIT"

NEEDED:  
**BETTER PAY**  
for teachers who will guide brilliant minds  
An appalling number of our college teachers are leaving because of the inadequate pay. More than ever, we need able intelligent guidance for young minds if they, and we as a nation, are to benefit from their potential. Make your stake in the future; help the college of your choice keep its qualified teachers. Our country cannot stay strong without them.

Learn more about our current college crisis. Write for your free booklet, "OPEN WIDE THE COLLEGE DOOR," Box 36, Times Square Station, New York 36, N.Y.

Published in a public service in cooperation with the Advertising Council and the Newspaper Advertising Executives Association.

## CRATERIAN Spring 2-6-62

## THE MAGNIFICENT SEVEN ARE COMING! THURSDAY

CRATERIAN Spring 2-6-62

## CRATERIAN Spring 2-6-62

TONIGHT! ONLY ONE SHOW

DOORS OPEN	7:30
SHOW STARTS	8:00
Golden Fish	8:20
Feature	8:40
Out At	10:40

CLARK SOPHIA GABLE LOREN VITTORIO DESICA  
IT STARTED IN NAPLES  
Plus: "The Golden Fish"

## LITUA Theatre

SHOW STARTS 7 P.M.

JUNE ALLYSON  
The Opposite Sex  
Appointment in Honduras

## NARSITY Theatre

TONIGHT SHOW STARTS 7:00

ICE PALACE  
ROBERT RYAN CAROLYN JONES RICHARD BURTON  
TOPS IN ENTERTAINMENT

## ACADEMY AWARD WINNER

WALT DISNEY'S GRAND CANYON

## Gay 90's Pizza Parlor

1132 N. Riverside - Next to OK Market

### 12 Varieties of Oven Fresh PIZZA RIE

The tastiest treat you've ever had  
... Pizza made with three of the finest cheeses and special pasta... cooked at 700° in a firebrick oven.

Pizza To Go... Call SP 3-9169

Open 4:30 p.m. to 1 a.m. Mon. thru Fri.  
12 Noon to 1 a.m. Saturday and Sunday

## 6% INTEREST PAID SEMI-ANNUALLY

Withdraw principal and all accrued interest whenever you choose. Any multiple of \$10.00 accepted.

Name of Board of Directors on Request

## CRATER FINANCE

135 PINE CENTRAL NO 4-1273 POINT