

# Forest Products Important to Economy

## Industry Payroll Is \$24.4 Million In County in '59

National Forest Products Week is being observed in the country this week, and the importance forest products play in the economy of southern Oregon is the theme of the local observance.

The average number of employees working in the lumber industry in Jackson county last year was 4,288, according to figures furnished by John J. Patton, manager of the Medford office of the state employment service.

Patton said figures from his office are based on the employment and payrolls covered under the unemployment compensation law.

Employment in the lumber industry in the county last year ranged from a low of 3,651 employees to a high of 4,840, he said. They were employed in an average of 170 firms.

### Main Spring of Economy

Ivan Harrington, Ross Lumber company, White City, and chairman of the Rogue Valley Hoo-Hoo club's planning committee in charge of local Forest Products Week observances, said "timber is the mainspring of the Rogue Valley economy."

This is substantiated by the fact that about one-third of the payroll in the county goes to employees in the lumber industry. Patton said the total payroll in the industry last year was \$24,492,767, compared to a total payroll of \$67,723,985. These, he noted, are payrolls covered under the unemployment compensation law.

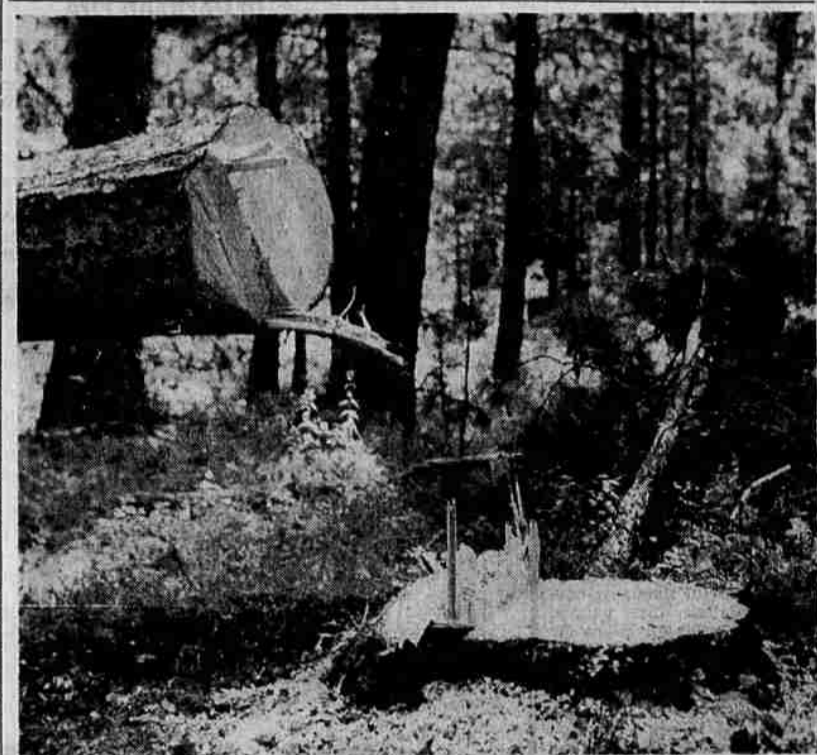
Lumber industry representatives say that for every dollar of stumpage that private-owned forest lands produce, the community receives \$17.60 more from values added to the original worth of the wood by the time it reaches the ultimate consumer. In Jackson county, the forests generate an estimated \$75 to \$80 million toward the economy, they noted.

### Grows Rapidly

During the past few years, the lumber industry in this area has grown rapidly. In 1940, for example, there were an average of 1,106 persons employed in the lumber industry. In 1950, there were

## MEDFORD TRIBUNE

SECTION B MEDFORD, OREGON, TUESDAY, OCTOBER 18, 1960 PAGES 1 to 10



**CUT CLOSE** — Stumps cut low to the ground are standard practice in modern logging techniques of forest industries in their drive to make use of as much of every tree harvested as possible. Oregon's 434 billion board feet of standing saw timber

is enough to lay a floor over the entire state of Massachusetts with planks two inches thick, and tree farming aim to keep this reserve supply constant. (American Forest Products Industries photo)

4,034 employed, and in 1955 there were 4,218. The number of employees, Patton said, is reaching a leveling off stage.

Some exceptions to this leveling off are apparent, he added. Medford Corporation is constructing a new plywood plant which is expected to employ from 150 to 180 when in full operation sometime next year. The addition to the plant will add another \$1,500,000 or so to the payroll in the county.

Lumber, during the past 20 years has become Jackson county's largest manufacturing operation. In 1940, lumber comprised 66.7 per cent of the total manufacturing in the county, and in 1950 this had increased to 64.6 per cent of all manufac-

turing. By 1955, the extensive growth in the lumber manufacturing field had leveled off, and comprised 83.6 per cent of all manufacturing in the county.

Jackson county produces about 600,000,000 board feet of lumber annually, and regeneration of annual growth may push this figure higher since lumber is a renewable resource.

There are in the county 1.5 million acres of forest lands, but of this, 60 per cent is owned by the state or federal governments. The balance is owned and managed by private owners.

### O and C Revenue

The O and C lands, administered by the bureau of land management, produces some

\$2 1/4 million for the county annually from sales of timber. This is paid to the county in lieu of taxes, and is enough to operate the county without levying property taxes.

Of the total number of acres of forest land in the county, 260,000 acres of private forest lands are in the Tree Farming program.

In addition to lumber, plywood and veneer products, there are manufactured in the county lathes, boxes, window and door frames, bark mulch, by-product fuel, compressed sawdust fuel, refrigerator cases, office desks and cabinetry, millwork, fencing, toothpicks, pencil stock, arrow shafts, pre-fabricated cabins, dowels, spindles, toy stock, shoe heels, and many other small items.

## Local Lumbermen Plan Area Special Events This Week

Did you know that the photographic film in your camera originally came from a tree, or that the rayon clothing you wear once grew tall and straight as a hemlock tree in a west coast forest?

These facts and many others will be told by local lumbermen this week when National Forest Products Week is celebrated in southern Oregon, according to Ivan Harrington, chairman of the planning committee.

The event is being coordinated by the Rogue Valley Hoo-Hoo club and special events are being planned for Ashland, Grants Pass and Medford.

### Schedule Programs

Local lumbermen will appear on Service club programs, over radio and television. The lumbermen will stress the fact that lumber is the mainspring of the Rogue valley economy and explain how the raw product from the forest and the finished product of the mill or factory constitute 56 per cent of all manufacturing employment in the state and an even greater percentage locally.

"National Forest Products Week should be most educational to residents of southern Oregon since most of us take trees for granted," Harrington said. "We vaguely

Local retailers get a total lumber, plywood, pulp, paper and many other products, but don't realize that the forests protect our domestic water supply, serve as the habitat for wild game and supply countless residents and tourists with incomparable recreation areas for picnicking, camping, fishing and hunting."

Lumbermen point out that love of wood is a heritage with most Americans because it has been the material which has been used to build homes, schools, churches and farm buildings for centuries.

### FIRE VICTIM DIES

Appleton, Wis. — Five-year-old Sharon Nitzband died Monday, the sixth victim of a fire that killed her mother and four brothers and sisters Friday.

## Campaign Quotes

By United Press International  
Sen. John F. Kennedy:  
(At Wittenberg University, Springfield, Ohio):

"I am not going to promise a Cabinet post or any other post to any race or ethnic group. That is racism in reverse at its worst."

"The New Frontiers program will be accomplished only with a government that is honest, a government that is efficient, a government that is dedicated solely to the public interest. I pledge that kind of government to the American people."

"History teaches us that no party has a monopoly on honesty. Both parties attract their share of crooks and weaklings... a new administration must screen out those who regard government service as the door to power or wealth, those who cannot distinguish between private gains and public trust, and those who believe that old-fashioned honesty with the public's money is both old and out of fashion."

(At Columbus, Ohio, rally):  
"I cannot see how Nixon could argue with Mr. Khrushchev in a kitchen and not meet his Democratic opponent on television here. A fifth TV debate closer to the election would be helpful to the voters of this country."

Vice President Richard M. Nixon:

(At Buffalo, N.Y., rally):  
"Kennedy's Quemoy-Matsu stand would be an express invitation to the Communists... to blackmail us by threats of force all over the world..."

"How can the American people have confidence in a man who shoots from the hip in matters that gravely affect the security of our country?"

"On the U2 and Quemoy-Matsu issues Kennedy made statements that would have made us a sitting duck for

the Communists to push around."

"In both instances he has a very dangerous immaturity in world affairs. Both mistakes have grave implications. If he had made these mistakes as president, the free world simply couldn't have afforded it."

"Sen. Kennedy has to learn to think before he speaks so rashly on matters which affect the very security of the nation..."

"Kennedy's statement that he has always agreed with President Eisenhower's Quemoy-Matsu policy is an

## RAM WITHOUT HORNS

New York — (UPI) — The supervisors at National Bureau of Standards were perplexed when one of its computers used to translate Russian into English kept recording the phrase "water goat" while translating a Russian engineering paper. After much checking, according to Newsweek magazine, it was discovered the "water goat" was the machine's translation of "hydraulic ram."

astounding statement... what can we and the world make of such glib double-talk? This is too important a matter to be left jumbled and flatly contradictory..."

## American Flier On Trial in Cuba

Havana — (UPI) — A revolutionary court was expected to hand down a verdict today in the trial of an American flier accused of conspiring with the U.S. government to invade Nicaragua from Cuba to whip up anti-Castro feelings in Latin America.

The defendant, Leslie Bradley, of Minneapolis, Minn., was the fourth American to face a Cuban military tribunal since Wednesday. The prosecution demanded a 16-year prison term at the windup of the one-day trial in Havana's La Cabana fortress Saturday night.

Whenever you choose LUMBER in planning your home or business building, you're contributing to Rogue River Valley's and Oregon's greatest industry—and YOU, as a taxpayer and citizen, indirectly benefit. More than \$20 million dollars is paid out in wages alone in the forest industry of Jackson County... Medford Lumber Company is proud to be a part of the lumber industry of this area. We'll be glad to offer YOU the building advice and assistance acquired through many years of experience in serving the people of Medford and the Rogue River Valley.

**MEDFORD LUMBER CO.**  
FOURTH AND 3RD STREET • PHONE SP 3-7531

**PITTSBURGH**

# 77<sup>th</sup> Anniversary

**FALL VALUE FESTIVAL**

**ANNIVERSARY SPECIALS**

**1¢ WALLPAPER SALE**

Buy one roll at regular price—get a second one for **1¢**

**Glass Block BANK**

**49¢** Each

**75 FT. BUNDLE CHEESE CLOTH**

42" wide  
Use for dusting ONLY  
**75¢**

**3 PIECE BOWL SET**

Here's a real buy in today's world  
1 1/2", 2 1/2", 3 1/2"  
**88¢**

**TRANSPARENT PLASTIC COVER**

9" x 12" size  
100 household uses  
**SPECIAL 88¢**

**FREE 3 1/2 oz. TUBE "QUICKIE" HAND CLEANER**

Makes clean-up after painting quick and easy. No obligation.

**GARAGE AND WALK PUSH BROOM**

- Full 14" wide. Finished handle
- Tough, rugged brass bristles
- Limited stock

**REG. \$3.00**  
**\$1.49**

SORRY, ONLY ONE OF EACH TO A CUSTOMER

---

**MONEY SAVING BRUSH SPECIALS**

**3" QUALITY PAINT BRUSH**

You'll save over half on this Anniversary special. This 3" brush is one of the hardest sizes made. No mail or phone orders, please!

REG. 2.50 **ONLY \$1.19**

**2" QUALITY PAINT BRUSH**

A super-special. Save a full 30¢ now while the quantity lasts.

REG. 95¢ **ONLY 49¢**

---

**• FREE One per Customer**  
With Any Purchase of 50¢ or More

## WHISK BROOM

For Clothes or Car

---

**PITTSBURGH PAINTS**  
**PITTSBURGH PLATE GLASS CO.**

1 WEST 6TH STREET  
HEADQUARTERS FOR PAINT, BRUSHES, WALLPAPER AND SUNDRIES

PHONE SP 2-6883

# FOREST LOAM AND YOUR YARD!

Many people still are unaware of the many advantages to be found in Forest Loam. If you have a lawn, shrubs, trees or plants it will pay you to read this ad.

**DIRECTIONS**

New lawns, cover freshly seeded and fertilized lawn bed with about one inch of FOREST LOAM as a mulch and to retain moisture. Or after fertilizing, mix about 5 cubic yards FOREST LOAM in upper two inches of top soil per 1000 sq. ft. to provide ideal seed bed. After alternating raking and rolling to prepare smooth seedbed, scratch the finished surface lightly with a rake, sow the seed and re-roll. Water the seeded area with a fine spray heavily at first, then lightly each day until first mowing.

**MATURE LAWNS:** Top-dress with about 1 cu. yd. FOREST LOAM per 500 sq. ft. to retain moisture and promote better growth.

**BERRIES:** Blueberries, raspberries and blackberries respond to mulching. A 3 to 5-inch FOREST LOAM mulch effectively curtails weed growth. A 2 to 3-inch FOREST LOAM mulch is recommended for strawberries.

**VEGETABLES AND FLOWERS:** Apply 1 to 2 inches of FOREST LOAM as a mulch.

Ground coverage of FOREST LOAM: 1 bag, 2 1/2 cu. ft., covers 30 sq. ft., 1 inch deep.

**DELIVERED PRICES (Local Area)**

100 Cu. Ft. Truck Load	300 Cu. Ft. Truck Load
<b>\$7.00</b>	<b>\$16.00</b>
200 Cu. Ft. Truck Load	Also Available for Pick-Up at TIMBER PRODUCTS FUEL YARD
<b>\$12.00</b>	

**TIMBER PRODUCTS COMPANY**  
MEDFORD OREGON

Sage & McAndrews Road  
**SP 2-8086**